

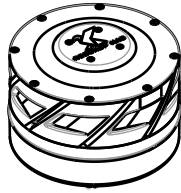
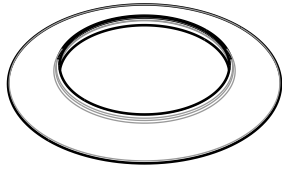


KAS PRE-CLEANER PARTS MANUAL

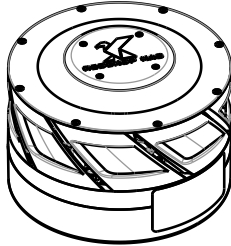
REDEKOP™

PRODUCT NUMBER:	KAS-003	PRE-CLEANER KAS 3 INCH
	KAS-004	PRE-CLEANER KAS 4 INCH
	KAS-005	PRE-CLEANER KAS 5 INCH
	KAS-006	PRE-CLEANER KAS 6 INCH
	KAS-008	PRE-CLEANER KAS 8 INCH

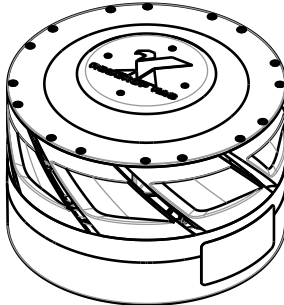
KA009-10 R1



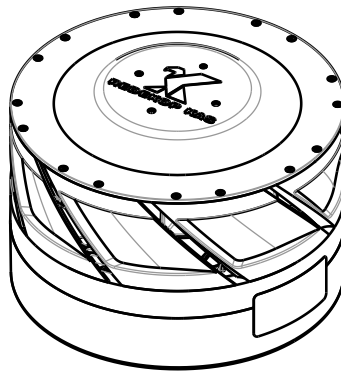
**KAS-003
PRE-CLEANER KAS 3 INCH**



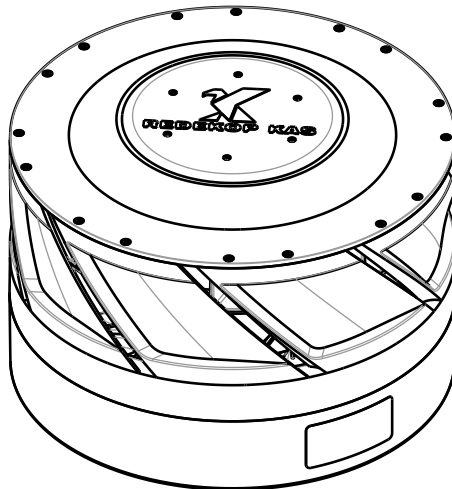
**KAS-004
PRE-CLEANER KAS 4 INCH**



**KAS-005
PRE-CLEANER KAS 5 INCH**



**KAS-006
PRE-CLEANER KAS 6 INCH**



**KAS-008
PRE-CLEANER KAS 8 INCH**

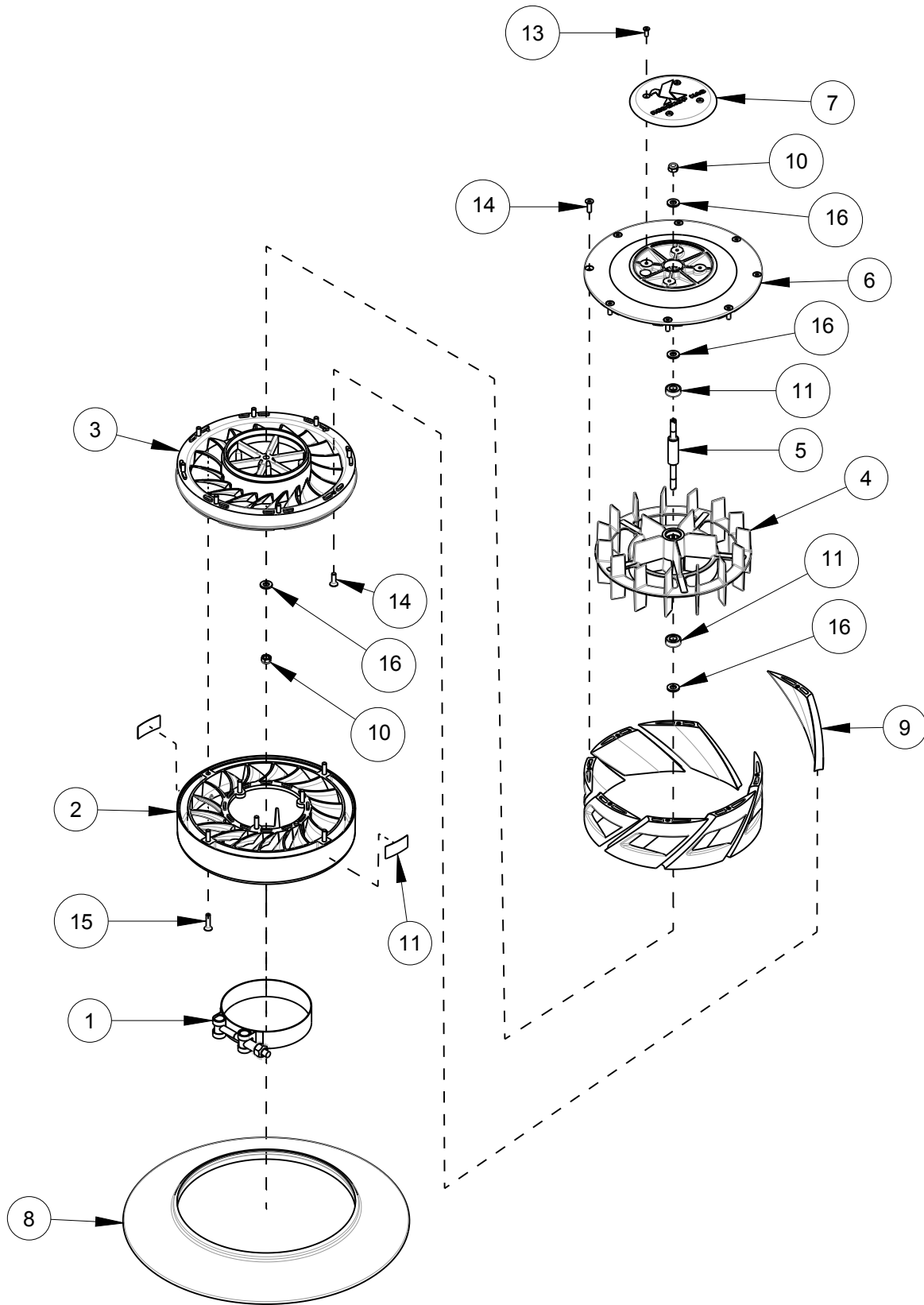
KAS Pre-cleaners

Table of Contents

Part Number	Description	<u>Section</u>
KAS-003	KAS Pre-Cleaner 3"	1
KAS-004	KAS Pre-Cleaner 4"	2
KAS-005	KAS Pre-Cleaner 5"	3
KAS-006	KAS Pre-Cleaner 6"	4
KAS-008	KAS Pre-Cleaner 8"	5

1 Pre-cleaner KAS 3"

Date: 29JAN2026



EGN000249P R3

Indicate implement serial number with any parts order

1 Pre-cleaner KAS 3"

Date: 29JAN2026

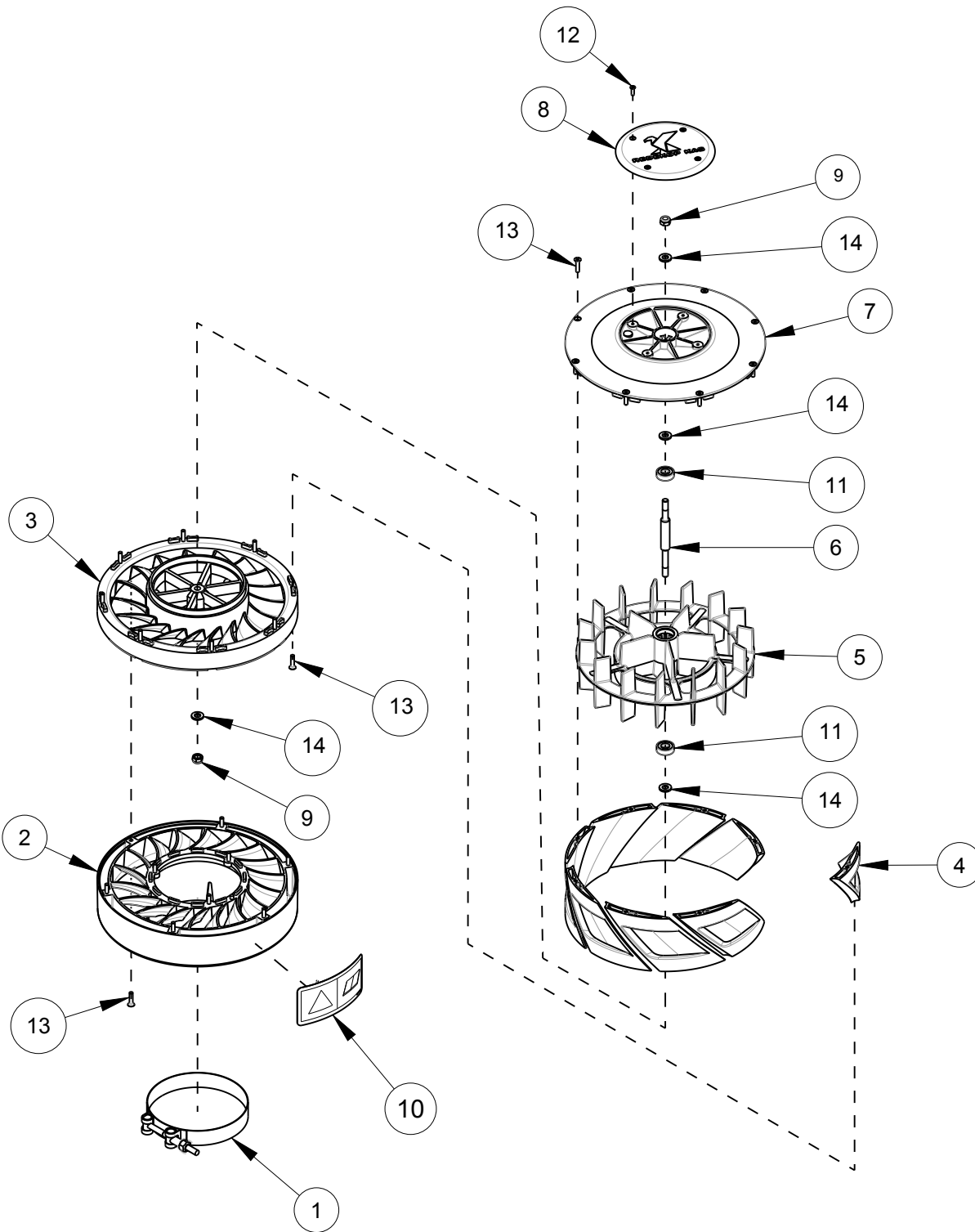
ITEM NO.	PART NO.	DESCRIPTION	QTY	NOTE
1	RP1677	CLAMP T-BOLT BAND M6 X 1.0 X 3.25 ID	1	
2	KA301-01	INLET BOTTOM 3IN	1	
3	KA302-01	INLET TOP - 3IN	1	
4	KA304-01	ROTOR 3IN	1	
5	KA304-02	CENTRE SHAFT - KA300 ASSEMBLY	1	
6	KA306-01	EJECTOR TOP - 3IN	1	
7	KA307-01	CAP - 3IN	1	
8	KA308-01	DRIP RING KAS 3in	1	
9	KA309-01	FIN EJECTOR 3IN	8	
10	N51M-05	NUT NYLOCK STL M5x0.8 C8 YZD DIN 985	2	
11	RP1668	BEARING 5ID 14OD 5W	2	
12	RP1678	DECAL SAFETY CHECK SERVICE - 14x28	2	
13	S22M-0308	SCREW FLAT HEAD T8 M3 x 8L SS FOR PLASTIC	4	
14	S22M-03512	SCREW FLAT HEAD T15 M3.5 x 12L SS FOR PLASTIC	16	
15	S22M-03516	SCREW FLAT HEAD T15 M3.5 x 16L SS FOR PLASTIC	7	
16	W11M-05	WASHER FLAT M5 x 11 x 1.4 YZD	4	

EGN000249P R3

Indicate implement serial number with any parts order _____

2 Pre-cleaner KAS 4"

Date: 22AUG2025



EGN000250P R2

Indicate implement serial number with any parts order

2 Pre-cleaner KAS 4"

Date: 22AUG2025

ITEM NO.	PART NO.	DESCRIPTION	QTY	NOTE
1	RP1661	CLAMP T-BOLT BAND M6 X 1.0 X 4.25 ID	1	
2	KA401-01	INLET BOTTOM 4IN	1	
3	KA402-01	INLET TOP - 4IN	1	
4	KA403-01	FIN EJECTOR 4IN	8	
5	KA404-01	ROTOR 4IN	1	
6	KA404-02	CENTER SHAFT - KA400 ASSEMBLY	1	
7	KA406-01	EJECTOR TOP 4IN	1	
8	KA407-01	TOP CAP - KAS 4"	1	
9	N51M-06	NUT NYLOCK STL M6x1 C8 YZD DIN985	2	
10	RP1539	DECAL SAFETY CHECK SERVICE - 50x100	1	
11	RP1541	BEARING 6ID 19OD 6W	2	
12	S22M-1010	SCREW FLAT HEAD T10 x 10L SS KN6041	4	
13	S22M-03516	SCREW FLAT HEAD T15 M3.5 x 16L SS FOR PLASTIC	25	
14	W11M-06	WASHER FLAT M6 x 13 x 1.75 YZD	4	

EGN000250P R2

Indicate implement serial number with any parts order _____

3 Pre-cleaner KAS 5"

Date: 22AUG2025

ITEM NO.	PART NO.	DESCRIPTION	QTY	NOTE
1	RP1595	CLAMP T-BOLT BAND M6 X 1.0 X 5.5 ID	1	
2	KA501-01	INLET BOTTOM - 5IN	1	
3	KA502-01	INLET TOP - 5IN	1	
4	KA503-01	EJECTOR FIN - 5IN	8	
5	KA504-01	ROTOR PRECELEANER 5IN	1	
6	KA504-02	CENTRE SHAFT - KA500 ASSEMBLY	1	
7	KA506-01	EJECTOR TOP - 5IN	1	
8	KA507-01	CAP - 5IN	1	
9	N51M-10	NUT NYLOCK STL M10x1.5 C8 YZD DIN985	2	
10	RP1506	BEARING 10ID 26OD 8W	2	
11	RP1539	DECAL SAFETY CHECK SERVICE - 50x100	1	
12	S22M-1010	SCREW FLAT HEAD T10 x 10L SS KN6041	4	
13	S22M-1518	SCREW FLAT HEAD T15 x 18L SS KN6041	46	
14	W11M-10	WASHER FLAT M10 x 20 x 2.3 YZD	4	

EGN000251P R2

Indicate implement serial number with any parts order _____

4 Pre-cleaner KAS 6"

Date: 22AUG2025

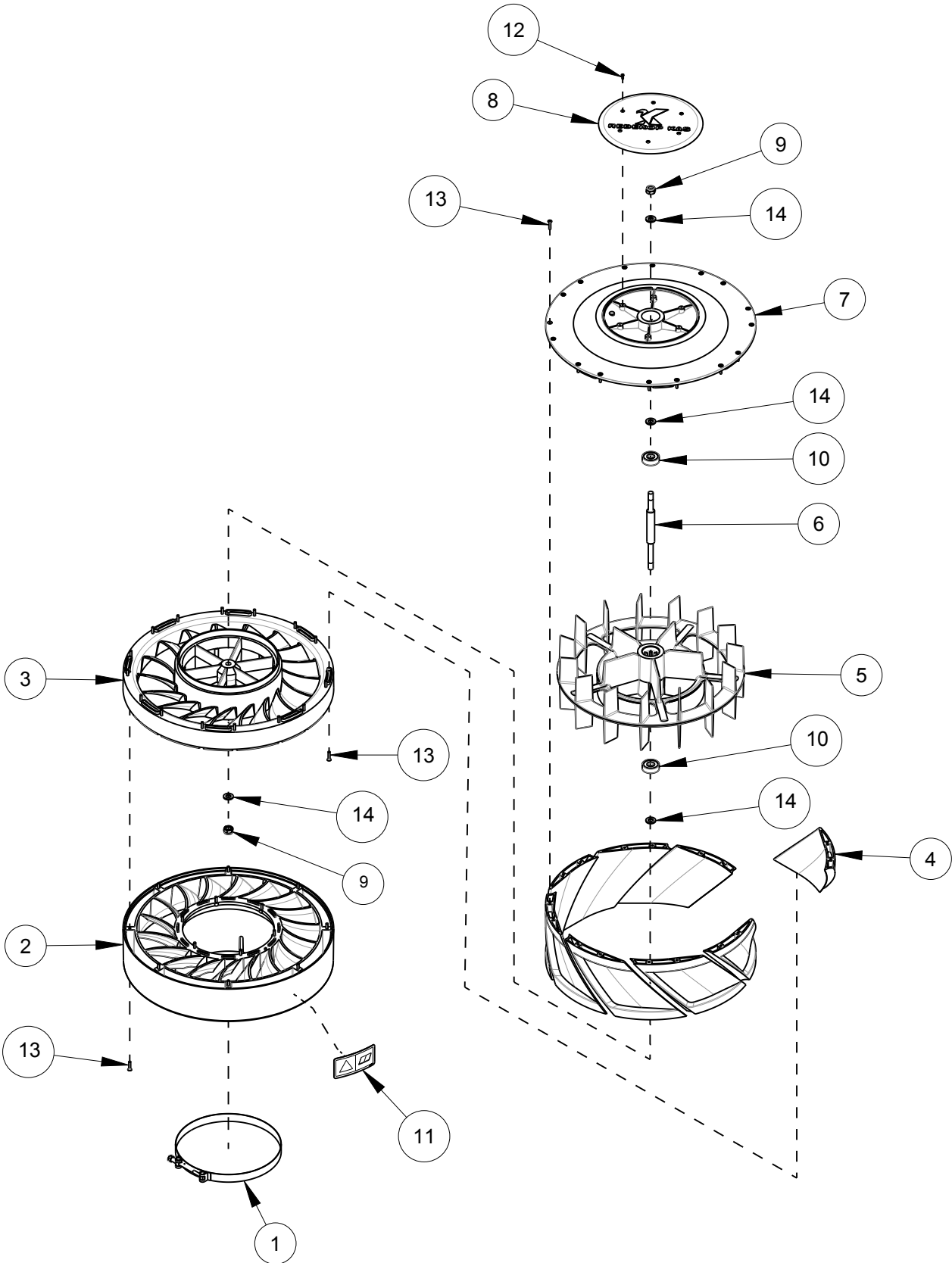
ITEM NO.	PART NO.	DESCRIPTION	QTY	NOTE
1	RP1596	CLAMP T-BOLT BAND M6 X 1.0 X 6.5 ID	1	
2	KA601-01	INLET BOTTOM PRECLEANER 6IN	1	
3	KA602-01	INLET TOP PRECLEANER 6IN	1	
4	KA603-01	EJECTOR FIN 6IN	8	
5	KA604-01	ROTOR PRECLEANER 6IN	1	
6	KA604-02	CENTRE SHAFT - KA600 ASSEMBLY	1	
7	KA606-01	EJECTOR TOP PRECLEANER 6IN	1	
8	KA607-01	CAP PRECLEANER 6IN	1	
9	N51M-10	NUT NYLOCK STL M10x1.5 C8 YZD DIN985	2	
10	RP1506	BEARING 10ID 26OD 8W	2	
11	RP1539	DECAL SAFETY CHECK SERVICE - 50x100	1	
12	S22M-1010	SCREW FLAT HEAD T10 x 10L SS KN6041	4	
13	S22M-1518	SCREW FLAT HEAD T15 x 18L SS KN6041	46	
14	W11M-10	WASHER FLAT M10 x 20 x 2.3 YZD	4	

EGN000252P R2

Indicate implement serial number with any parts order _____

5 Pre-cleaner KAS 8"

Date: 22AUG2025



EGN000253P R2

Indicate implement serial number with any parts order

5 Pre-cleaner KAS 8"

Date: 22AUG2025

ITEM NO.	PART NO.	DESCRIPTION	QTY	NOTE
1	RP1535	CLAMP T-BOLT BAND M6 X 1.0 X 8.5 ID	1	
2	KA801-01	INLET BOTTOM 8IN	1	
3	KA802-01	INLET TOP 8IN	1	
4	KA803-01	FIN EJECTOR - 8IN	8	
5	KA804-01	ROTOR 8IN	1	
6	KA804-02	CENTRE SHAFT - KA800 ASSEMBLY	1	
7	KA806-01	EJECTOR TOP 8IN	1	
8	KA807-01	CAP 8IN	1	
9	N51M-10	NUT NYLOCK STL M10x1.5 C8 YZD DIN985	2	
10	RP1503	BEARING 10ID 35OD 11W	2	
11	RP1539	DECAL SAFETY CHECK SERVICE - 50x100	1	
12	S22M-1010	SCREW FLAT HEAD T10 x 10L SS KN6041	6	
13	S22M-2020	SCREW FLAT HEAD T20 x 20L SS KN6041	46	
14	W11M-10	WASHER FLAT M10 x 20 x 2.3 YZD	4	

EGN000253P R2

Indicate implement serial number with any parts order _____

REDEKOP MANUFACTURING

1.866.REDEKOP (1.866.733.3567)

Saskatoon, Saskatchewan Canada S7K 3J7

info@redkopmfg.com

www.redkopmfg.com

For additional and the most up to date Manuals:



EQR002

REDEKOP™

REDEKOP™