

**REDEKOP™**

# **SEED CONTROL UNIT** **AGCO/FENDT/IDEAL**

## **PARTS MANUAL**

PRODUCT NUMBER: **850-510H**  
SERIAL NUMBER RANGE: **SCFA0001 - PRESENT**  
OPTIONS: **850-503 MAGNET KIT**

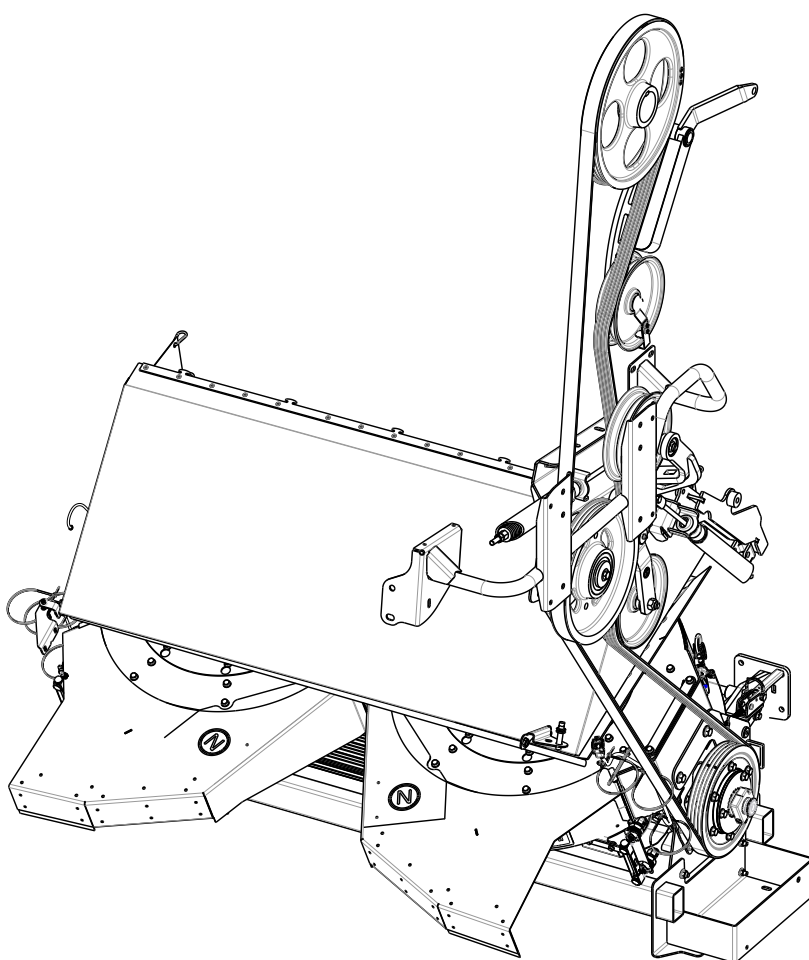
# FENDT IDEAL SEED CONTROL UNIT

## Table of Contents

<b>Section A FENDT IDEAL SCU</b>	<b>Page</b>
SCU Housing (SCFA0001 - SCFA0199).....	1 - 2
SCU Housing (SCFA0200 - PRESENT) .....	3 - 4
SCU Outlets .....	5 - 6
SCU Outlets Extension .....	7 - 8
Inlets and Stators .....	9 - 10
Rotors .....	11 - 12
Driveline Assembly (SCFA0001 - SCFA0199) .....	13 - 14
Driveline Assembly (SCFA0200 - PRESENT) .....	15 - 16
Oil Cooler Assembly .....	17 - 18
Oil Cooler Sight Glass Assembly .....	19 - 20
Harness and Sensors .....	21 - 22
Vbelts and Sheaves .....	23 - 24
Idler Arm SCU Belt Tensioner .....	25 - 26
Jackshaft Upper Idler Arm & Tensioner .....	27 - 28
Jackshaft Lower Idler Arm & Tensioner (SCFA0001 - SCFA0115) .....	29 - 30
Jackshaft Lower Idler Arm & Tensioner (SCFA0116 - PRESENT) .....	31 - 32
Jackshaft SCU Sheave .....	33 - 34
Ladder Mount and SCU Shield .....	35 - 36
SCU Swivel Mounts MY20 .....	37 - 38
SCY Swivel Mounts MY18 & MY19 .....	39 - 40
Windrow Canvas Assembly .....	41 - 42
Service Frame SCU .....	43 - 44

<b>Section B 850-503 MAGNET KIT</b>	<b>Page</b>
Magnet and Bracket .....	1 - 2

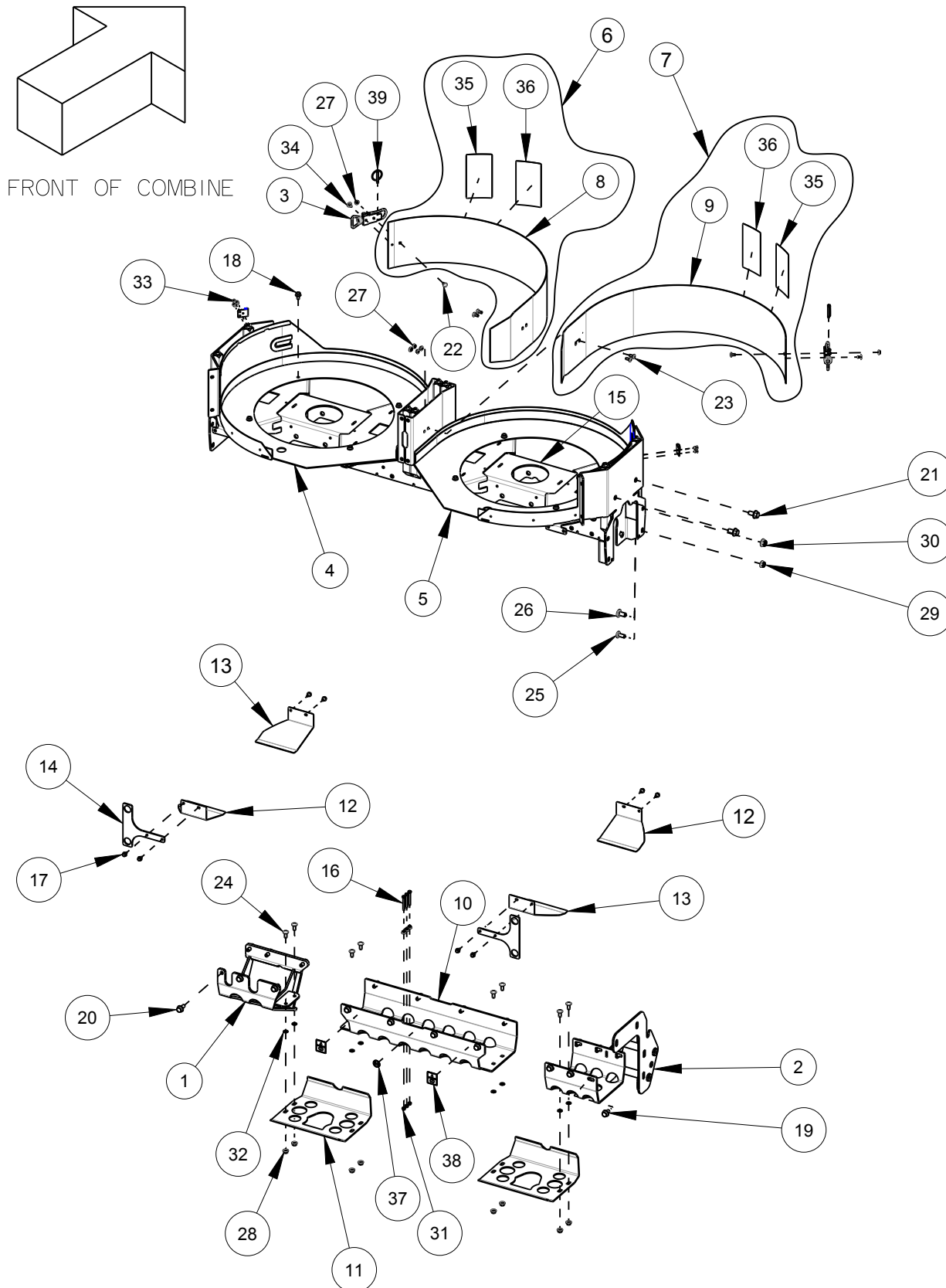
## SECTION A



Date: 27DEC2024

Serial No Range From:  
SCFA0001

Serial No Range To:  
SCFA0199



SC006-08

Indicate implement serial number with any parts order

**REDEKOP**

# SCU Housing

**Date:27DEC2024** **Serial No Range From: SCFA0001** **Serial No Range To: SCFA0199**

ITEM NO.	PART NO.	DESCRIPTION	QTY	NOTE
1	AFI14C	SCU PIVOT MOUNT - CHARCOAL	1	
2	AFI18C	SKID PLATE SCU DRV - CHARCOAL	1	
3	RPI073	LATCH, ADJUSTABLE	2	
4	SCI78CL	HOUSING BTM LT SC - CHARCOAL	1	
5	SCI78CR	HOUSING BTM RT SC - CHARCOAL	1	
6	SCI79CAL	LT COVER MILL INSP W/ DECAL - CHARCOAL	1	
7	SCI79CAR	RT COVER MILL INSP W/ DECAL - CHARCOAL	1	
8	SCI79CL	COVER, MILL INSP LT - CHARCOAL	1	NSS - SCI79CAL
9	SCI79CR	COVER, MILL INSP RT - CHARCOAL	1	NSS - SCI79CAR
10	SC357CA	COVER, TUBE BTM MID W/ DECALS - CHARCOAL	1	S/S - SCI322CA
11	SC366C	SCU GBX SKID PLATE - CHARCOAL	2	
12	SC483CL	GUARD NARROW SCU HARNESS LT - CHARCOAL	2	
13	SC483CR	GUARD NARROW SCU HARNESS RT - CHARCOAL	2	
14	SC832C	SIGHT GLASS MOUNTING BRACKET - CHARCOAL	2	
15	SC885C	BEAM, 885W SCU - CHARCOAL	1	
16	B11M-0650	BOLT HEX M6X50 C8.8 YZD Iso4014	3	
17	B21M-0612	BOLT FLG M6X12 C8.8 YZD Iso8102	8	
18	B21M-0816	BOLT FLG M8X16 C8.8 YZD Iso8102	8	
19	B21M-1020	BOLT FLG M10X20 C8.8 YZD Iso8102	14	
20	B21M-1025	BOLT FLG M10X25 C8.8 YZD Iso8102	6	
21	B21M-1225	BOLT FLG M12X25 C8.8 YZD Iso8102	2	
22	B31M-0612	BOLT RH M6X12 C8.8 YZD ISO8678 Short Neck	2	
23	B31M-0616	BOLT RH M6X16 C8.8 YZD ISO8678 Short Neck	4	
24	B31M-0820	BOLT RH M8x20 C8.8 YZD ISO8678 Short Neck	8	
25	B31M-1025	BOLT RH M10X25 C8.8 YZD ISO8678 Short Neck	1	
26	B31M-1225	BOLT RH M12X25 C8.8 YZD ISO8678 Short Neck	1	
27	N21M-06	NUT FLG M6 C8 YZD Iso4161	9	
28	N21M-08	NUT FLG M8 C8 YZD Iso4161	8	
29	N21M-10	NUT FLG M10 C8 YZD Iso4161	1	
30	N21M-12	NUT FLG M12 C8 YZD Iso4161	1	
31	N41M-06	NUT LOCK STL M6 C8 YZD DIN980V	3	
32	N63M-08	NUT PUSH M8 YZD	8	
33	RO3-07A	RIVET INCH GENERIC	6	
34	RO3-08H	RIVET SS 0.188 x .375L LARGE FLANGE	2	
35	RPI086	DECAL SAFETY KICKBACK HAZARD	2	
36	RPI089	DECAL SAFETY HAND CUT HAZARD	2	
37	RPI092	DECAL GREASE 50 HR	1	
38	RPI093	DECAL OIL SPEC CHECK MANUAL	2	
39	RPI094	PIN LYNCH M6 x 45L w/LANYARD ZN	2	

NSS = NOT SERVICED SEPARATELY S/S = SUPERSEDED BY

SC006-08

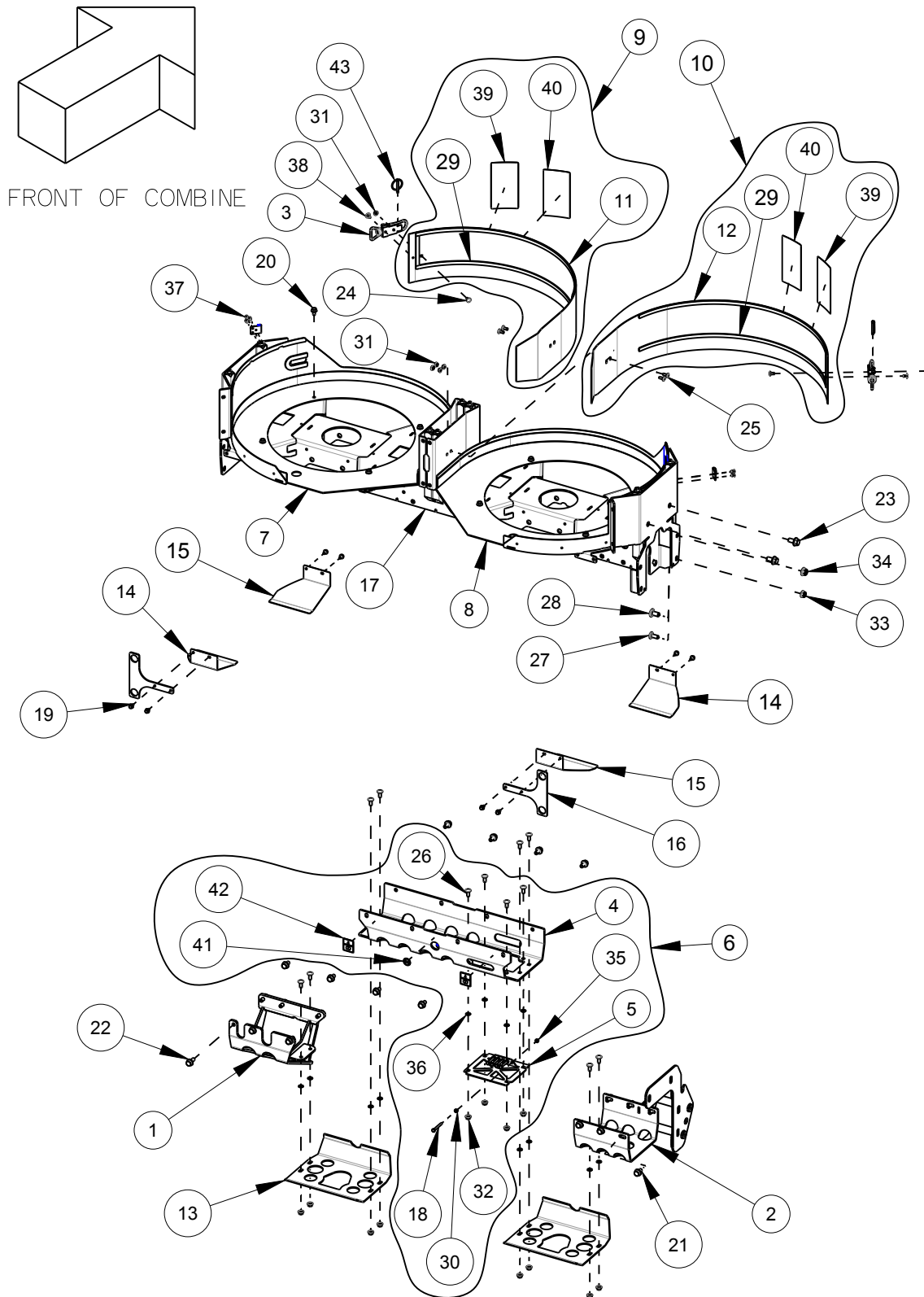
Indicate implement serial number with any parts order

**REDEKOP**

Date: 27DEC2024

Serial No Range From:  
SCFA0200

Serial No Range To:  
PRESENT



SC006-08

Indicate implement serial number with any parts order

# SCU Housing

Date:27DEC2024 Serial No Range From: SCFA0200 Serial No Range To: PRESENT

ITEM NO.	PART NO.	DESCRIPTION	QTY	NOTE
1	AFI14C	SCU PIVOT MOUNT - CHARCOAL	1	
2	AFI18C	SKID PLATE SCU DRV - CHARCOAL	1	
3	RPI073	LATCH, ADJUSTABLE	2	
4	SCI156C	COVER TUBE BTM MID - CHARCOAL	1	
5	SCI157C	SHEAR BOLT ACCESS PLATE - CHARCOAL	1	
6	SCI322CA	COVER BTM MID W/ SHRBLT ACCSS - CHARCOAL	1	
7	SCI78CL	HOUSING BTM LT SC - CHARCOAL	1	
8	SCI78CR	HOUSING BTM RT SC - CHARCOAL	1	
9	SCI79CAL	LT COVER MILL INSP W/ DECAL - CHARCOAL	1	
10	SCI79CAR	RT COVER MILL INSP W/ DECAL - CHARCOAL	1	
11	SCI79CL	COVER, MILL INSP LT - CHARCOAL	1	NSS - SCI79CAL
12	SCI79CR	COVER, MILL INSP RT - CHARCOAL	1	NSS - SCI79CAR
13	SC366C	SCU GBX SKID PLATE - CHARCOAL	2	
14	SC483CL	GUARD NARROW SCU HARNESS LT - CHARCOAL	2	
15	SC483CR	GUARD NARROW SCU HARNESS RT - CHARCOAL	2	
16	SC832C	SIGHT GLASS MOUNTING BRACKET - CHARCOAL	2	
17	SC885C	BEAM, 885W SCU - CHARCOAL	1	
18	BIIM-0650	BOLT HEX M6X50 C8.8 YZD Iso4014	5	
19	B2IM-0612	BOLT FLG M6X12 C8.8 YZD Iso8102	8	
20	B2IM-0816	BOLT FLG M8X16 C8.8 YZD Iso8102	8	
21	B2IM-1020	BOLT FLG M10X20 C8.8 YZD Iso8102	14	
22	B2IM-1025	BOLT FLG M10X25 C8.8 YZD Iso8102	6	
23	B2IM-1225	BOLT FLG M12X25 C8.8 YZD Iso8102	2	
24	B3IM-0612	BOLT RH M6X12 C8.8 YZD ISO8678 Short Neck	2	
25	B3IM-0616	BOLT RH M6X16 C8.8 YZD ISO8678 Short Neck	4	
26	B3IM-0820	BOLT RH M8x20 C8.8 YZD ISO8678 Short Neck	12	
27	B3IM-1025	BOLT RH M10X25 C8.8 YZD ISO8678 Short Neck	1	
28	B3IM-1225	BOLT RH M12X25 C8.8 YZD ISO8678 Short Neck	1	
29	CG776-01	VINYL FOAM TAPE - 1/8 x 1/2 x 300	1	
30	NIIM-06	NUT HEX M6 C8 YZD ISO4032	5	
31	N2IM-06	NUT FLG M6 C8 YZD Iso4161	6	
32	N2IM-08	NUT FLG M8 C8 YZD Iso4161	12	
33	N2IM-10	NUT FLG M10 C8 YZD Iso4161	1	
34	N2IM-12	NUT FLG M12 C8 YZD Iso4161	1	
35	N42M-06	NUT LOCK STL M6 C10 YZD DIN980V	5	
36	N63M-08	NUT PUSH M8 YZD	12	
37	RO3-07A	RIVET INCH GENERIC	6	
38	RO3-08H	RIVET SS 0.188 x .375L LARGE FLANGE	2	
39	RPI086	DECAL SAFETY KICKBACK HAZARD	2	
40	RPI089	DECAL SAFETY HAND CUT HAZARD	2	
41	RPI092	DECAL GREASE 50 HR	1	
42	RPI093	DECAL OIL SPEC CHECK MANUAL	2	
43	RPI094	PIN LYNCH M6 x 45L w/LANYARD ZN	2	

NSS = NOT SERVICED SEPARATELY

SC006-08

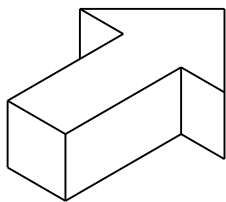
Indicate implement serial number with any parts order

**REDEKOP**

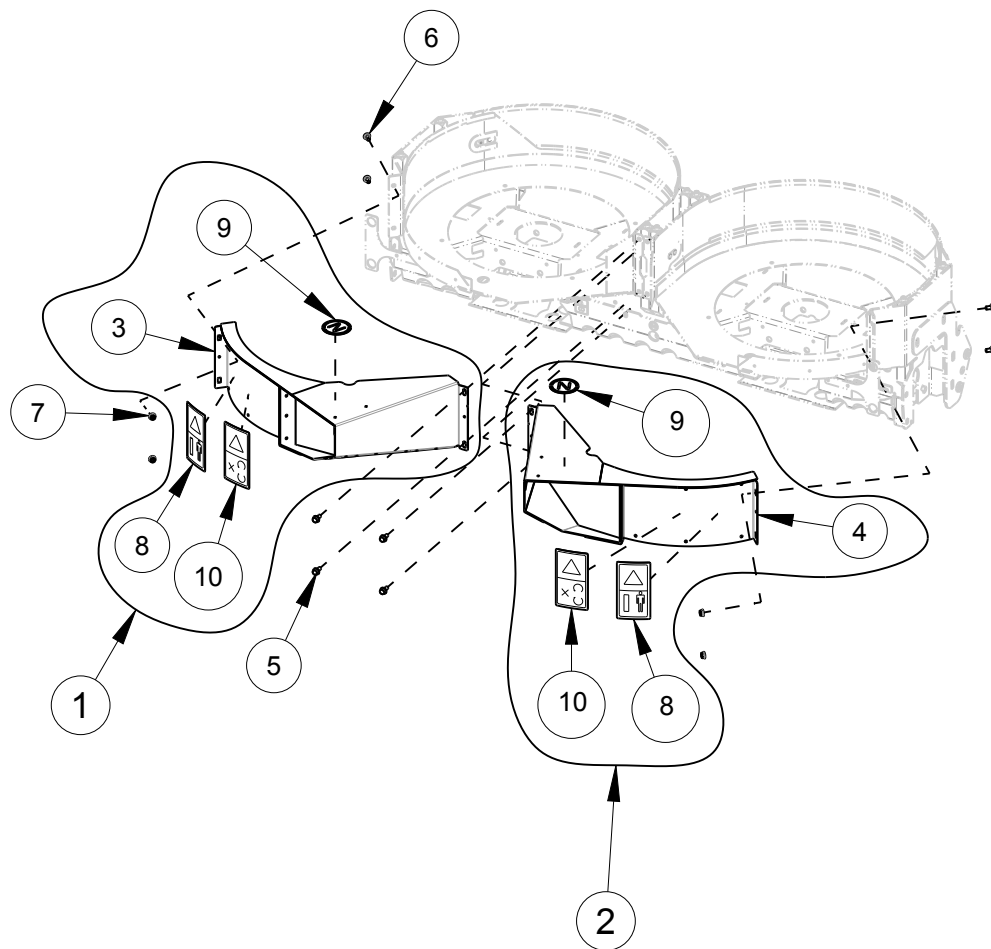
Date:27DEC2024

Serial No Range From:  
SCFA0001

Serial No Range To:  
PRESENT



FRONT OF COMBINE



SC006-08

Indicate implement serial number with any parts order

# Outlets

Date:27DEC2024		Serial No Range From: SCFA0001	Serial No Range To: PRESENT	
ITEM NO.	PART NO.	DESCRIPTION	QTY	NOTE
1	SC180CAL	OUTLET LT SCU w/ DECALS - CHARCOAL	1	
2	SC180CAR	OUTLET RT SCU w/ DECALS - CHARCOAL	1	
3	SC180CL	OUTLET LT SCU MY2I - GREEN	1	NSS - SC180CAL
4	SC180CR	OUTLET RT SCU MY2I - GREEN	1	NSS - SC180CAR
5	B2IM-0820	BOLT FLG M8X20 C8.8 YZD Iso8102	4	
6	B3IM-0816	BOLT RH M8x16 C8.8 YZD ISO8678 Short Neck	4	
7	N2IM-08	NUT FLG M8 C8 YZD Iso4161	4	
8	RP872	DECAL SAFETY PROJECTILE HAZARD	2	
9	RP963	DECAL "N"	2	
10	RPI089	DECAL SAFETY HAND CUT HAZARD	4	

NSS = NOT SERVICED SEPARATELY

SC006-08

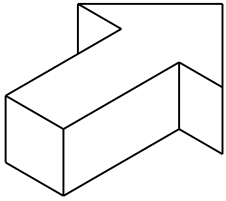
Indicate implement serial number with any parts order



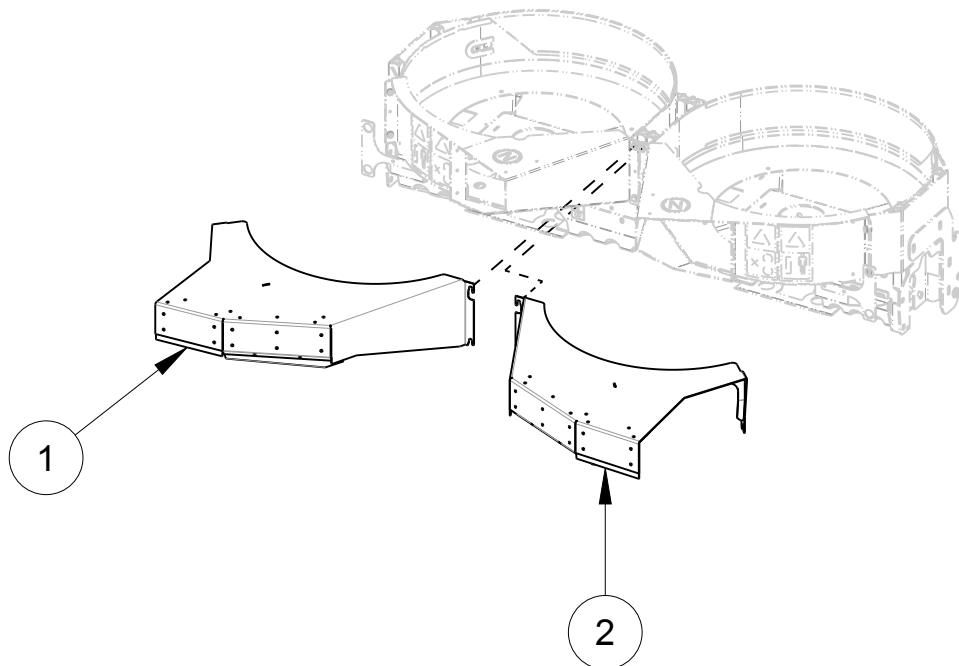
Date:27DEC2024

Serial No Range From:  
SCFA0001

Serial No Range To:  
PRESENT



FRONT OF COMBINE



SC006-08

Indicate implement serial number with any parts order

# SCU Outlets Extension

**Date:**27DEC2024      **Serial No Range From:** SCFA0001      **Serial No Range To:** PRESENT

ITEM NO.	PART NO.	DESCRIPTION	QTY	NOTE
1	AF228CL	SCU OUTLET EXTENSION LT - CHARCOAL	1	
2	AF228CR	SCU OUTLET EXTENSION RT - CHARCOAL	1	

SC006-08

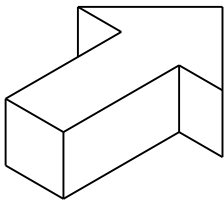
Indicate implement serial number with any parts order



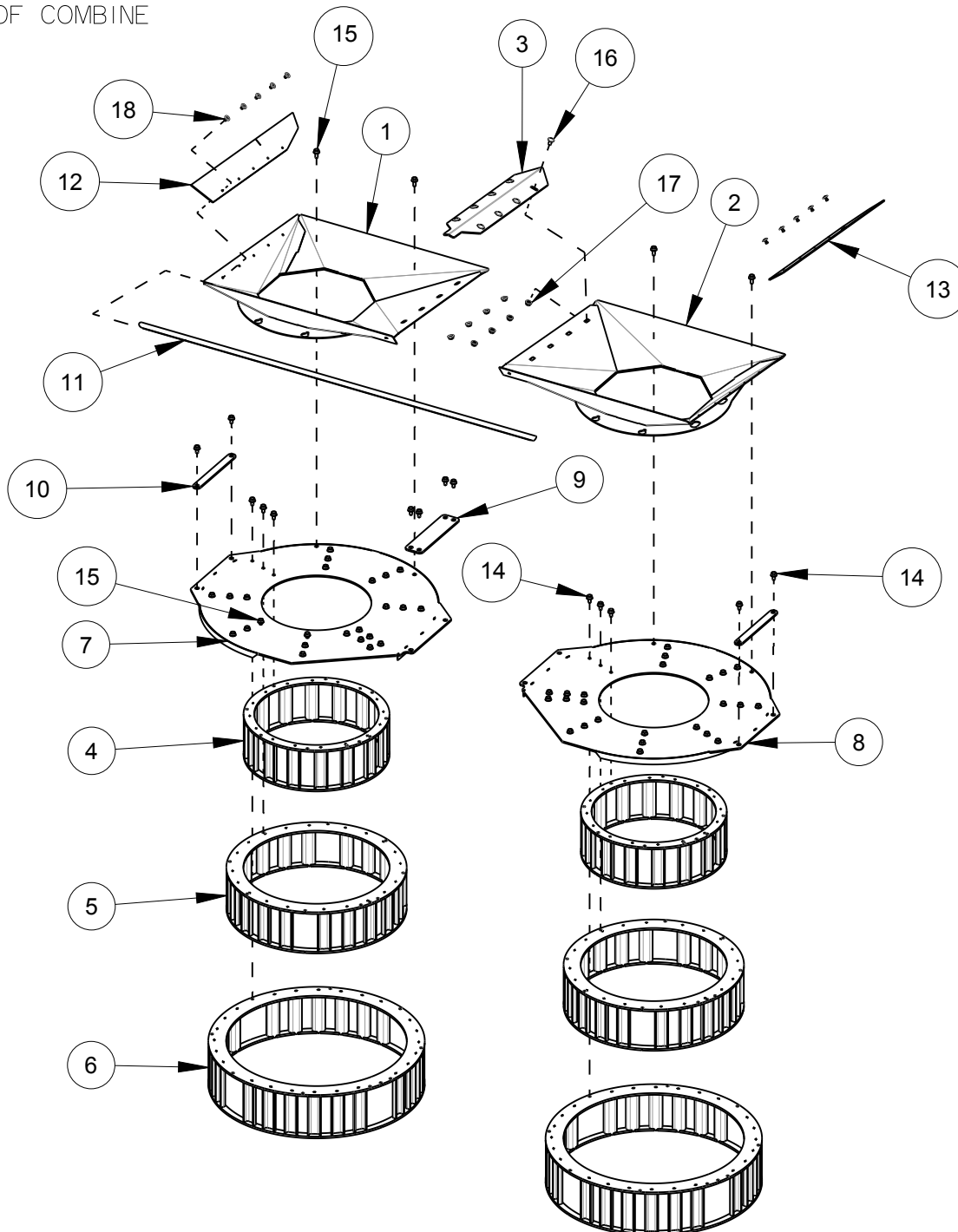
Date:27DEC2024

Serial No Range From:  
SCFA0001

Serial No Range To:  
PRESENT



FRONT OF COMBINE



SC006-08

Indicate implement serial number with any parts order

**REDEKOP**

## Inlets and Stators

Date:27DEC2024		Serial No Range From: SCFA0001	Serial No Range To: PRESENT	
ITEM NO.	PART NO.	DESCRIPTION	QTY	NOTE
1	AF15OCL	INLET - LEFT - FENDT - CHARCOAL	1	
2	AF15OCR	INLET - RIGHT - FENDT -CHARCOAL	1	
3	AF15IC	CAP - INLETS - FENDT - CHARCOAL	1	
4	SCI31H	STATOR RING INNER	2	
5	SCI32H	STATOR RING MIDDLE	2	
6	SCI33H	STATOR RING OUTER	2	
7	SCI77CL	STATOR TOP LT - CHARCOAL	1	
8	SCI77CR	STATOR TOP RT - CHARCOAL	1	
9	SC215C	PLATE HOUSING LINK - CHARCOAL	1	
10	SC260C	LINK SCU POST - CHARCOAL	2	
11	AF125-OI	BULB SEAL	1	
12	AF212-OIL	RUBBER FLASHING INLET SCU - LEFT	1	
13	AF212-OIR	RUBBER FLASHING INLET SCU - RIGHT	1	
14	B21M-0816	BOLT FLG M8X16 C8.8 YZD Iso8102	58	
15	B21M-0820	BOLT FLG M8X20 C8.8 YZD Iso8102	8	
16	B31M-0816	BOLT RH M8x16 C8.8 YZD ISO8678 Short Neck	8	
17	N21M-08	NUT FLG M8 C8 YZD Iso4161	8	
18	RO3-08H	RIVET SS 0.188 x .375L LARGE FLANGE	10	
	SCI33K	KIT, GAPPED STATOR RINGS	2	INCLUDES SCI31H, SCI32H, SCI33H

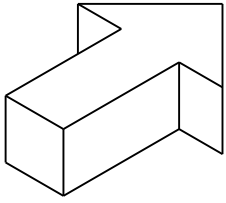
SC006-08

Indicate implement serial number with any parts order

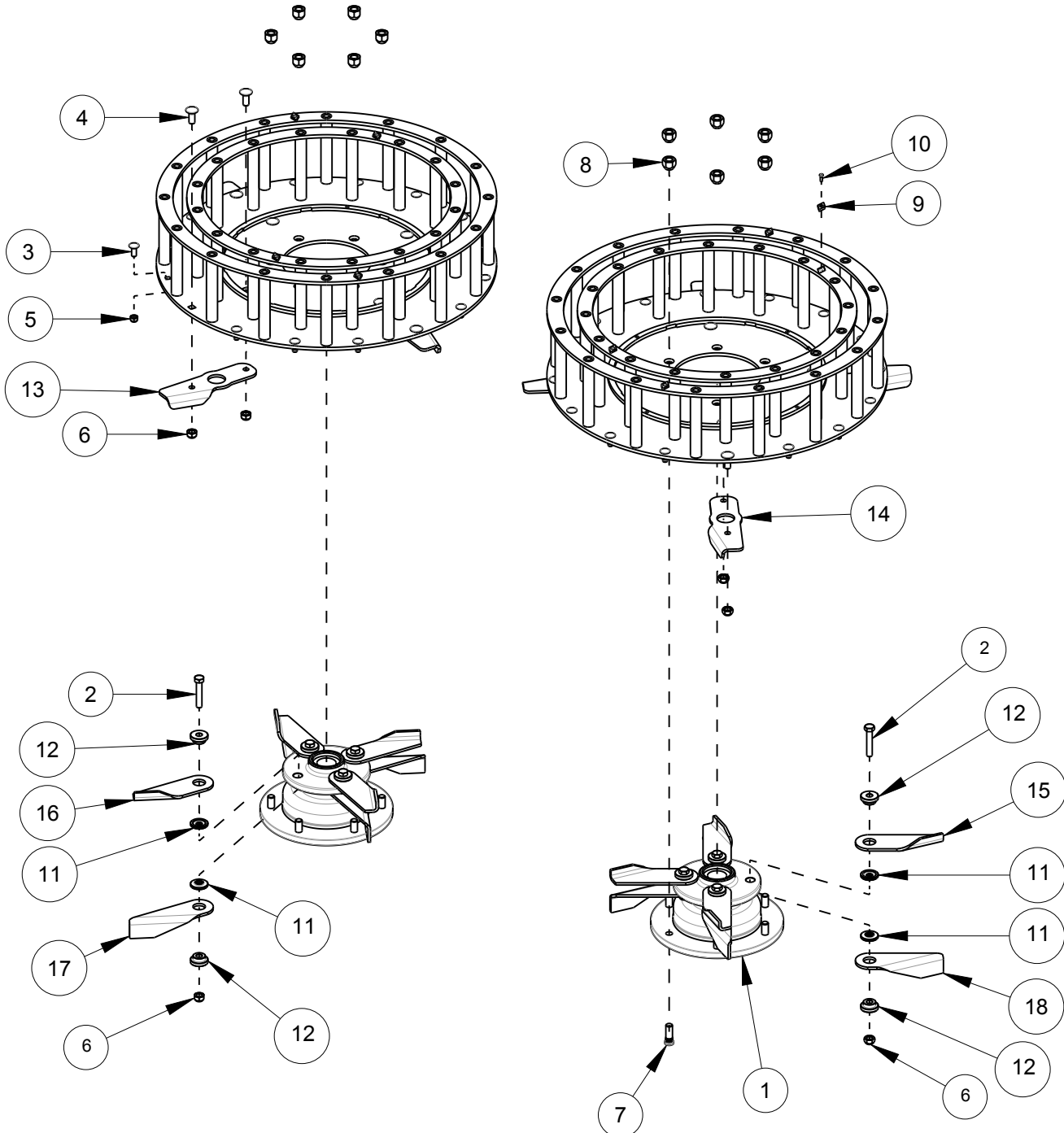
Date:27DEC2024

Serial No Range From:  
SCFA0001

Serial No Range To:  
PRESENT



FRONT OF COMBINE



SC006-08

Indicate implement serial number with any parts order

## Rotors

Date:27DEC2024		Serial No Range From: SCFA0001		Serial No Range To: PRESENT	
ITEM NO.	PART NO.	DESCRIPTION	QTY	NOTE	
1	RP1049A	HUB ASSY SCU ROTOR	2	INCLUDES RP987	
2	B12M-1055	BOLT HEX M10x55 C10.9 YZD Iso4014	8		
3	B31M-0820	BOLT RH M8x20 C8.8 YZD ISO8678 Short Neck	24		
4	B31M-1025	BOLT RH M10x25 C8.8 YZD ISO8678 Short Neck	16		
5	N42M-08	NUT LOCK STL M8 C10 YZD DIN980V	24		
6	N42M-10	NUT LOCK STL M10 C10 YZD DIN980V	24		
7	RP987	BOLT STUD M12-1.5 35L C10.9 ZN	12		
8	RP1012	NUT WHEEL M12-1.5 C10 ZN	12		
9	RP1017	SCRAPER SC ROTOR TOP	8	NSS - RP1017K	
10	RP1028	SCREW TAPER HEAD TORX M4x14 BLK	8	NSS - RP1017K OR RP1028K	
11	SC163-01	BUSHING BLADE SCU INNER	16	NSS - SC174K	
12	SC165H	BUSHING BLADE SCU OUTER /H	16	NSS - SC174K	
13	SC204LC	BLADE SC DISC BTM LT /C	4	NSS - SC253CK	
14	SC204RC	BLADE SCU RT ROTOR BTM /C	4	NSS - SC253CK	
15	SC252LC	BLADE FAN LT SCU /C 0.78w	4	NSS - SC253CK	
16	SC252RC	BLADE FAN RT SCU /C 0.78w	4	NSS - SC253CK	
17	SC253LC	BLADE FAN LT SCU /C 1.5w	4	NSS - SC253CK	
18	SC253RC	BLADE FAN RT SCU /C 1.5w	4	NSS - SC253CK	
19	SC130A	ROTOR SCU /SERVICE 16/16	2	INCLUDES 3, 5, 9, 10	
	SC174K	KIT, BUSHING BLADE SCU (32)	1	INCLUDES 6, 11, 12	
	SC253CK	KIT, BUSHING FAN SCU (12L/12R)	1	INCLUDES 2,3,6,13,14,15,16,17,18	
	RP1017K	KIT, SCRAPER SCU ROTOR (8)	1	INCLUDES 9, 10	
	RP1028K	KIT, SCREW TAPER HEAD TORX M4x14L (16)		INCLUDES 16PCS RP1028	
	RP1130K	KIT, BALANCE & FAN BLADE HARDWARE SCU ROTOR		INCLUDES 24PCS B31M-0820 & N42M-08, 16PCS B31M-1025 & N42M-10	

NSS = NOT SERVICED SEPARATELY

SC006-08

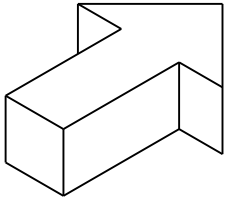
Indicate implement serial number with any parts order

**REDEKOP**<sup>TM</sup>

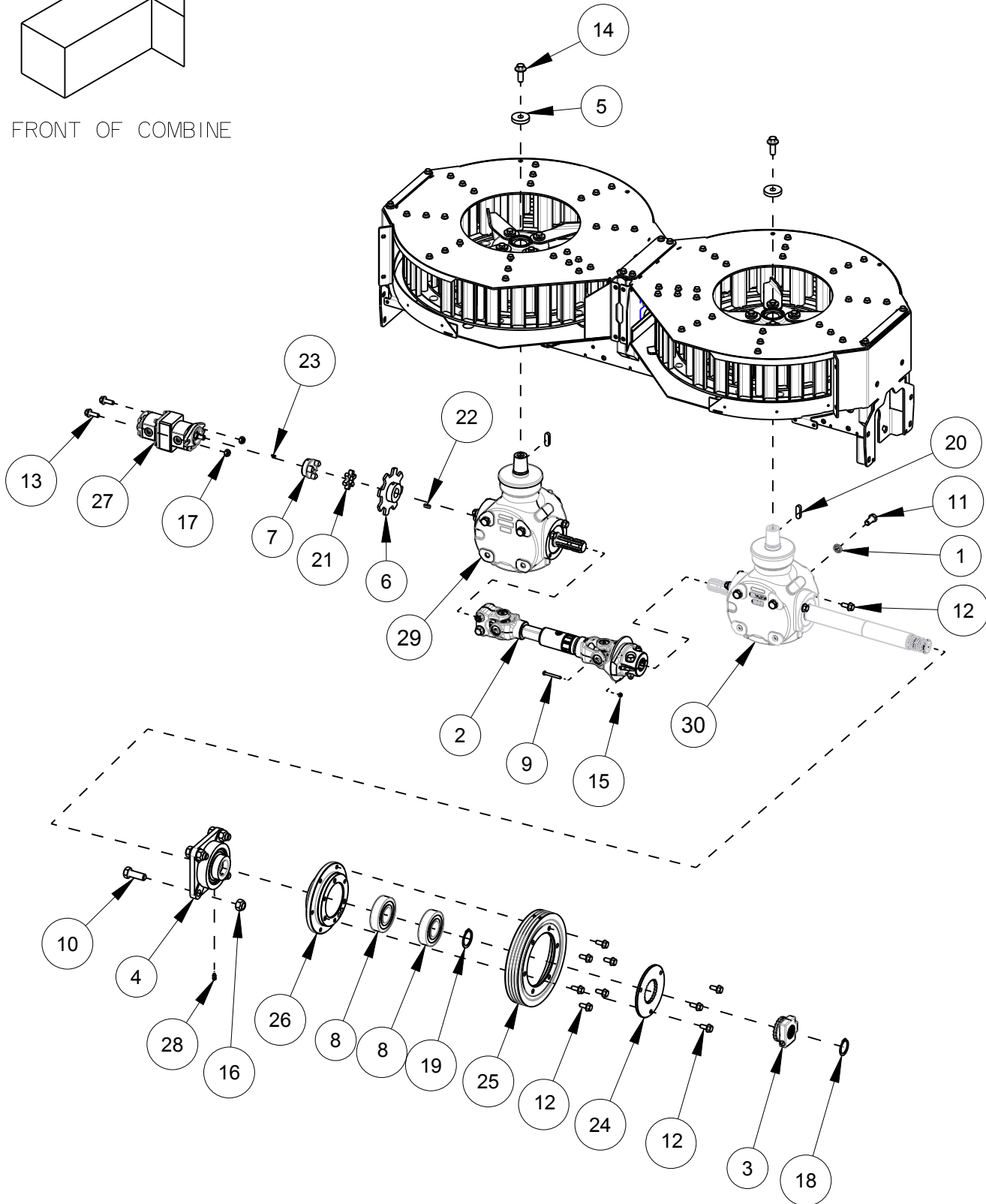
Date: 27DEC2024

Serial No Range From:  
SCFA0001

Serial No Range To:  
SCFA0199



FRONT OF COMBINE



SC006-08

Indicate implement serial number with any parts order

# Driveline Assembly

**Date:27DEC2024** **Serial No Range From: SCFA0001** **Serial No Range To: SCFA199**

ITEM NO.	PART NO.	DESCRIPTION	QTY	NOTE
1	RPI041	WASHER WEDGE LOCK M14 PAIR	8	
2	RPI193	DRIVELINE ASSY 1.375-6 SPLINE w/ SHEARBOLT	1	
3	RPI162A	COUPLER DRIVE ASSY 24T/ 2IT EXT	1	
4	RPI222A	BEARING ASSY 45mm HD ECL4B CAST FLG	1	INCLUDES RPI446
5	SCI13Z	WASHER ROTOR SCU	2	
6	SCI53Z	PICKUP, SPEED SENSOR 8 LUG YZD	1	S/S - SCIO42A
7	SC226Z	COUPLING 3 JAW	1	
8	87624213	BEARING, 45mm ID	2	
9	BIIM-0650	BOLT HEX M6X50 C8.8 YZD Iso4014	1	
10	BIIM-1850	BOLT HEX M18X50 C8.8 YZD Iso4014	4	
11	BI2M-1430	BOLT HEX M14X30 C10.9 YZD Iso4014	8	
12	B2IM-1025	BOLT FLG M10X25 C8.8 YZD Iso8102	17	
13	B2IM-1030	BOLT FLG M10X30 C8.8 YZD Iso8102	2	
14	B2IM-1440	BOLT FLG M14X40 C8.8 YZD Iso8102	2	
15	N4IM-06	NUT LOCK STL M6 C8 YZD DIN980V	1	
16	N4IM-18	NUT LOCK STL M18 C10 YZD DIN980V	4	
17	N42M-10	NUT LOCK STL M10 C10 YZD DIN980V	2	
18	Q23M-40	SNAP RING, EXT M40 YZD	1	
19	Q23M-45	SNAP RING, EXT M45 YZD	1	
20	RPI007	KEY, OVAL 12mm x 8mm x 40mm L Steel Oiled	2	
21	RPI051	COUPLING, SPIDER JAW	1	
22	RPI079	KEY, OVAL 0.25in x 0.25in x 0.75in L Steel Oiled	1	
23	RPI082	KEY, OVAL 0.125in x 0.125in x 0.5in L Steel Oiled	1	
24	RPI117	COUPLING SHEAVE 2IT	1	
25	RPI159	SHEAVE RING SCU 4M 10.83 OD	1	
26	RPI160	HUB 4PVM SCU DRIVEN OFFSET	1	
27	RPI197	PUMP, HYD, CW	1	
28	RPI446	ZERK GREASE 45-DEG M6-1	1	
29	RPI112	GEARBOX, 1:1.35 CCW 6 SPLINE, TAPERED	1	
30	RPI143	GEARBOX, 1:1.35 CW 6 SPLINE, TAPERED, LONG SHAFT	1	
	RPI074	GEAR OIL, 75W90 EXTREME PRESSURE SYNTHETIC GL5		

S/S = SUPERSEDED BY

SC006-08

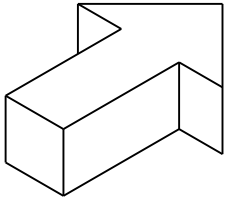
Indicate implement serial number with any parts order

**REDEKOP**

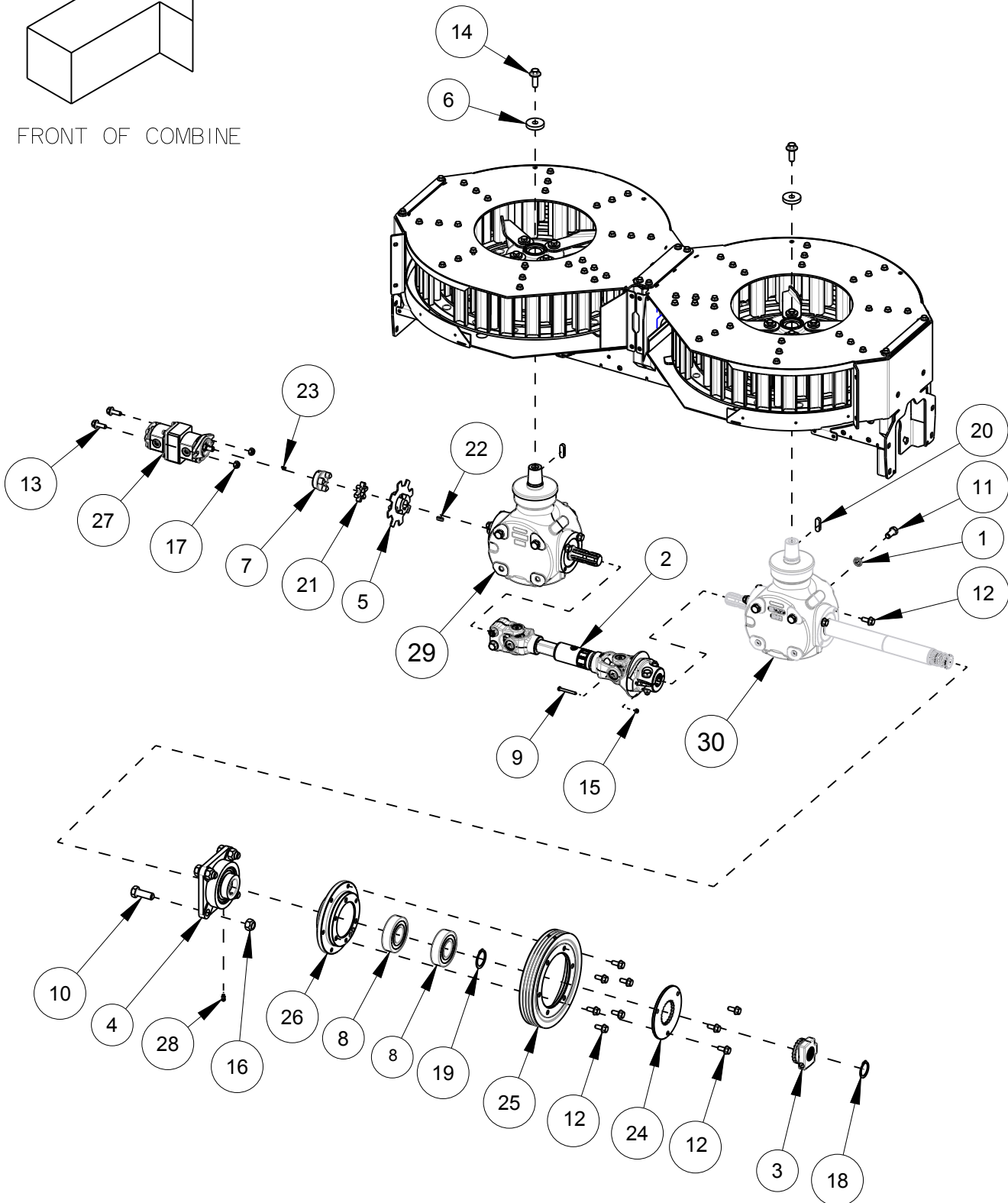
Date: 27DEC2024

Serial No Range From:  
SCFA0200

Serial No Range To:  
PRESENT



FRONT OF COMBINE



SC006-08

Indicate implement serial number with any parts order

# Driveline Assembly

**Date:27DEC2024** **Serial No Range From: SCFA0200** **Serial No Range To: PRESENT**

ITEM NO.	PART NO.	DESCRIPTION	QTY	NOTE
1	RPI041	WASHER WEDGE LOCK M14 PAIR	8	
2	RPI193	DRIVELINE ASSY 1.375-6 SPLINE w/ SHEARBOLT	1	
3	RPI162A	COUPLER DRIVE ASSY 24T/ 2IT EXT	1	
4	RPI222A	BEARING ASSY 45mm HD ECL4B CAST FLG	1	INCLUDES RPI446
5	SC1042A	PICKUP, SPEED SENSOR 8 LUG	1	
6	SC113Z	WASHER ROTOR SCU	2	
7	SC226Z	COUPLING 3 JAW	1	
8	87624213	BEARING, 45mm ID	2	
9	BI1M-0650	BOLT HEX M6X50 C8.8 YZD Iso4014	1	
10	BI1M-1850	BOLT HEX M18X50 C8.8 YZD Iso4014	4	
11	BI2M-1430	BOLT HEX M14X30 C10.9 YZD Iso4014	8	
12	B21M-1025	BOLT FLG M10X25 C8.8 YZD Iso8102	17	
13	B21M-1030	BOLT FLG M10X30 C8.8 YZD Iso8102	2	
14	B21M-1440	BOLT FLG M14X40 C8.8 YZD Iso8102	2	
15	N41M-06	NUT LOCK STL M6 C8 YZD DIN980V	1	
16	N41M-18	NUT LOCK STL M18 C10 YZD DIN980V	4	
17	N42M-10	NUT LOCK STL M10 C10 YZD DIN980V	2	
18	Q23M-40	SNAP RING, EXT M40 YZD	1	
19	Q23M-45	SNAP RING, EXT M45 YZD	1	
20	RPI007	KEY, OVAL 12mm x 8mm x 40mm L Steel Oiled	2	
21	RPI051	COUPLING, SPIDER JAW	1	
22	RPI079	KEY, OVAL 0.25in x 0.25in x 0.75in L Steel Oiled	1	
23	RPI082	KEY, OVAL 0.125in x 0.125in x 0.5in L Steel Oiled	1	
24	RPI117	COUPLING SHEAVE 2IT	1	
25	RPI159	SHEAVE RING SCU 4M 10.83 OD	1	
26	RPI160	HUB 4PVM SCU DRIVEN OFFSET	1	
27	RPI197	PUMP, HYD, CW	1	
28	RPI446	ZERK GREASE 45-DEG M6-1	1	
29	RPI112	GEARBOX, 1:1.35 CCW 6 SPLINE, TAPERED	1	
30	RPI143	GEARBOX, 1:1.35 CW 6 SPLINE, TAPERED, LONG SHAFT	1	
	RPI074	GEAR OIL, 75W90 EXTREME PRESSURE SYNTHETIC GL5		

SC006-08

Indicate implement serial number with any parts order

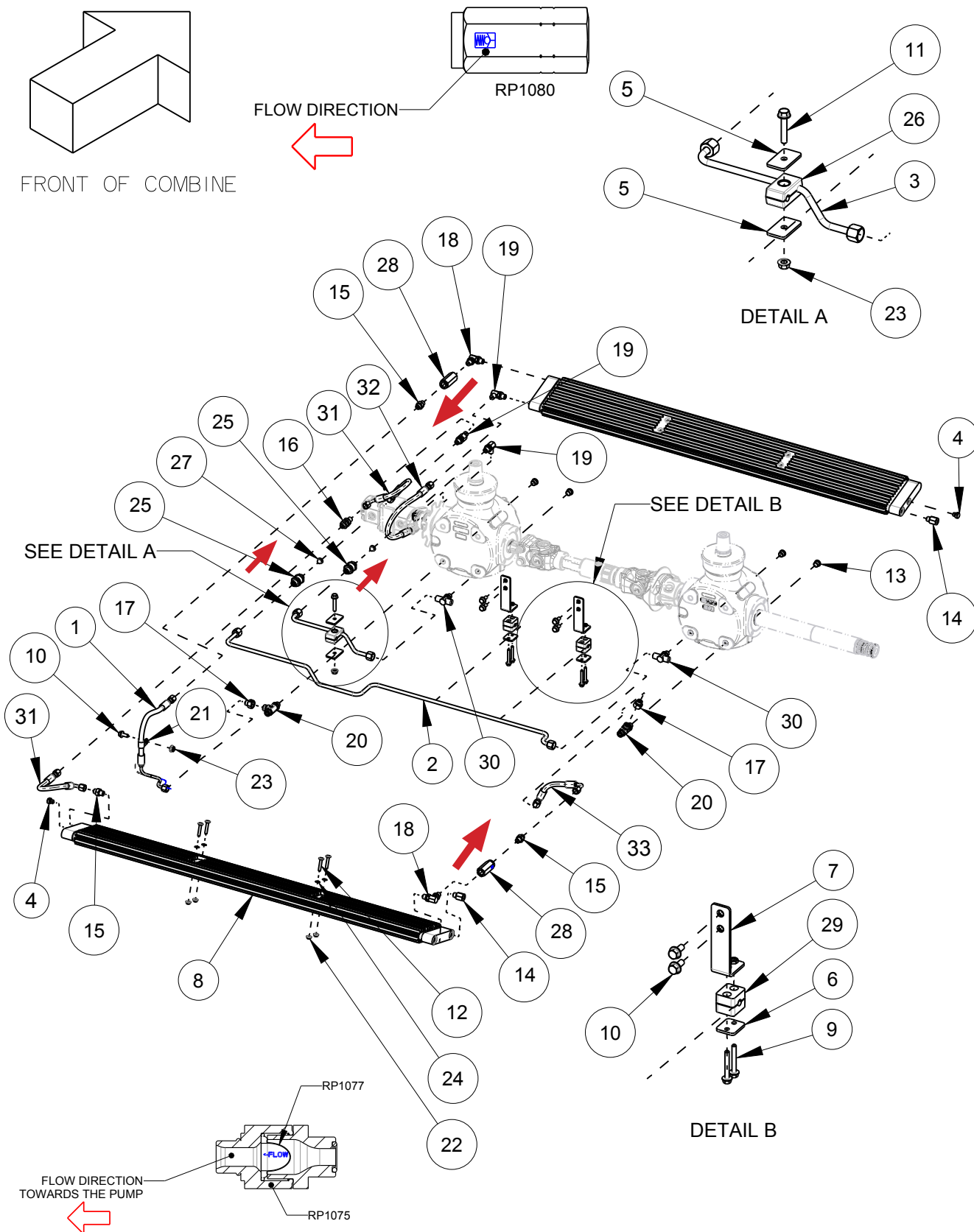
**REDEKOP**<sup>TM</sup>

# Oil Cooler Assembly

Date:27DEC2024

Serial No Range From:  
SCFA0001

Serial No Range To:  
PRESENT



SC006-08

Indicate implement serial number with any parts order

**REDEKOP**

# Oil Cooler Assembly

**Date:27DEC2024** **Serial No Range From: SCFA0001** **Serial No Range To: PRESENT**

ITEM NO.	PART NO.	DESCRIPTION	QTY	NOTE
1	HHI63	HYD GEARBOX FEED LT	1	
2	HTI09	HYD TUBE 0.375OD 4I.5L RH DR SCU	1	
3	HTIII	HYD TUBE 0.375OD 10.2L RH DR SCU	1	
4	RPI235A	PLUG, MIOx1.5 ORB COOLER SCU w/ O-RING	2	
5	SCIII2	PLATE HYD BLOCK YZD	2	
6	SCII5Z	PLATE HYD BLOCK 2H YZD	2	
7	SCI23Z	BRACKET MID HYD LINE YZD	2	
8	SC30IW	COOLER SCU	2	
9	B2IM-0645	BOLT FLG M6X45 C8.8 YZD Iso8102	4	
10	B2IM-0820	BOLT FLG M8X20 C8.8 YZD Iso8102	5	
11	B2IM-0845	BOLT FLG M8X45 C8.8 YZD Iso8102	1	
12	B3IM-0635	BOLT RH M6X35 C8.8 YZD ISO8678 Short Neck	8	
13	H20-06	FIT HYD PLUG SOCKET 6 MORB	4	
14	H25-0602FP	HYD FIT STR 6MB 2FP	2	
15	H25-0604MFS	HYD FIT STR 6MB 4MORFS	3	
16	H28-0404BH	HYD FIT STR 4MORFS 4MORFS BLKHD	1	
17	H28-0406FF	HYD FIT STR 04 MORFS - 06 FORFS	2	
18	H35-0606	FIT HYD 90DEG 6MB 6MB	2	
19	H35-0604MFS	FIT HYD 90DEG 6MB 4MORFS	3	
20	H41-0606060FS	HYD FIT TEE 6 MORB - 6MORFS - 6MORFS RUN	2	
21	H99-08	TUBE STRAP 0.5 OD, .375 HOLE ZN RUBBER	1	
22	N2IM-06	NUT FLG M6 C8 YZD Iso416I	8	
23	N2IM-08	NUT FLG M8 C8 YZD Iso416I	2	
24	N63M-06	NUT PUSH M6 YZD	8	
25	RPI075	FILTER SUCTION 6 MORB 6 MORFS	2	
26	RPI076	TUBE CLAMP HYD 0.375 ID x2	1	
27	RPI077	FILTER ELEMENT	2	NSS - RPI075
28	RPI080	VALVE CHECK 6 FORB	2	
29	RPI083	TUBE CLAMP HYD 0.375 ID SINGLE	2	
30	SC365-01	FIT HYD TEE TEMP SENSOR	2	
31	HHI28	HOSE HYD 1/4 x 283mm 4 FORFSX - 4 FORFSX90SHORT	2	
32	HHI30	HOSE HYD 1/4 x 379mm 4 FORFSX - 4 FORFSX90MED	1	
33	HHI33	HOSE HYD 1/4 x 204mm 4 FORFSX - 4 FORFSX90MED	1	

NSS = NOT SERVICED SEPARATELY

SC006-08

Indicate implement serial number with any parts order

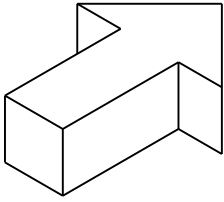
**REDEKOP**<sup>TM</sup>

# Oil Cooler Sight Glass Assembly

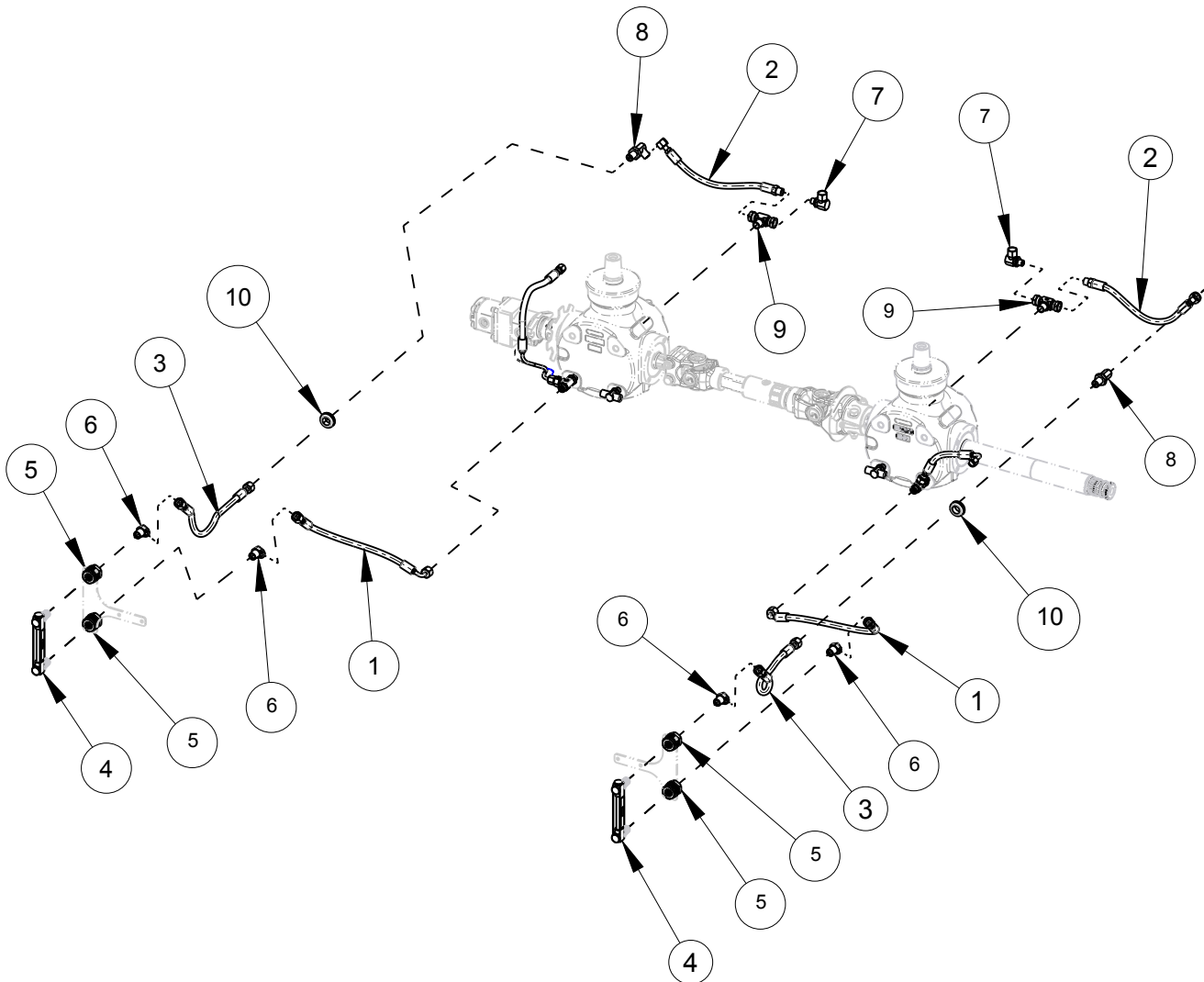
Date:27DEC2024

Serial No Range From:  
SCFA0001

Serial No Range To:  
PRESENT



FRONT OF COMBINE



SC006-08

Indicate implement serial number with any parts order

**REDEKOP**<sup>TM</sup>

# Oil Cooler Sight Glass Assembly

**Date:**27DEC2024      **Serial No Range From:** SCFA0001      **Serial No Range To:** PRESENT

ITEM NO.	PART NO.	DESCRIPTION	QTY	NOTE
1	HH158	HOSE HYD 1/4 x 409mm SAE 100R6, 6 FORFSX - 6 FORFSX90SHORT	1	
2	HH161	HOSE HYD 1/4 x 329mm SAE 100R6, 6 FORFSX - 6 MNPT	1	
3	HH162	HOSE HYD 1/4 x 344mm SAE 100R6, 6 FORFSX - 6 FORFSX	1	
4	RPI438A	HYD SIGHT GLASS 6 MNPT - ASSEMBLY	2	
5	H26-0606FP	FIT HYD STR BULKHEAD 6FNPT - 6FNPT	4	
6	H33-0606MP	HYD FIT 45DEG 06 MORFS - 06 MNPT	4	
7	H35-0606FP	FIT HYD 90DEG 6MB 6FP	2	
8	H38-0606BH	FIT HYD 90DEG 6MORFS 6MORFS BLKHD	2	
9	H52-060606MP	HYD FIT TEE 6 FNPT - 6 FNPT - 6 MNPT	2	
10	RPI26	GROMMET .75ID 1.063H .188TK	2	

SC006-08

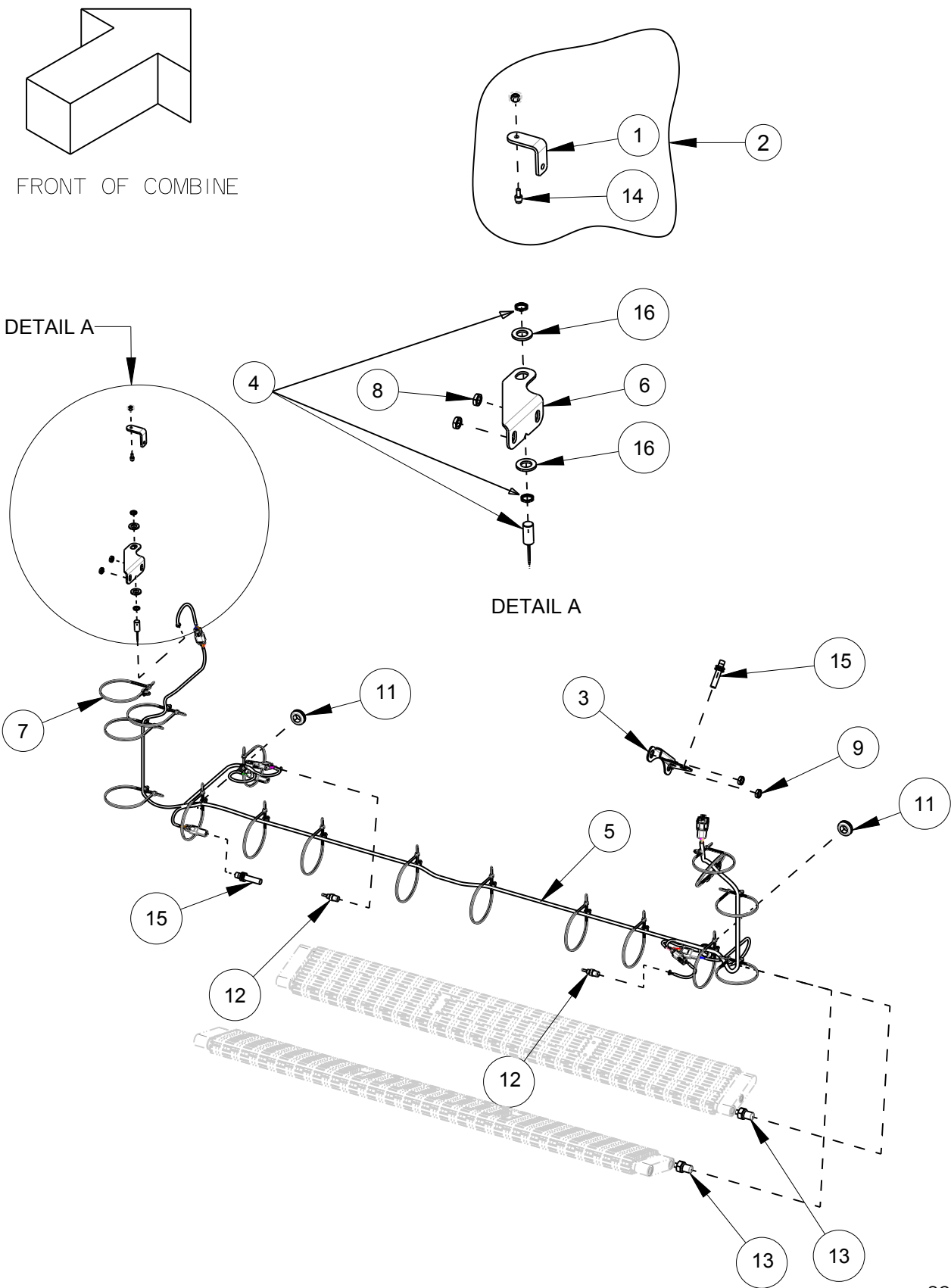
Indicate implement serial number with any parts order

**REDEKOP**<sup>TM</sup>

Date:27DEC2024

Serial No Range From:  
SCFA0001

Serial No Range To:  
PRESENT



SC006-08

## Harness and Sensors

Date:27DEC2024		Serial No Range From: SCFA0001	Serial No Range To: PRESENT	
ITEM NO.	PART NO.	DESCRIPTION	QTY	NOTE
1	CD740C	TAB SCU PROXIMITY SNSR - CHARCOAL	1	NSS - CD740CA
2	CD740CA	ASSY PROX SENSOR TARGET - CHARCOAL	1	INCLUDES CD740C, RPI101, RPI102
3	CS833Z	MOUNT PLATE AFX SPEED SENSOR - YZD	1	
4	RPI125	SENSOR PROXIMITY 6" LEAD	1	
5	RPI184	HARNESS SCU RH DRIVE NARROW	1	
6	SC846C	BRACKET, DOOR SNSR MT - CHARCOAL	1	
7	87741307	CABLE TIE, FIR TREE	17	
8	N3IM-08	NUT HEX JAM METRIC GENERIC	2	
9	N3IM-12	NUT HEX JAM METRIC GENERIC	2	
10	N53-08	LOCK NUT #8-32 X .75 NYLON	1	
11	RPI26	GROMMET .75ID 1.063H .188TK	3	
12	RPI069	SENSOR, OIL TEMP	2	
13	RPI070	SENSOR, PRESSURE SWITCH	2	
14	RPI101	MAGNET, ACTUATOR	1	
15	RPI124	SENSOR, SPEED 15IN CABLE	2	
16	WIIM-12	WASHER FLAT M12 x 23.5 x 2.4 YZD	2	
	RPI400	HARNESS EXT SCU IDEAL	1	
	RPI401	HARNESS EXT DOOR POS IDEAL SCU	1	

NSS = NOT SERVICED SEPARATELY

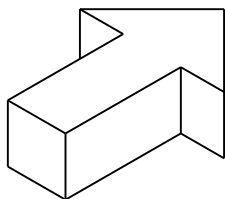
SC006-08

Indicate implement serial number with any parts order

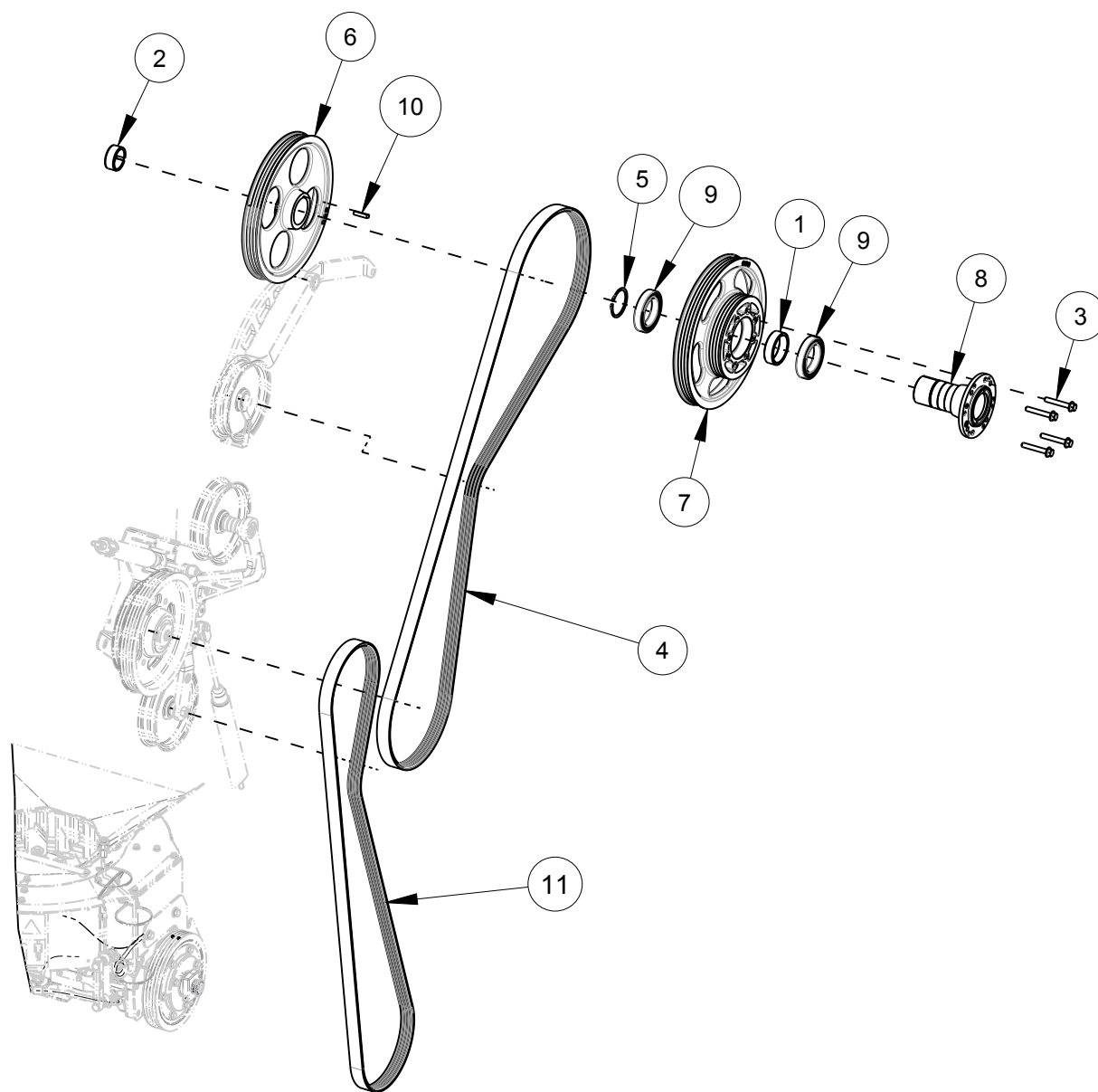
Date:27DEC2024

Serial No Range From:  
SCFA0001

Serial No Range To:  
PRESENT



FRONT OF COMBINE



SC006-08

Indicate implement serial number with any parts order

# Vbelts and Sheaves

**Date:**27DEC2024      **Serial No Range From:** SCFA0001      **Serial No Range To:** PRESENT

ITEM NO.	PART NO.	DESCRIPTION	QTY	NOTE
1	SC640Z	SPACER 75MM BRG FENDT DRIVE - YZD	1	
2	SC641Z	SPACER 55MM BRG FENDT DRIVE - YZD	1	
3	B2IM-1280	BOLT FLG M12X80 C8.8 YZD Iso8102	4	
4	BE4MI44K	VBELT 4M x 144L KEVLAR	1	
5	Q23M-75	SNAP RING EXT M75 DIN471 YZD	1	
6	RPI308	SHEAVE DRIVER J/S IDEAL SCU	1	
7	RPI309	SHEAVE CHOPPER DRIVER 4M IDEAL	1	
8	RPI310	IDEAL CHOPPER DRIVER HUB	1	
9	RPI333	BEARING BALL FLAT 75ID 115OD 20W	2	
10	SC643-01	KEY 14 X 9 X 40L	1	
11	BE4MI28K	VBELT 4M X 128L KEVLAR	1	

SC006-08

Indicate implement serial number with any parts order

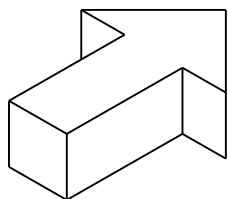


# Idler Arm SCU Belt Tensioner

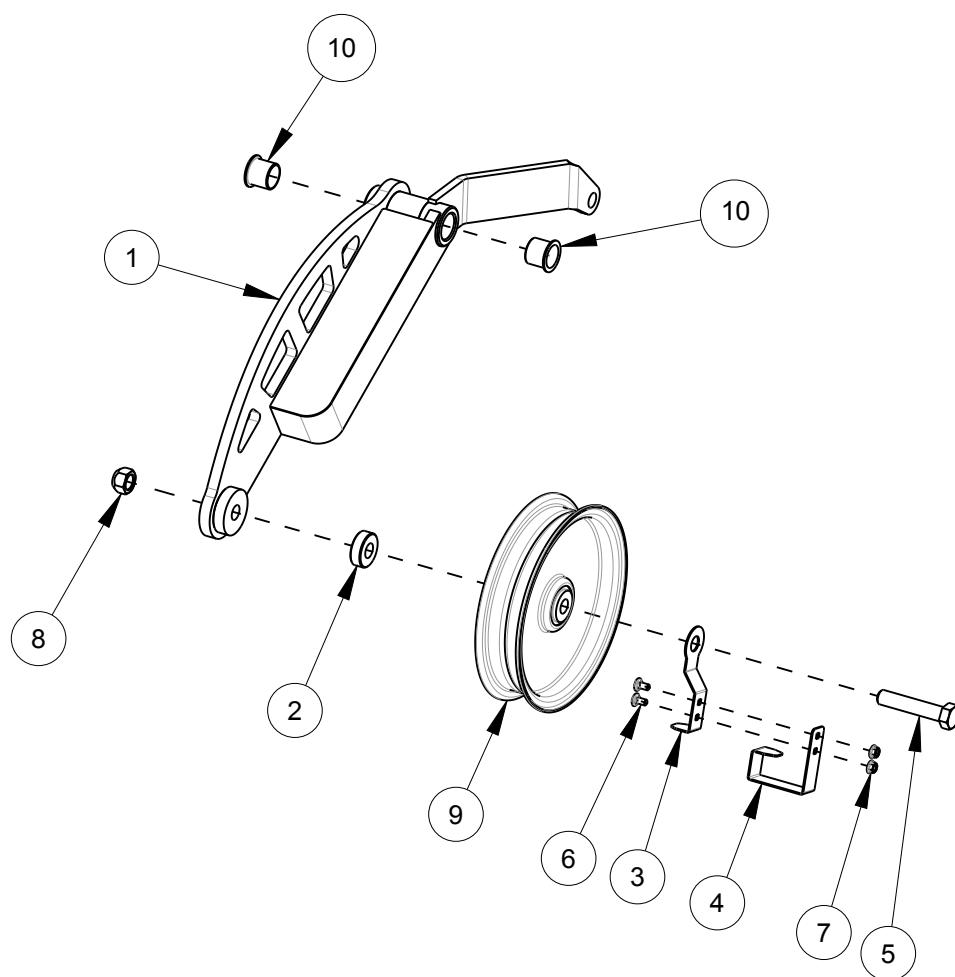
Date:27DEC2024

Serial No Range From:  
SCFA0001

Serial No Range To:  
PRESENT



FRONT OF COMBINE



SC006-08

Indicate implement serial number with any parts order

# Idler Arm SCU Belt Tensioner

**Date:**27DEC2024 **Serial No Range From:** SCFA0001 **Serial No Range To:** PRESENT

ITEM NO.	PART NO.	DESCRIPTION	QTY	NOTE
1	AFI3IC	IDLER ARM SCU BELT TENSIONER - CHARCOAL	1	
2	AFI36Z	SPACER IDLER 38.1mmOD x 16.5mmIDx12.5mmL - YZD	1	
3	SCI98C	SCRAPER RT IDLER DRV TOP - CHARCOAL	1	
4	SCI99C	SCRAPER IDLER LT DRV TOP - CHARCOAL	1	
5	BIIM-1680	BOLT HEX M16X80 C8.8 YZD Iso4014	1	
6	B3IM-0612	BOLT RH M6X12 C8.8 YZD ISO8678 Short Neck	2	
7	N2IM-06	NUT FLG M6 C8 YZD Iso4161	2	
8	N42M-16	NUT LOCK STL M16 C10 YZD DIN980V	1	
9	RP247	IDLER 8PD 2.0W .630ID	1	
10	RPI382	BUSHING IDLER ARM CHOPPER IDEAL	2	

SC006-08

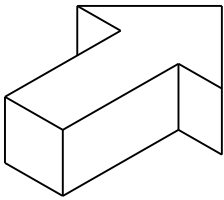
Indicate implement serial number with any parts order

# Jackshaft Upper Idler Arm & Tensioner

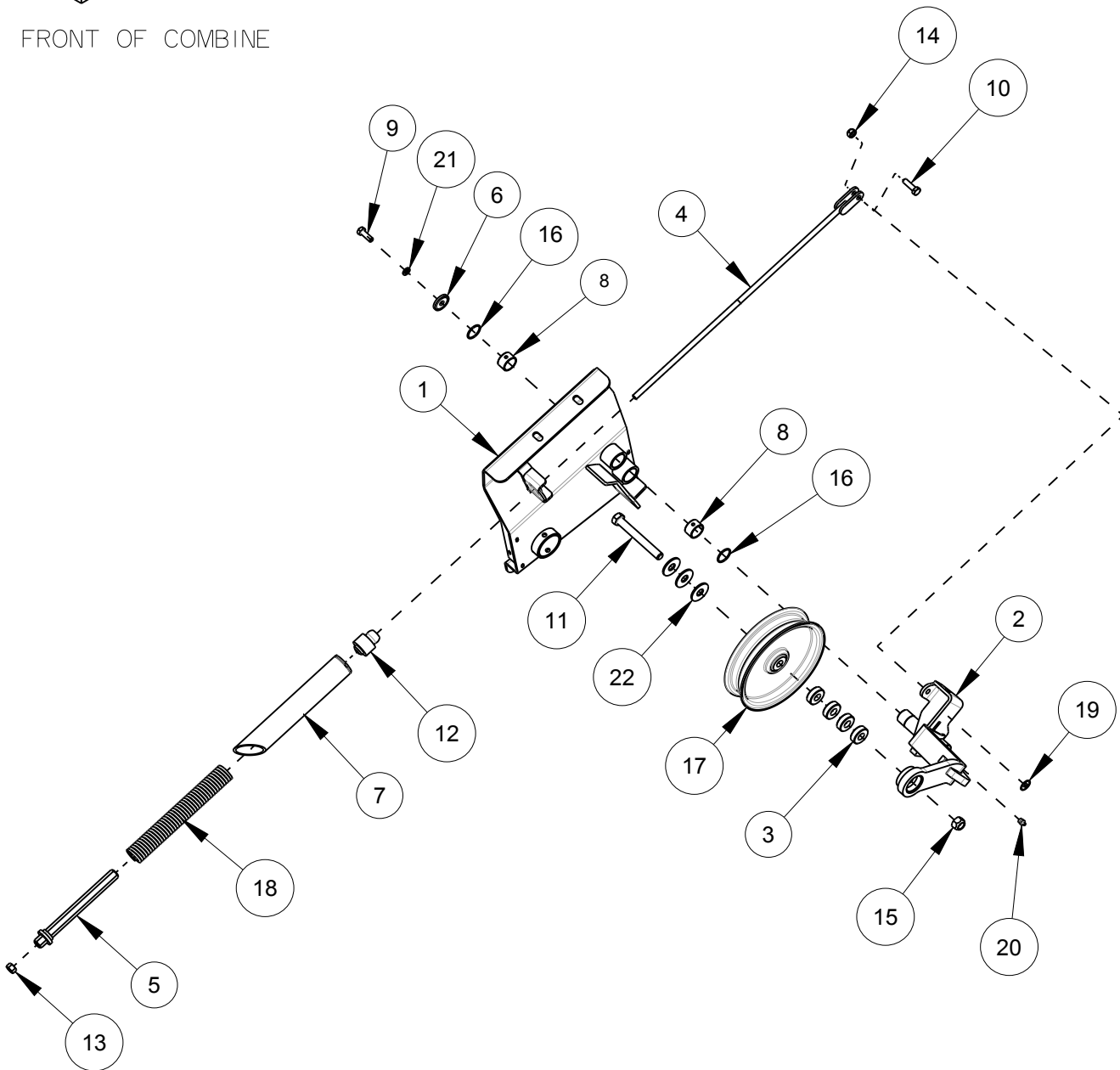
Date: 27DEC2024

Serial No Range From:  
SCFA0001

Serial No Range To:  
PRESENT



FRONT OF COMBINE



SC006-08

Indicate implement serial number with any parts order

# Jackshaft Upper Idler Arm & Tensioner

**Date:27DEC2024** **Serial No Range From: SCFA0001** **Serial No Range To: PRESENT**

ITEM NO.	PART NO.	DESCRIPTION	QTY	NOTE
1	AFI28C	JACKSHAFT FENDT SCU DRV - CHARCOAL	1	
2	AFI30C	IDLER ARM - CHARCOAL	1	
3	AFI36Z	SPACER IDLER 38.1mmOD x 16.5mmIDx12.5mmL - YZD	4	
4	SC286Z	TENSION ROD SCU YZD	1	
5	SC313Z	NUT SCU TNSN ADJ YZD	1	
6	SC338Z	WASHER SCU IDLER YZD	1	
7	SC847C	TENSION INDICATOR 290 - CHARCOAL	1	
8	420434	BUSHING DX 30ID x 20L	2	
9	BIIM-1030	BOLT HEX M10X30 C8.8 YZD Iso4014	1	
10	BIIM-1035	BOLT HEX M10X35 C8.8 YZD Iso4014	1	
11	BIIM-16130	BOLT HEX M16X130 C8.8 YZD Iso4014	1	
12	HI70141	PIVOT SPRING	1	
13	NIIM-12	NUT HEX M12 C8 YZD ISO4032	1	
14	N42M-10	NUT LOCK STL M10 C10 YZD DIN980V	1	
15	N42M-16	NUT LOCK STL M16 C10 YZD DIN980V	1	
16	OIIM-30-025	ORING RD 30mm ID x 2.5mm	2	
17	RP247	IDLER 8PD 2.0W .630ID	1	
18	RPI063	SPRING-C 1.54" OD 17" FL	1	
19	RPI092	DECAL GREASE 50 HR	1	
20	RPI118	ZERK GREASE STR M10-1.5	1	
21	W2IM-10	WASHER HELICAL LOCK M10	1	
22	W4IM-16	WASHER FLAT M16 x 44.6 x 3.0 YZD	3	

SC006-08

Indicate implement serial number with any parts order

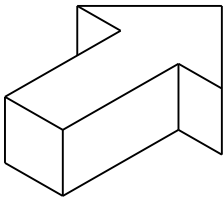
**REDEKOP**<sup>TM</sup>

# Jackshaft Lower Idler Arm & Tensioner

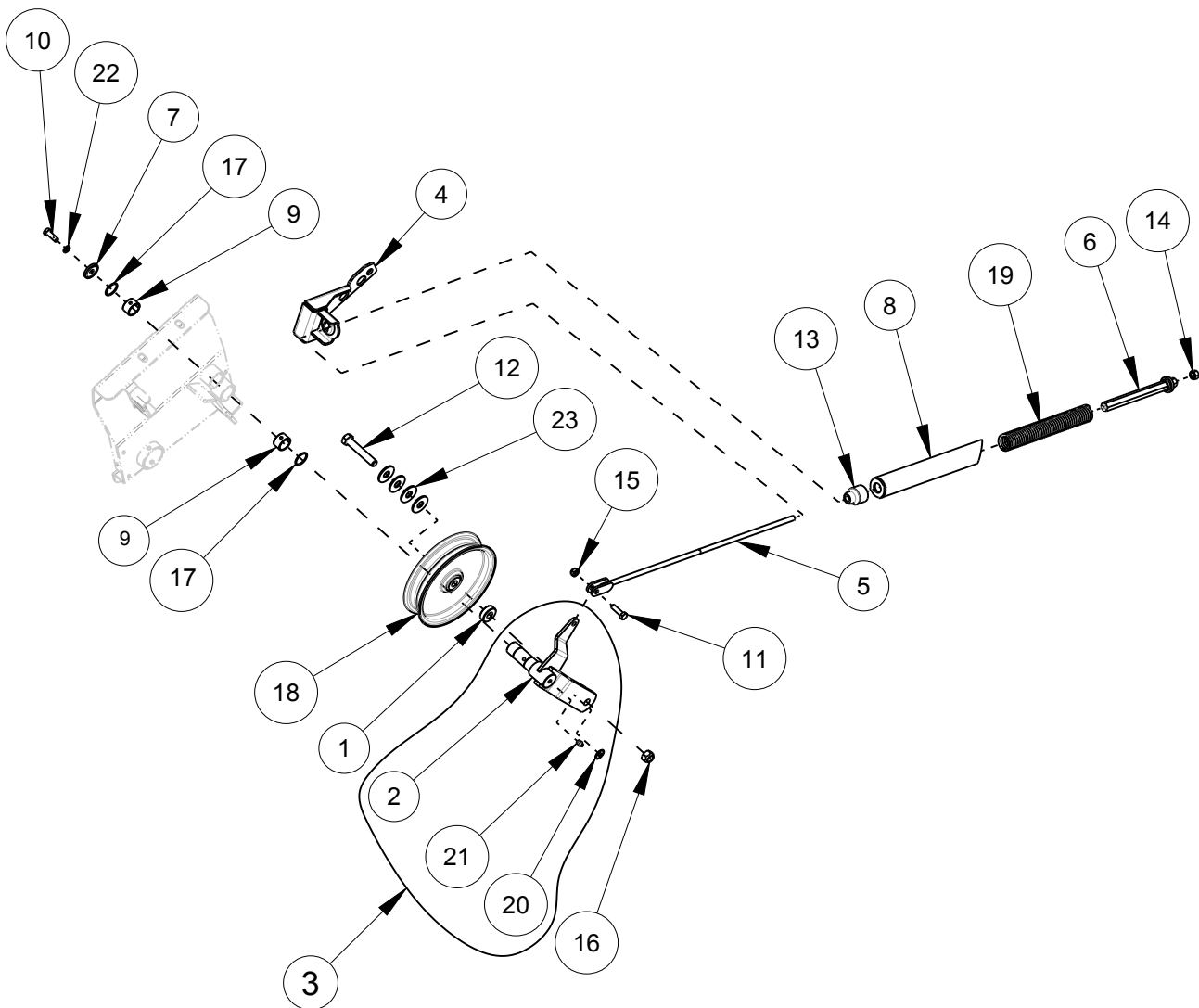
Date:27DEC2024

Serial No Range From:  
SCFA0001

Serial No Range To:  
SCFA0115



FRONT OF COMBINE



SC006-08

Indicate implement serial number with any parts order

# Jackshaft Lower Idler Arm & Tensioner

**Date:27DEC2024** **Serial No Range From: SCFA0001** **Serial No Range To: SCFA0115**

ITEM NO.	PART NO.	DESCRIPTION	QTY	NOTE
1	AFI36Z	SPACER IDLER 38.1mmOD x 16.5mmIDx12.5mmL - YZD	1	
2	AFI95C	ARM IDLER JS BELT - CHARCOAL	1	NSS - AFI95CA
3	AFI95CA	ASSY ARM IDLER JS BELT	1	
4	AFI96C	BRACKET SCU BELT TENSIONER - CHARCOAL	1	S/S - AF230C
5	SC286Z	TENSION ROD SCU YZD	1	
6	SC313Z	NUT SCU TNSN ADJ YZD	1	
7	SC338Z	WASHER SCU IDLER YZD	1	
8	SC414C	TENSION INDICATOR NARROW - CHARCOAL	1	
9	420434	BUSHING DX 30ID x 20L	2	
10	BIIM-1030	BOLT HEX M10X30 C8.8 YZD Iso4014	1	
11	BIIM-1035	BOLT HEX M10X35 C8.8 YZD Iso4014	1	
12	BIIM-1690	BOLT HEX M16X90 C8.8 YZD Iso4014	1	
13	HI70141	PIVOT SPRING	1	
14	NIIM-12	NUT HEX M12 C8 YZD ISO4032	1	
15	N42M-10	NUT LOCK STL M10 C10 YZD DIN980V	1	
16	N42M-16	NUT LOCK STL M16 C10 YZD DIN980V	1	
17	O1IM-30-025	ORING RD 30mm ID x 2.5mm	2	
18	RP247	IDLER 8PD 2.0W .630ID	1	
19	RPI063	SPRING-C 1.54" OD 17" FL	1	
20	RPI092	DECAL GREASE 50 HR	1	
21	RPII18	ZERK GREASE STR M10-1.5	1	
22	W2IM-10	WASHER HELICAL LOCK M10	1	
23	W4IM-16	WASHER FLAT M16 x 44.6 x 3.0 YZD	4	

NSS = NOT SERVICED SEPARATELY S/S = SUPERSEDED BY

SC006-08

Indicate implement serial number with any parts order

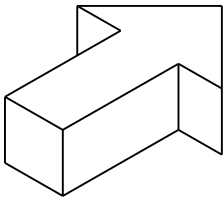
**REDEKOP**<sup>TM</sup>

# Jackshaft Lower Idler Arm & Tensioner

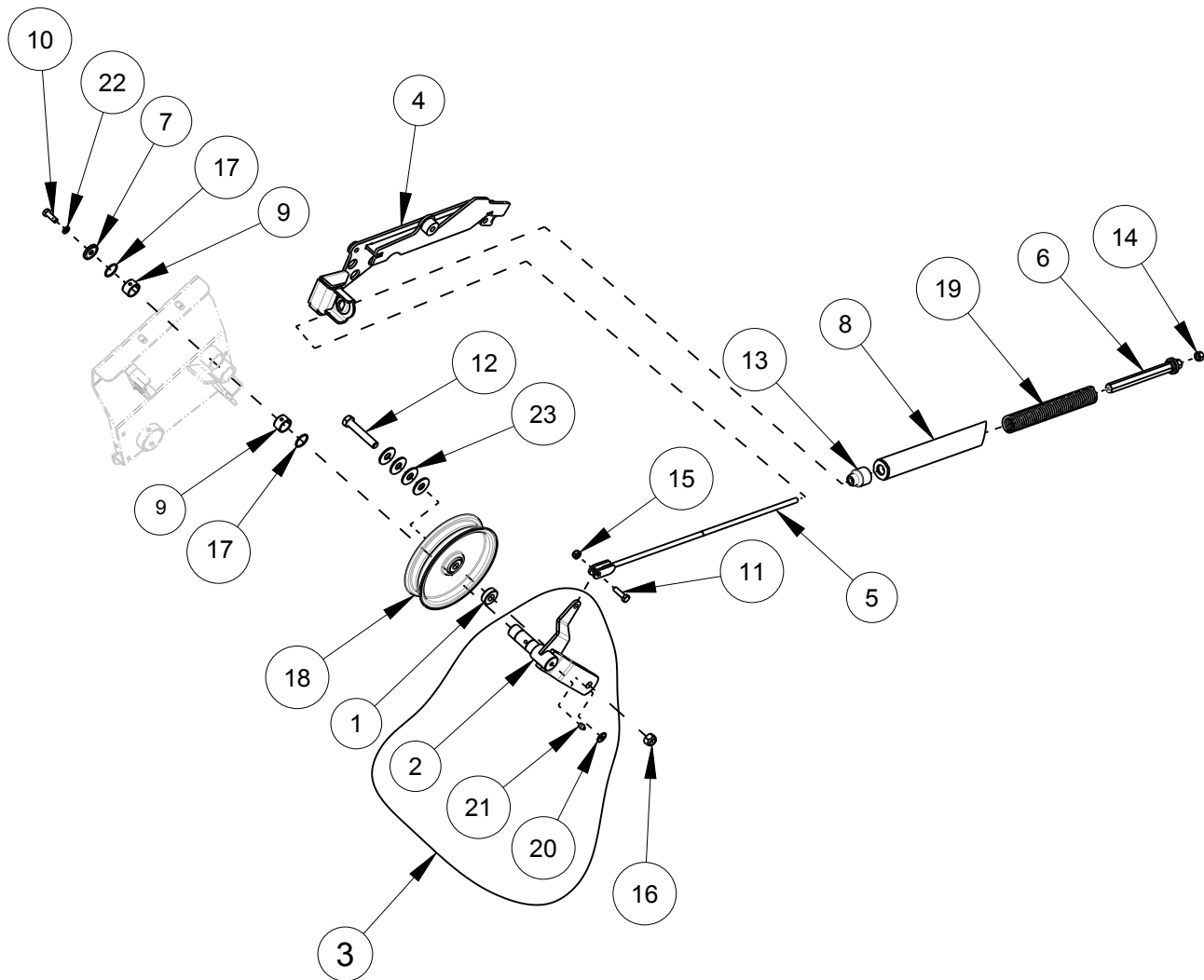
Date:27DEC2024

Serial No Range From:  
SCFA0116

Serial No Range To:  
PRESENT



FRONT OF COMBINE



SC006-08

Indicate implement serial number with any parts order

# Jackshaft Lower Idler Arm & Tensioner

**Date:27DEC2024** **Serial No Range From: SCFA0116** **Serial No Range To: PRESENT**

ITEM NO.	PART NO.	DESCRIPTION	QTY	NOTE
1	AFI36Z	SPACER IDLER 38.1mmOD x 16.5mmIDx12.5mmL - YZD	1	
2	AFI95C	ARM IDLER JS BELT - CHARCOAL	1	NSS - AFI95CA
3	AFI95CA	ASSY ARM IDLER JS BELT	1	
4	AF230C	SCU TNSN & CHPR ACTR MNT PLT - CHARCOAL	1	
5	SC286Z	TENSION ROD SCU YZD	1	
6	SC313Z	NUT SCU TNSN ADJ YZD	1	
7	SC338Z	WASHER SCU IDLER YZD	1	
8	SC414C	TENSION INDICATOR NARROW - CHARCOAL	1	
9	420434	BUSHING DX 30ID x 20L	2	
10	BIIM-1030	BOLT HEX M10X30 C8.8 YZD Iso4014	1	
11	BIIM-1035	BOLT HEX M10X35 C8.8 YZD Iso4014	1	
12	BIIM-1690	BOLT HEX M16X90 C8.8 YZD Iso4014	1	
13	HI70141	PIVOT SPRING	1	
14	NIIM-12	NUT HEX M12 C8 YZD ISO4032	1	
15	N42M-10	NUT LOCK STL M10 C10 YZD DIN980V	1	
16	N42M-16	NUT LOCK STL M16 C10 YZD DIN980V	1	
17	O1IM-30-025	ORING RD 30mm ID x 2.5mm	2	
18	RP247	IDLER 8PD 2.0W .630ID	1	
19	RPI063	SPRING-C 1.54" OD 17" FL	1	
20	RPI092	DECAL GREASE 50 HR	1	
21	RPII18	ZERK GREASE STR M10-1.5	1	
22	W2IM-10	WASHER HELICAL LOCK M10	1	
23	W4IM-16	WASHER FLAT M16 x 44.6 x 3.0 YZD	4	

NSS = NOT SERVICED SEPARATELY

SC006-08

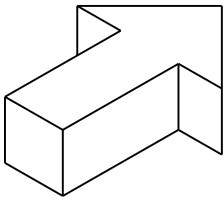
Indicate implement serial number with any parts order

**REDEKOP**<sup>TM</sup>

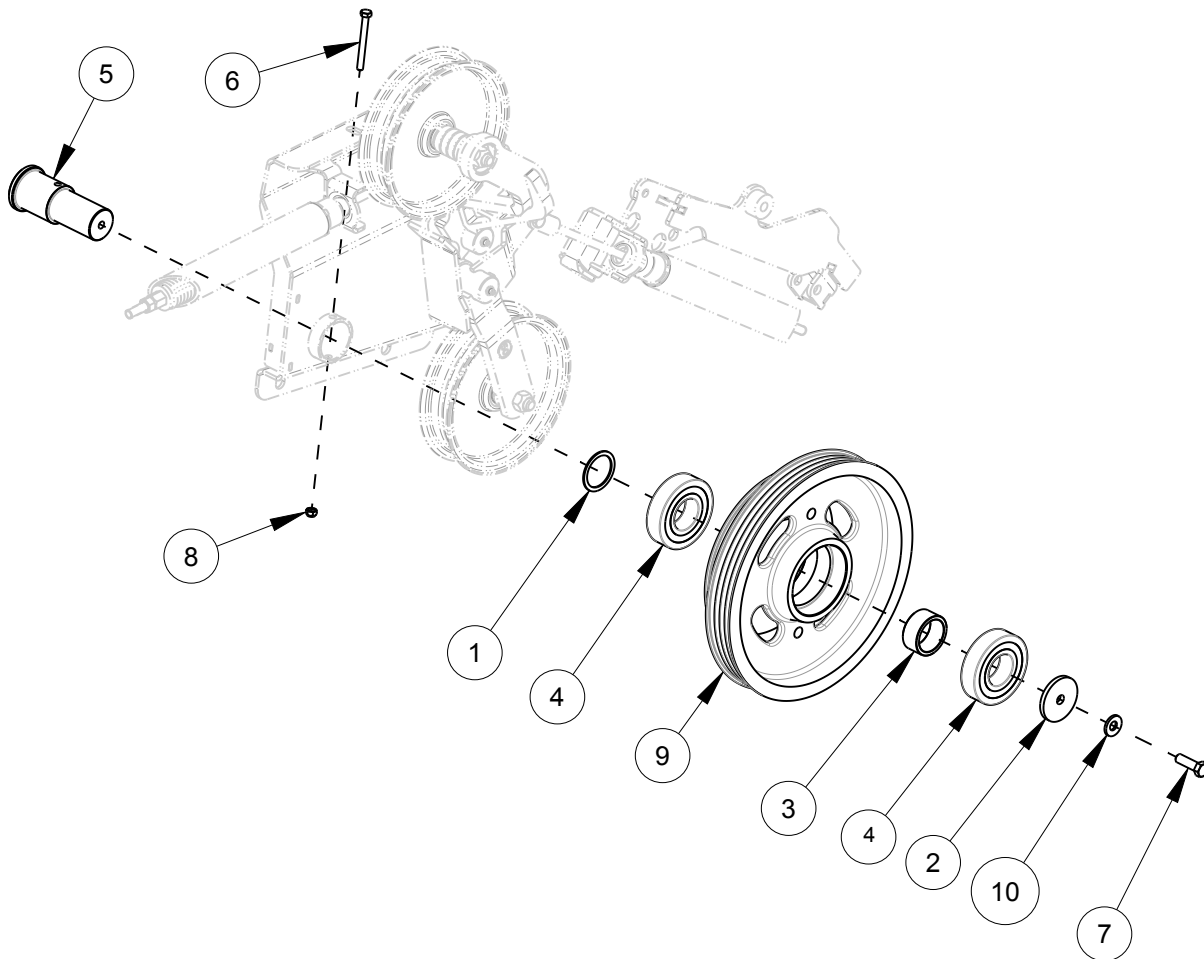
Date: 27DEC2024

Serial No Range From:  
SCFA0001

Serial No Range To:  
PRESENT



FRONT OF COMBINE



SC006-08

Indicate implement serial number with any parts order

# Jackshaft SCU Sheave

**Date:**27DEC2024      **Serial No Range From:** SCFA0001      **Serial No Range To:** PRESENT

ITEM NO.	PART NO.	DESCRIPTION	QTY	NOTE
1	AF135Z	SPACER SHAFT IDLER PULLEY YZD	1	
2	AF205Z	WASHER .5120D x 2.51D x .25 - YZD	1	
3	SC224Z	SPACER 461D 25L YZD	1	
4	87624213	BEARING, 45mm ID	2	
5	AF129-01	SHAFT JACKSHAFT IDEAL SCU	1	
6	BIIM-0880	BOLT HEX M8X80 C8.8 YZD Iso4014	1	
7	BIIM-1240	BOLT HEX M12X40 C8.8 YZD Iso4014	1	
8	N42M-08	NUT LOCK STL M8 C10 YZD DIN980V	1	
9	RPI338	SHEAVE 4M J/S SCU IDEAL	1	
10	W31M-12	WASHER SPRING M12	1	

SC006-08

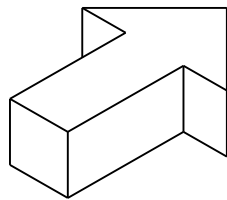
Indicate implement serial number with any parts order



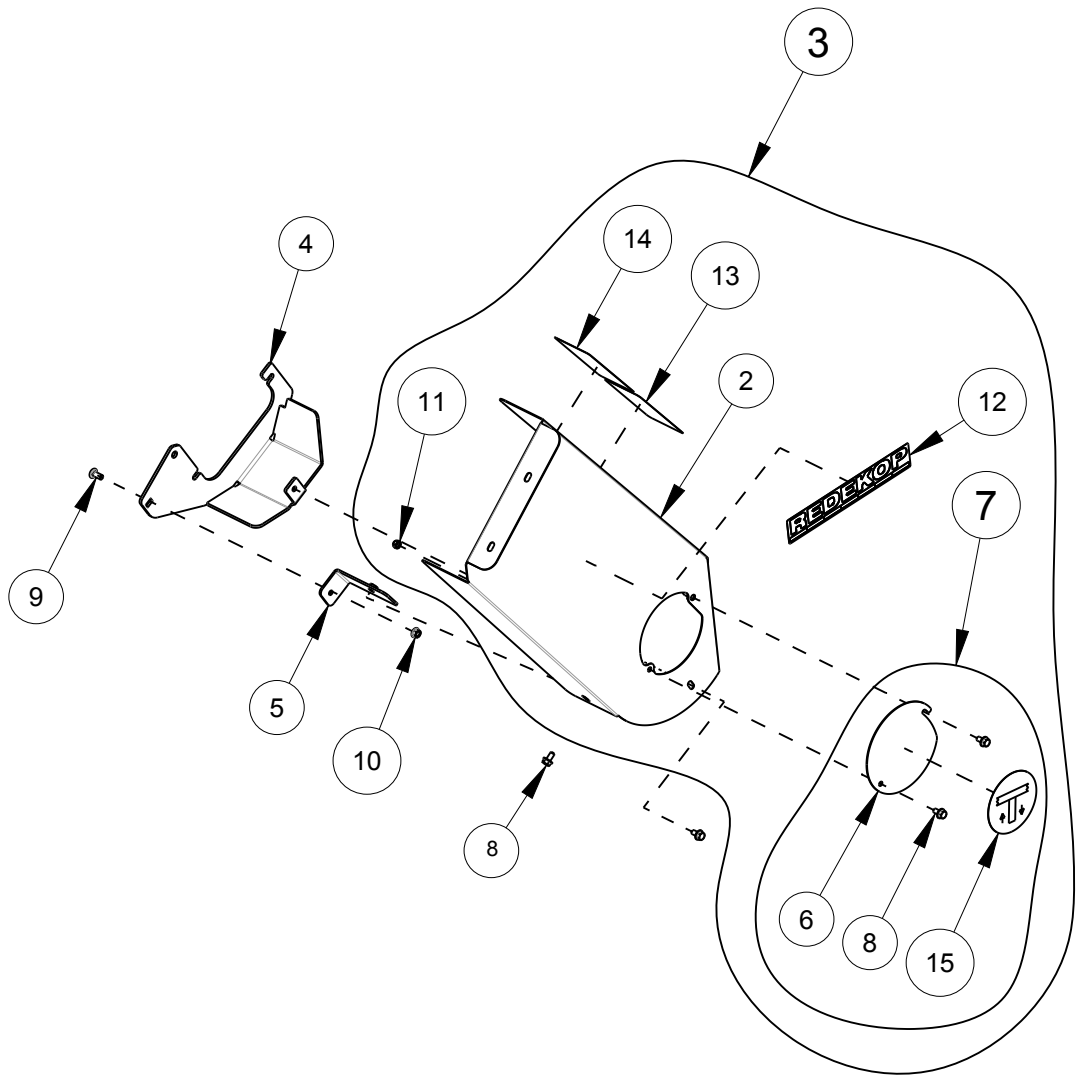
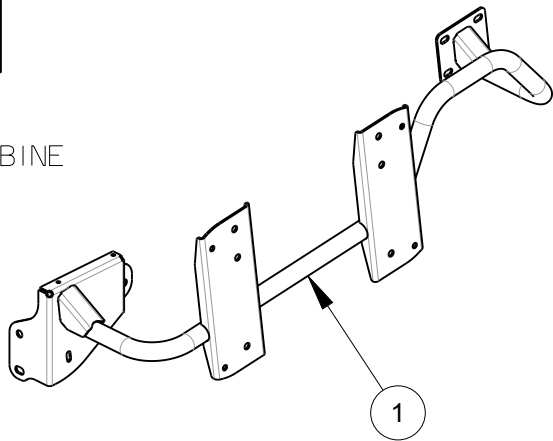
Date:27DEC2024

Serial No Range From:  
SCFA0001

Serial No Range To:  
PRESENT



FRONT OF COMBINE



SC006-08

Indicate implement serial number with any parts order

# Ladder Mount and SCU Shield

**Date:**27DEC2024      **Serial No Range From:** SCFA0001      **Serial No Range To:** PRESENT

ITEM NO.	PART NO.	DESCRIPTION	QTY	NOTE
1	AF165C	LADDER MNT IDEAL - CHARCOAL	1	
2	AF194C	FENDT SCU SHIELD - CHARCOAL	1	NSS - AF194CA
3	AF194CA	DRIVE SHIELD ASSEMBLY - CHARCOAL	1	
4	AF198C	GUARD BOTTOM SCU - CHARCOAL	1	
5	AF199C	BRACKET SUPPORT LOWER SCU FENDT - CHARCOAL	1	
6	CD735C	COVER SCU CHIELD - CHARCOAL	1	NSS - CD735CA
7	CD735CA	COVER SCU DRIVE W/ DECALS - CHARCOAL	1	
8	B21M-0816	BOLT FLG M8X16 C8.8 YZD Iso8102	4	
9	B31M-0820	BOLT RH M8x20 C8.8 YZD ISO8678 Short Neck	1	
10	N21M-08	NUT FLG M8 C8 YZD Iso4161	1	
11	N42M-08	NUT LOCK STL M8 C10 YZD DIN980V	1	
12	RP240	DECAL REDEKOP 12" X 2"	1	
13	RP873	DECAL EU SAFETY CHECK SERVICE	1	
14	RP874	DECAL SAFETY BELT KEEP HANDS OUT	1	
15	RPI036	DECAL SCU DRIVE ENGAGEMENT	1	

NSS - NOT SERVICED SEPARATELY

SC006-08

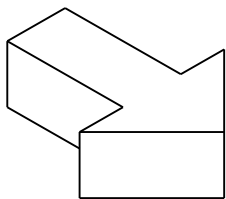
Indicate implement serial number with any parts order

**REDEKOP**<sup>TM</sup>

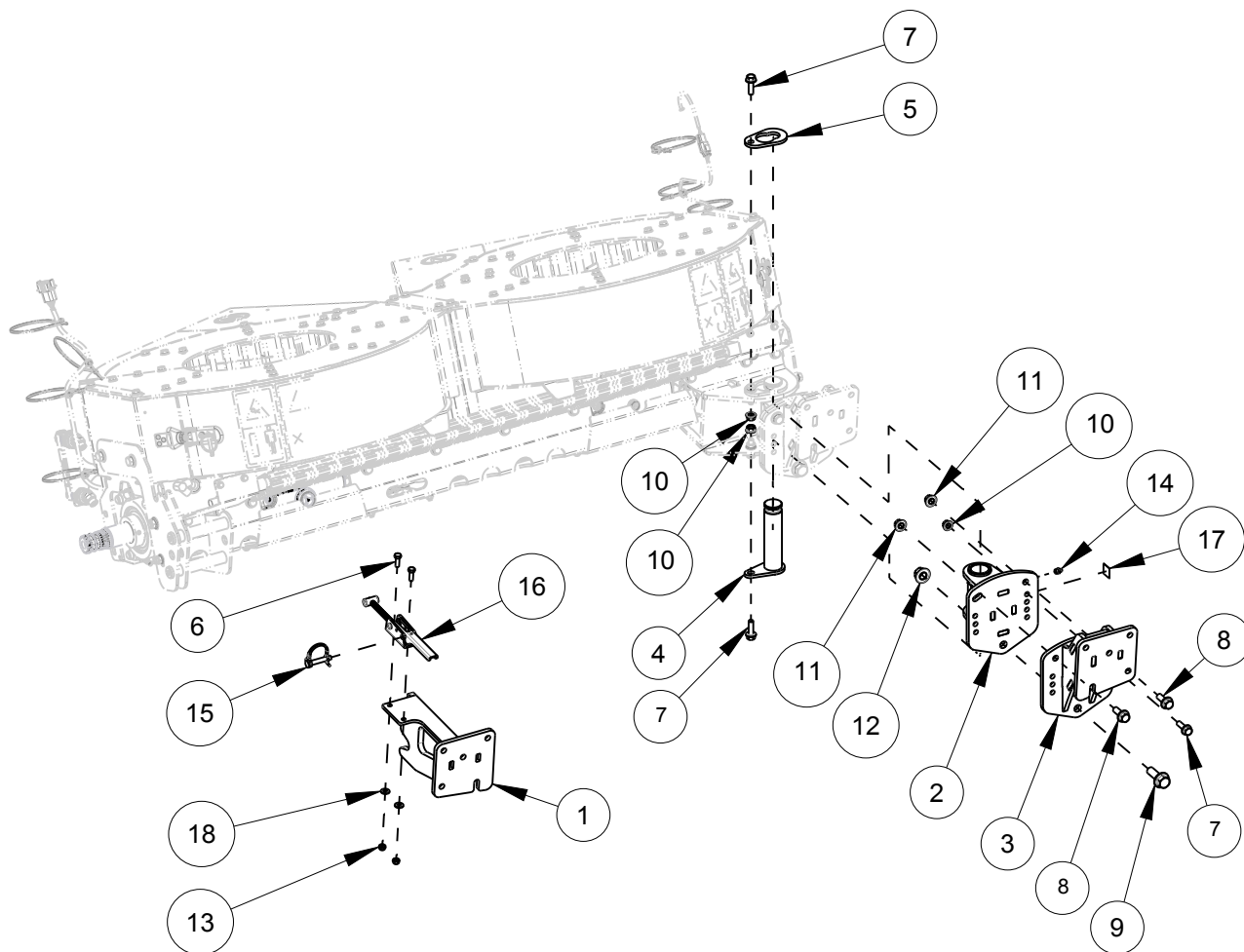
Date: 27DEC2024

Serial No Range From:  
SCFA0001

Serial No Range To:  
PRESENT



FRONT OF COMBINE



SC006-08

Indicate implement serial number with any parts order

# SCU Swivel Mounts MY20

**Date:**27DEC2024 **Serial No Range From:** SCFA0001 **Serial No Range To:** PRESENT

ITEM NO.	PART NO.	DESCRIPTION	QTY	NOTE
1	AF116C	BRACKET SCU SUPPORT - CHARCOAL	1	
2	AF204C	MOUNT LOWER SCU - CHARCOAL	1	
3	AF206C	MOUNT UPPER SCU - CHARCOAL	1	
4	AF208Z	PIVOT PIN MOUNT SCU - YZD	1	
5	AF211Z	PLATE RETAINER PIN SCU - YZD	1	
6	BI1M-0825	BOLT HEX M8X25 C8.8 YZD Iso4014	2	
7	B21M-1035	BOLT FLG M10X35 C8.8 YZD Iso8102	3	
8	B21M-1235	BOLT FLG M12X35 C8.8 YZD Iso8102	2	
9	B21M-1650	BOLT FLG M16X50 C8.8 YZD Iso8102	1	
10	N21M-10	NUT FLG M10 C8 YZD Iso4161	3	
11	N21M-12	NUT FLG M12 C8 YZD Iso4161	2	
12	N21M-16	NUT FLG M16 C8 YZD Iso4161	1	
13	N42M-08	NUT LOCK STL M8 C10 YZD DIN980V	2	
14	RPI118	ZERK GREASE STR M10-1.5	1	
15	RPI277	PIN 3/8" x 1 3/8" UL WIRELOCK	1	
16	RPI299	ADJUSTABLE GRIP LATCH 4400lbs	1	
17	RPI461	DECAL GREASE ANNUAL	1	
18	WI1M-08	WASHER FLAT M8 x 18.8 x 2.3 YZD	2	

SC006-08

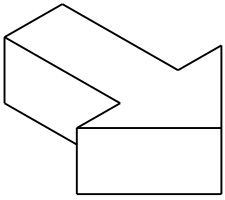
Indicate implement serial number with any parts order

**REDEKOP**<sup>TM</sup>

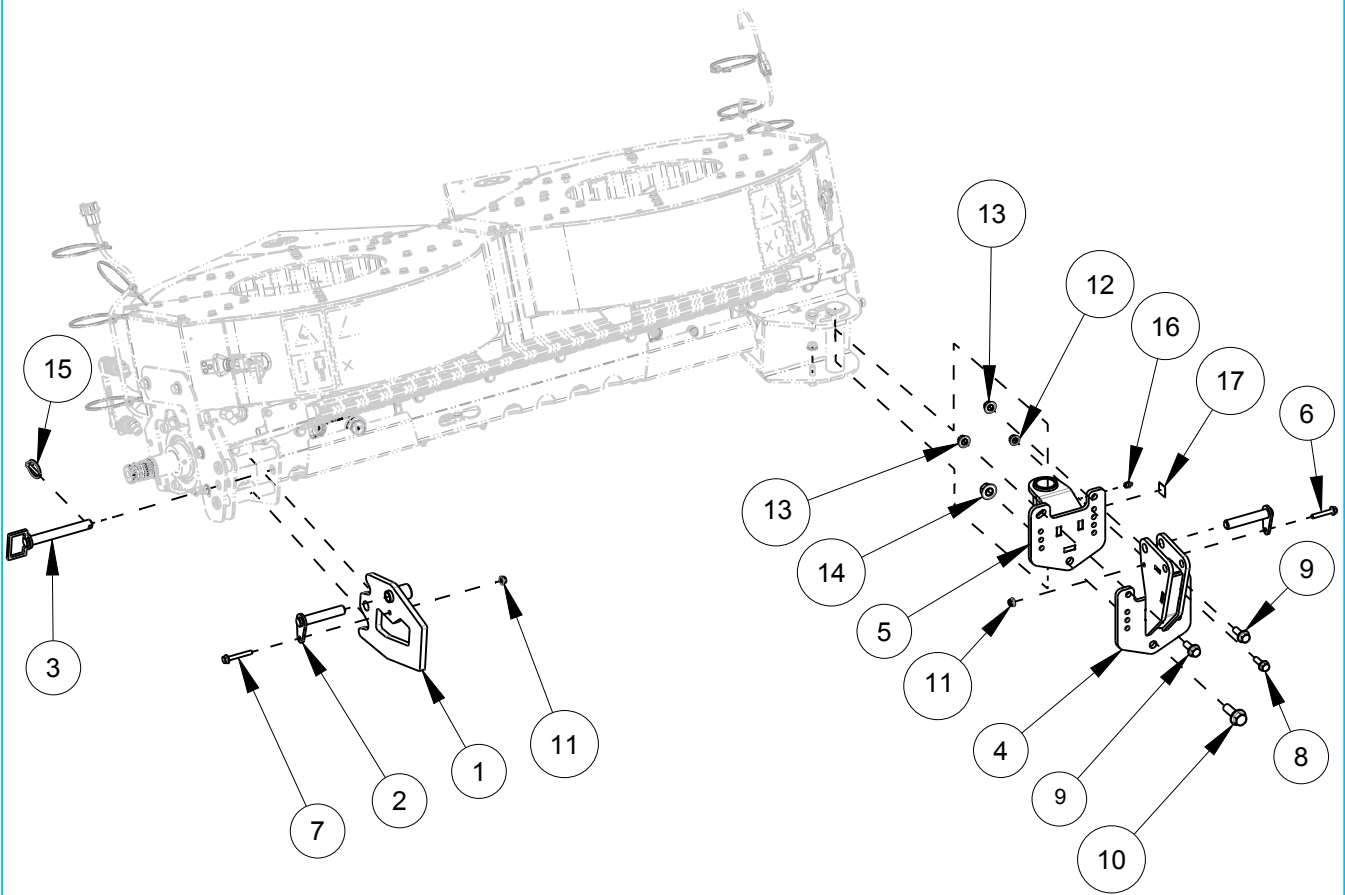
Date: 27DEC2024

Serial No Range From:  
SCFA0001

Serial No Range To:  
PRESENT



FRONT OF COMBINE



SC006-08

Indicate implement serial number with any parts order

# SCU Swivel Mounts MY18 & MY19

Date:27DEC2024		Serial No Range From: SCFA0001	Serial No Range To: PRESENT	
ITEM NO.	PART NO.	DESCRIPTION	QTY	NOTE
1	AF219C	SCU LATCH PLATE WELD - CHARCOAL	1	
2	AF220Z	SCU MOUNT PIN - YZD	2	
3	AF221Z	SCU LATCH PIN WELD - YZD	1	
4	AF222C	SCU UPPER MOUNT WELD - CHARCOAL	1	
5	AF223C	SCU LOWER MOUNT WELD - CHARCOAL	1	
6	B21M-0850	BOLT FLG M8X50 C8.8 YZD Iso8102	1	
7	B21M-0860	BOLT FLG M8X60 C8.8 YZD Iso8102	1	
8	B21M-1035	BOLT FLG M10X35 C8.8 YZD Iso8102	1	
9	B21M-1235	BOLT FLG M12X35 C8.8 YZD Iso8102	2	
10	B21M-1650	BOLT FLG M16X50 C8.8 YZD Iso8102	1	
11	N21M-08	NUT FLG M8 C8 YZD Iso4161	2	
12	N21M-10	NUT FLG M10 C8 YZD Iso4161	1	
13	N21M-12	NUT FLG M12 C8 YZD Iso4161	2	
14	N21M-16	NUT FLG M16 C8 YZD Iso4161	1	
15	P41-0420	PIN LYNCH .25 X 1.25 YZD	1	
16	RP1118	ZERK GREASE STR M10-1.5	1	
17	RP1461	DECAL GREASE ANNUAL	1	
	AF224K	KIT, AGCO SCU MY 18/19 MOUNTING	1	INCLUDES ITEM NO. 1 TO 17

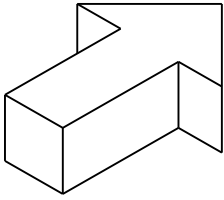
SC006-08

Indicate implement serial number with any parts order

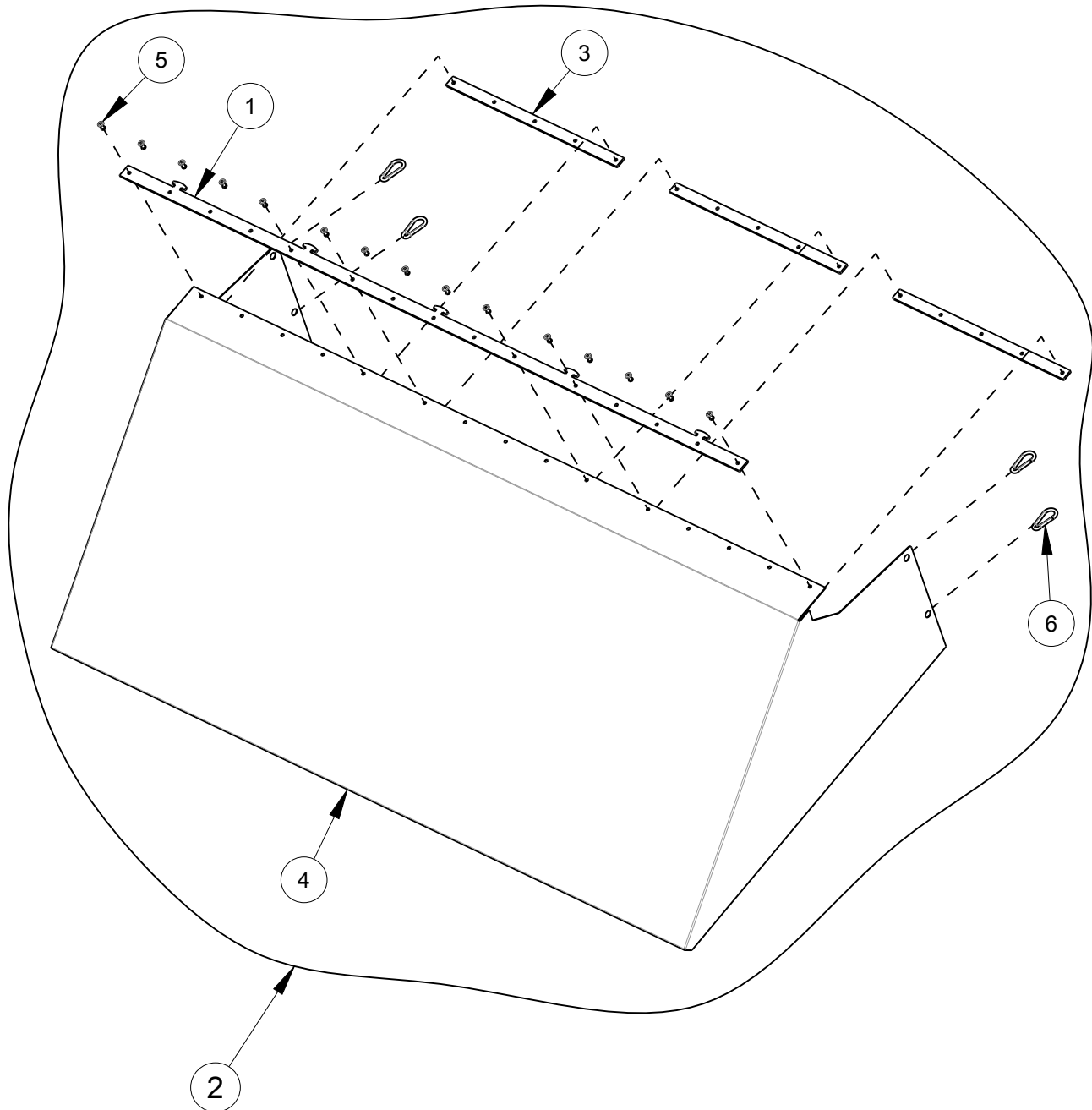
Date: 27DEC2024

Serial No Range From:  
SCFA0001

Serial No Range To:  
PRESENT



FRONT OF COMBINE



SC006-08

Indicate implement serial number with any parts order

# Windrow Canvas Assembly

**Date:**27DEC2024      **Serial No Range From:** SCFA0001      **Serial No Range To:** PRESENT

ITEM NO.	PART NO.	DESCRIPTION	QTY	NOTE
1	AF225C	CANVAS TOP ATTACH PLATE - CHARCOAL	1	
2	AF225CA	WINDROW CANVAS CHARCOAL ASSEMBLY	1	
3	AF227C	CANVAS ATTACHMENT PLATE - CHARCOAL	3	
4	AF226-01	WINDROW CANVAS	1	
5	RO3-08	RIVET INCH GENERIC	15	
6	RPI466	CARABINER - 3/16"W x 1-5/8"L	4	

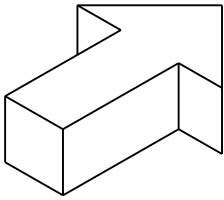
SC006-08

Indicate implement serial number with any parts order

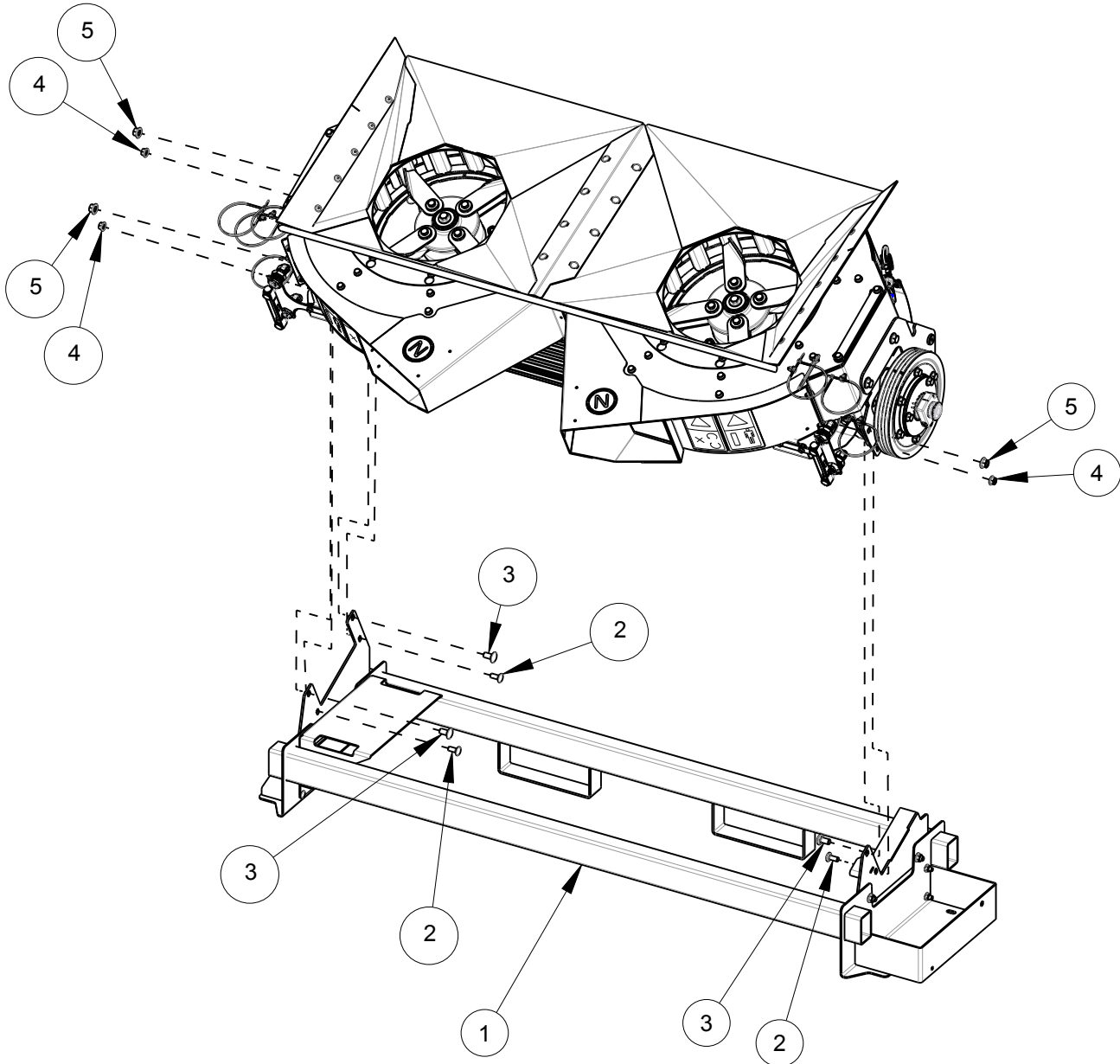
Date: 27DEC2024

Serial No Range From:  
SCFA0001

Serial No Range To:  
PRESENT



FRONT OF COMBINE



SC006-08

Indicate implement serial number with any parts order

# SCU Service Frame

**Date:**27DEC2024      **Serial No Range From:** SCFA0001      **Serial No Range To:** PRESENT

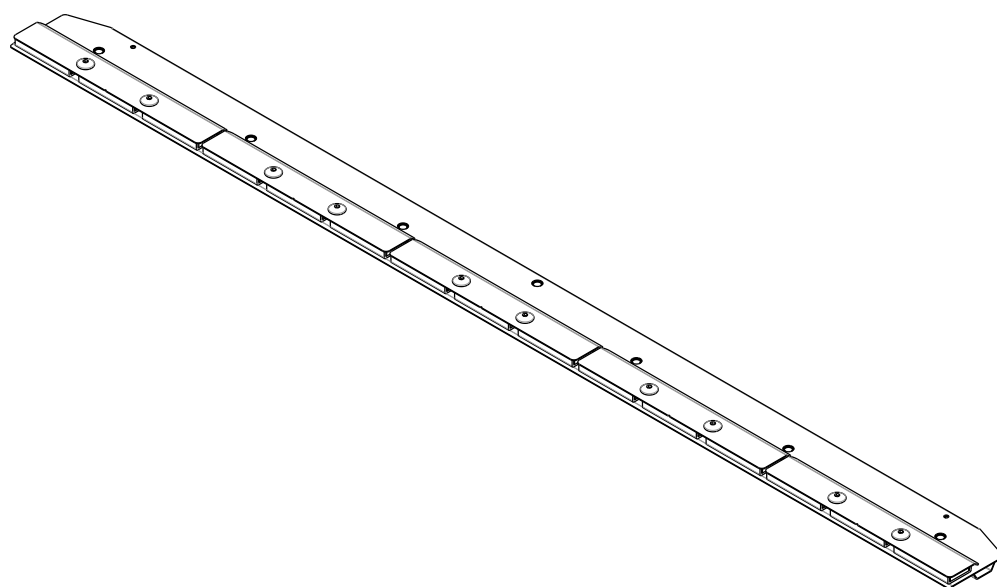
ITEM NO.	PART NO.	DESCRIPTION	QTY	NOTE
1	SC754A	FENDT IDEAL SCU SERVICE FRAME	1	
2	B3IM-1025	BOLT RH M10X25 C8.8 YZD ISO8678 Short Neck	4	
3	B3IM-1225	BOLT RH M12X25 C8.8 YZD ISO8678 Short Neck	4	
4	N2IM-10	NUT FLG M10 C8 YZD Iso4161	11	
5	N2IM-12	NUT FLG M12 C8 YZD Iso4161	8	

SC006-08

Indicate implement serial number with any parts order



SECTION B

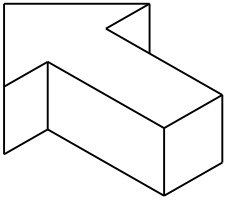


850-503    MAGNET KIT FENDT IDEAL

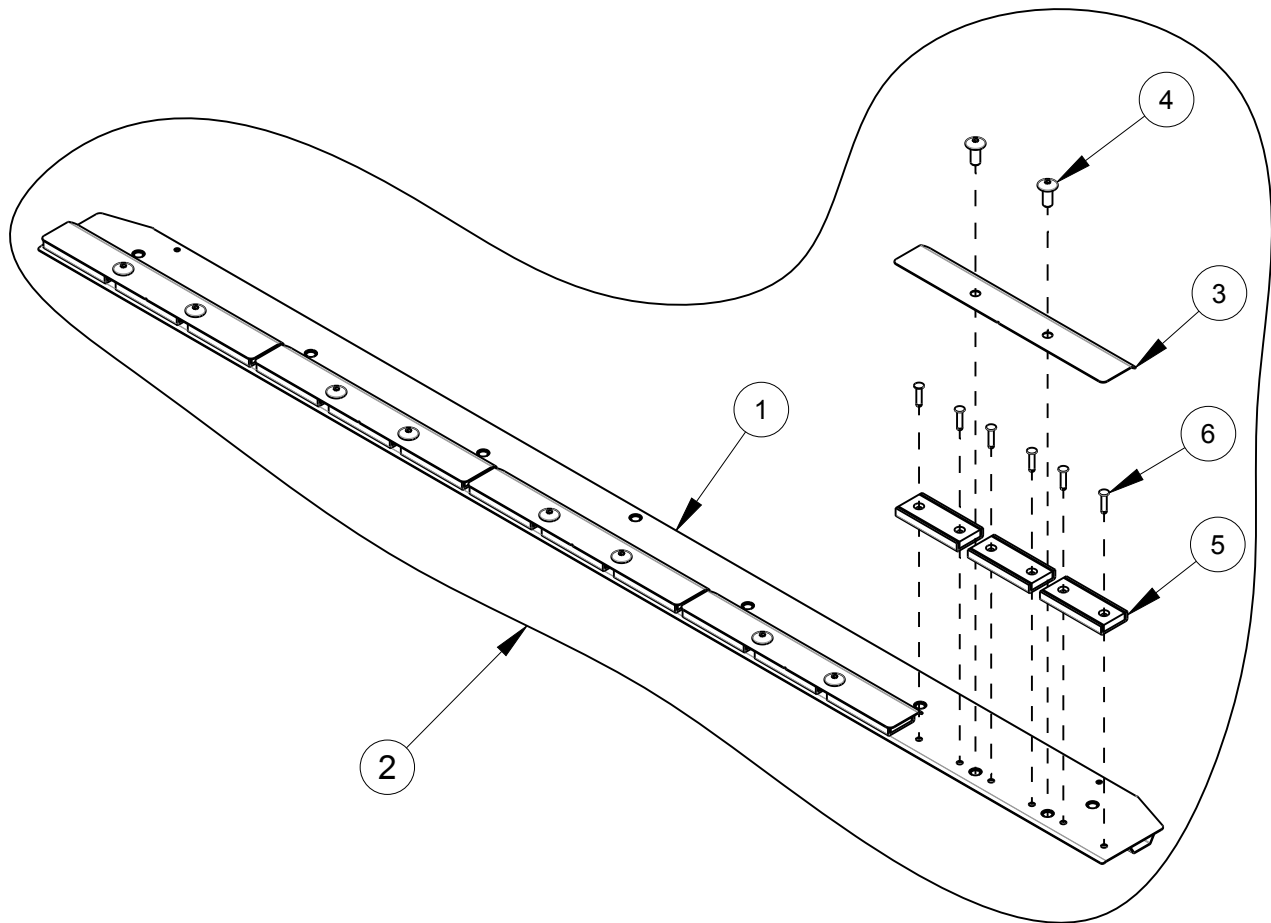
Date:23JUN2023

Serial No Range From:  
SCFA0001

Serial No Range To:  
PRESENT



FRONT OF COMBINE



AF008-01

Indicate implement serial number with any parts order

# 850-503 Kit Magnet

Date:23JUN2023		Serial No Range From: SCFA0001	Serial No Range To: PRESENT	
ITEM NO.	PART NO.	DESCRIPTION	QTY	NOTE
1	AF217C	FENDT MAGNET SIEVE EXT - CHARCOAL	1	
2	AF217CA	ASSY, FENDT MAGNET SIEVE EXT - CHARCOAL	1	
3	AF218-01	COVER FENDT MAGNET TRAY - SS	5	
4	B38M-0820	BOLT RH ALLEN M8x20 C8.8 YZD DIN11252 No Neck	10	
5	RPI108	MAGNET 1x3.75x0.38"	15	
6	RPI304	18-8 ALUMINUM RIVET 0.188X0.7"	30	

AF008-01

Indicate implement serial number with any parts order

# REDEKOP MANUFACTURING

**1.866.REDEKOP (1.866.733.3567)**

Saskatoon, Saskatchewan Canada S7K 3J7

[info@redkopmfg.com](mailto:info@redkopmfg.com)

[www.redkopmfg.com](http://www.redkopmfg.com)

**REDEKOP**<sup>TM</sup>

For additional and the most up to date Manuals:



EQR002

**REDEKOP**<sup>TM</sup>