

REDEKOP™

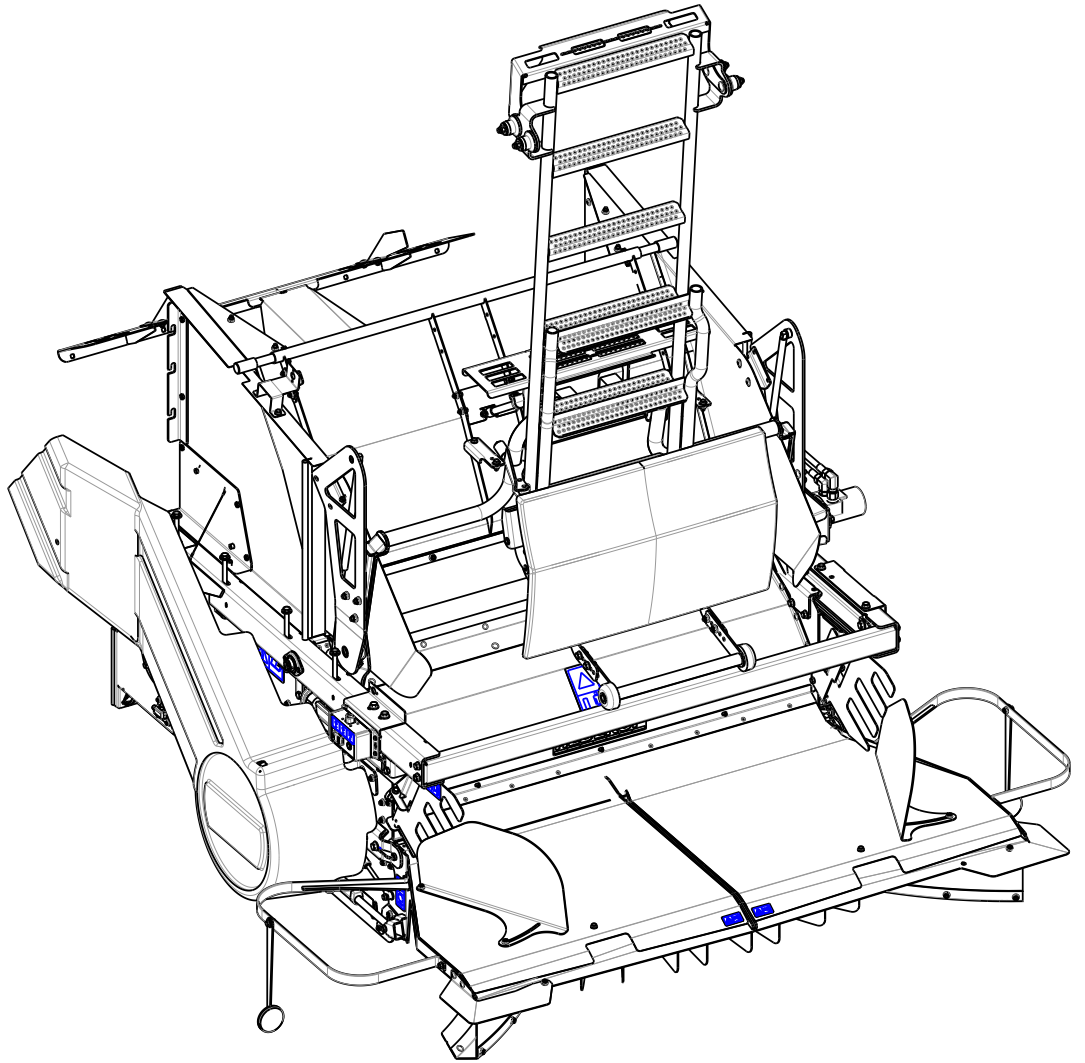
MAV CHOPPER
CASE / AFX

PARTS MANUAL

PRODUCT NUMBER: 220-213W

SERIAL NUMBER RANGE: RMCA0001 - PRESENT

REDEKOP™

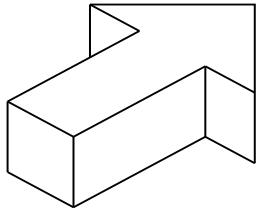


REDEKOP™

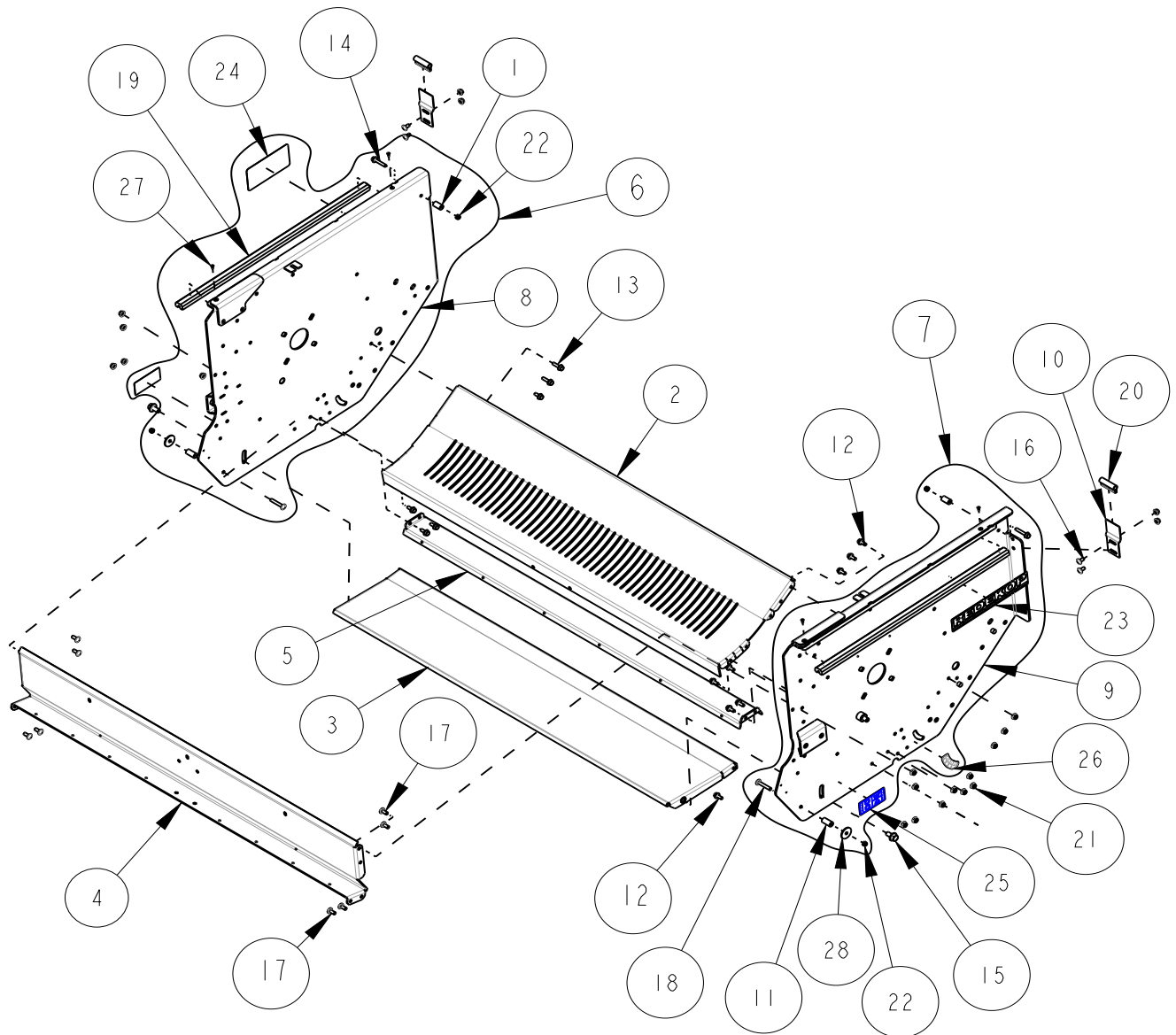
CASE AFX MAV CHOPPER

Table of Contents

	<u>Page</u>
Chopper Housing [RMCA0001 to RMCA0099]	1-1 & 1-2
Chopper Housing [RMCA0100 to PRESENT]	1-3 & 1-4
Rotor, Knifebar, Chaff Door for Chopper w/o SCU	2-1 & 2-2
Chaff Door for Chopper with SCU	3-1 & 3-2
Chopper Rotor [RMCA0001 to RMCA0099]	4-1 & 4-2
Chopper Rotor [RMCA0100 to PRESENT]	4-3 & 4-4
Knifebar	5-1 & 5-2
Hood and Tailboard Seals [RMCA0001 to RMCA0227]	6-1 & 6-2
Hood and Tailboard Seals [RMCA0227 to PRESENT]	6-1 & 6-2
Tailboard, Actuator, and Mounts	7-1 & 7-2
Tailboards	8-1 & 8-2
Vents and Shield [RMCA0001 to RMCA0099]	9-1 & 9-2
Vents and Shield [RMCA0100 to RMCA0227]	9-3 & 9-4
Vents and Shield [RMCA0228 to PRESENT]	9-5 & 9-6
Belts and Sheaves	10-1 & 10-2
Jackshaft Bracket and Mounts	11-1 & 11-2
Jackshaft Sheave and Bearings [JS350 to JS449]	12-1 & 12-2
Jackshaft Sheave and Bearings [JS450 to PRESENT]	13-1 & 13-2
Jackshaft Upper Tensioner	14-1 & 14-2
Jackshaft Lower Tensioner	15-1 & 15-2
Chaff Divider	16-1 & 16-2
Collector Interface [RMCA0001 to RMCA0099]	17-1 & 17-2
Collector Interface [RMCA0100 to PRESENT]	17-3 & 17-4
Straw Door and Ladder Side Panels	18-1 & 18-2
Ladder	19-1 & 19-2
Windrow Hydraulic Hoses and Fittings	20-1 & 20-2
DEF Tank	21-1 & 21-2
Harness [RMCA0001 to RMCA0099]	22-1 & 22-2
Harness [RMCA0100 to PRESENT]	22-3 & 22-4



FRONT OF COMBINE



CS0145-05

Indicate implement serial number with any parts order

CASE AFX MAV Chopper

Page: 1 - 2
Date:25FEB2022

Serial No Range From:
RMCA0001

Serial No Range To:
RMCA0099

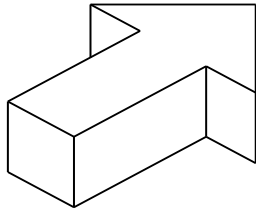
ITEM NO.	PART NO.	DESCRIPTION	QTY	NOTE
1	CA413Z	SPACER LATCH YZD	2	
2	CD621B	FLOOR CHOPPER 55W - BLACK	1	
3	CG424B	FLOOR EXT 55W - BLACK	1	
4	CG426B	CHOPPER RR PANEL 55L - BLACK	1	
5	CG488B	GUARD KBAR 55W - BLACK	1	
6	CH606BAL	SIDEWALL ASSY W SLIDER LT c/w DECALS - BLACK	1	
7	CH606BAR	SIDEWALL ASSY W SLIDER RT c/w DECALS - BLACK	1	
8	CH606BL	SIDEWALL CHOPPER LT - BLACK	1	NSS - CH606BAL
9	CH606BR	SIDEWALL CHOPPER RT - BLACK	1	NSS - CH606BAR
10	CH719B	TAB CHOPPER SLIDE SEAL - BLACK	2	
11	CS972Z	TUBE LIMIT ACTUATOR - YZD	2	
12	B21M-0820	BOLT FLG M8X20 C8.8 YZD Iso8102	14	
13	B21M-0830	BOLT FLG M8X30 C8.8 YZD Iso8102	2	
14	B21M-0845	BOLT FLG M8X45 C8.8 YZD Iso8102	2	
15	B21M-1225	BOLT FLG M12X25 C8.8 YZD Iso8102	2	
16	B31M-0816	BOLT RH M8x16 C8.8 YZD ISO8678 Short Neck	4	
17	B31M-0820	BOLT RH M8x20 C8.8 YZD ISO8678 Short Neck	8	
18	B31M-0850	BOLT RH M8x50 C8.8 YZD ISO8678 Short Neck	2	
19	CH608-01	GUIDE-CHOPPER RAIL	2	
20	CH681-01	SEAL CHOPPER VENT INTERFACE	2	
21	N21M-08	NUT FLG M8 C8 YZD Iso4161	28	
22	N42M-08	NUT LOCK STL M8 C10 YZD DIN980V	4	
23	RP240	DECAL REDEKOP 12" X 2"	1	
24	RP873	DECAL EU SAFETY CHECK SERVICE	1	
25	RP896	DECAL, WINDROW FLOOR ADJUST	2	
26	RP942	DECAL EU KNIFE BAR ADJ	1	
27	S21-0808	SCREW WOOD #8 x .5 ROBERTSON	4	
28	W41M-08	WASHER FLAT M8 x 38 x 2.5 YZD	2	

NSS = NOT SERVICED SEPARATELY

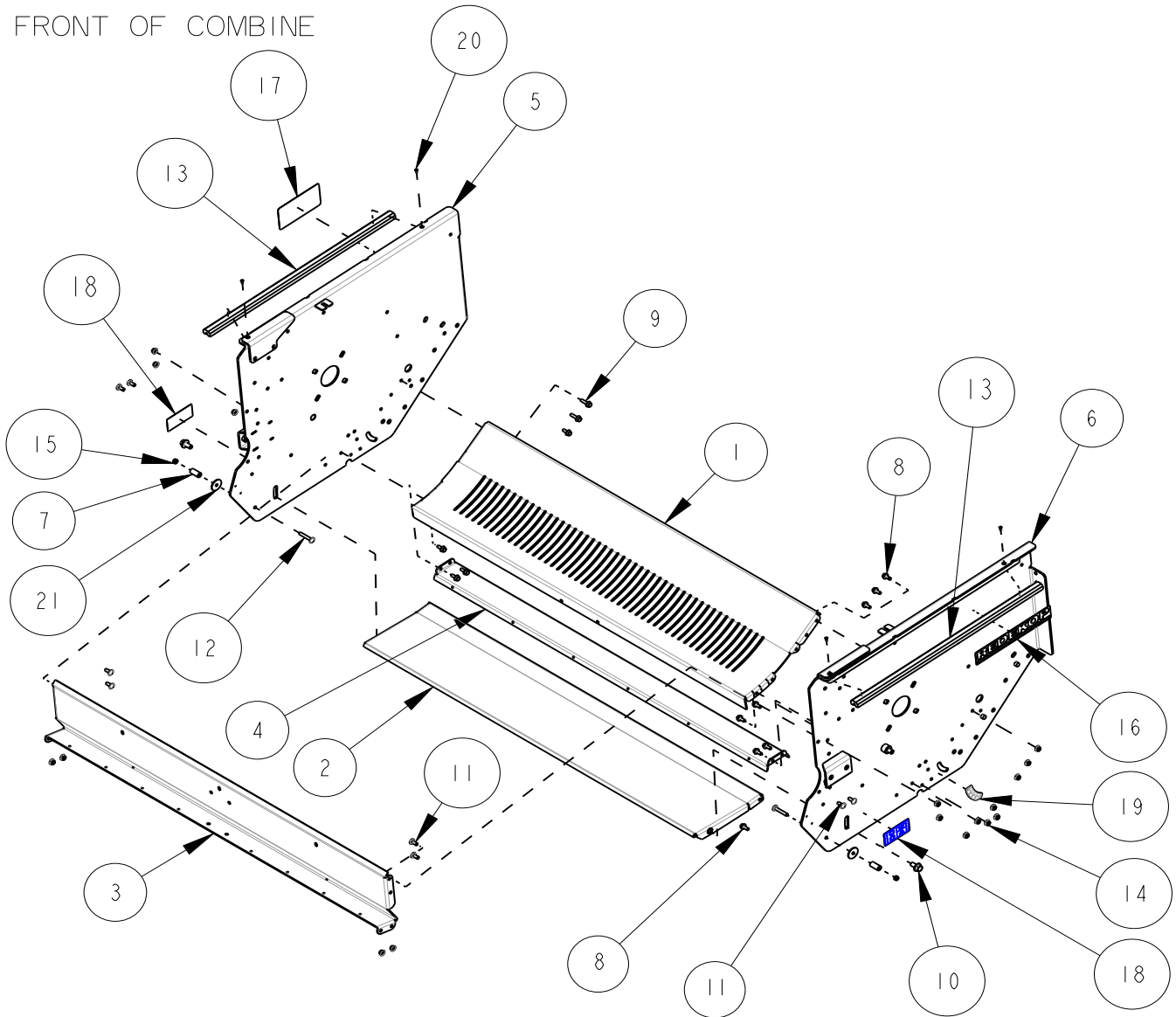
CS0145-05

Indicate implement serial number with any parts order





FRONT OF COMBINE



CS0145-05

Indicate implement serial number with any parts order

CASE AFX MAV Chopper

Page: 1 - 4
Date: 22MAR2022

Serial No Range From:
RMCA0100

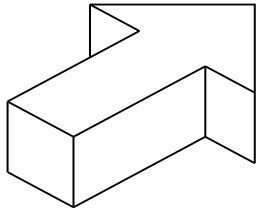
Serial No Range To:
PRESENT

ITEM NO.	PART NO.	DESCRIPTION	QTY	NOTE
1	CD621B	FLOOR CHOPPER 55W - BLACK	1	
2	CG424B	FLOOR EXT 55W - BLACK	1	
3	CG426B	CHOPPER RR PANEL 55L - BLACK	1	
4	CG488B	GUARD KBAR 55W - BLACK	1	
5	CH606BL	SIDEWALL CHOPPER LT - BLACK	1	
6	CH606BR	SIDEWALL CHOPPER RT - BLACK	1	
7	CS972Z	TUBE LIMIT ACTUATOR - YZD	2	
8	B21M-0820	BOLT FLG M8X20 C8.8 YZD Iso8102	14	
9	B21M-0830	BOLT FLG M8X30 C8.8 YZD Iso8102	2	
10	B21M-1225	BOLT FLG M12X25 C8.8 YZD Iso8102	2	
11	B31M-0820	BOLT RH M8x20 C8.8 YZD ISO8678 Short Neck	8	
12	B31M-0850	BOLT RH M8x50 C8.8 YZD ISO8678 Short Neck	2	
13	CH608-01	GUIDE-CHOPPER RAIL	2	
14	N21M-08	NUT FLG M8 C8 YZD Iso4161	24	
15	N42M-08	NUT LOCK STL M8 C10 YZD DIN980V	2	
16	RP240	DECAL REDEKOP 12" X 2"	1	
17	RP873	DECAL EU SAFETY CHECK SERVICE	1	
18	RP896	DECAL, WINDROW FLOOR ADJUST	2	
19	RP942	DECAL EU KNIFE BAR ADJ	1	
20	S21-0808	SCREW WOOD #8 x .5 ROBERTSON	4	
21	W41M-08	WASHER FLAT M8 x 38 x 2.5 YZD	2	

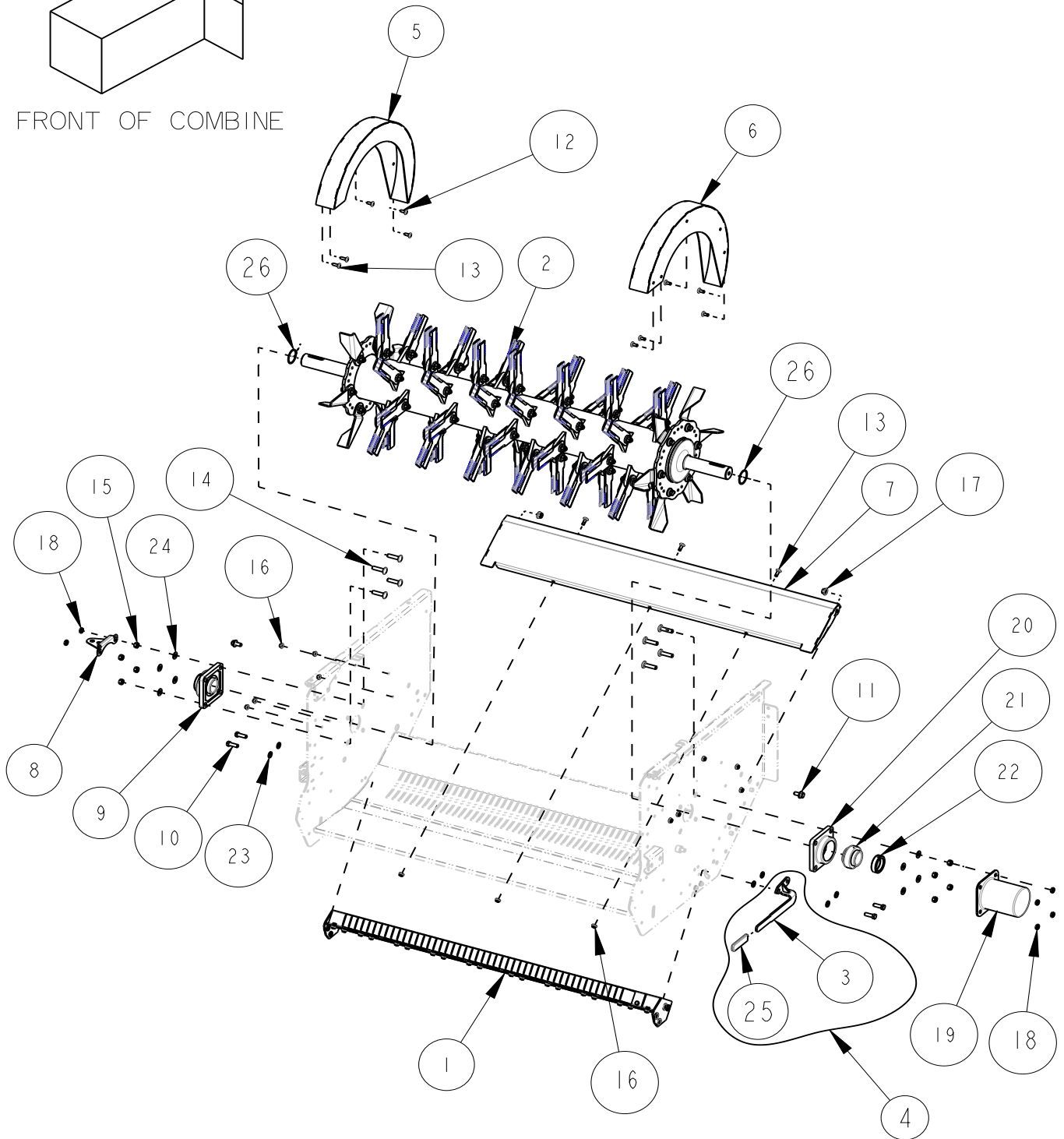
CS0145-05

Indicate implement serial number with any parts order





FRONT OF COMBINE



CS0145-05

Indicate implement serial number with any parts order

CASE AFX MAV Chopper

Page: 2 - 2
Date:23JUN2022

Serial No Range From:
RMCA0001

Serial No Range To:
PRESENT

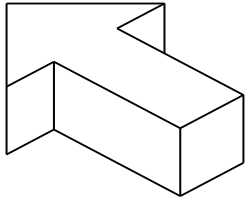
ITEM NO.	PART NO.	DESCRIPTION	QTY	NOTE
1	CG352BA	KNIFE BAR ASSY MAV 55W NO PADDLE - BLACK	1	SEE PAGES 5-1 & 5-2
2	CG851BA	ROTOR MAV FG 55W 8R W SPR SCU DRV - BLACK	1	SEE PAGES 4-1, 4-2, 4-3, & 4-4
3	CH638B	HANDLE POINTED - BLACK	1	NSS - CH638BA
4	CH638BA	KBAR HNDL POINTED - BLACK	1	INCLUDES CH638B, RP309
5	CH685BL	FAN SHROUD LT - BLACK	1	
6	CH685BR	FAN SHROUD RT - BLACK	1	
7	CS1174B	INLET FLOOR W/O SCU AFX MAV - BLACK	1	
8	CS833Z	MOUNT PLATE AFX SPEED SENSOR - YZD	1	
9	RP295A	BEARING ASSY 50mm ID ECL 4B CAST FLG	2	INCLUDES RP238, RP295, RP296
10	B11M-1235	BOLT HEX M12X35 C8.8 YZD Iso4014	4	
11	B21M-1225	BOLT FLG M12X25 C8.8 YZD Iso8102	2	
12	B31M-0820	BOLT RH M8x20 C8.8 YZD ISO8678 Short Neck	8	
13	B31M-0825	BOLT RH M8x25 C8.8 YZD ISO8678 Short Neck	5	
14	B31M-1250	BOLT RH M12X50 C8.8 YZD ISO8678 Short Neck	8	
15	N11M-12	NUT HEX M12 C8 YZD ISO4032	8	
16	N21M-08	NUT FLG M8 C8 YZD Iso4161	37	
17	N21M-12	NUT FLG M12 C8 YZD Iso4161	2	
18	N31M-12	NUT JAM M12 C8 YZD Iso4035	6	
19	RPI242	CAP BEARING ROTOR END	1	
20	RP238	BEARING FLANGE 4B F210	2	NSS - RP295A
21	RP295	BEARING BALL SPH 50mm	2	NSS - RP295A
22	RP296	LOCK COLLAR ECL 50mm ID	2	NSS - RP295A
23	W11M-12	WASHER FLAT M12 x 23.5 x 2.4 YZD	8	
24	W31M-12	WASHER, BELLEVILLE	8	
25	RP309	GRIP	1	NSS - CH638BA
26	CG715Z	WASHER ROTOR SHIM 50.8 ID 16ga YZD	2	ORDER IN PAIRS

NSS = NOT SERVICED SEPARATELY

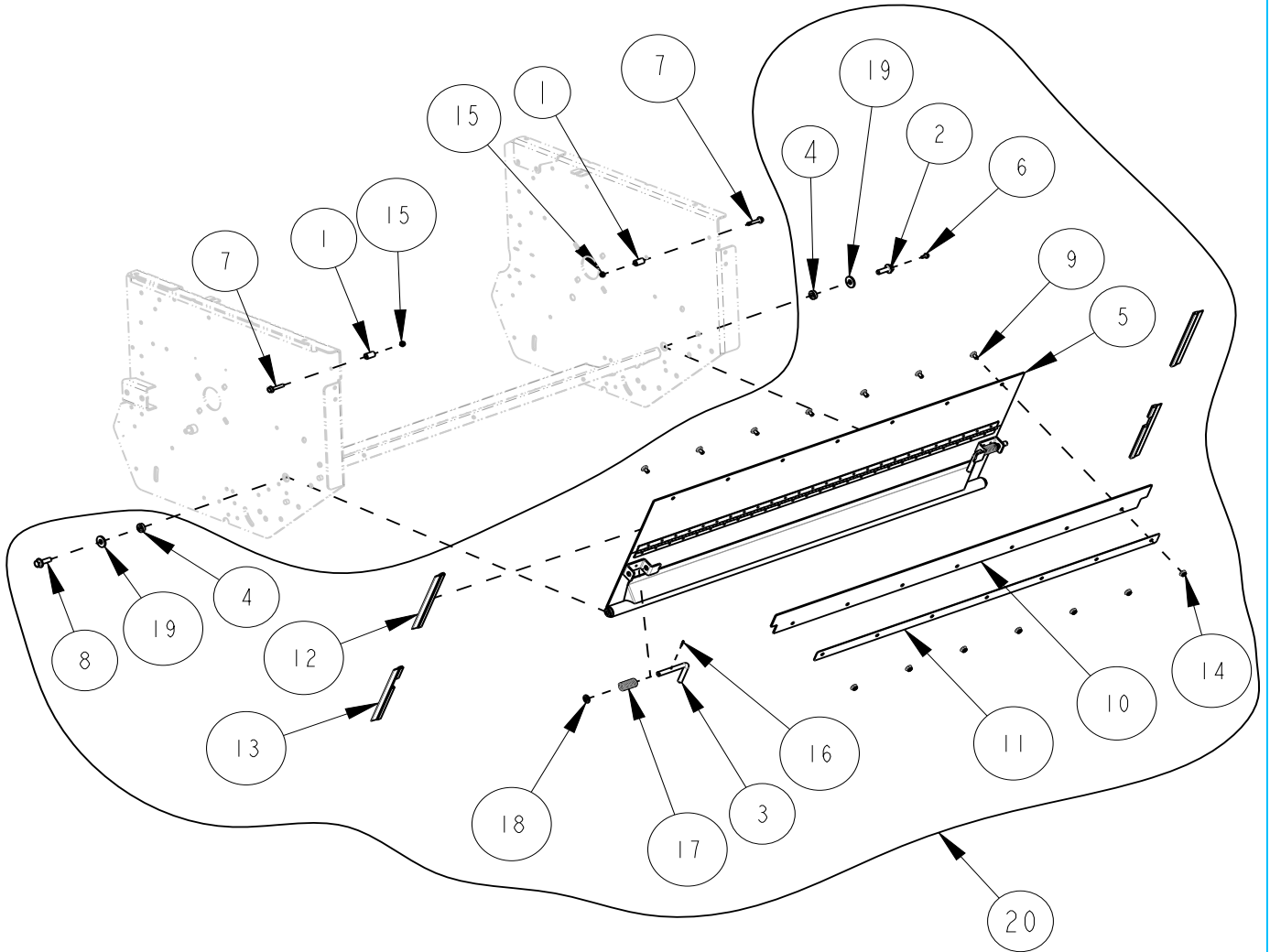
CS0145-05

Indicate implement serial number with any parts order





FRONT OF COMBINE



CS1146BA
FOR CHOPPER WITH SCU ONLY

Indicate implement serial number with any parts order

CASE AFX MAV Chopper

Page: 3 - 2
Date: 23JUN2022

Serial No Range From:
RMCA0001

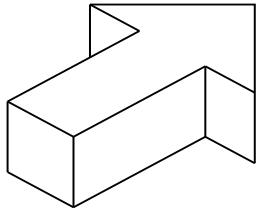
Serial No Range To:
PRESENT

ITEM NO.	PART NO.	DESCRIPTION	QTY	NOTE
1	CA413Z	SPACER LATCH YZD	2	
2	CD749	BOLT, DOOR PIVOT CHAFF DOOR	1	
3	CD753Z	PIN, CHAFF DOOR - YZD	2	
4	CH689Z	SPACER 0.5 ID X 1.0 OD X 0.25 TK YZD	2	
5	CS1146B	DOOR CHAFF CNH NARROW - BLACK	1	NSS - CS1146BA
6	B21M-0616	BOLT FLG M6X16 C8.8 YZD Iso8102	1	
7	B21M-0845	BOLT FLG M8X45 C8.8 YZD Iso8102	2	
8	B21M-1240	BOLT FLG M12X40 C8.8 YZD Iso8102	1	
9	B31M-0816	BOLT RH M8x16 C8.8 YZD ISO8678 Short Neck	7	
10	CS1147-01	BELT UPPER CHAFF DOOR AFX	1	
11	CS1148-01	STRAP UPPER CHAFF DOOR	1	
12	CS1164-01	SEAL WIPER UPPER CHAFF DOOR	2	
13	CS1165-01	SEAL WIPER BTM CHAFF DOOR W/ CUT OUT	2	
14	N21M-08	NUT FLG M8 C8 YZD Iso4161	7	
15	N42M-08	NUT LOCK STL M8 C10 YZD DIN980V	2	
16	PI1-0212	PIN ROL .125 x .75 YZD	2	
17	RP971	SPRING, COMPRESSION	2	
18	WI1M-12	WASHER FLAT M12 x 23.5 x 2.4 YZD	2	
19	WI2M-12	WASHER FLAT M12 x 34 x 3.5 YZD	2	
20	CS1146BA	DOOR CHAFF AFX ASSEMBLY - BLACK	1	INCLUDES ITEM NO. 2,3,4,5,6,8,9,10,11,12,13,14,16,17,18,19

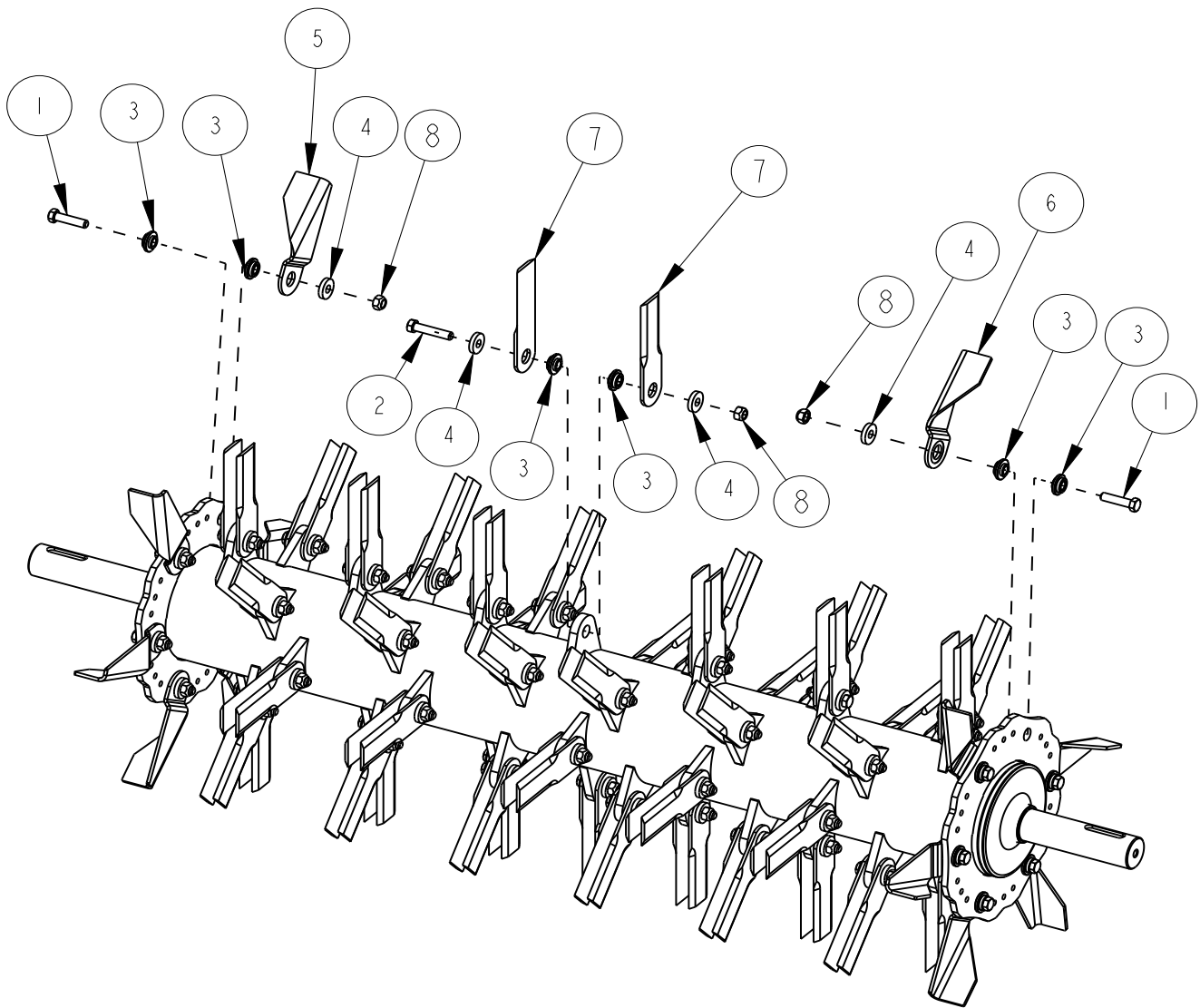
NSS = NOT SERVICED SEPARATELY

CS0145-05

Indicate implement serial number with any parts order



FRONT OF COMBINE



CG851BA

CS0145-05

Indicate implement serial number with any parts order

CASE AFX MAV Chopper

Page: 4 - 2
Date: 22MAR2022

Serial No Range From:
RMCA0001

Serial No Range To:
RMCA0099

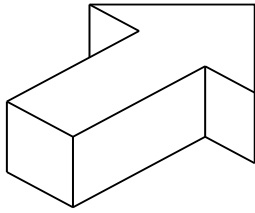
ITEM NO.	PART NO.	DESCRIPTION	QTY	NOTE
1	BI2M-1250	BOLT HEX M12X50 C10.9 YZD Iso4014	12	
2	BI2M-1260	BOLT HEX M12X60 C10.9 YZD Iso4014	48	
3	HA553	BUSHING, MAV STD	120	NSS - BK553
4	HA555	WASHER, ROTOR 1.25 O.D.	108	NSS - BK555
5	HA570L	BLADE FAN 2 INCH LT	6	NSS - BK570L
6	HA570R	BLADE FAN 2 INCH RT	6	NSS - BK570R
7	HA650C	BLADE STR MAV CARBIDE	96	NSS - HA655C
8	N42M-12	NUT LOCK STL M12 C10 YZD	60	
	BK570	BLADE KIT FAN MAV 2in (6-LT 6-RT)	1	INCLUDES 6x HA570L, 6x HA570R, 12x N42M-12
	BK570L	BLADE KIT FAN MAV 2in (6-LT)	1	INCLUDES 6x HA570L, 6x N42M-12
	BK570R	BLADE KIT FAN MAV 2in (6-RT)	1	INCLUDES 6x HA570R, 6x N42M-12
	BK650	BLADE KIT HA650 (8)	12	NSS - BK655C
	BK553	KIT BUSHING HA553 (20)	6	
	BK555	KIT WASHER HA555 (20)	6	

NSS = NOT SERVICED SEPARATELY

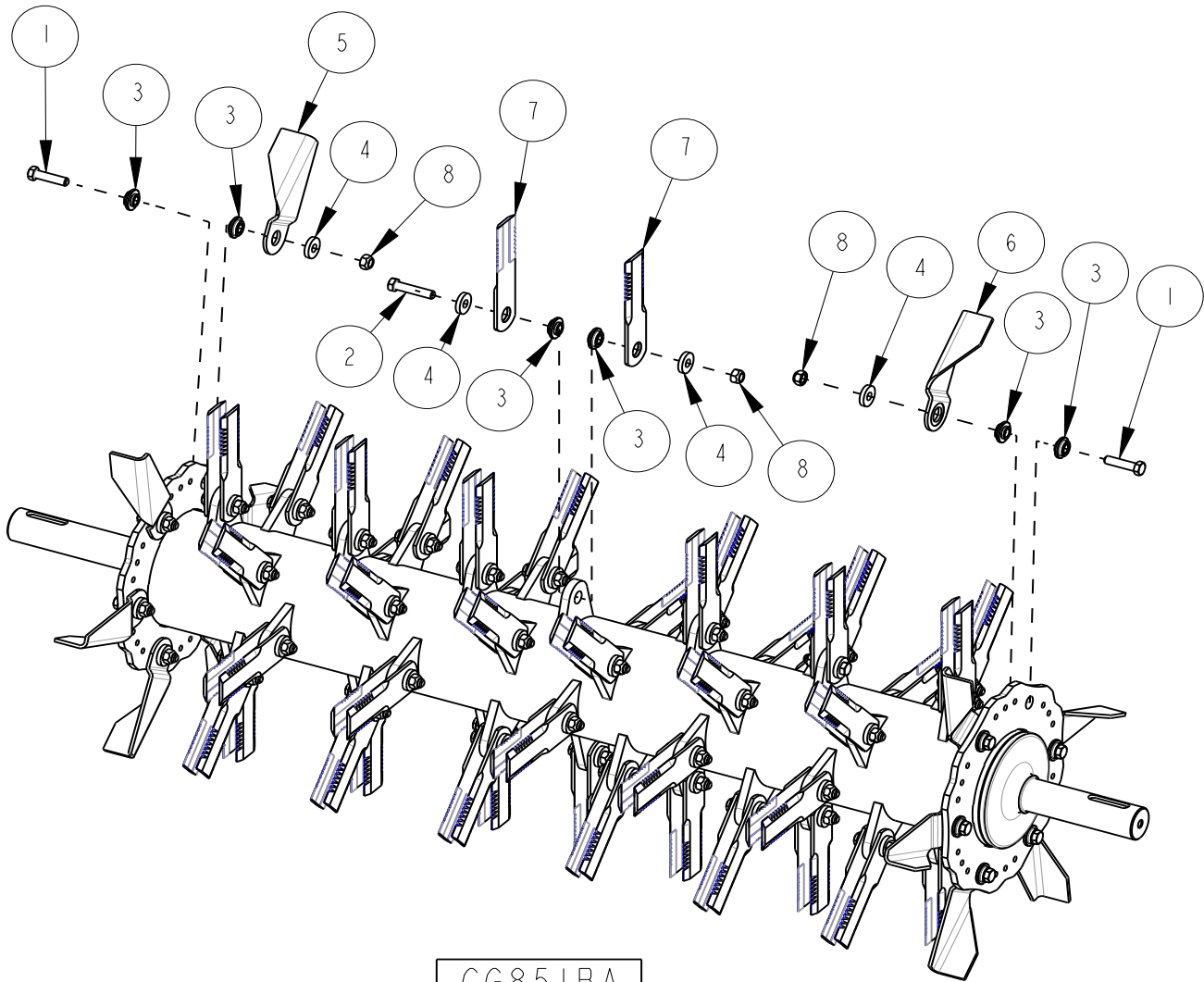
CS0145-05

Indicate implement serial number with any parts order





FRONT OF COMBINE



CG851BA

CS0145-05

Indicate implement serial number with any parts order

CASE AFX MAV Chopper

Page: 4 - 4
Date: 22MAR2022

Serial No Range From:
RMCA0100

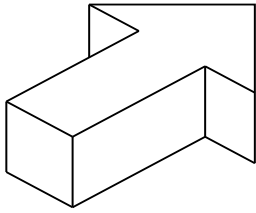
Serial No Range To:
PRESENT

ITEM NO.	PART NO.	DESCRIPTION	QTY	NOTE
1	BI2M-1250	BOLT HEX M12X50 C10.9 YZD Iso4014	12	
2	BI2M-1260	BOLT HEX M12X60 C10.9 YZD Iso4014	48	
3	HA553	BUSHING, MAV STD	120	NSS - BK553
4	HA555	WASHER, ROTOR 1.25 O.D.	108	NSS - BK555
5	HA570L	BLADE FAN 2 INCH LT	6	NSS - BK570L
6	HA570R	BLADE FAN 2 INCH RT	6	NSS - BK570R
7	HA655C	BLADE STR MAV SERRATED CARBIDE I60L	96	NSS - BK655C
8	N42M-12	NUT LOCK STL M12 C10 YZD DIN980V	60	
	BK570	BLADE KIT FAN MAV 2in (6-LT 6-RT)	1	INCLUDES 6x HA570L, 6x HA570R, 12x N42M-12
	BK570L	BLADE KIT FAN MAV 2in (6-LT)	1	INCLUDES 6x HA570L, 6x N42M-12
	BK570R	BLADE KIT FAN MAV 2in (6-RT)	1	INCLUDES 6x HA570R, 6x N42M-12
	BK655C	BLADE KIT HA655C (8)	12	INCLUDES 8x HA655C, 4x N42M-12
	BK553	KIT BUSHING HA553 (20)	6	
	BK555	KIT WASHER HA555 (20)	6	

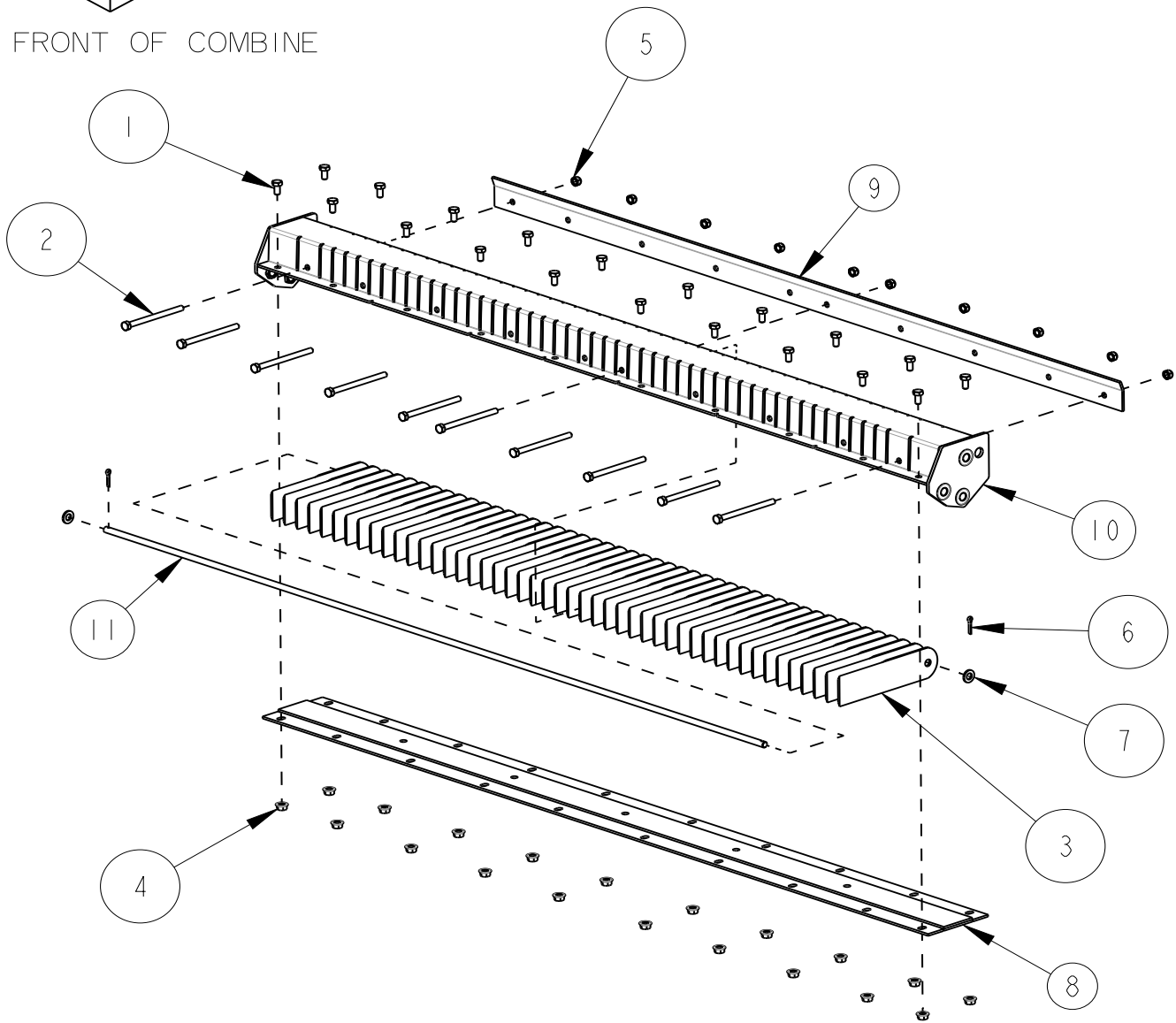
NSS = NOT SERVICED SEPARATELY

CS0145-05

Indicate implement serial number with any parts order



FRONT OF COMBINE



CG352BA

Indicate implement serial number with any parts order

CASE AFX MAV Chopper

Page: 5 - 2
Date: 16JUL2021

Serial No Range From:
RMCA0001

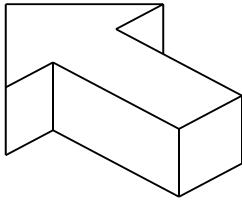
Serial No Range To:
PRESENT

ITEM NO.	PART NO.	DESCRIPTION	QTY	NOTE
1	BIIM-0816	BOLT HEX M8X16 C8.8 YZD Iso4014	20	
2	BIIM-08110	BOLT HEX M8X110 C8.8 YZD Iso4014	10	
3	HA700	BLADE STR KNIFE BAR	47	NSS - BK700
4	N2IM-08	NUT FLG M8 C8 YZD Iso4161	20	
5	N42M-08	NUT LOCK STL M8 C10 YZD DIN980V	10	
6	P2IM-0322	PIN COTTER M3X22	2	
7	WIIM-10	WASHER FLAT M10 x 20 x 2.3 YZD	2	
8	CGI52B	FLAT KBAR TOP 55W - BLACK	1	
9	CGI54B	PLATE PRESS KBAR 55L - BLACK	1	
10	CG351B	FRAME KNIFE BAR 55L - BLACK	1	
11	CGI53B	ROD KNIFE BAR 53.5L - BLACK	1	
	BK700	BLADE KIT HA700 (10)	5	

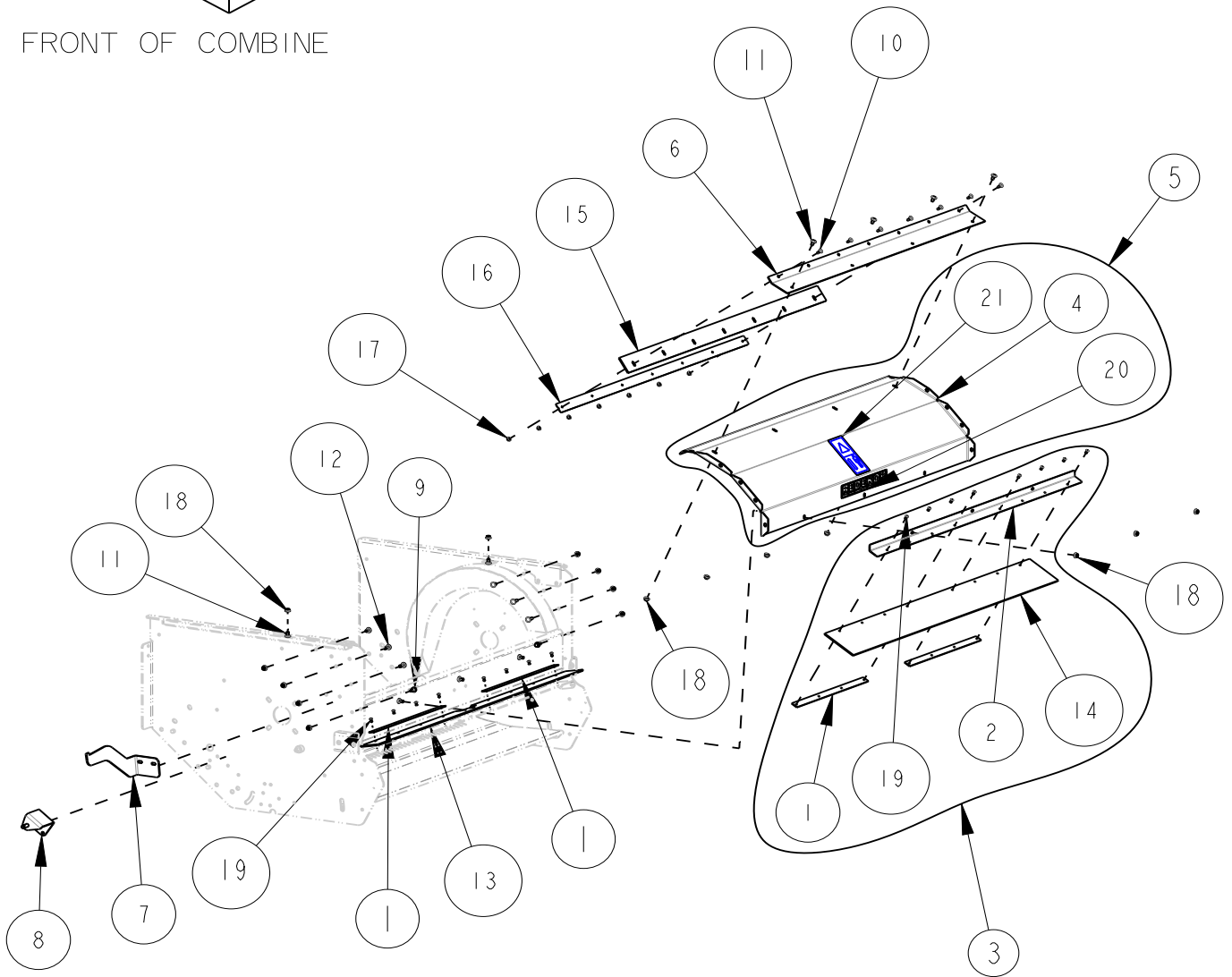
NSS = NOT SERVICED SEPARATELY

CS0145-05

Indicate implement serial number with any parts order



FRONT OF COMBINE



CS0145-05

Indicate implement serial number with any parts order

CASE AFX MAV Chopper

Page: 6 - 2
Date: 13OCT2023

Serial No Range From:
RMCA0001

Serial No Range To:
RMCA0227

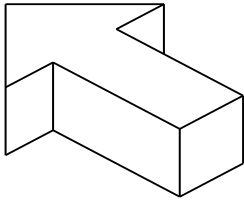
ITEM NO.	PART NO.	DESCRIPTION	QTY	NOTE
1	CG228B	STRAP, BELT SEAL 55W - BLACK	4	
2	CG463B	BRACKET TBOARD SEAL 55W - BLACK	1	
3	CG463BA	SEAL ASSY TOP TBOARD 55W - BLACK	1	
4	CH612B	HOOD CNH 55W - BLACK	1	NSS - CH612BA
5	CH612BA	HOOD CNH NARROW CHOPPER W/ DECALS - BLACK	1	
6	CH683B	BRACKET ROLLER SCRAPER MT - BLACK	1	
7	CS1102B	MOUNT SHIELD TOP REAR - BLACK	1	
8	CS1103B	BRACKET SHIELD BTM REAR - BLACK	1	
9	B21M-0820	BOLT FLG M8X20 C8.8 YZD Iso8102	2	
10	B31M-0616	BOLT RH M6X16 C8.8 YZD ISO8678 Short Neck	7	
11	B31M-0816	BOLT RH M8X16 C8.8 YZD ISO8678 Short Neck	11	
12	B31M-0825	BOLT RH M8X25 C8.8 YZD ISO8678 Short Neck	4	
13	CG226-01	BELT TBOARD LOWER SEAL 55W	1	
14	CG446-01	BELT TBOARD UPPER SEAL 55W	1	
15	CH651-01	SHEET ROLLER STRIPPER	1	
16	CH748-01	STRAP SCRAPER ROLLER AFX	1	S/S - CS1148-01
17	N21M-06	NUT FLG M6 C8 YZD Iso4161	7	
18	N21M-08	NUT FLG M8 C8 YZD Iso4161	17	
19	RO3-08	RIVET INCH GENERIC	16	
20	RP240	DECAL REDEKOP 12" X 2"	1	
21	RP872	DECAL SAFETY PROJECTILE HAZARD	1	

NSS = NOT SERVICED SEPARATELY S/S = SUPERSEDED BY

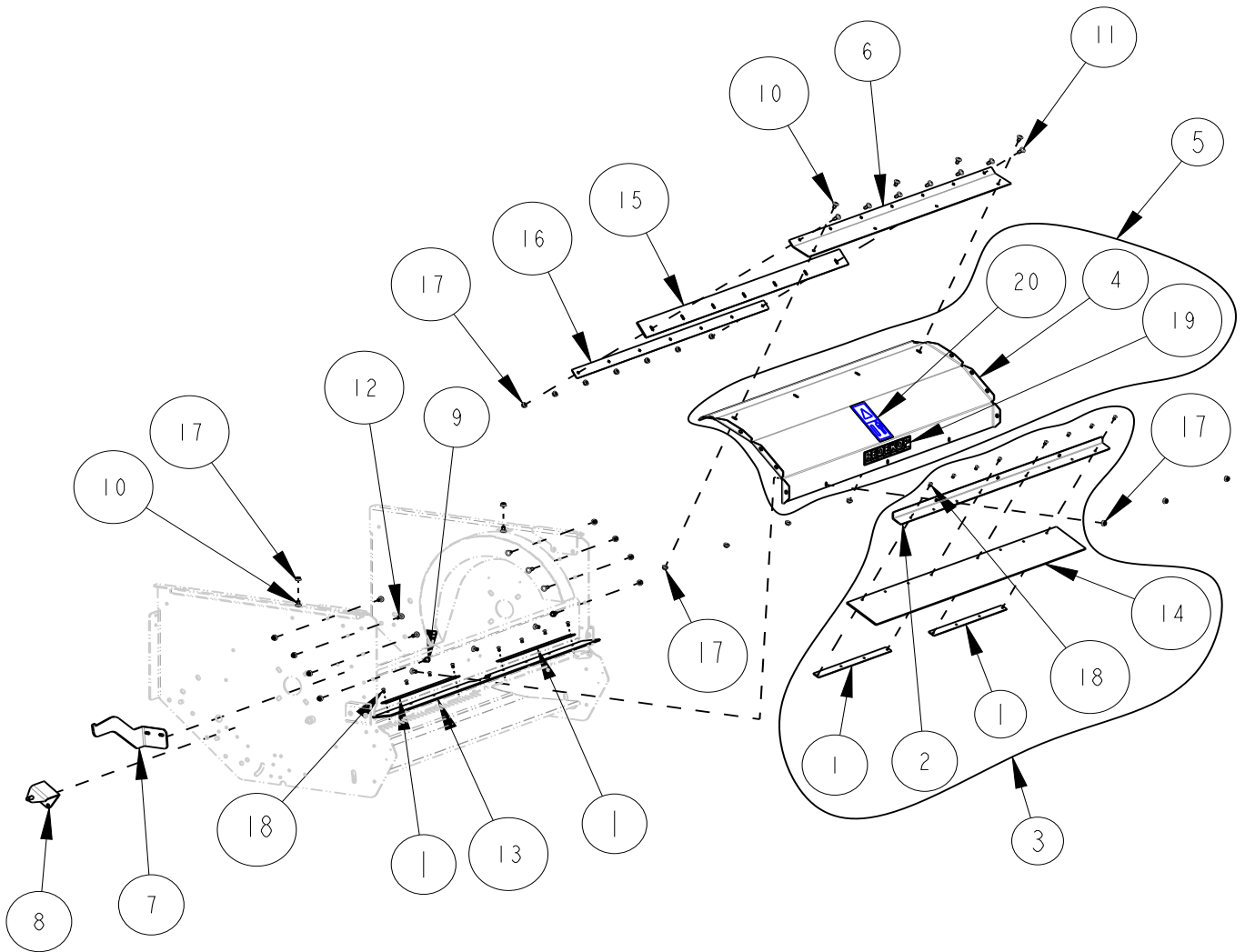
CS0145-05

Indicate implement serial number with any parts order





FRONT OF COMBINE



CS0145-05

Indicate implement serial number with any parts order

CASE AFX MAV Chopper

Page: 6 - 4
Date: 13OCT2023

Serial No Range From:
RMCA0228

Serial No Range To:
PRESENT

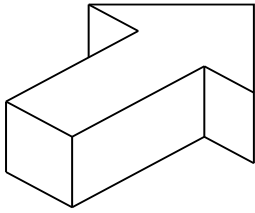
ITEM NO.	PART NO.	DESCRIPTION	QTY	NOTE
1	CG228B	STRAP, BELT SEAL 55W - BLACK	4	
2	CG463B	BRACKET TBOARD SEAL 55W - BLACK	1	
3	CG463BA	SEAL ASSY TOP TBOARD 55W - BLACK	1	
4	CH612B	HOOD CNH 55W - BLACK	1	NSS - CH612BA
5	CH612BA	HOOD CNH NARROW CHOPPER W/ DECALS - BLACK	1	
6	CH683B	BRACKET ROLLER SCRAPER MT - BLACK	1	
7	CS1102B	MOUNT SHIELD TOP REAR - BLACK	1	
8	CS1103B	BRACKET SHIELD BTM REAR - BLACK	1	
9	B21M-0820	BOLT FLG M8X20 C8.8 YZD Iso8102	2	
10	B31M-0816	BOLT RH M8x16 C8.8 YZD ISO8678 Short Neck	11	
11	B31M-0820	BOLT RH M8x20 C8.8 YZD ISO8678 Short Neck	7	
12	B31M-0825	BOLT RH M8x25 C8.8 YZD ISO8678 Short Neck	4	
13	CG226-01	BELT TBOARD LOWER SEAL 55W	1	
14	CG446-01	BELT TBOARD UPPER SEAL 55W	1	
15	CH651-01	SHEET ROLLER STRIPPER	1	
16	CS1148-01	STRAP UPPER CHAFF DOOR	1	
17	N21M-08	NUT FLG M8 C8 YZD Iso4161	24	
18	RO3-08	RIVET INCH GENERIC	16	
19	RP240	DECAL REDEKOP 12" X 2"	1	
20	RP872	DECAL SAFETY PROJECTILE HAZARD	1	

NSS = NOT SERVICED SEPARATELY

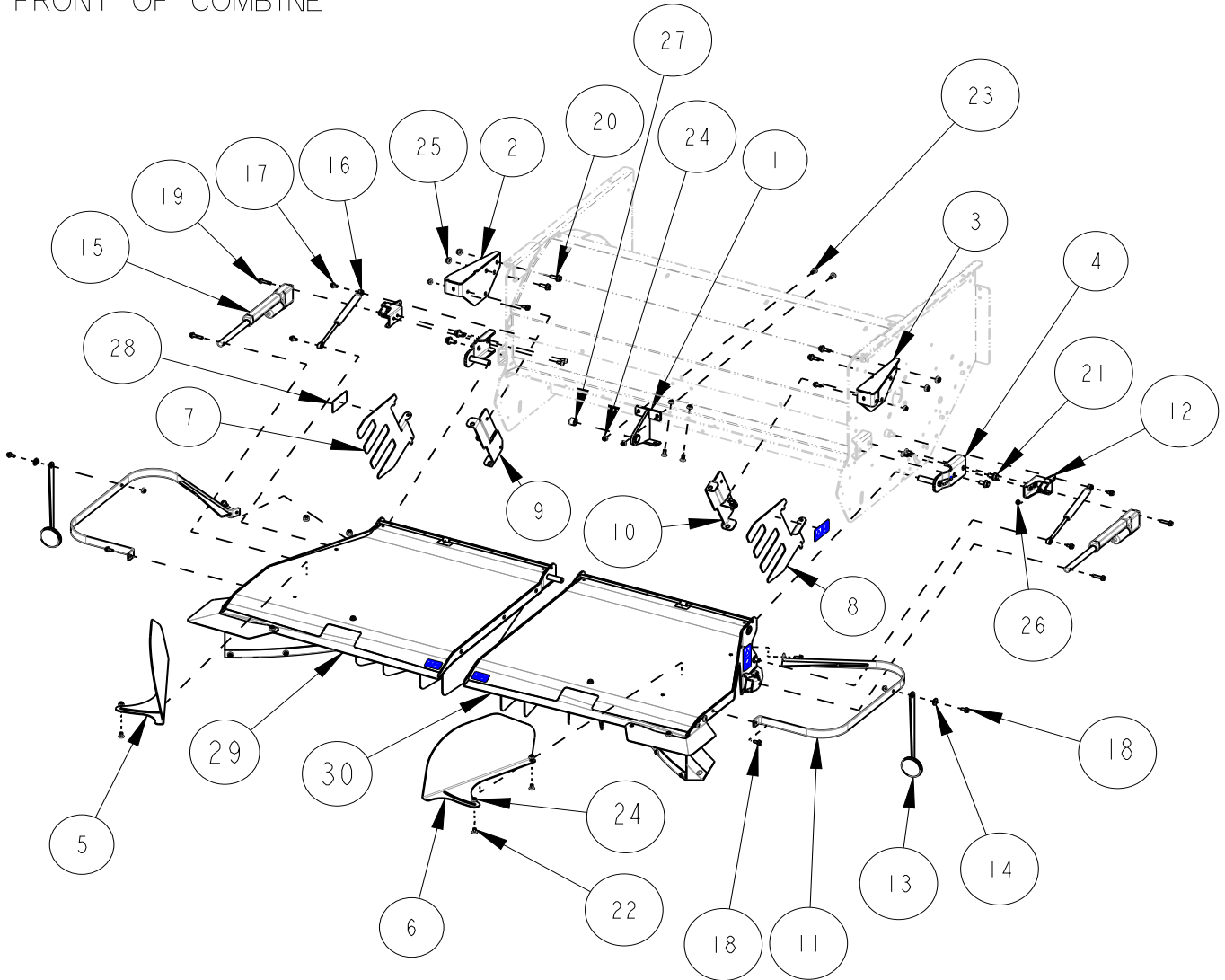
CS0145-05

Indicate implement serial number with any parts order





FRONT OF COMBINE



CS0145-05

Indicate implement serial number with any parts order

CASE AFX MAV Chopper

Page: 7 - 2
Date: 22MAR2022

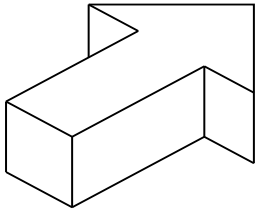
Serial No Range From:
RMCA0001

Serial No Range To:
PRESENT

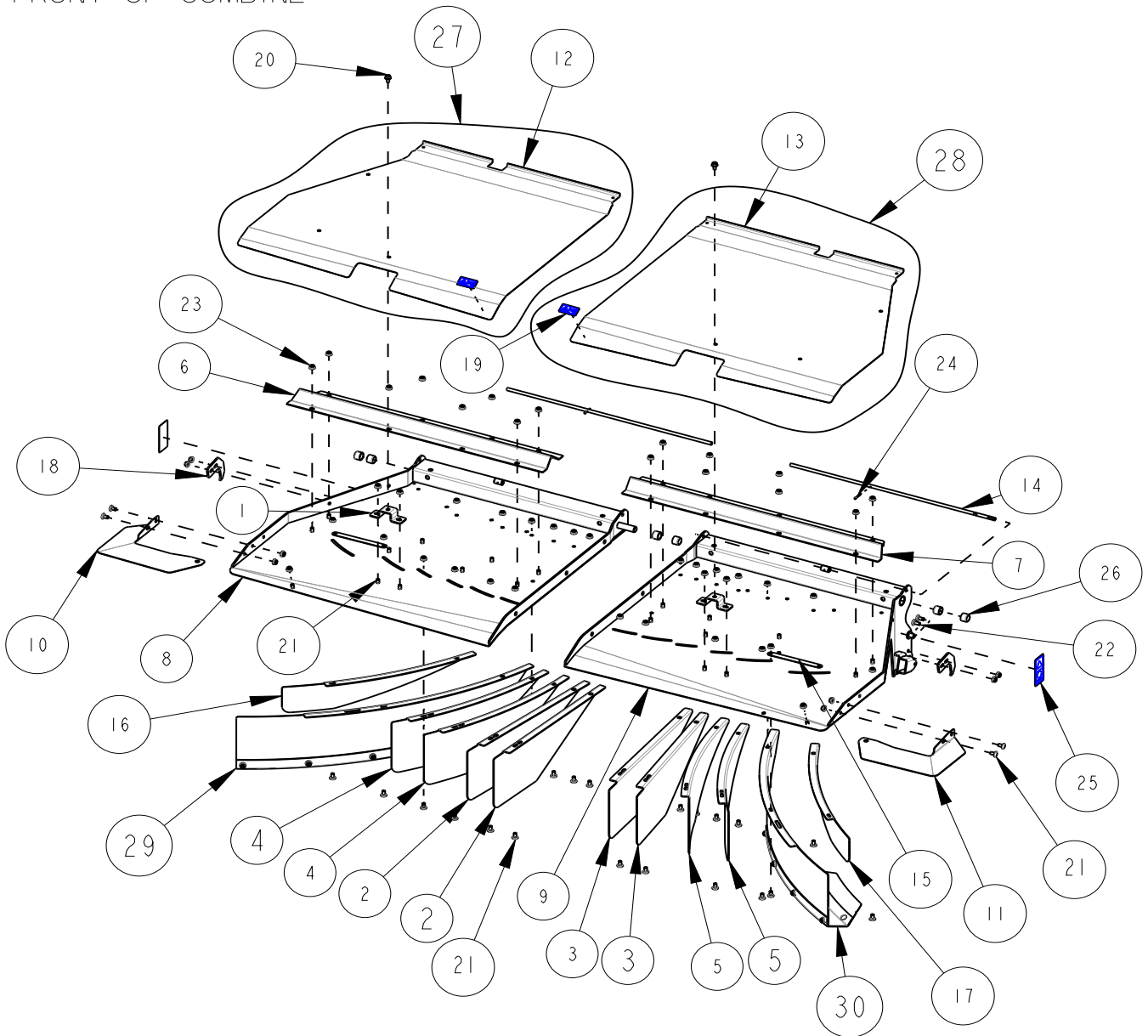
ITEM NO.	PART NO.	DESCRIPTION	QTY	NOTE
1	CG428BA	BRACKET TBOARD SUPPT - BLACK	1	INCLUDES RPIO9
2	CH6IOBL	MOUNT ACTUATOR CHPR LT - BLACK	1	
3	CH6IOBR	MOUNT ACTUATOR CHPR RT - BLACK	1	
4	CSIO32B	PIN TAILBOARD PIVOT - BLACK	2	
5	CSIO53BL	FIN STRAW DEFLECT LT - BLACK	1	
6	CSIO53BR	FIN STRAW DEFLECT RT - BLACK	1	
7	CSII39BL	RAKE WINDROW LT CASE - BLACK	1	
8	CSII39BR	RAKE WINDROW RT CASE - BLACK	1	
9	CSII4OBL	MOUNT WINDROW DEFLECTOR LT - BLACK	1	
10	CSII4OBR	MOUNT WINDROW DEFLECTOR RT - BLACK	1	
11	CSI7IB	GUARD, TAILBOARD - BLACK	2	
12	CS7OIZ	MOUNT, ACTUATOR BASE - YZD	2	
13	CS990A	REFLECTOR ASSEMBLY	2	
14	CS99IZ	SPACER REFLECTOR EU - YZD	2	
15	RPIO58	ACTUATOR	2	
16	RP95IA	SPRING GAS SHOCK	2	
17	B2IM-0816	BOLT FLG M8X16 C8.8 YZD Iso8102	4	
18	B2IM-0820	BOLT FLG M8X20 C8.8 YZD Iso8102	10	
19	B2IM-0840	BOLT FLG M8X40 C8.8 YZD Iso8102	4	
20	B2IM-1030	BOLT FLG M10X30 C8.8 YZD Iso8102	4	
21	B2IM-1225	BOLT FLG M12X25 C8.8 YZD Iso8102	4	
22	B3IM-0816	BOLT RH M8x16 C8.8 YZD ISO8678 Short Neck	4	
23	B3IM-0820	BOLT RH M8x20 C8.8 YZD ISO8678 Short Neck	8	
24	N2IM-08	NUT FLG M8 C8 YZD Iso416I	22	
25	N2IM-10	NUT FLG M10 C8 YZD Iso416I	4	
26	N42M-08	NUT LOCK STL M8 C10 YZD DIN980V	4	
27	RPIO9	BUSHING, NYLON	1	
28	RPI268	DECAL EU SAFETY PROJECTILE HAZARD / STAND CLEAR - 100x50	2	
29	CG477BAL	TAILBOARD ASSY 55W WS LT - BLACK	1	
29	CG732BAL	TAILBOARD ASSY 55W SCU LT - BLACK	1	FOR CHOPPER WITH SCU
30	CG477BAL	TAILBOARD ASSY 55W WS RT - BLACK	1	
30	CG732BAR	TAILBOARD ASSY 55W SCU RT - BLACK	1	FOR CHOPPER WITH SCU

CS0145-05

Indicate implement serial number with any parts order



FRONT OF COMBINE



CS0145-05

Indicate implement serial number with any parts order

CASE AFX MAV Chopper

Page: 8 - 2
Date: 22MAR2022

Serial No Range From:
RMCA0001

Serial No Range To:
PRESENT

ITEM NO.	PART NO.	DESCRIPTION	QTY	NOTE
1	CC331B	BRACKET TBOARD COVER LATCH - BLACK	2	
2	CG116BL	FIN, STR 22L LT - BLACK	2	
3	CG116BR	FIN, STR 22L RT - BLACK	2	
4	CG120BL	FIN, CRV 22L LT - BLACK	2	
5	CG120BR	FIN, CRV 22L RT - BLACK	2	
6	CG357BL	SUPPORT TBOARD LT 55W - BLACK	1	
7	CG357BR	SUPPORT TBOARD RT 55W - BLACK	1	
8	CG477BL	BASE TAILBOARD 55W LT - BLACK	1	
9	CG477BR	BASE TAILBOARD 55W RT - BLACK	1	
10	CG478BL	DEFLECTOR, WS LT - BLACK	1	
11	CG478GR	DEFLECTOR, WS RT - GREEN	1	
12	CG481BL	PANEL TBOARD 55W LT - BLACK	1	NSS - CG481BAL
13	CG481BR	PANEL TBOARD 55W RT - BLACK	1	NSS - CG481BAR
14	CG482Z	ROD TBOARD COVER 55W YZD	2	
15	CG733B	LINK WIDE SPREAD - BLACK	2	
16	CG761BL	FIN, CRV LT 19L X 4H WS - BLACK	1	
17	CG761BR	FIN, CRV RT 19L X 4H WS - BLACK	1	
18	CS973Z	HOOD TBOARD STOP	2	
19	8439435I	DECAL SAFETY PINCH POINT	2	
20	B21M-0816	BOLT FLG M8X16 C8.8 YZD Iso8102	2	
21	B31M-0816	BOLT RH M8x16 C8.8 YZD ISO8678 Short Neck	51	
22	B31M-0820	BOLT RH M8x20 C8.8 YZD ISO8678 Short Neck	4	
23	N21M-08	NUT FLG M8 C8 YZD Iso416I	54	
24	P21M-0228	PIN COTTER M2X28	2	
25	RPI060	DECAL SAFETY RUN ON	2	
26	RPI09	BUSHING, NYLON	6	
27	CG481BAL	TAILBOARD COVER LT w/ DECAL - BLACK	1	INCLUDES CG481BL & 8439435I
28	CG481BAR	TAILBOARD COVER RT w/ DECAL - BLACK	1	INCLUDES CG481BR & 8439435I
29	CG237BAL	FIN 40L WIDE SPREAD LT - BLACK	1	
29	CG732BL	FIN 40L CRV SCU LT - BLACK	1	FOR CHOPPER WITH SCU
30	CG237BAR	FIN 40L WIDE SPREAD RT - BLACK	1	
30	CG732BR	FIN 40L CRV SCU RT - BLACK	1	FOR CHOPPER WITH SCU

NSS = NOT SERVICED SEPARATELY

CS0145-05

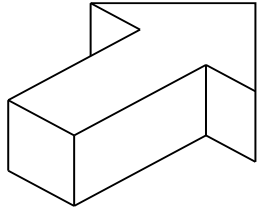
Indicate implement serial number with any parts order

CASE AFX MAV VENTS & SHIELD

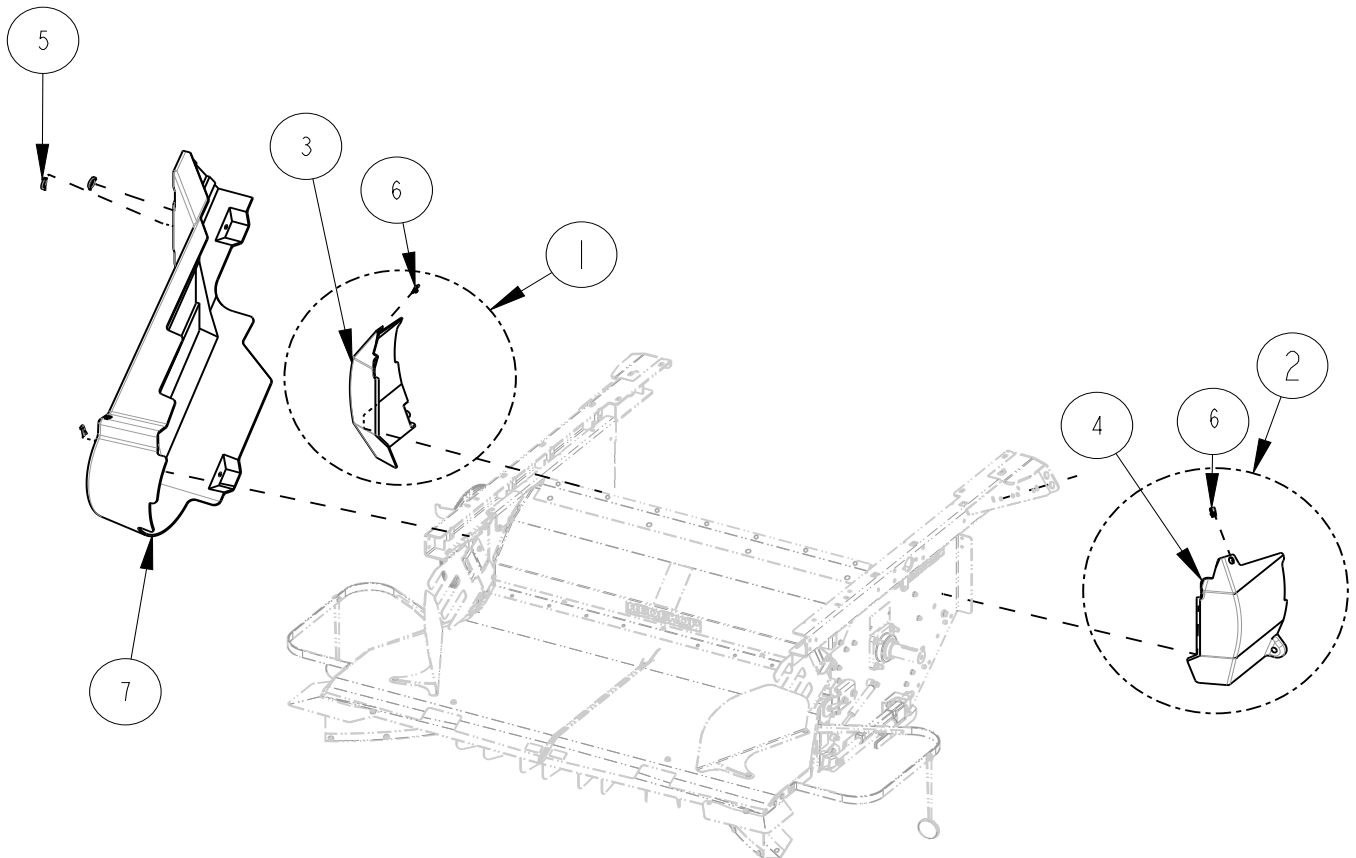
Page: 9 - 1
Date: 22MAR2022

Serial No Range From:
RMCA0001

Serial No Range To:
RMCA0099



FRONT OF COMBINE



CS0145-05

Indicate implement serial number with any parts order

CASE AFX MAV VENTS & SHIELD

Page: 9 - 2
Date: 22MAR2022

Serial No Range From:
RMCA0001

Serial No Range To:
RMCA0099

ITEM NO.	PART NO.	DESCRIPTION	QTY	NOTE
1	CS1106BA	VENT CHOPPER LT - BLACK	1	S/S CS1162BAL
2	CS1107BA	VENT CHOPPER RT - BLACK	1	S/S CS1162BAR
3	CS1106-01	VENT AFX LEFT	1	S/S CS1162BL
4	CS1107-01	VENT AFX RIGHT	1	S/S CS1162BR
5	RPI105	PIN, LYNCH 3/16"X1.25"	3	
6	RPI144	MIOX1.5 NO SLIP CLIP-ON BARREL NUT	2	
7	RPI172	SHIELD CASE AFX	1	

S/S = SUPERSEDED BY

CS0145-05

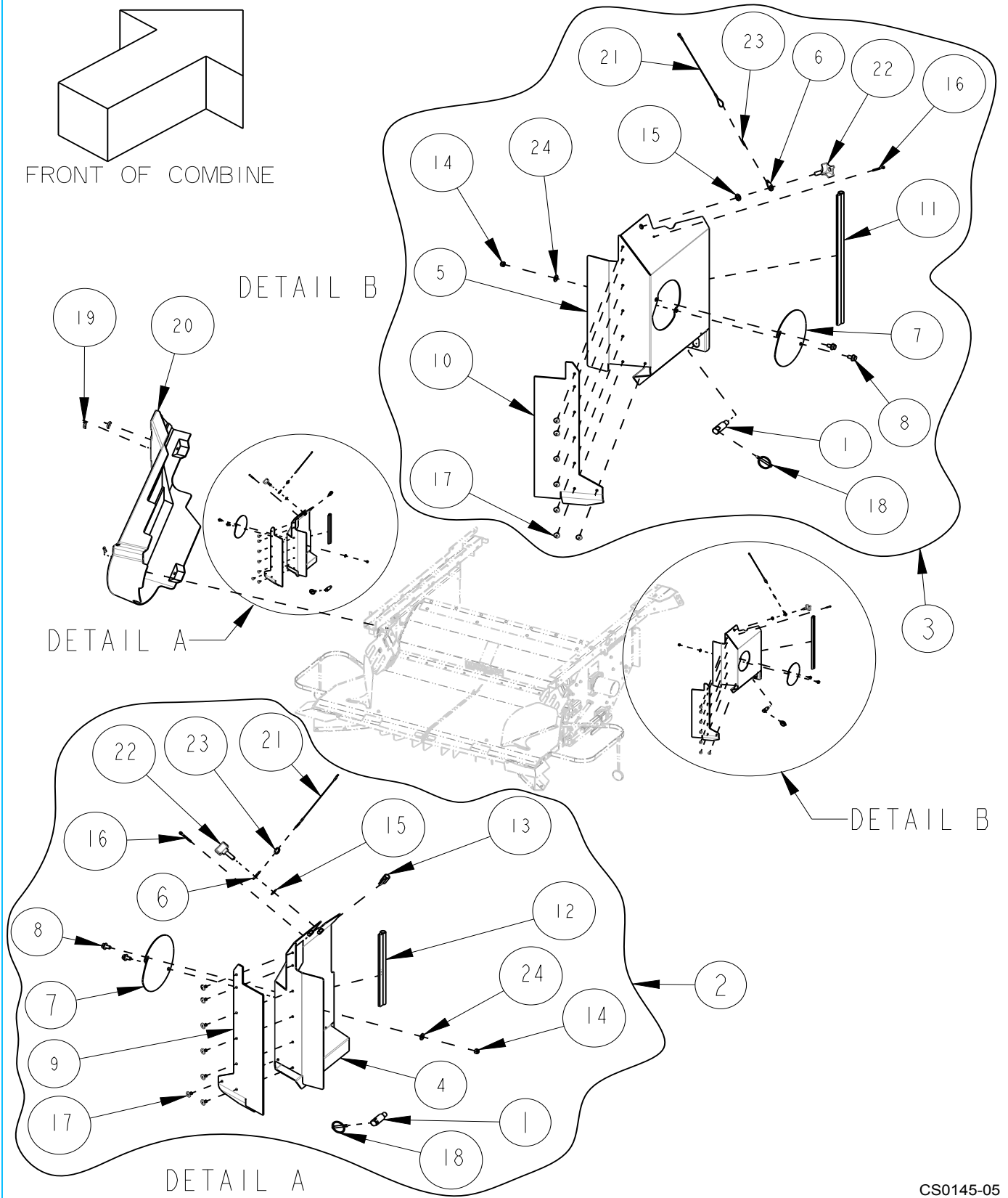
Indicate implement serial number with any parts order

CASE AFX MAV VENTS & SHIELD

Page: 9 - 3
Date: 15SEP2023

Serial No Range From:
RMCA0100

Serial No Range To:
RMCA0227



CS0145-05

Indicate implement serial number with any parts order

CASE AFX MAV VENTS & SHIELD

Page: 9 - 4
Date: 15SEP2023

Serial No Range From:
RMCA0100

Serial No Range To:
RMCA0227

ITEM NO.	PART NO.	DESCRIPTION	QTY	NOTE
1	CS1035Z	PIN VENT COMBINE MT AFX	2	
2	CS1162BAL	VENT ASSY LT AFX - BLACK	1	S/S - CS1184BAL
3	CS1162BAR	VENT ASSY RT AFX - BLACK	1	S/S - CS1184BAR
4	CS1162BL	VENT LT AFX - BLACK	1	NSS - CS1162BAL
5	CS1162BR	VENT RT AFX - BLACK	1	NSS - CS1162BAR
6	CS1173B	MIO KNOB LANYARD	2	
7	SC475B	COVER SCU SHIELD - BLACK	2	
8	B21M-0816	BOLT FLG M8X16 C8.8 YZD Iso8102	8	
9	CS1162-05L	VENT RUBBER SEAL	1	
10	CS1162-05R	VENT RUBBER SEAL	1	
11	CS1166-01	VENT BULB SEAL	1	
12	CS1166-02	VENT BULB SEAL	1	
13	CS1166-03	VENT BULB SEAL	1	
14	N42M-08	NUT LOCK STL M8 C10 YZD DIN980V	8	
15	N63M-10	NUT PUSH M10 BLACK PH	2	
16	P21M-0336	PIN COTTER M3X36	2	
17	RO3-08H	RIVET SS 0.188 x .375L LARGE FLANGE	14	
18	RPI094	PIN LYNCH M6 x 45L w/LANYARD ZN	2	
19	RPI105	PIN, LYNCH 3/16"X1.25"	3	
20	RPI172	SHIELD CASE AFX	1	
21	RPI296	LANYARD 18-8 SS 3/64 X 10" LOOP EYE	2	
22	RPI341	KNOB WITH FOUR ARMS M10 X1.5 THREADS	2	
23	RPI342	ZINC-PLATED STEEL SPLIT RINGS	2	
24	WIIM-08	WASHER FLAT M8 x 18.8 x 2.3 YZD	2	

NSS = NOT SERVICED SEPARATELY S/S = SUPERSEDED BY

CS0145-05

Indicate implement serial number with any parts order

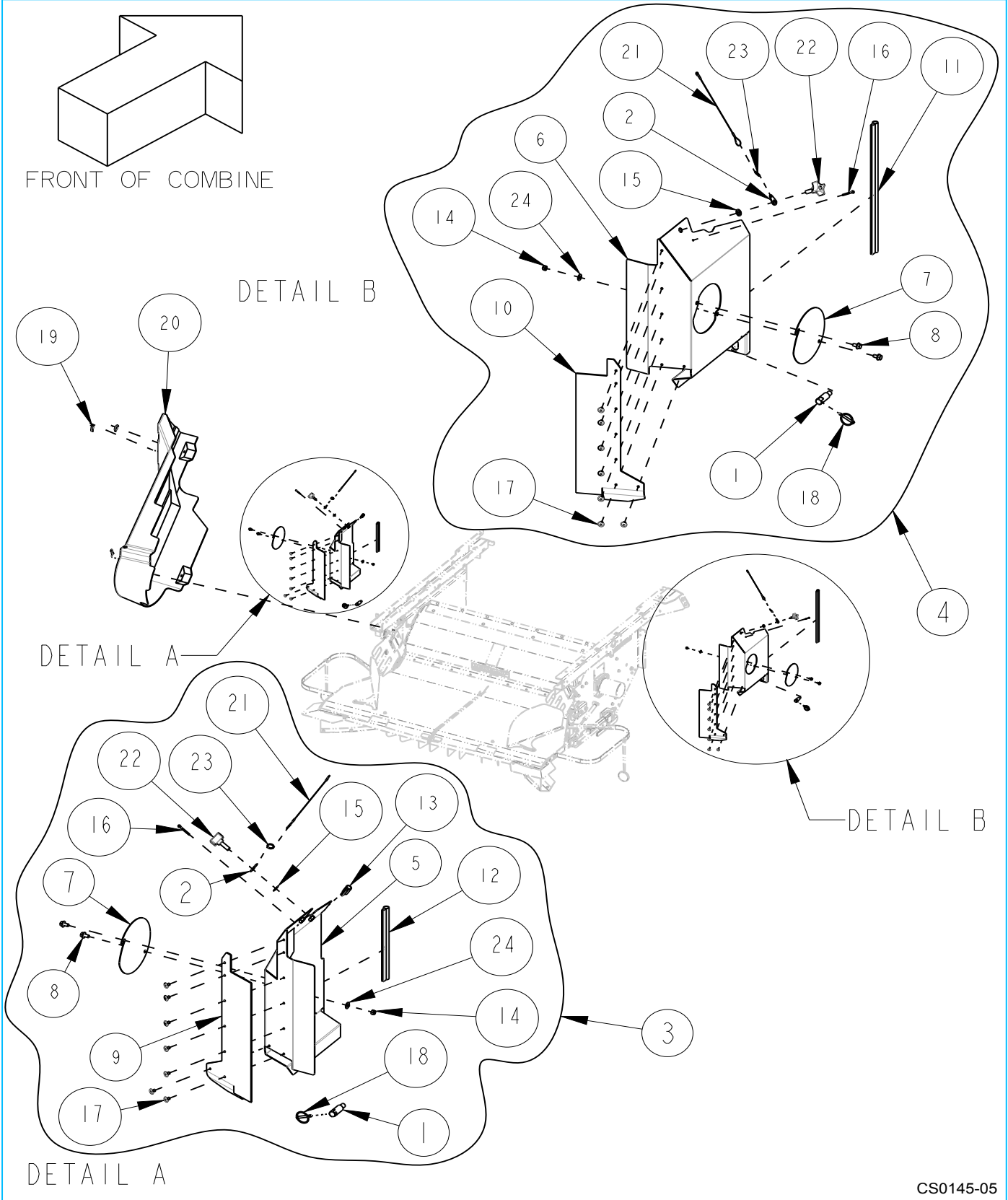


CASE AFX MAV VENTS & SHIELD

Page: 9 - 5
Date: 15SEP2023

Serial No Range From:
RMCA0228

Serial No Range To:
PRESENT



CS0145-05

Indicate implement serial number with any parts order

CASE AFX MAV VENTS & SHIELD

Page: 9 - 6
Date: 15SEP2023

Serial No Range From:
RMCA0228

Serial No Range To:
PRESENT

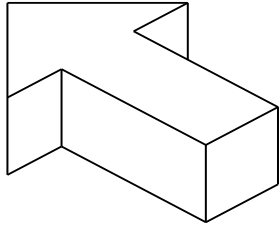
ITEM NO.	PART NO.	DESCRIPTION	QTY	NOTE
1	CS1035Z	PIN VENT COMBINE MT AFX	2	
2	CS1173B	MIO KNOB LANYARD	2	
3	CS1184BAL	VENT ASSY LT AFX - BLACK	1	
4	CS1184BAR	VENT ASSY RT AFX - BLACK	1	
5	CS1184BL	VENT LT AFX - BLACK	1	NSS - CS1184BAL
6	CS1184BR	VENT RT AFX - BLACK	1	NSS - CS1184BAR
7	SC475B	COVER SCU SHIELD - BLACK	2	
8	B21M-0816	BOLT FLG M8X16 C8.8 YZD Iso8102	4	
9	CS1162-05L	VENT RUBBER SEAL	1	
10	CS1162-05R	VENT RUBBER SEAL	1	
11	CS1166-01	VENT BULB SEAL	1	
12	CS1166-02	VENT BULB SEAL	1	
13	CS1166-03	VENT BULB SEAL	1	
14	N42M-08	NUT LOCK STL M8 C10 YZD DIN980V	2	
15	N63M-10	NUT PUSH M10 BLACK PH	2	
16	P21M-0336	PIN COTTER M3X36	2	
17	RO3-08H	RIVET SS 0.188 x .375L LARGE FLANGE	14	
18	RPI094	PIN LYNCH M6 x 45L w/LANYARD ZN	2	
19	RPI105	PIN, LYNCH 3/16"X1.25"	3	
20	RPI172	SHIELD CASE AFX	1	
21	RPI296	LANYARD 18-8 SS 3/64 X 10" LOOP EYE	2	
22	RPI341	KNOB WITH FOUR ARMS M10 X1.5 THREADS	2	
23	RPI342	ZINC-PLATED STEEL SPLIT RINGS	2	
24	WIIM-08	WASHER FLAT M8 x 18.8 x 2.3 YZD	2	

NSS = NOT SERVICED SEPARATELY

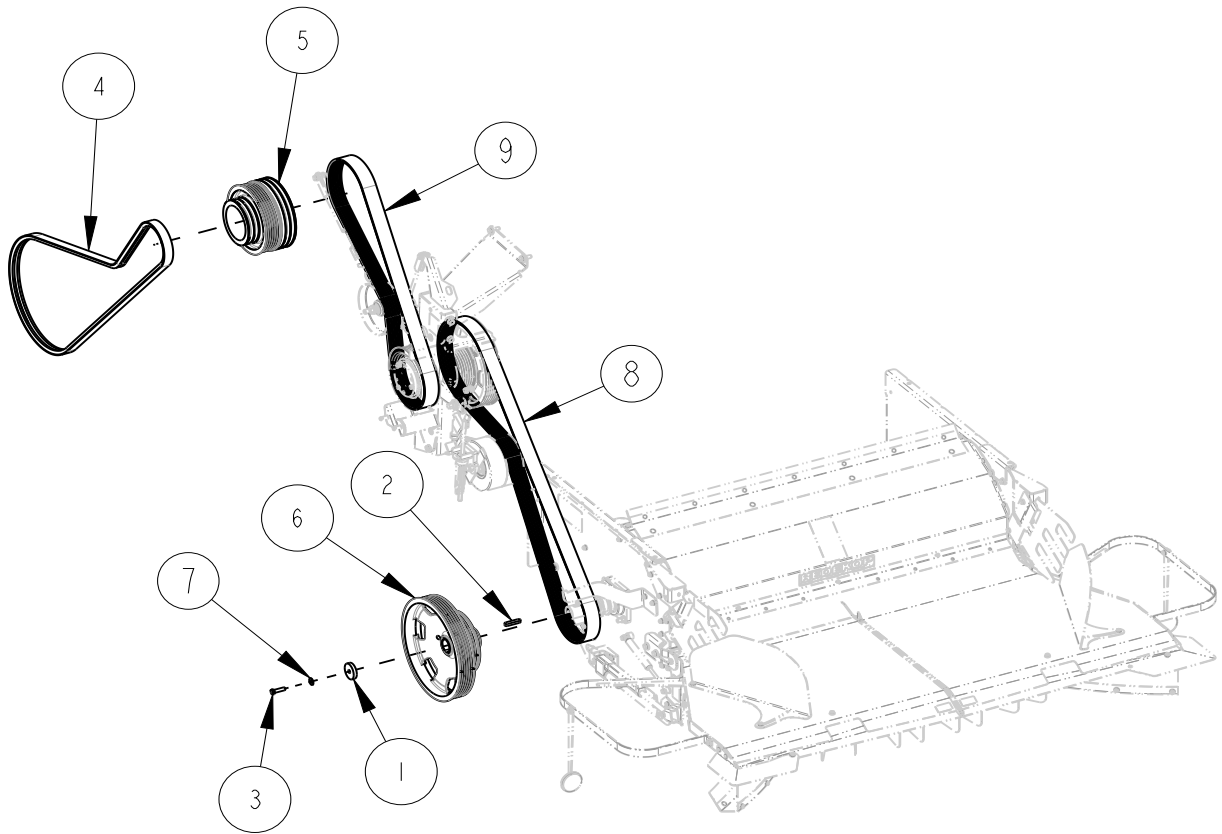
CS0145-05

Indicate implement serial number with any parts order





FRONT OF COMBINE



CS0145-05

Indicate implement serial number with any parts order

CASE AFX MAV Chopper

Page: 10 - 2
Date: 23JUN2022

Serial No Range From:
RMCA0001

Serial No Range To:
PRESENT

ITEM NO.	PART NO.	DESCRIPTION	QTY	NOTE
1	CS777Z	WASHER .5 X 2.5 X .188 YZD	1	
2	323624	KEY OVAL 14mm x 9mm x 63mm L Class 5 Plain	1	
3	B11M-1245	BOLT HEX M12X45 C8.8 YZD Iso4014	1	
4	BE2B117K	VBELT 2B 117L KEVLAR	1	
5	RP1135	SHEAVE PTO 6PVM DRIVE	1	
6	RP1138	SHEAVE CHOPPER M DRIVE	1	
7	W31M-12	WASHER, BELLEVILLE	1	
8	BE6M122K	VBELT 6M 122L KEVLAR	1	
9	BE6M92K	VBELT 6M 92L KEVLAR	1	

CS0145-05

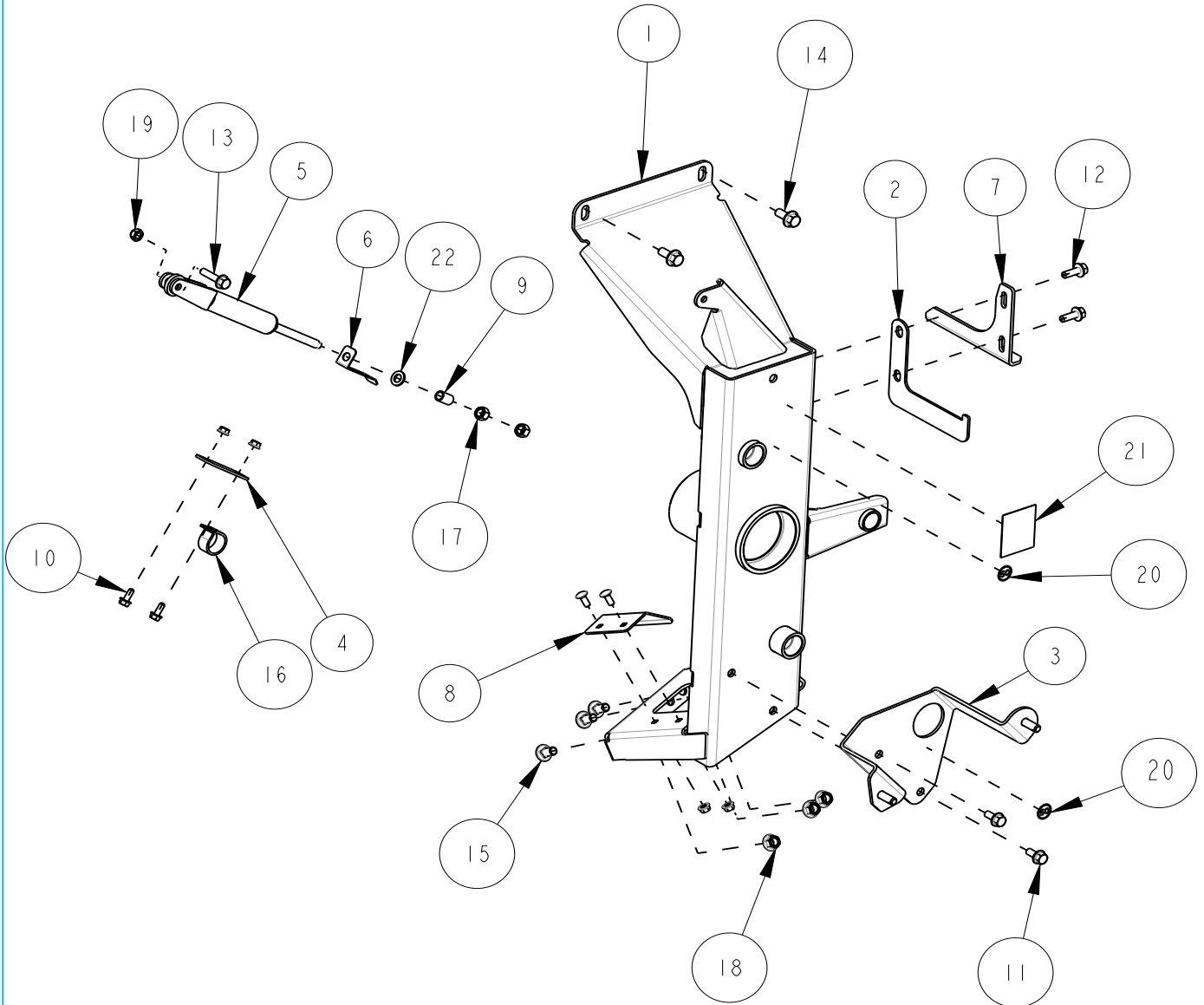
Indicate implement serial number with any parts order _____

CASE AFX MAV Chopper Jackshaft

Page: 11 - 1
Date:15SEP2023

Serial No Range From:
JS350

Serial No Range To:
PRESENT



CS0145-05

Indicate implement serial number with any parts order

CASE AFX MAV Chopper Jackshaft

Page: 11-2
Date: 15SEP2023

Serial No Range From:
JS350

Serial No Range To:
PRESENT

ITEM NO.	PART NO.	DESCRIPTION	QTY	NOTE
1	CH660B	JACKSHAFT AFX 6M - BLACK	1	
2	CS1063B	HANGER UPPER SHIELD - BLACK	1	
3	CS1104B	BRACKET BTM FRT SHIELD - BLACK	1	
4	CS1141B	STRAP SUMP LINE CASE - BLACK	1	
5	CS784B	SPRING ASSY WELD INT CHOPPER HS - BLACK	1	
6	CS797Z	INDICATOR INTERNAL CHOPPER HS SPRING - YZD	1	
7	CS799B	BRACKET BELT GUIDE - BLACK	1	
8	CS824B	BRACKET HYD HOSE MNT - BLACK	1	
9	CS856Z	SPACER ROLLER - YZD	1	
10	B21M-0820	BOLT FLG M8X20 C8.8 YZD Iso8102	2	
11	B21M-1025	BOLT FLG M10X25 C8.8 YZD Iso8102	2	
12	B21M-1030	BOLT FLG M10X30 C8.8 YZD Iso8102	2	
13	B21M-1045	BOLT FLG M10X45 C8.8 YZD Iso8102	1	
14	B21M-1230	BOLT FLG M12X30 C8.8 YZD Iso8102	2	
15	B31M-1225	BOLT RH M12X25 C8.8 YZD ISO8678 Short Neck	3	
16	H99-20	TUBE STRAP 1.25 OD, .375 HOLE ZN RUBBER	1	
17	N11M-12	NUT HEX M12 C8 YZD ISO4032	2	
18	N21M-12	NUT FLG M12 C8 YZD Iso4161	3	
19	N42M-10	NUT LOCK STL M10 C10 YZD DIN980V	1	
20	RP1092	DECAL GREASE 50 HR	2	
21	RP995	DECAL JS G1 SERIAL SERIAL NUMBER w/ BARCODE	1	
22	WI1M-12	WASHER FLAT M12 x 23.5 x 2.4 YZD	1	

CS0145-05

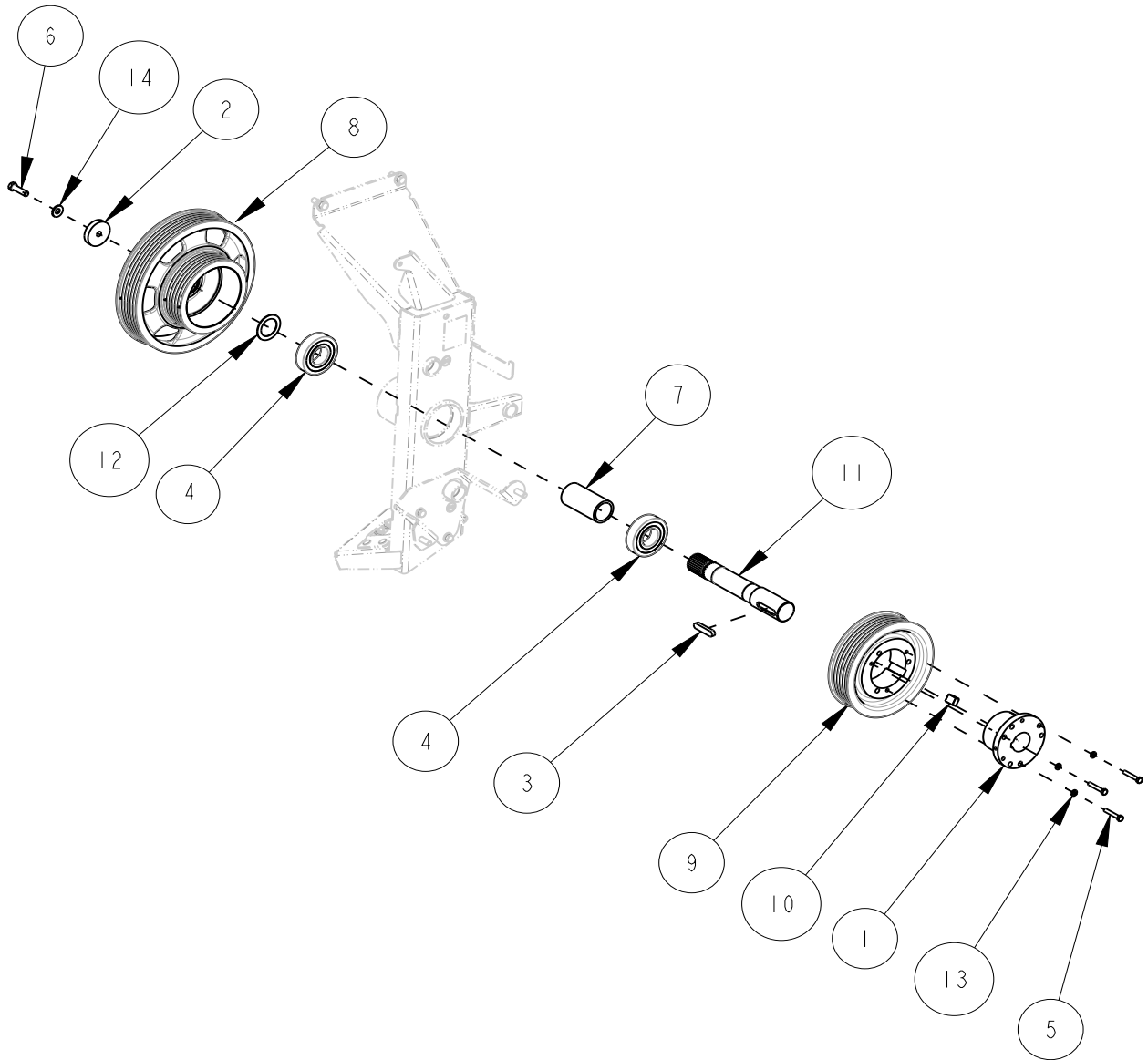
Indicate implement serial number with any parts order

CASE AFX MAV Chopper Jackshaft

Page: 12 - 1
Date: 15SEP2023

Serial No Range From:
JS350

Serial No Range To:
JS449



CS0145-05

Indicate implement serial number with any parts order

CASE AFX MAV Chopper Jackshaft

Page: 12-2
Date: 15SEP2023

Serial No Range From:
JS350

Serial No Range To:
JS449

ITEM NO.	PART NO.	DESCRIPTION	QTY	NOTE
1	CS1157-01	BUSHING TAPER RI 50mm ID	1	S/S - RPI151
2	CS777Z	WASHER .5 X 2.5 X .188 - YZD	1	
3	323624	KEY OVAL 14mm x 9mm x 63mm L Class 5 Plain	1	
4	87624213	BEARING, 45mm ID	2	
5	BI1M-0850	BOLT HEX M8X50 C8.8 YZD Iso4014	3	
6	BI1M-1245	BOLT HEX M12X45 C8.8 YZD Iso4014	1	
7	CS776-01	SLEEVE CASE JSHAFT	1	
8	RPI137	PULLEY 6PVM x 2 DRIVER JACKSHAFT	1	
9	RPI150	SHEAVE 6M 9.4 OD RI	1	
10	RPI151-01	KEY BUSHING RI SPLIT TAPER 50mm ID	1	
11	RP920	SHAFT JACKSHAFT	1	
12	RP955	WASHER FLAT	1	
13	W21M-08	WASHER HELICAL LOCK M8	3	
14	W31M-12	WASHER SPRING M12	1	

S/S = SUPERSEDED BY

CS0145-05

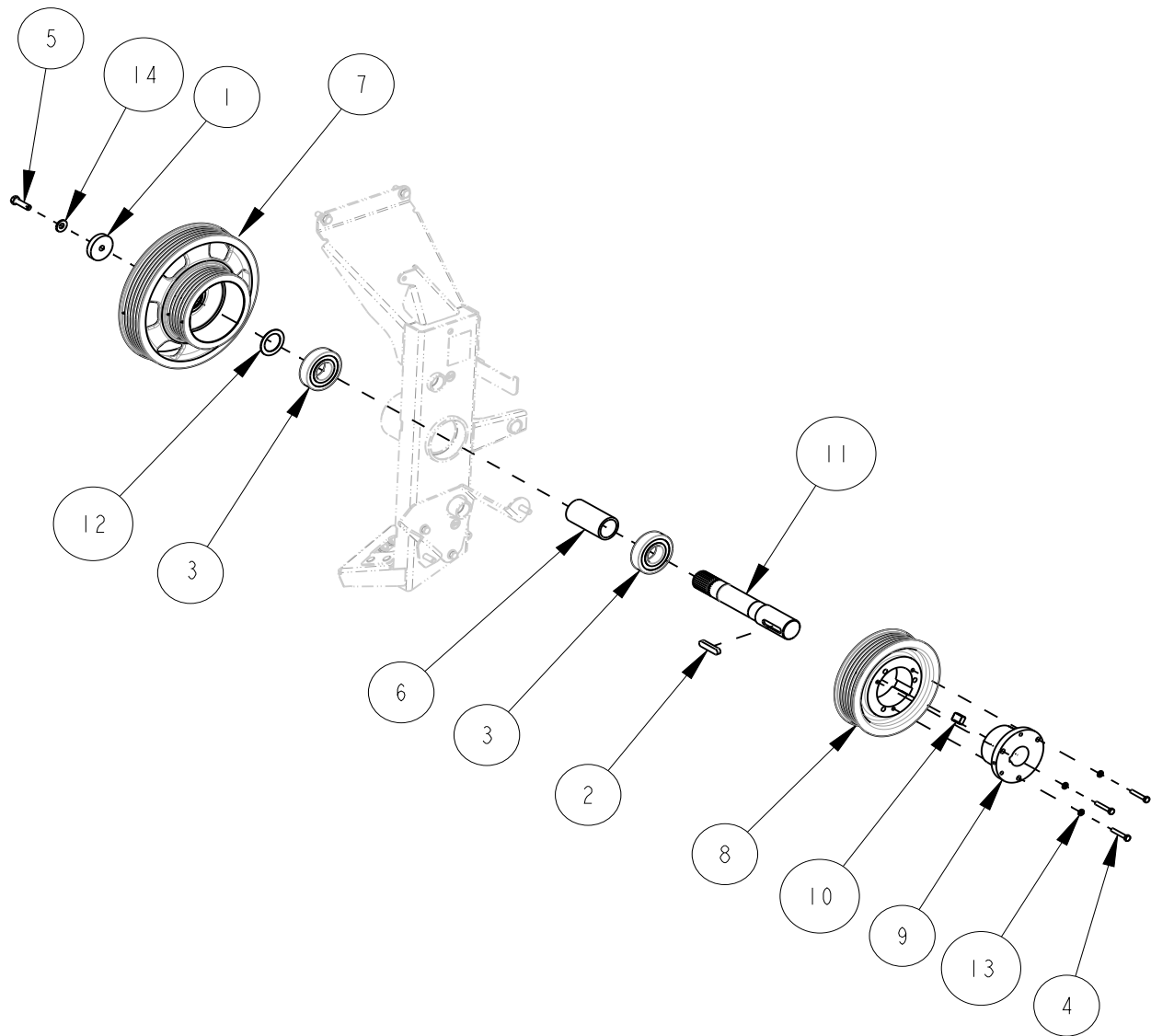
Indicate implement serial number with any parts order

CASE AFX MAV Chopper Jackshaft

Page: 13 - 1
Date: 15SEP2023

Serial No Range From:
JS450

Serial No Range To:
PRESENT



CS0145-05

Indicate implement serial number with any parts order

CASE AFX MAV Chopper Jackshaft

Page: 13-2
Date: 15SEP2023

Serial No Range From:
JS450

Serial No Range To:
PRESENT

ITEM NO.	PART NO.	DESCRIPTION	QTY	NOTE
1	CS777Z	WASHER .5 X 2.5 X .188 - YZD	1	
2	323624	KEY OVAL 14mm x 9mm x 63mm L Class 5 Plain	1	
3	87624213	BEARING, 45mm ID	2	
4	BIIM-0850	BOLT HEX M8X50 C8.8 YZD Iso4014	3	
5	BIIM-1245	BOLT HEX M12X45 C8.8 YZD Iso4014	1	
6	CS776-01	SLEEVE CASE JSHAFT	1	
7	RPI137	PULLEY 6PVM x 2 DRIVER JACKSHAFT	1	
8	RPI150	SHEAVE 6M 9.4 OD RI	1	
9	RPI151	BUSHING RI SPLIT TAPER 50mm ID	1	
10	RPI151-01	KEY BUSHING RI SPLIT TAPER 50mm ID	1	
11	RP920	SHAFT JACKSHAFT	1	
12	RP955	WASHER FLAT	1	
13	W2IM-08	WASHER HELICAL LOCK M8	3	
14	W3IM-12	WASHER SPRING M12	1	

CS0145-05

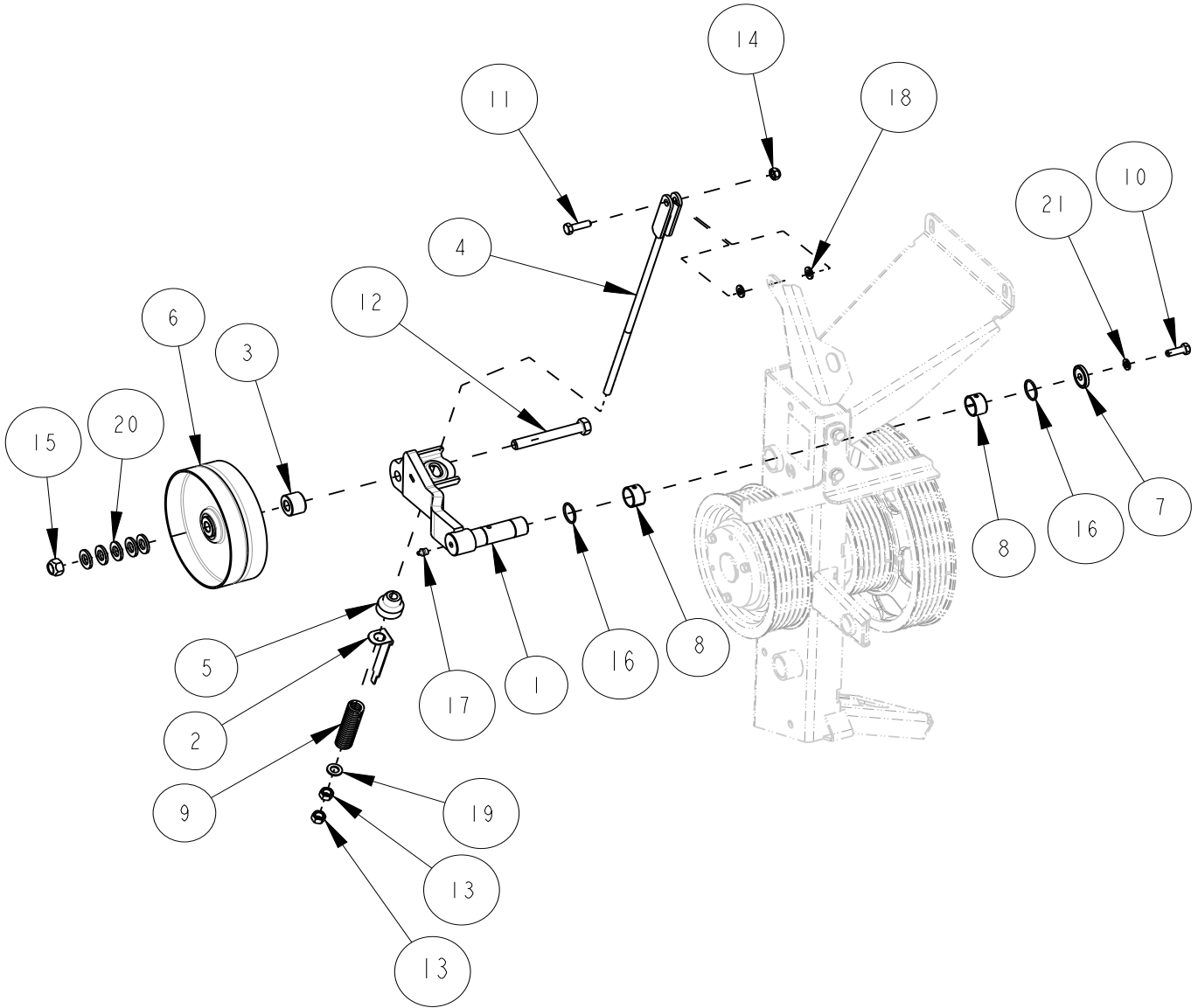
Indicate implement serial number with any parts order

CASE AFX MAV Chopper Jackshaft

Page: 14 - 1
Date:25FEB2022

Serial No Range From:
JS350

Serial No Range To:
PRESENT



CS0145-05

Indicate implement serial number with any parts order

CASE AFX MAV Chopper Jackshaft

Page: 14-2
Date: 25FEB2022

Serial No Range From:
JS350

Serial No Range To:
PRESENT

ITEM NO.	PART NO.	DESCRIPTION	QTY	NOTE
1	CH636B	IDLER ARM UPPER JS - BLACK	1	
2	CH643Z	INDICATOR SPRING UPPER IDLER YZD	1	
3	CH644Z	SPACER 0.656 ID X 1.375 OD X 0.96L YZD	1	
4	CS1005Z	LINK TENSION I9L ROLLED THREAD YZD	1	
5	RPI167	BUSHING PIVOT	1	
6	RP974	PULLEY FLAT 8.0 OD x 2.50 W x .625 ID YZD	1	
7	SC338Z	WASHER SCU IDLER YZD	1	
8	420434	BUSHING DX 30ID x 20L	2	
9	84449503	SPRING-C 4.5 WR 25.75 OD 170L ZN	1	
10	BIIM-1030	BOLT HEX M10X30 C8.8 YZD Iso4014	1	
11	BIIM-1035	BOLT HEX M10X35 C8.8 YZD Iso4014	1	
12	BIIM-16120	BOLT HEX M16X120 C8.8 YZD Iso4014	1	
13	NIIM-12	NUT HEX M12 C8 YZD ISO4032	2	
14	N42M-10	NUT LOCK STL M10 C10 YZD DIN980V	1	
15	N42M-16	NUT LOCK STL M16 C10 YZD DIN980V	1	
16	OIIM-30-025	ORING RD 30mm ID x 2.5mm	2	
17	RPI118	ZERK GREASE STR M10-1.5	1	
18	WIIM-10	WASHER FLAT M10 x 20 x 2.3 YZD	2	
19	WIIM-12	WASHER FLAT M12 x 23.5 x 2.4 YZD	1	
20	WIIM-16	WASHER FLAT M16 x 32 x 3.5 YZD	5	
21	W2IM-10	WASHER HELICAL LOCK M10	1	

CS0145-05

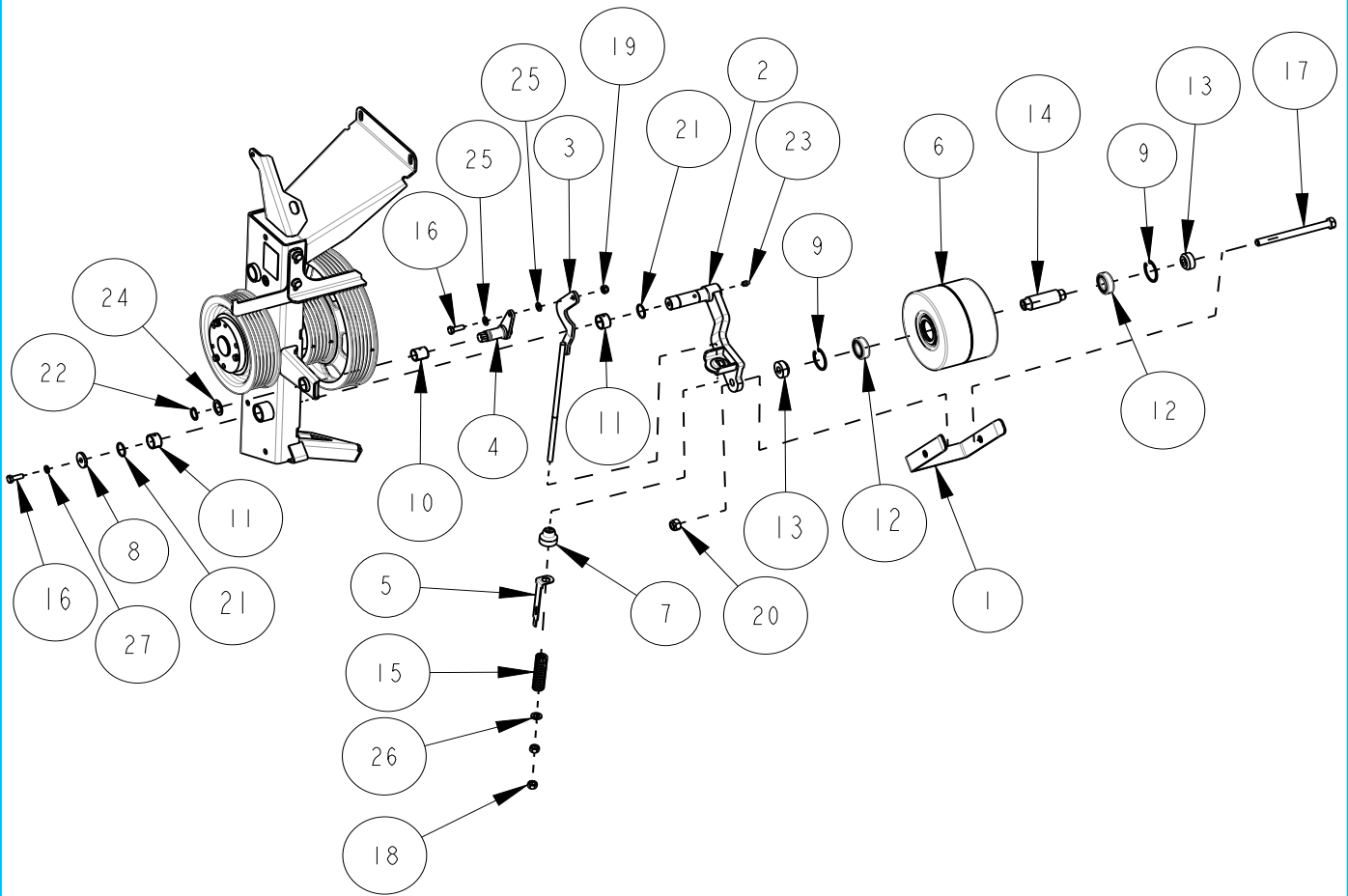
Indicate implement serial number with any parts order

CASE AFX MAV Chopper Jackshaft

Page: 15 - 1
Date: 25FEB2022

Serial No Range From:
JS350

Serial No Range To:
PRESENT



CS0145-05

Indicate implement serial number with any parts order

CASE AFX MAV Chopper Jackshaft

Page: 15-2
Date: 25FEB2022

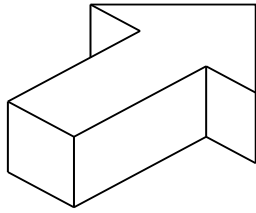
Serial No Range From:
JS350

Serial No Range To:
PRESENT

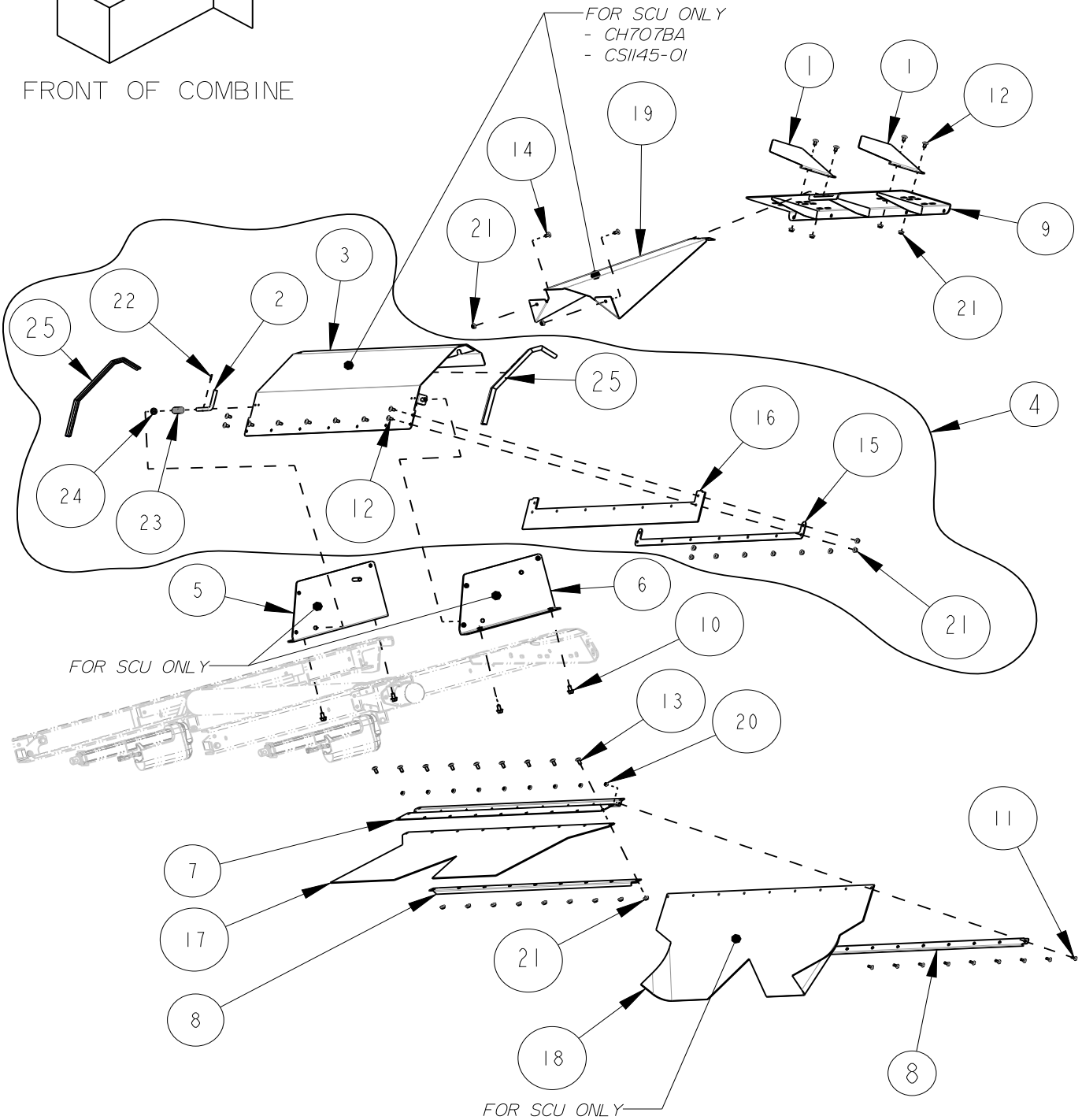
ITEM NO.	PART NO.	DESCRIPTION	QTY	NOTE
1	CH632B	BELT GUIDE - BLACK	1	
2	CH636B	IDLER ARM UPPER JS - BLACK	1	
3	CH665Z	TNSN ROD OFFSET /W 19L AFX YZD	1	
4	CSI029Z	IDLER TENSION PIVOT PIN YZD	1	
5	CSIII9Z	INDICATOR SPRING UPPER IDLER 4.5" YZD	1	
6	RPII33	IDLER 200MM DIA 136MM WIDE	1	
7	RPII67	BUSHING PIVOT	1	
8	SC338Z	WASHER SCU IDLER YZD	1	
9	3700II	CIRCLIP M52 x 2	2	
10	395589	BUSHING DX 25ID x 30L	1	
11	420434	BUSHING DX 30ID x 20L	2	
12	443898	BEARING BALL FLAT 25ID	2	
13	84007680	SPACER IDLER - YZD	2	
14	84221086	SLEEVE FLAT IDER - PLAIN	1	
15	84449503	SPRING-C 4.5 WR 25.75 OD 17OL ZN	1	
16	BIIM-1030	BOLT HEX M10X30 C8.8 YZD Iso4014	2	
17	BIIM-16190	BOLT HEX M16X190 C8.8 YZD Iso4014	1	
18	NIIM-12	NUT HEX M12 C8 YZD ISO4032	2	
19	N42M-10	NUT LOCK STL M10 C10 YZD DIN980V	1	
20	N42M-16	NUT LOCK STL M16 C10 YZD DIN980V	1	
21	OIIM-30-025	ORING RD 30mm ID x 2.5mm	2	
22	Q2IM-25	RING SNAP EXT M25 YZD	1	
23	RPII18	ZERK GREASE STR M10-1.5	1	
24	RPII6	M.B. 1.013 ID X 1.5 OD .045TK	1	
25	WIIM-10	WASHER FLAT M10 x 20 x 2.3 YZD	2	
26	WIIM-12	WASHER FLAT M12 x 23.5 x 2.4 YZD	1	
27	W2IM-10	WASHER HELICAL LOCK M10	1	

CS0145-05

Indicate implement serial number with any parts order



FRONT OF COMBINE



CS0145-05

Indicate implement serial number with any parts order

CASE AFX MAV Chopper

Page: 16 - 2
Date: 22MAR2022

Serial No Range From:
RMCA0001

Serial No Range To:
PRESENT

ITEM NO.	PART NO.	DESCRIPTION	QTY	NOTE
1	CD733B	FIN BEATER - BLACK	2	
2	CD753Z	PIN, CHAFF DOOR - YZD	2	
3	CH707B	HOOD CHAFF PANEL - BLACK	1	NSS - CH707BA
4	CH707BA	ASSY FRT DIVIDER AFX SCU - BLACK	1	INCLUDES ITEM NO. 2, 3, 12, 15, 16, 21, 22, 23, 24, 25
5	CH708BL	BRACKET HOOD MT LT - BLACK	1	
6	CH708BR	BRACKET HOOD MT RT - BLACK	1	
7	CS1095B	SIEVE EXT 55W - BLACK	1	
8	CS113B	STRAP, SIEVE EXTENSION - BLACK	2	
9	CS1120B	EXTENSION PLATE INT CHPR - BLACK	1	
10	B21M-1020	BOLT FLG M10X20 C8.8 YZD Iso8102	4	
11	B31M-0616	BOLT RH M6X16 C8.8 YZD ISO8678 Short Neck	9	
12	B31M-0816	BOLT RH M8X16 C8.8 YZD ISO8678 Short Neck	13	
13	B31M-0820	BOLT RH M8X20 C8.8 YZD ISO8678 Short Neck	9	
14	B38M-0816	BOLT RH ALLEN M8X16 C8.8 YZD DIN11252 No Neck 2		
15	CH715-01	STRAP STRAW HOOD AFX	1	
16	CS1080-01	BELT ROLLER SEAL	1	
17	CS1096-01	BELT SIEVE EXTENSION AFX	1	
18	CS1118-01	BELT SIEVE EXTENSION AFX	1	
19	CS1145-01	DIVIDER STRAW CENTER AFX	1	
20	N21M-06	NUT FLG M6 C8 YZD Iso4161	9	
21	N21M-08	NUT FLG M8 C8 YZD Iso4161	24	
22	P11-0212	PIN ROL .125 x .75 YZD	2	
23	RP971	SPRING, COMPRESSION	2	
24	W11M-12	WASHER FLAT M12 x 23.5 x 2.4 YZD	2	
25	CH718-01	SEAL BULB STRAW CHAFF DIVIDER 55W	1	

NSS = NOT SERVICED SEPARATELY

CS0145-05

Indicate implement serial number with any parts order

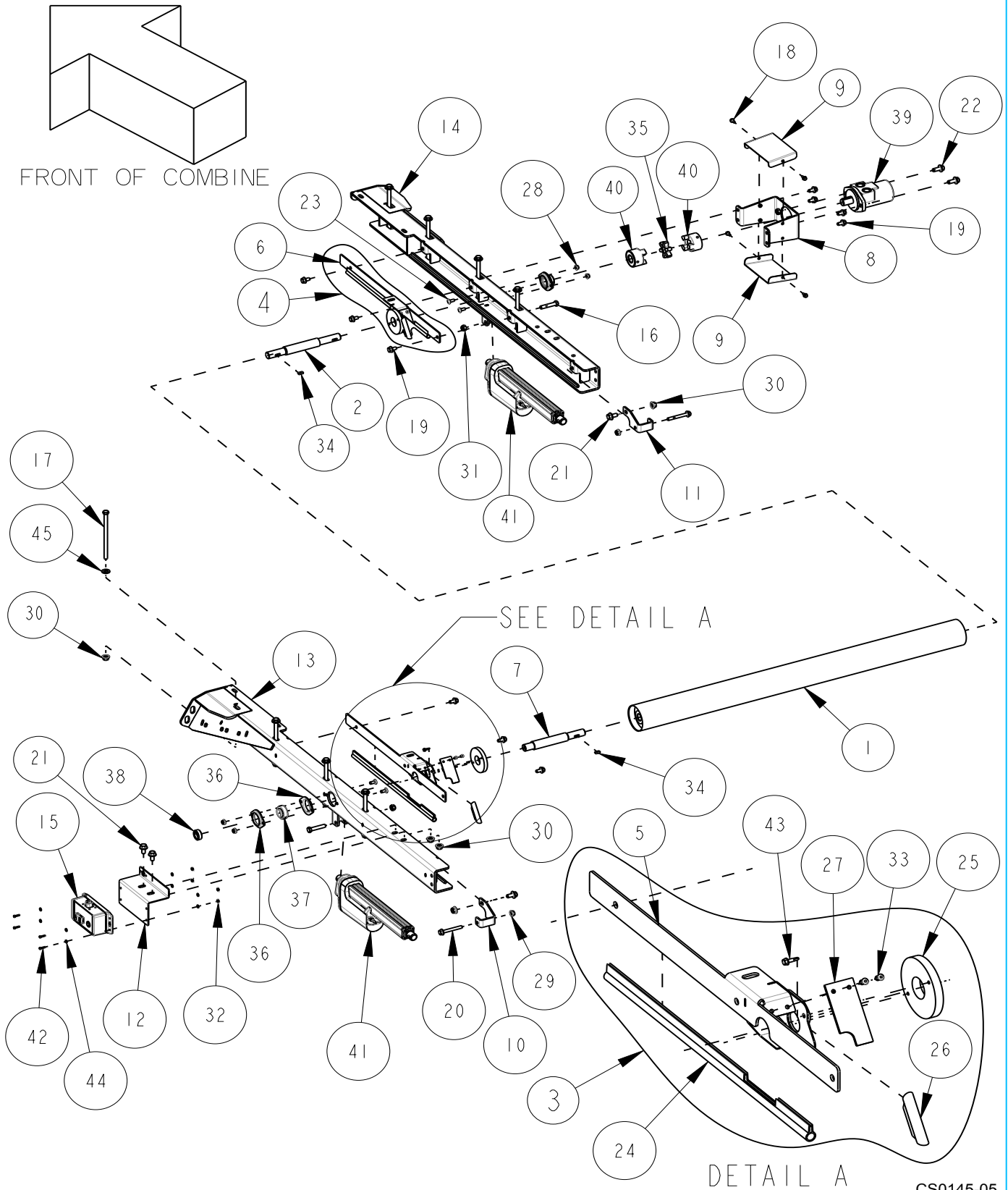


CASE AFX MAV Chopper Collector Interface

Page: 17 - 1
Date: 25FEB2022

Serial No Range From:
RMCA0001

Serial No Range To:
RMCA0099



Indicate implement serial number with any parts order

CASE AFX MAV Chopper Collector Interface

Page: 17-2
Date: 25FEB2022

Serial No Range From:
RMCA0001

Serial No Range To:
RMCA0099

ITEM NO.	PART NO.	DESCRIPTION	QTY	NOTE
1	CH616B	ROLLER CNH WINDROW NARROW - BLACK	1	
2	CH617Z	SHAFT CNH WINDROW ROLLER YZD	1	
3	CH646BAL	COVER ASSY CHOPPER RAIL LT - BLACK	1	
4	CH646BAR	COVER ASSY CHOPPER RAIL RT - BLACK	1	
5	CH646BL	COVER CHOPPER RAIL LT - BLACK	1	
6	CH646BR	COVER CHOPPER RAIL RT - BLACK	1	
7	CH663Z	SHAFT CNH WDRW NON DRV YZD	1	
8	CH667B	BRACKET HYD MOTOR MT ROLLER - BLACK	1	
9	CH668B	COVER HYD MOTOR - BLACK	2	
10	CS110BL	STOP, CHOPPER SLIDE LT - BLACK	1	
11	CS110BR	STOP, CHOPPER SLIDE RT - BLACK	1	
12	CS1154B	SWITCHBOX MT, PLT LDR HNDL SIDE - BLACK	1	
13	CS1159BL	RAIL AFX CHOPPER SLD LT - BLACK	1	
14	CS1159BR	RAIL AFX CHOPPER SLD RT - BLACK	1	
15	RPI217	SWITCHBOX, AFX CHPR ACTUATOR	1	S/S RPI217A
16	BI1M-1260	BOLT HEX M12X60 C8.8 YZD Iso4014	2	
17	BI2M-12200	BOLT HEX M12X200 C10.9 YZD Iso4014	8	
18	B21M-0616	BOLT FLG M6X16 C8.8 YZD Iso8102	4	
19	B21M-1020	BOLT FLG M10X20 C8.8 YZD Iso8102	10	
20	B21M-1080	BOLT FLG M10X80 C8.8 YZD Iso8102	2	
21	B21M-1225	BOLT FLG M12X25 C8.8 YZD Iso8102	4	
22	B21M-1230	BOLT FLG M12X30 C8.8 YZD Iso8102	2	
23	B31M-0820	BOLT RH M8x20 C8.8 YZD ISO8678 Short Neck	4	
24	CH648-01	SEAL CHOPPER SLIDE	2	
25	CH709-01	RING ROLLER SUPPORT	2	
26	CH711-01	SEAL CHOPPER VENT INTERFACE	2	
27	CH713-01	BELT ROLLER SEAL LONG	2	
28	N21M-08	NUT FLG M8 C8 YZD Iso4161	4	
29	N21M-10	NUT FLG M10 C8 YZD Iso4161	2	
30	N21M-12	NUT FLG M12 C8 YZD Iso4161	12	
31	N42M-12	NUT LOCK STL M12 C10 YZD DIN980V	2	
32	N62-08	HEX NUT #8-32 X .343 GR2	4	
33	RO3-08	RIVET SS 0.188 x .375L	4	
34	RPI079	KEY, OVAL 0.25in x 0.25in x 0.75in L Steel Oiled	2	
35	RPI25	SPIDER JAW COUPLING L100s	1	
36	RPI77	FLANGE FMD STL 2B 1.0 BRG	4	
37	RPI78-01	BEARING BALL SPH 1.00 ID ECL AEL	2	
38	RPI79	LOCK COLLAR ECL 1.0 ID	2	
39	RPI80	MOTOR HYD EATON H 5.9 2B lin Shaft	1	
40	RPI81	COUPLING 3 JAW L100s 1.00 ID	2	
41	RP827	ACTUATOR LINEAR 12V 300mm STROKE	2	
42	S51-0812	SCREW PHILIPS 8-32 FLAT HEAD	4	
43	S90M-0519	SCREW SELF DRL TAP M4.8X19 C8.8 YZD	4	S/S RPI327
44	WI1M-05	WASHER FLAT M5 x 11 x 1.4 YZD	8	
45	WI1M-14	WASHER FLAT M14 x 28 x 2.8 YZD	8	

S/S SUPERSEDED BY

CS0145-05

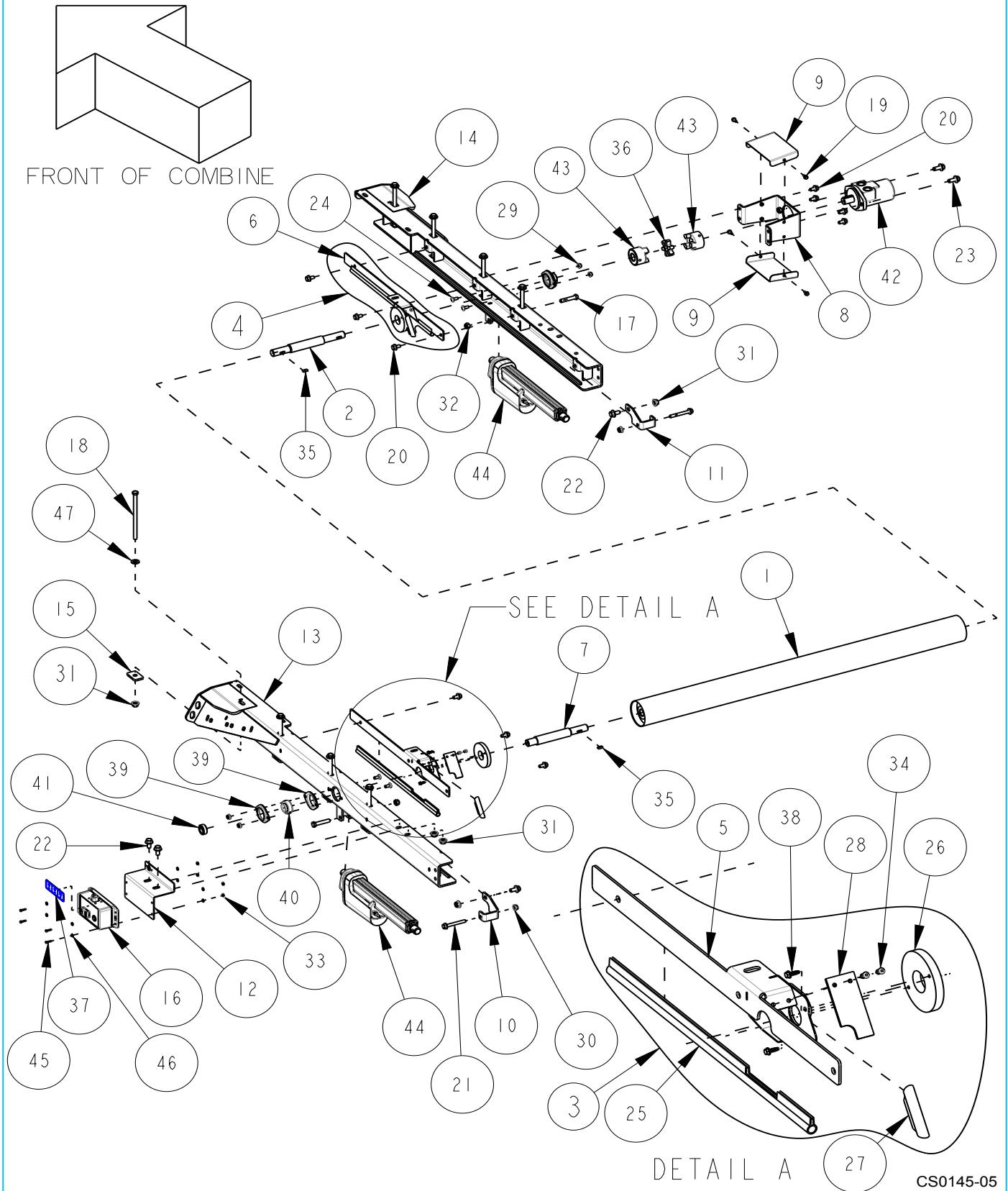
Indicate implement serial number with any parts order

CASE AFX MAV Chopper Collector Interface

Page: 17 - 3
Date: 25FEB2022

Serial No Range From:
RMCA0100

Serial No Range To:
PRESENT



Indicate implement serial number with any parts order

CASE AFX MAV Chopper Collector Interface

Page: 17-4
Date: 25FEB2022

Serial No Range From:
RMCA0100

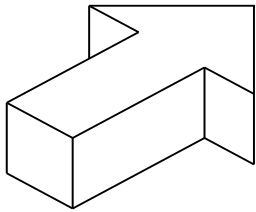
Serial No Range To:
PRESENT

ITEM NO.	PART NO.	DESCRIPTION	QTY	NOTE
1	CH616B	ROLLER CNH WINDROW NARROW - BLACK	1	
2	CH617Z	SHAFT CNH WINDROW ROLLER YZD	1	
3	CH646BAL	COVER ASSY CHOPPER RAIL LT - BLACK	1	
4	CH646BAR	COVER ASSY CHOPPER RAIL RT - BLACK	1	
5	CH646BL	COVER CHOPPER RAIL LT - BLACK	1	
6	CH646BR	COVER CHOPPER RAIL RT - BLACK	1	
7	CH663Z	SHAFT CNH WDRW NON DRV YZD	1	
8	CH667B	BRACKET HYD MOTOR MT ROLLER - BLACK	1	
9	CH668B	COVER HYD MOTOR - BLACK	2	
10	CS1110BL	STOP, CHOPPER SLIDE LT - BLACK	1	
11	CS1110BR	STOP, CHOPPER SLIDE RT - BLACK	1	
12	CS1154B	SWITCHBOX MT, PLT LDR HNDL SIDE - BLACK	1	
13	CS1159BL	RAIL AFX CHOPPER SLD LT - BLACK	1	
14	CS1159BR	RAIL AFX CHOPPER SLD RT - BLACK	1	
15	CS1160Z	WASHER YZD - AFX RAIL ASSY	8	
16	RPI217A	SWITCHBOX CHPR ACTUATOR AFX W/ DECAL	1	C/W RPI265
17	BI1M-1260	BOLT HEX M12X60 C8.8 YZD Iso4014	2	
18	BI2M-12200	BOLT HEX M12X200 C10.9 YZD Iso4014	8	
19	B21M-0616	BOLT FLG M6X16 C8.8 YZD Iso8102	4	
20	B21M-1020	BOLT FLG M10X20 C8.8 YZD Iso8102	10	
21	B21M-1080	BOLT FLG M10X80 C8.8 YZD Iso8102	2	
22	B21M-1225	BOLT FLG M12X25 C8.8 YZD Iso8102	4	
23	B21M-1230	BOLT FLG M12X30 C8.8 YZD Iso8102	2	
24	B31M-0820	BOLT RH M8x20 C8.8 YZD ISO8678 Short Neck	4	
25	CH648-01	SEAL CHOPPER SLIDE	2	
26	CH709-01	RING ROLLER SUPPORT	2	
27	CH711-01	SEAL CHOPPER VENT INTERFACE	2	
28	CH713-01	BELT ROLLER SEAL LONG	2	
29	N21M-08	NUT FLG M8 C8 YZD Iso4161	4	
30	N21M-10	NUT FLG M10 C8 YZD Iso4161	2	
31	N21M-12	NUT FLG M12 C8 YZD Iso4161	12	
32	N42M-12	NUT LOCK STL M12 C10 YZD DIN980V	2	
33	N62-08	HEX NUT #8-32 X .343 GR2	4	
34	RO3-08	RIVET SS 0.188 x .375L	4	
35	RPI079	KEY, OVAL 0.25in x 0.25in x 0.75in L Steel Oiled	2	
36	RPI25	SPIDER JAW COUPLING L100s	1	
37	RPI265	ACTUATOR LADDER SWITCHBOX DECAL	1	
38	RPI327	SCREW #12 x 0.625 HEX HEAD PLASTIC	4	
39	RPI77	FLANGE FMD STL 2B 1.0 BRG	4	
40	RPI78-01	BEARING BALL SPH 1.00 ID ECL AEL	2	
41	RPI79	LOCK COLLAR ECL 1.0 ID	2	
42	RPI80	MOTOR HYD EATON H 5.9 2B lin Shaft	1	
43	RPI81	COUPLING 3 JAW L100s 1.00 ID	2	
44	RP827	ACTUATOR LINEAR 12V 300mm STROKE	2	
45	S51-0812	SCREW PHILIPS 8-32 FLAT HEAD	4	
46	WI1M-05	WASHER FLAT M5 x 11 x 1.4 YZD	8	
47	WI1M-14	WASHER FLAT M14 x 28 x 2.8 YZD	8	

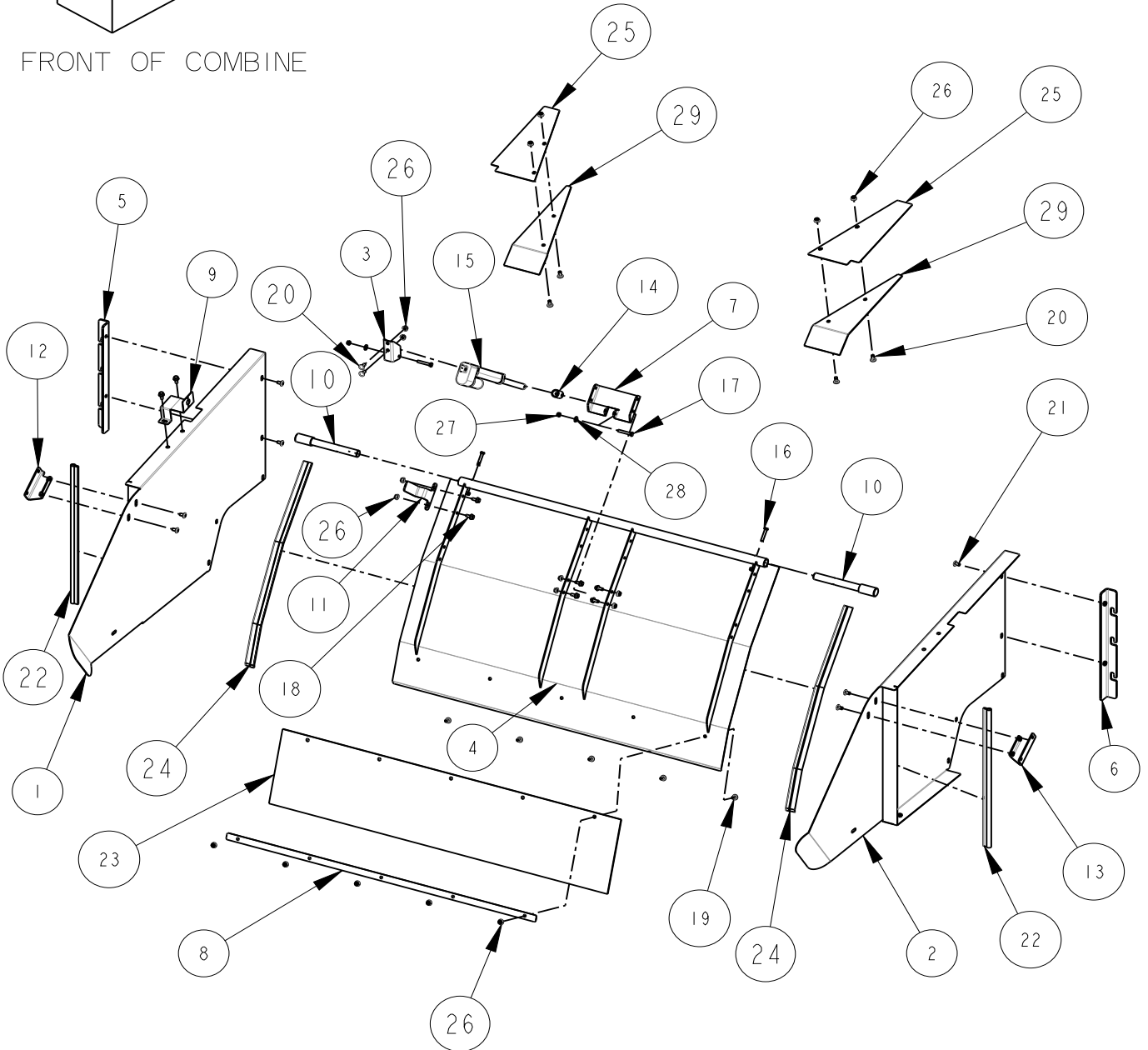
C/W = COMPLETE WITH

CS0145-05

Indicate implement serial number with any parts order



FRONT OF COMBINE



CS0145-05

Indicate implement serial number with any parts order

CASE AFX MAV Chopper

Page: 18 - 2
Date: 16JUL2021

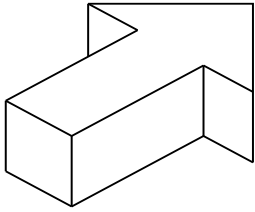
Serial No Range From:
RMCA0001

Serial No Range To:
PRESENT

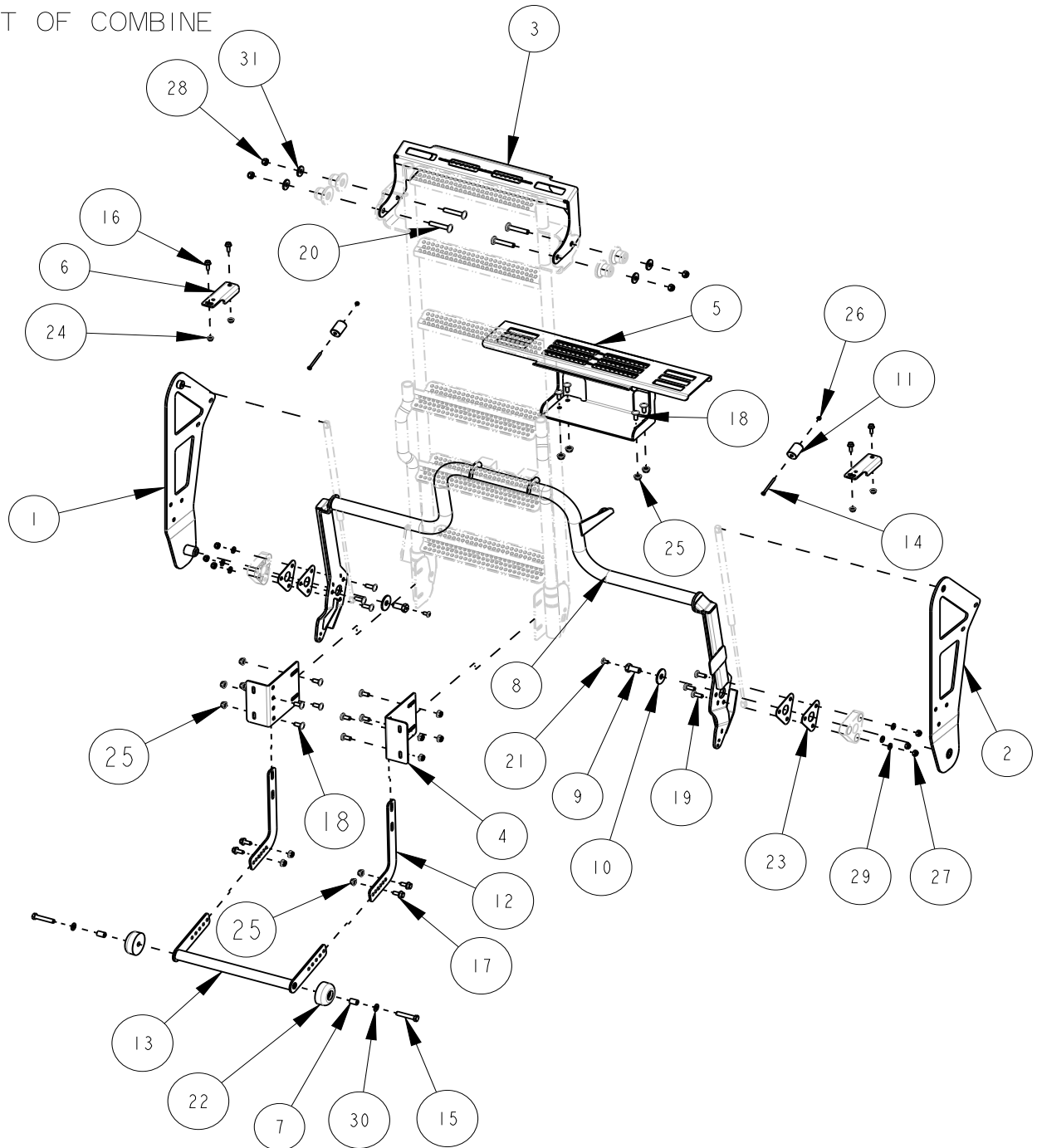
ITEM NO.	PART NO.	DESCRIPTION	QTY	NOTE
1	CH649BL	SKIN LADDER SDWALL PANEL LT - BLACK	1	
2	CH649BR	SKIN LADDER SDWALL PANEL RT - BLACK	1	
3	CS1012Z	CLEVIS STRAW DOOR YZD	1	
4	CS1082B	DOOR AFX STRAW - BLACK	1	
5	CS1085BL	BRACKET FRONT SKIN MT LT - BLACK	1	
6	CS1085BR	BRACKET FRONT SKIN MT RT - BLACK	1	
7	CS603B	BRKT ACTR MT - BLACK	1	
8	CS844B	STRAP AFX STRAW DOOR - BLACK	1	
9	CS851B	BRKT DOOR PROX SENSOR - BLACK	1	
10	CS937Z	PIN AFX STRAW DOOR	2	
11	CS943B	TRGT STRW DOOR PROX - BLACK	1	
12	CS944BL	BRACKET TOP SKIN MT LT - BLACK	1	
13	CS944BR	BRACKET TOP SKIN MT RT - BLACK	1	
14	CS960Z	STOP DOOR ACTUATOR YZD	1	
15	RP940	ACTUATOR	1	
16	BIIM-0845	BOLT HEX M8X45 C8.8 YZD Iso4014	2	
17	BIIM-0850	BOLT HEX M8X50 C8.8 YZD Iso4014	2	
18	B2IM-0820	BOLT FLG M8X20 C8.8 YZD Iso8102	8	
19	B3IM-0816	BOLT RH M8x16 C8.8 YZD ISO8678 Short Neck	5	
20	B3IM-0820	BOLT RH M8x20 C8.8 YZD ISO8678 Short Neck	6	
21	B38M-0816	BOLT RH ALLEN M8x16 C8.8 YZD DIN11252 No Neck	8	
22	CS1059-01	SEAL BULB AFX LADDER SKIN	2	
23	CS1083-01	BELTING AFX STRAW DOOR	1	
24	CS1153-01	SEAL WIPER 30.938"	2	
25	CS468-01	FILLER PLATE COMBINE ROOF	2	
26	N2IM-08	NUT FLG M8 C8 YZD Iso4161	17	
27	N42M-08	NUT LOCK STL M8 C10 YZD DIN980V	4	
28	WIIM-08	WASHER FLAT M8 x 18.8 x 2.3 YZD	2	
29	CS669-01	BELT ROOF SEAL	2	

CS0145-05

Indicate implement serial number with any parts order



FRONT OF COMBINE



CS0145-05

Indicate implement serial number with any parts order

CASE AFX MAV Chopper

Page: 19 - 2
Date: 16JUL2021

Serial No Range From:
RMCA0001

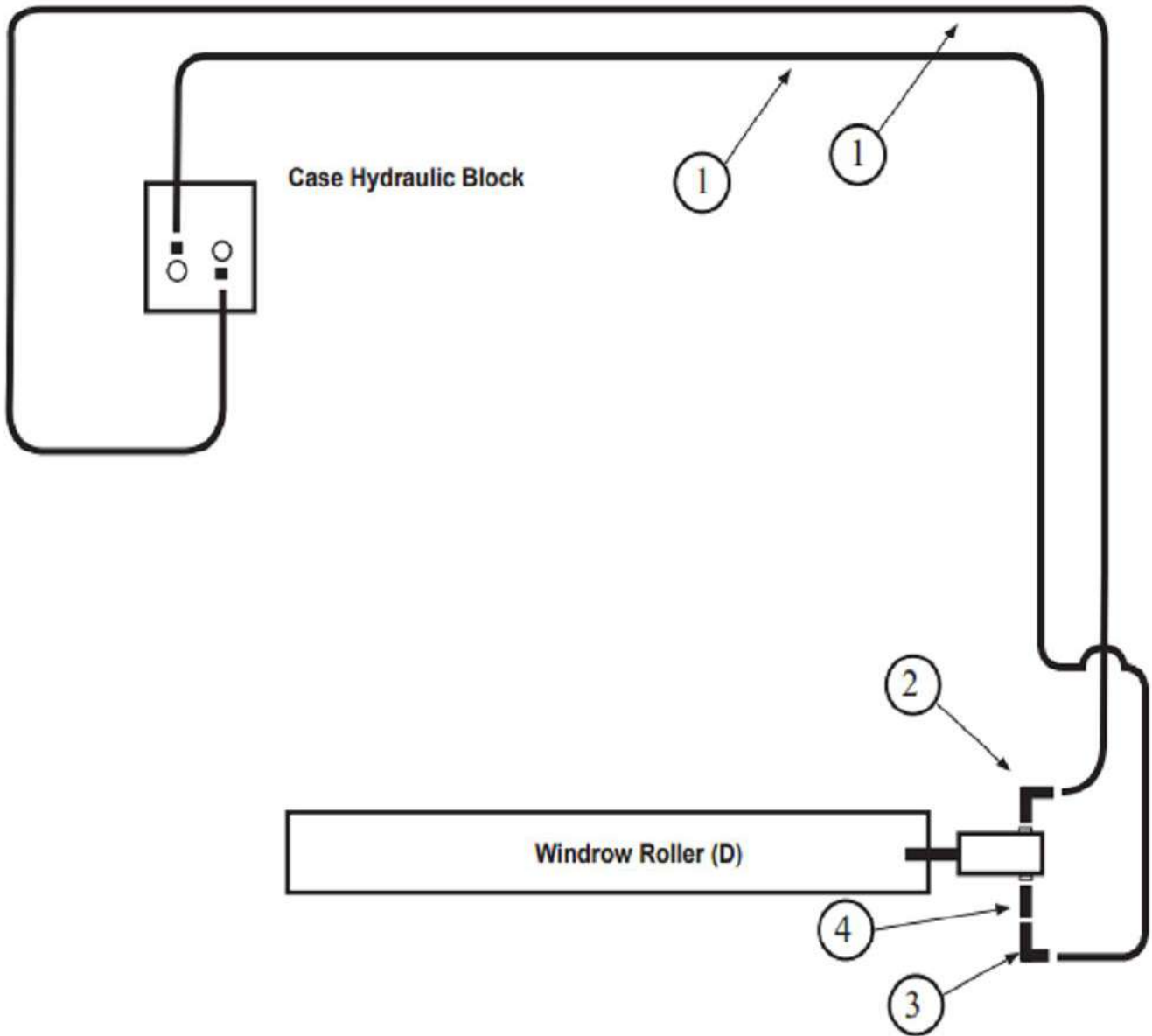
Serial No Range To:
PRESENT

ITEM NO.	PART NO.	DESCRIPTION	QTY	NOTE
1	CS1008BL	MOUNT LDR LT - BLACK	1	
2	CS1008BR	MOUNT LDR RT - BLACK	1	
3	CS1028B	BRACKET LDR STEP EXT - BLACK	1	
4	CS1084B	BRKT LDR HNDL MT - BLACK	2	
5	CS1086B	STEP, TOP LADDER AFX - BLACK	1	
6	CS836B	RELOCATE BRKT, LADDER RAIL - BLACK	2	
7	CS856Z	SPACER ROLLER - YZD	2	
8	CS927B	ARM LDR SUPPORT - BLACK	1	
9	CS934-01	BOLT LADDER FRAME	2	
10	CS935Z	WASHER, LDR FRAME - YZD	2	
11	CS948Z	SPACER, LDR BUMPER - YZD	2	
12	CS949B	PLATE, LDR HANDLE - BLACK	2	
13	CS950B	HANDLE, LADDER - BLACK	1	
14	BI1M-0670	BOLT HEX M6X70 C8.8 YZD Iso4014	2	
15	BI2M-1265	BOLT HEX M12X65 C10.9 YZD Iso4014	2	
16	B21M-0825	BOLT FLG M8X25 C8.8 YZD Iso8102	4	
17	B21M-1025	BOLT FLG M10X25 C8.8 YZD Iso8102	4	
18	B31M-1025	BOLT RH M10X25 C8.8 YZD ISO8678 Short Neck	12	
19	B31M-1030	BOLT RH M10X30 C8.8 YZD ISO8678 Short Neck	6	
20	B31M-1270	BOLT RH M12X70 C8.8 YZD ISO8678 Short Neck	4	
21	B38M-0816	BOLT RH ALLEN M8x16 C8.8 YZD DIN11252 No Neck	2	
22	CS855-01	ROLLER RUBBER LADDER	2	
23	CS976-01	LADDER SHIM PLATE	4	
24	N21M-08	NUT FLG M8 C8 YZD Iso4161	4	
25	N21M-10	NUT FLG M10 C8 YZD Iso4161	16	
26	N42M-06	NUT LOCK STL M6 C10 YZD DIN980V	2	
27	N42M-10	NUT LOCK STL M10 C10 YZD DIN980V	6	
28	N42M-12	NUT LOCK STL M12 C10 YZD DIN980V	4	
29	WI1M-10	WASHER FLAT M10 x 20 x 2.3 YZD	6	
30	WI1M-12	WASHER FLAT M12 x 23.5 x 2.4 YZD	2	
31	WI2M-12	WASHER FLAT M12 x 34 x 3.5 YZD	4	
	CS965BA	SHOCK COMPRESSOR ASSEMBLY - BLACK	1	FOR REMOVAL AND INSTALLATION OF SHOCK COMPRESSOR

CS0145-05

Indicate implement serial number with any parts order

SCU & Windrow Hydraulic Schematic



CS0145-05

Indicate implement serial number with any parts order

CASE AFX MAV CHOPPER

Page: 20 - 2
Date: 23JUN2022

Serial No Range From:
RMCA0001

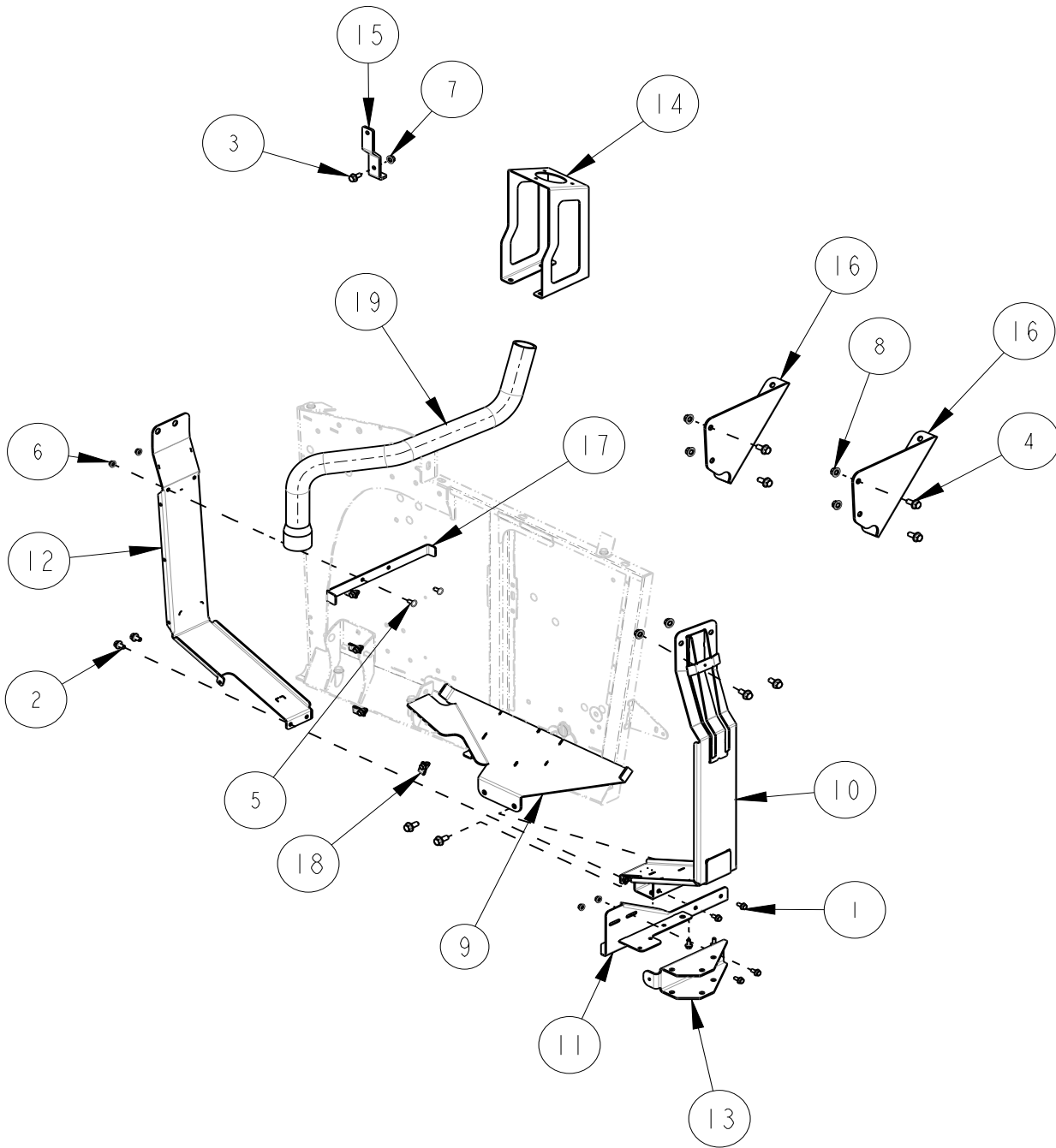
Serial No Range To:
PRESENT

ITEM NO.	PART NO.	DESCRIPTION	QTY	NOTE
1	H1145	HYD, HOSE 0.5" X 210"L	2	
2	H35-1010FS	FIT HYD 90DEG 10 MORB-10 MORFS	1	
3	H38-1010FFX	FIT HYD 90DEG 10MORFS-10 FORFX	1	
4	H25-1010MF	FIT HYD STR 10 MORB-10 MORFS	1	

CS0145-05

Indicate implement serial number with any parts order

DEF Tank Components Not Required for
50 Series Machines



CS0145-05

Indicate implement serial number with any parts order

CASE AFX MAV Chopper

Page: 21 - 2
Date: 16JUL2021

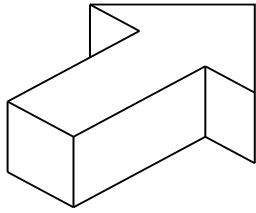
Serial No Range From:
RMCA0001

Serial No Range To:
PRESENT

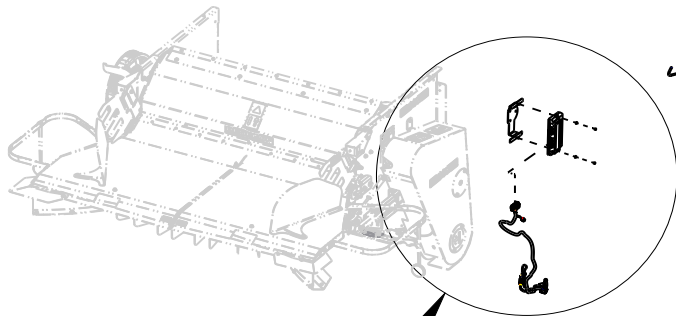
ITEM NO.	PART NO.	DESCRIPTION	QTY	NOTE
1	B21M-0820	BOLT FLG M8X20 C8.8 YZD Iso8102	10	
2	B21M-1020	BOLT FLG M10X20 C8.8 YZD Iso8102	2	
3	B21M-1025	BOLT FLG M10X25 C8.8 YZD Iso8102	1	
4	B21M-1230	BOLT FLG M12X30 C8.8 YZD Iso8102	10	
5	B31M-0820	BOLT RH M8x20 C8.8 YZD ISO8678 Short Neck	2	
6	N21M-08	NUT FLG M8 C8 YZD Iso4161	8	
7	N21M-10	NUT FLG M10 C8 YZD Iso4161	1	
8	N21M-12	NUT FLG M12 C8 YZD Iso4161	10	
9	CS826B	BOTTOM DEF MOUNT - BLACK	1	
10	CS829B	BRACKET REAR DEF HANGER - BLACK	1	
11	CS831B	ARM PANEL LATCH - BLACK	1	
12	CS890B	HANGER BRKT FRT DEF - BLACK	1	
13	CS786B	BRACKET SHROUD LATCH - BLACK	1	
14	CS805B	BRACKET DEF FILL TUBE MAV - BLACK	1	
15	CS835B	BRACKET DEF VENT MT - BLACK	1	
16	CS862B	BRACKET 30S AFX AIR TNK MT - BLACK	2	
17	CS891B	BRACKET TOP DEF GUIDE - BLACK	1	
18	RP220	P-CLIP 2W .375 .75H INSULATED	4	
19	RP936	HOSE FORMED DEF FILL LINE	1	
	RP925	HARNESS, ELECTRIC 3W X 7FT AMP - 240S	1	DEF HARNESS EXT, FIELD INSTALL

CS0145-05

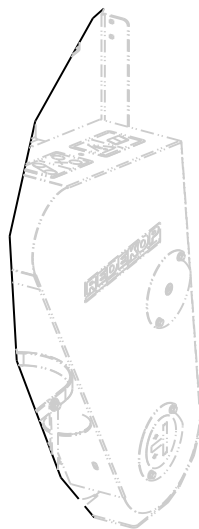
Indicate implement serial number with any parts order



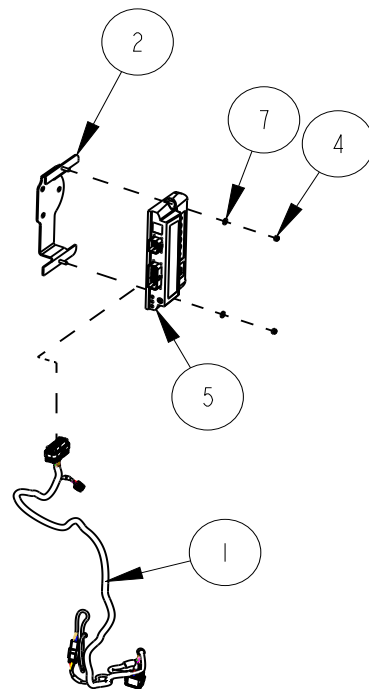
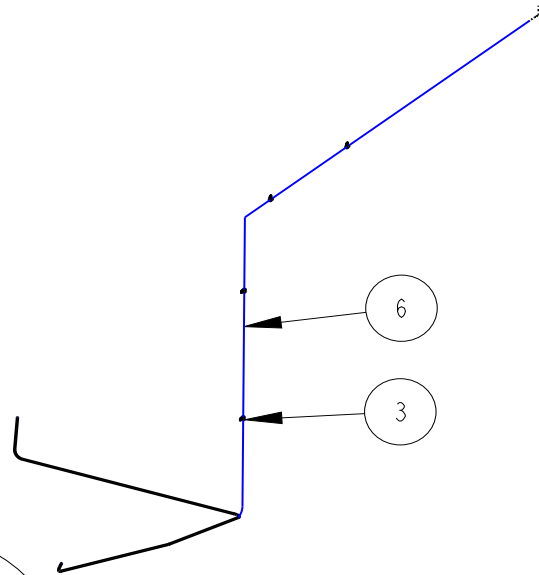
FRONT OF COMBINE



DETAIL A



DETAIL A



CASE AFX SCU - MAV Chopper ECU Control

Page: 22 - 2
Date: 22MAR2022

Serial No Range From:
RMCA0001

Serial No Range To:
RMCA0099

ITEM NO.	PART NO.	DESCRIPTION	QTY	NOTE
1	RPI123	HARNESS, MAIN ECU	1	
2	SC378B	BRACKET ECU AFX - BLACK	1	S/S CS1167B
3	H99-08	TUBE STRAP 0.5 OD, .375 HOLE ZN RUBBER	4	
4	N42M-06	NUT LOCK STL M6 CIO YZD DIN980V	2	
5	RPI021	ECU, SCU TAILBOARD CONTROL	1	
6	RPI022	HARNESS, ECU POWER, CAB	1	
7	WIIM-06	WASHER FLAT M6 x 13 x 1.75 YZD	2	
	RPI061	HARNESS, TAILBOARD ACTUATOR	1	
	RPI216	HARNESS, CHOPPER SLIDE ACTUATOR	1	

S/S = SUPERSEDED BY

CS0145-05

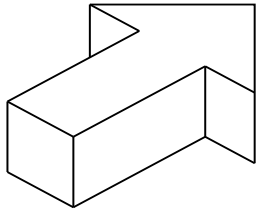
Indicate implement serial number with any parts order

CASE AFX SCU - MAV Chopper ECU Control

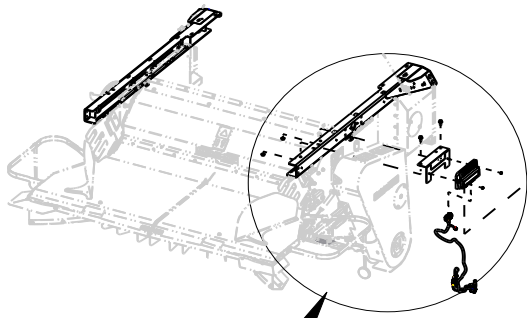
Page: 22 - 3
Date: 22MAR2022

Serial No Range From:
RMCA0100

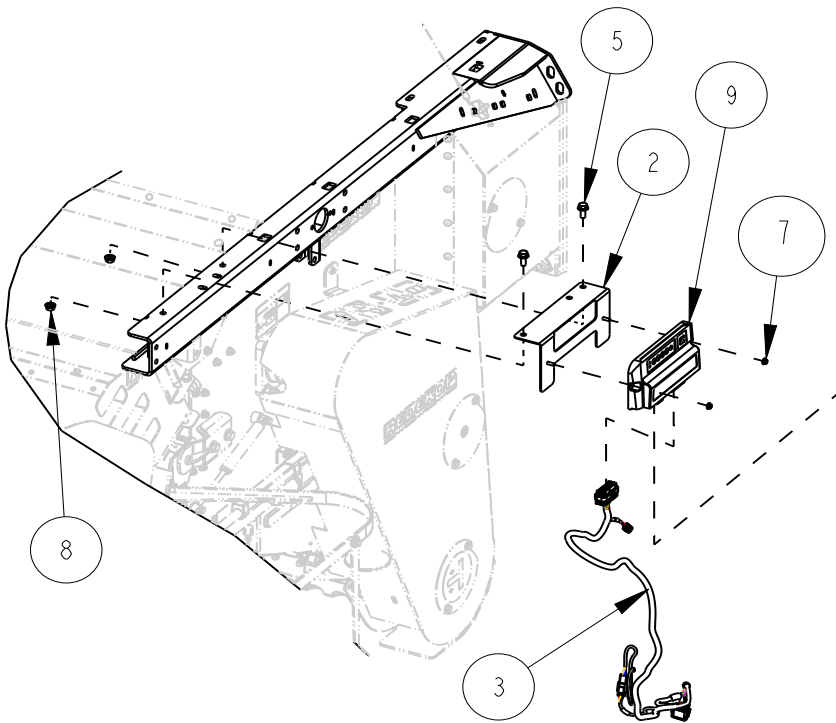
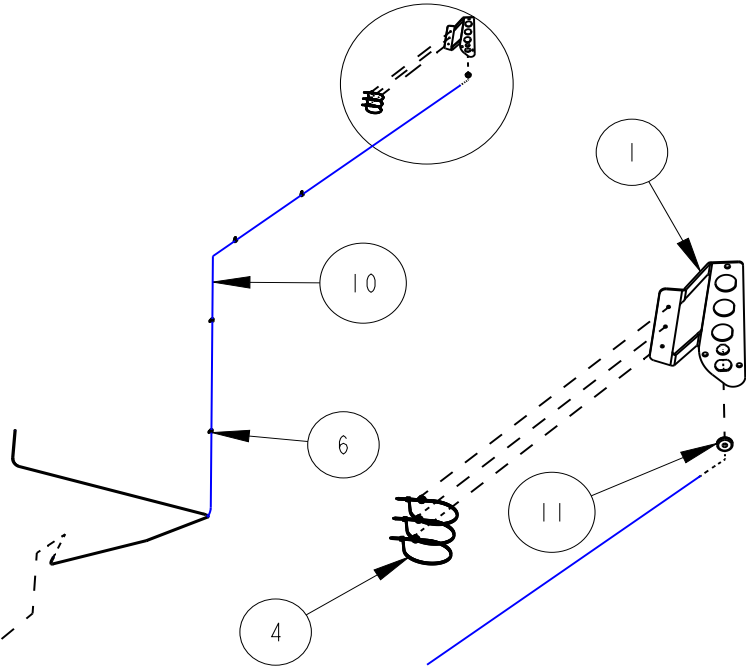
Serial No Range To:
PRESENT



FRONT OF COMBINE



DETAIL A



DETAIL A

CS0145-05

Indicate implement serial number with any parts order

CASE AFX SCU - MAV Chopper ECU Control

Page: 22 - 4
Date: 22MAR2022

Serial No Range From:
RMCA0100

Serial No Range To:
PRESENT

ITEM NO.	PART NO.	DESCRIPTION	QTY	NOTE
1	CH762B	BULKHEAD CR CAB - BLACK	1	
2	CS1167B	ECU BRACKET CASE CR - BLACK	1	
3	RPI123	HARNESS, MAIN ECU	1	
4	87741307	CABLE TIE, FIR TREE	3	
5	B21M-1025	BOLT FLG M10X25 C8.8 YZD Iso8102	2	
6	H99-08	TUBE STRAP 0.5 OD, .375 HOLE ZN RUBBER	4	
7	N21M-06	NUT FLG M6 C8 YZD Iso4161	9	
8	N21M-10	NUT FLG M10 C8 YZD Iso4161	6	
9	RPI021	ECU, SCU TAILBOARD CONTROL	1	
10	RPI022	HARNESS, ECU POWER, CAB	1	
11	RPI322	SILICONE RBR HIGH TEMP 1" OD, 3.8" ID, 3/16"	1	
	RPI061	HARNESS, TAILBOARD ACTUATOR	1	
	RPI216	HARNESS, CHOPPER SLIDE ACTUATOR	1	

CS0145-05

Indicate implement serial number with any parts order

REDEKOP MANUFACTURING

1.866.REDEKOP (1.866.733.3567)

Saskatoon, Saskatchewan Canada S7K 3J7
info@redkopmfg.com
www.redkopmfg.com

For additional and the most up to date Manuals:



EQR002

REDEKOP™

REDEKOP™