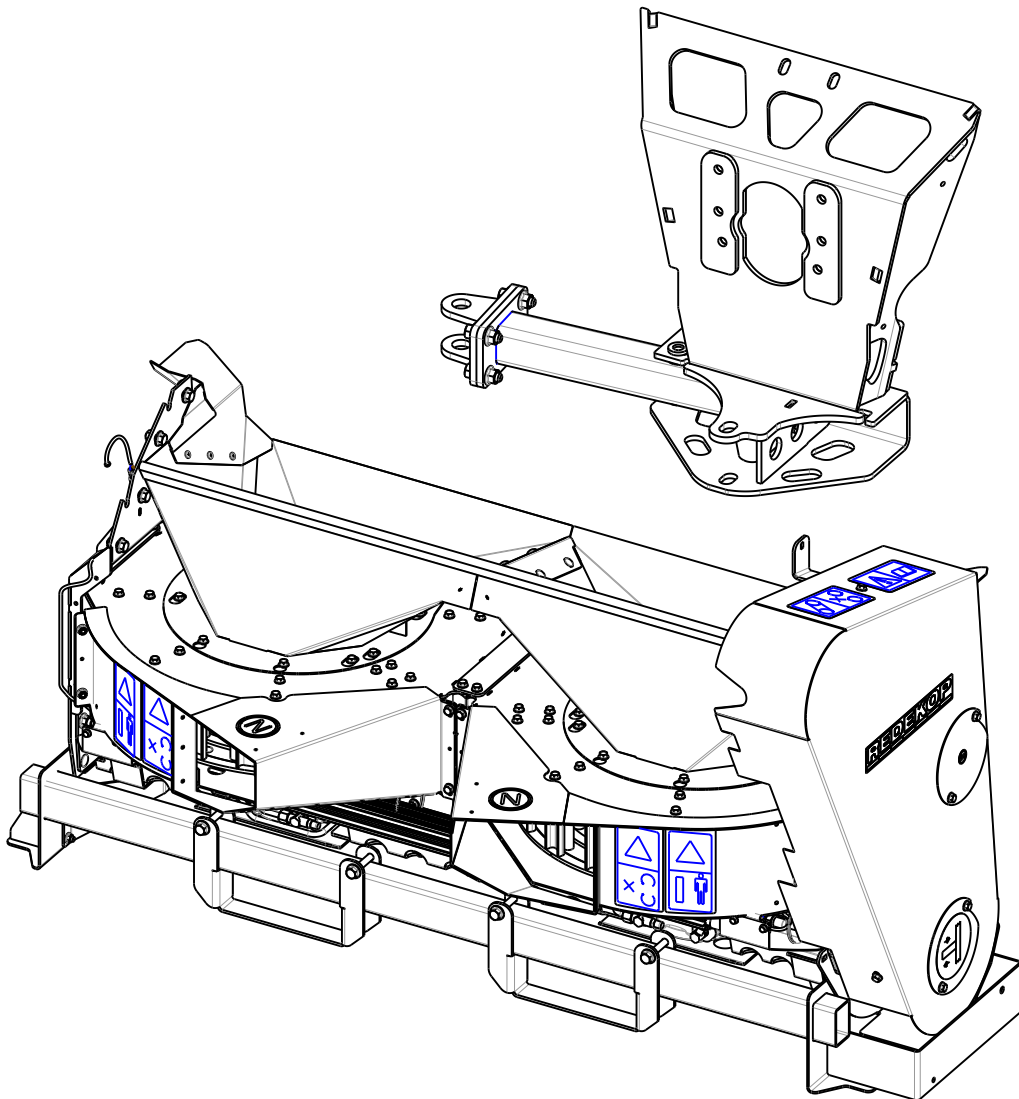


CASE AFX SN# SCCA0001 to Present  
- Seed Control Unit Parts Manual

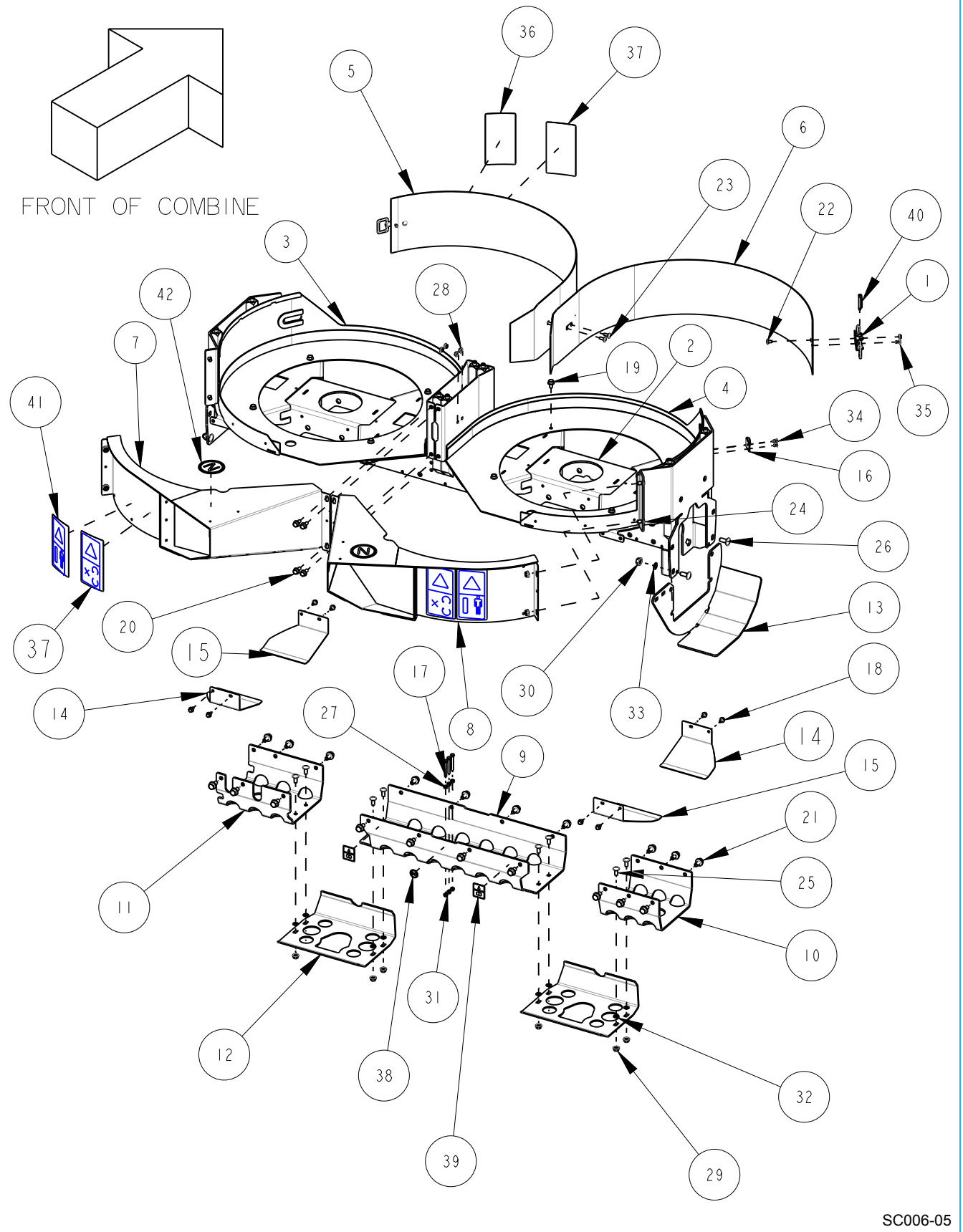


CASE AFX Seed Control Unit

Page: 1 - 1  
Date: 20JULY2021

Serial No Range From:  
SCCA0001

Serial No Range To:  
PRESENT



SC006-05

Indicate implement serial number with any parts order

CASE AFX Seed Control Unit

Page: 1 - 2  
Date:20JULY2021

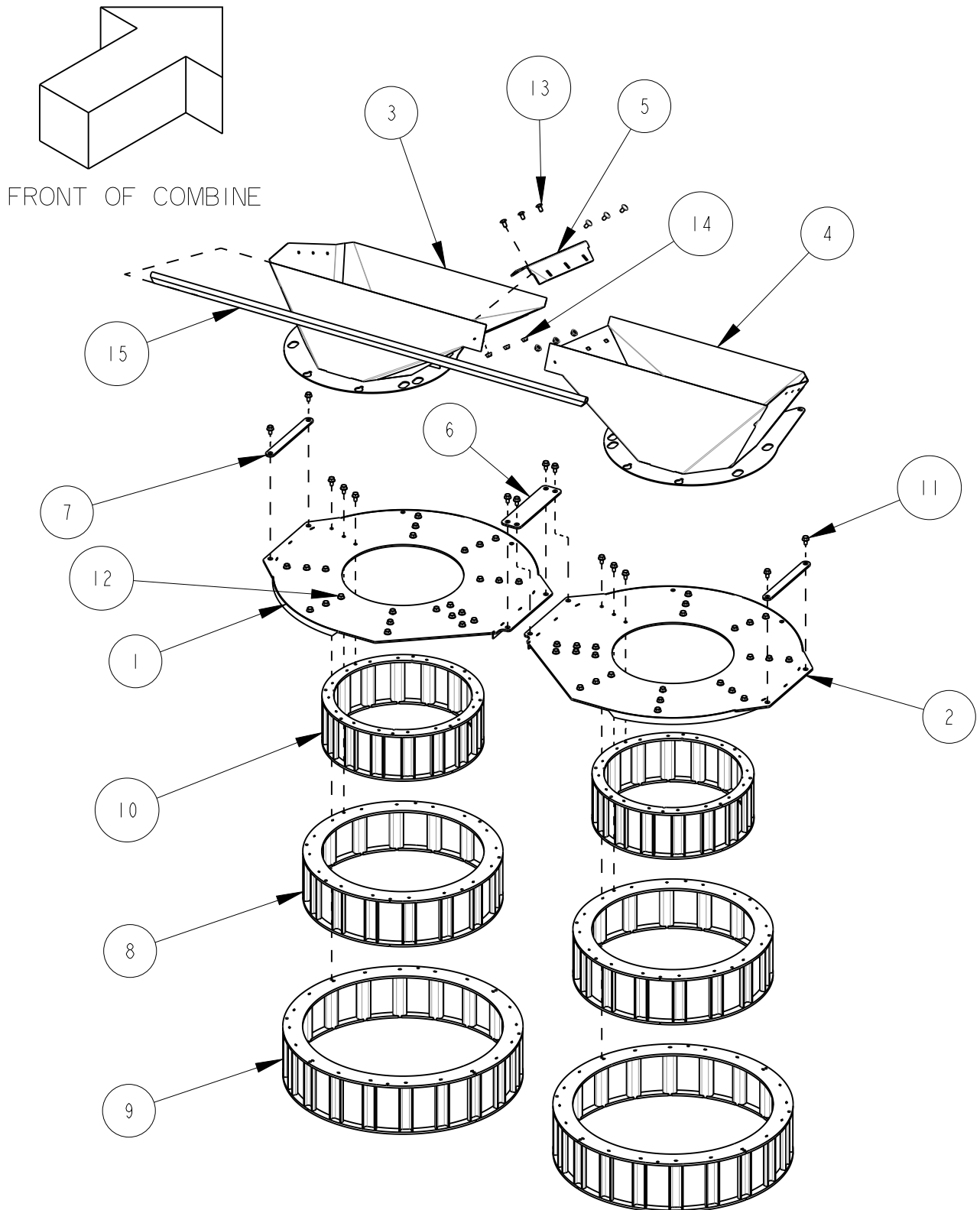
Serial No Range From:  
SCCA0001

Serial No Range To:  
PRESENT

ITEM NO.	PART NO.	DESCRIPTION	QTY	NOTE
1	RPI073	LATCH, ADJUSTABLE	2	INCLUDES LATCH CATCH
2	SCI76B	BEAM, 175W SCU - BLACK	1	
3	SCI78BL	HOUSING BTM LT SC - BLACK	1	
4	SCI78BR	HOUSING BTM RT SC - BLACK	1	
5	SCI79BAL	LT COVER MILL INSP w/ DECAL -BLACK	1	
6	SCI79BAR	RT COVER MILL INSP w/ DECAL - BLACK	1	
7	SCI80BAL	OUTLET LT SCU w/ DECALS - BLACK	1	
8	SCI80BAR	OUTLET RT SCU w/ DECALS - BLACK	1	
9	SC357BA	COVER, TUBE BTM MID W/ DECALS - BLACK	1	
10	SC358B	COVER, TUBE BTM DRIVE - BLACK	1	
11	SC359B	TUBE BTM COVER PUMP END - BLACK	1	
12	SC366B	SCU GBX SKID PLATE - BLACK	2	
13	SC430B	GUARD SCU FR DRIVE RT - BLACK	1	
14	SC483BL	GUARD NARROW SCU HARNESS LT - BLACK	2	
15	SC483BR	GUARD NARROW SCU HARNESS RT - BLACK	2	
16	I590A47-4	LATCH CATCH	2	
17	BIIM-0650	BOLT HEX M6X50 C8.8 YZD Iso4014	3	SPARE SHEAR BOLT
18	B2IM-0612	BOLT FLG M6X12 C8.8 YZD Iso8102	8	
19	B2IM-0816	BOLT FLG M8X16 C8.8 YZD Iso8102	8	
20	B2IM-0820	BOLT FLG M8X20 C8.8 YZD Iso8102	4	
21	B2IM-1020	BOLT FLG M10X20 C8.8 YZD Iso8102	20	
22	B3IM-0612	BOLT RH M6X12 C8.8 YZD ISO8678 Short Neck	2	
23	B3IM-0616	BOLT RH M6X16 C8.8 YZD ISO8678 Short Neck	4	
24	B3IM-0816	BOLT RH M8x16 C8.8 YZD ISO8678 Short Neck	4	
25	B3IM-0820	BOLT RH M8x20 C8.8 YZD ISO8678 Short Neck	8	
26	B3IM-1025	BOLT RH M10X25 C8.8 YZD ISO8678 Short Neck	4	
27	NIIM-06	NUT HEX M6 C8 YZD ISO4032	3	
28	N2IM-06	NUT FLG M6 C8 YZD Iso4161	6	
29	N2IM-08	NUT FLG M8 C8 YZD Iso4161	12	
30	N2IM-10	NUT FLG M10 C8 YZD Iso4161	4	
31	N4IM-06	NUT LOCK STL M6 C8 YZD DIN980V	3	
32	N63M-08	NUT PUSH M8 YZD	8	
33	N63M-10	NUT PUSH M10 BLACK PH	4	
34	RO3-07A	RIVET ALUM 0.188 x .25L	6	
35	RO3-08H	RIVET INCH GENERIC	2	
36	RPI086	DECAL SAFETY KICKBACK HAZARD	1	
37	RPI089	DECAL SAFETY HAND CUT HAZARD	2	
38	RPI092	DECAL GREASE 50 HR	1	
39	RPI093	DECAL OIL SPEC CHECK MANUAL	2	
40	RPI094	PIN LYNCH M6 x 45L w/LANYARD ZN	2	
41	RP872	DECAL SAFETY PROJECTILE HAZARD	1	
42	RP963	DECAL "N"	1	

SC006-05

Indicate implement serial number with any parts order



CASE AFX Seed Control Unit

Page: 2 - 2  
Date: 17FEB2023

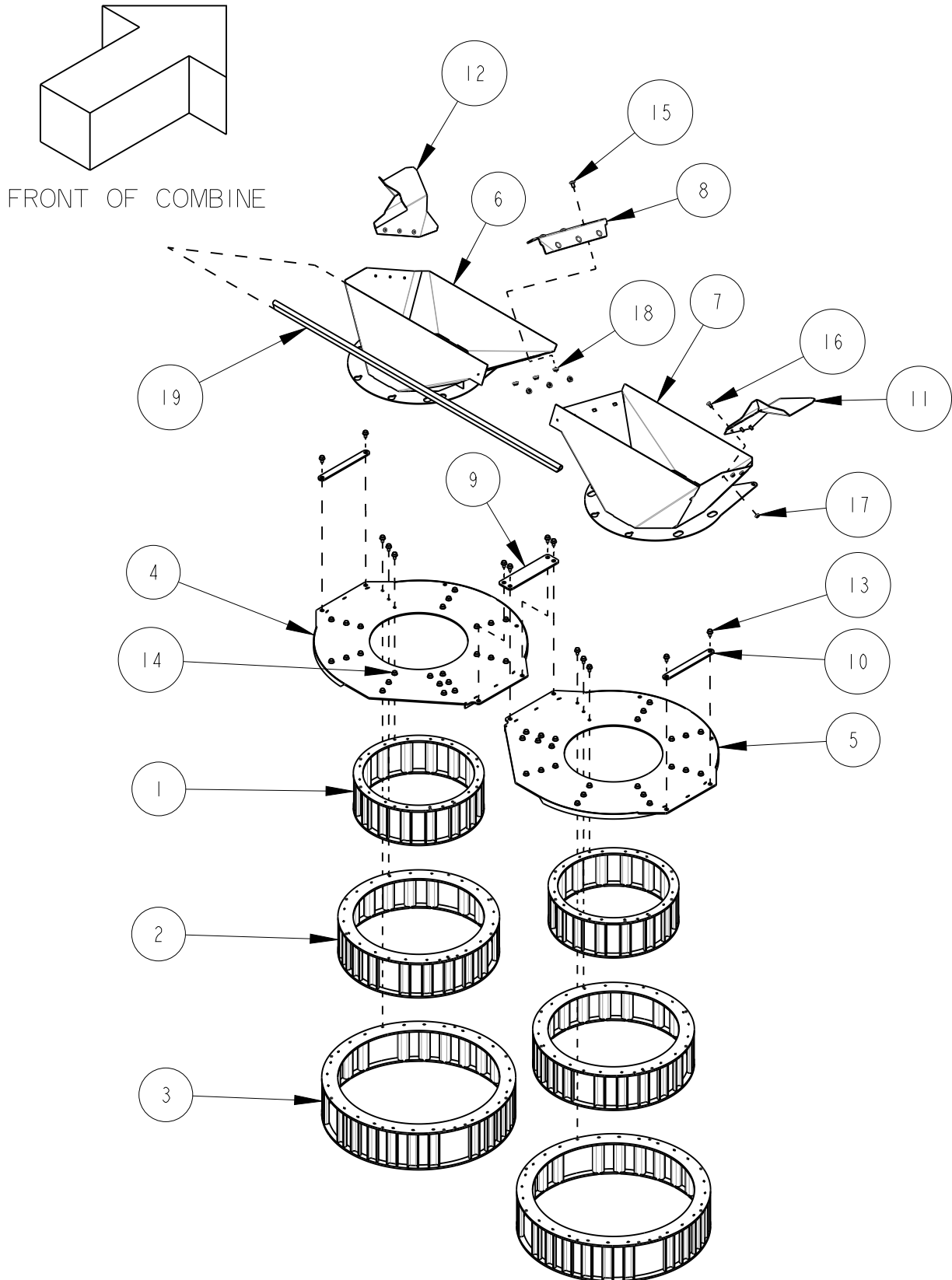
Serial No Range From:  
SCCA0001

Serial No Range To:  
SCCA0099

ITEM NO.	PART NO.	DESCRIPTION	QTY	NOTE
1	SCI77BL	STATOR TOP LT - BLACK	1	
2	SCI77BR	STATOR TOP RT - BLACK	1	
3	SCI83BL	CHAFF INLET LT - BLACK	1	
4	SCI83BR	CHAFF INLET RT - BLACK	1	
5	SCI84B	NOSE CHAFF CHUTE - BLACK	1	
6	SC215B	PLATE HOUSING LINK - BLACK	1	
7	SC260B	LINK SCU POST - BLACK	2	
8	SC408H	STATOR CONTINUOUS REDUCED RING MID	2	S/S SCI32H
9	SC409H	STATOR CONTINUOUS REDUCED RING OUTER	2	S/S SCI33H
10	SC488H	STATOR CONTINUOUS RING INNER	2	S/S SCI31H
11	B21M-0816	BOLT FLG M8X16 C8.8 YZD Iso8102	58	
12	B21M-0820	BOLT FLG M8X20 C8.8 YZD Iso8102	4	
13	B31M-0816	BOLT RH M8x16 C8.8 YZD ISO8678 Short Neck	6	
14	N21M-08	NUT FLG M8 C8 YZD Iso4161	6	
15	SC420-01	BULB SEAL	1	
	SC409K	KIT, CONTINUOUS STATOR RINGS	2	S/S SCI33K

SC006-05

Indicate implement serial number with any parts order \_\_\_\_\_



SC006-05

CASE AFX Seed Control Unit

Page: 2 - 4  
Date: 17FEB2023

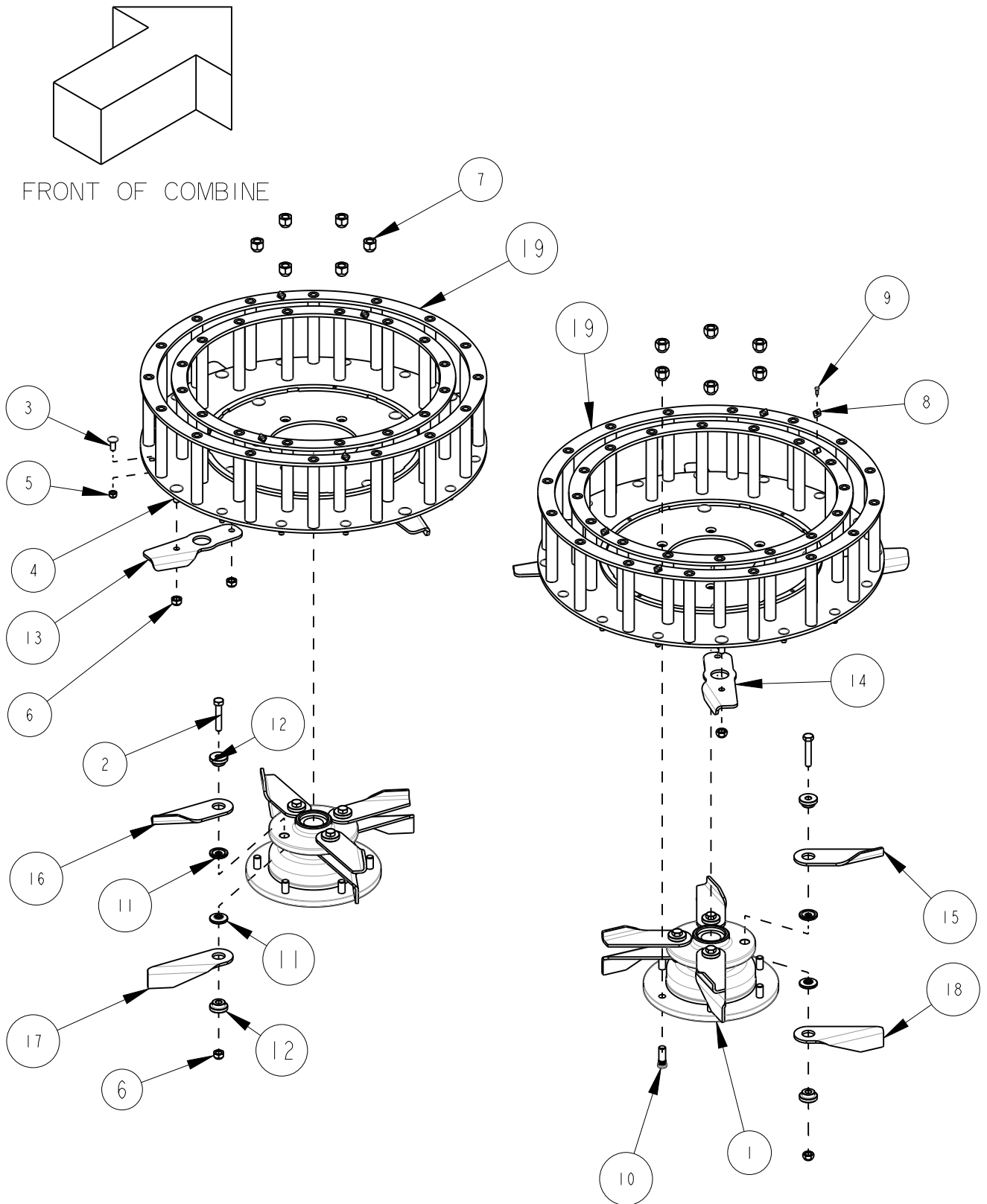
Serial No Range From:  
SCCA0100

Serial No Range To:  
PRESENT

ITEM NO.	PART NO.	DESCRIPTION	QTY	NOTE
1	SCI31H	STATOR RING INNER	2	
2	SCI32H	STATOR RING MIDDLE	2	
3	SCI33H	STATOR RING OUTER	2	
4	SCI77BL	STATOR TOP LT - BLACK	1	
5	SCI77BR	STATOR TOP RT - BLACK	1	
6	SCI83BL	CHAFF INLET LT - BLACK	1	
7	SCI83BR	CHAFF INLET RT - BLACK	1	
8	SCI84B	NOSE CHAFF CHUTE - BLACK	1	
9	SC215B	PLATE HOUSING LINK - BLACK	1	
10	SC260B	LINK SCU POST - BLACK	2	
11	SC696BL	SEAL VENT AFX SCU LT - BLACK	1	
12	SC696BR	SEAL VENT AFX SCU RT - BLACK	1	
13	B2IM-0816	BOLT FLG M8X16 C8.8 YZD Iso8102	58	
14	B2IM-0820	BOLT FLG M8X20 C8.8 YZD Iso8102	4	
15	B3IM-0816	BOLT RH M8x16 C8.8 YZD ISO8678 Short Neck	6	
16	B38M-0616	BOLT RH ALLEN M6x16 C8.8 YZD DIN11252 No Neck	6	
17	N2IM-06	NUT FLG M6 C8 YZD Iso4161	6	
18	N2IM-08	NUT FLG M8 C8 YZD Iso4161	6	
19	SC420-01	BULB SEAL	1	
	SCI33K	KIT, GAPPED STATOR RINGS	2	INCLUDES SCI31H, SCI32H, SCI33H

SC006-05

Indicate implement serial number with any parts order \_\_\_\_\_



SC006-05



CASE AFX Seed Control Unit

Page: 3 - 2  
Date:17FEB2023

Serial No Range From:  
SCCA0001

Serial No Range To:  
PRESENT

ITEM NO.	PART NO.	DESCRIPTION	QTY	NOTE
1	RPIO49A	HUB ASSY SCU ROTOR	2	INCLUDES RP987
2	B12M-1055	BOLT HEX MIOX55 C10.9 YZD Iso4014	8	
3	B31M-0820	BOLT RH M8x20 C8.8 YZD ISO8678 Short Neck	24	
4	B31M-1025	BOLT RH MIOX25 C8.8 YZD ISO8678 Short Neck	16	
5	N42M-08	NUT LOCK STL M8 C10 YZD DIN980V	24	
6	N42M-10	NUT LOCK STL M10 C10 YZD DIN980V	24	
7	RPIO12	NUT WHEEL M12-1.5 C10 ZN	12	
8	RPIO17	SCRAPER SC ROTOR TOP	8	NSS - RPIO17K
9	RPIO28	SCREW TAPER HEAD TORX M4x14 BLK	8	NSS - RPIO17K
10	RP987	BOLT STUD M12-1.5 35L C10.9 ZN	12	
11	SCI63-01	BUSHING BLADE SCU INNER	16	NSS - SCI74K
12	SCI65H	BUSHING BLADE SCU OUTER /H	16	NSS - SCI74K
13	SC204LC	BLADE SC DISC BTM LT /C	4	NSS - SC253CK
14	SC204RC	BLADE SCU RT ROTOR BTM /C	4	NSS - SC253CK
15	SC252LC	BLADE FAN LT SCU /C 0.78w	4	NSS - SC253CK
16	SC252RC	BLADE FAN RT SCU /C 0.78w	4	NSS - SC253CK
17	SC253LC	BLADE FAN LT SCU /C 1.5w	4	NSS - SC253CK
18	SC253RC	BLADE FAN RT SCU /C 1.5w	4	NSS - SC253CK
19	SCI30A	ROTOR SCU /SERVICE 16/16	2	INCLUDES 3,5,8,9
	SCI74K	KIT, BUSHING BLADE SCU (32)	1	INCLUDES 6,11,12
	SC253CK	KIT, BUSHING FAN SCU (12L/12R)	1	INCLUDES 2,4,6,13,14,15,16,17,18
	RPIO17K	KIT, SCRAPER SCU ROTOR (8)	1	INCLUDES 8,9
	RPIO28K	KIT, SCREW TAPER HEAD TORX M4x14L (16)		INCLUDES 16PCS RPIO28

NSS = NOT SERVICED SEPARATELY

SC006-05

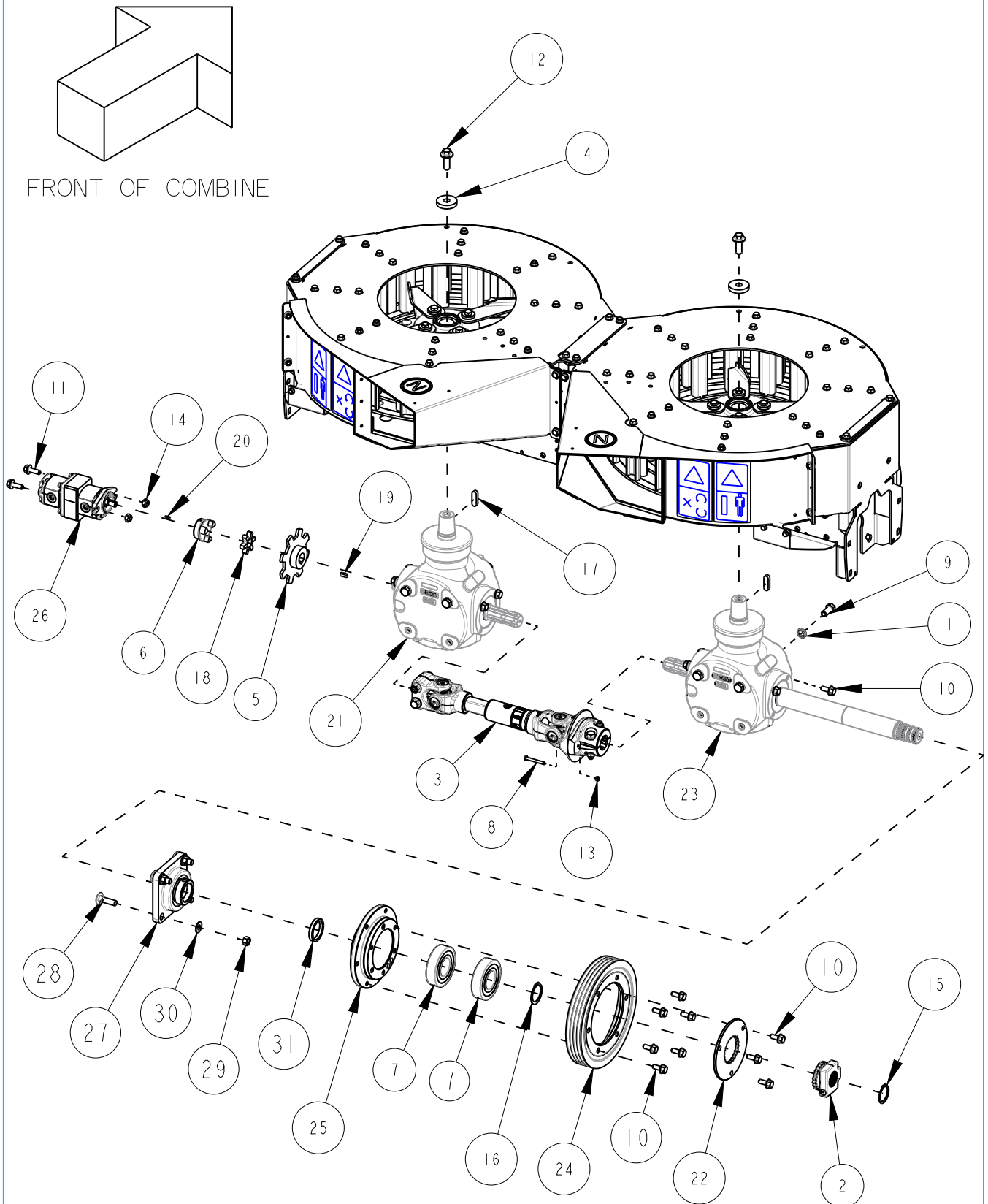
Indicate implement serial number with any parts order

CASE AFX Seed Control Unit

Page: 4 - 1  
Date:20JULY2021

Serial No Range From:  
SCCA0001

Serial No Range To:  
SCCA0006



SC006-05

Indicate implement serial number with any parts order

CASE AFX Seed Control Unit

Page: 4 - 2  
Date: 20JULY2021

Serial No Range From:  
SCCA0001

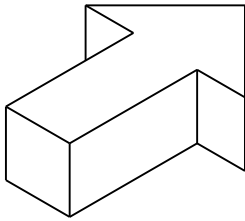
Serial No Range To:  
SCCA0006

ITEM NO.	PART NO.	DESCRIPTION	QTY	NOTE
1	RPI041	WASHER, WEDGE LOCK, M14, PAIR	8	
2	RPII62A	COUPLER DRIVE ASSY 24T/ 2IT EXT	1	
3	RPII93	DRIVELINE ASSY 1.375-6 SPLINE w/ SHEARBOLT	1	
4	SCII3Z	WASHER ROTOR SCU	2	
5	SCI53Z	PICKUP, SPEED SENSOR 8 LUG YZD	1	
6	SC226Z	COUPLING 3 JAW	1	
7	87624213	BEARING, 45mm ID	2	
8	BIIM-0650	BOLT HEX M6X50 C8.8 YZD Iso4014	1	
9	BI2M-1430	BOLT HEX M14x30 C10.9 YZD Iso4014	8	
10	B2IM-1025	BOLT FLG M10X25 C8.8 YZD Iso8102	17	
11	B2IM-1030	BOLT FLG M10X30 C8.8 YZD Iso8102	2	
12	B2IM-1440	BOLT FLG M14X40 C8.8 YZD Iso8102	2	
13	N4IM-06	NUT LOCK STL M6 C8 YZD DIN980V	1	
14	N42M-10	NUT LOCK STL M10 C10 YZD DIN980V	2	
15	Q23M-40	SNAP RING, EXT M40 YZD	1	
16	Q23M-45	SNAP RING, EXT M45 YZD	1	
17	RPI007	KEY, OVAL 12mm x 8mm x 40mm L Steel Oiled	2	
18	RPI051	COUPLING, SPIDER JAW	1	
19	RPI079	KEY, OVAL 0.25in x 0.25in x 0.75in L Steel Oiled 1		
20	RPI082	KEY, OVAL 0.125in x 0.125in x 0.5in L Steel Oiled 1		
21	RPIII2B	GEARBOX 1:1.35 CCW 6 SPLINE, TAPERED PUMP, BP - BLACK	1	
22	RPIII7	COUPLING SHEAVE 2IT	1	
23	RPII43B	GEARBOX 1:1.35 CW 6 Spline, Tapered, Long Shaft, BLACK	1	
24	RPII59	SHEAVE RING SCU 4M 10.83 OD	1	
25	RPII60	HUB 4PVM SCU DRIVEN OFFSET	1	
26	RPII97	PUMP, HYD, CW	1	
27	RP938A	BEARING ASSY 45MM	1	S/S - RPI222A
28	B36M-1245	BOLT RH M12X45 C8.8 LONG NECK YZD	4	S/S - BIIM-1850 (USED FOR RPI222A)
29	NIIM-12	NUY HEX M12 C8 YZD	4	S/S - N4IM-18 (USED FOR RPI222A)
30	W3IM-12	WASHER, BELLEVILLE	4	(NOT USED FOR RPI222A)
31	SC485Z	SPACER, 46ID 7L YZD	1	(NOT USED FOR RPI222A)
	RPI074	GEAR OIL, 75W90 EXTREME PRESSURE SYNTHETIC GL5		

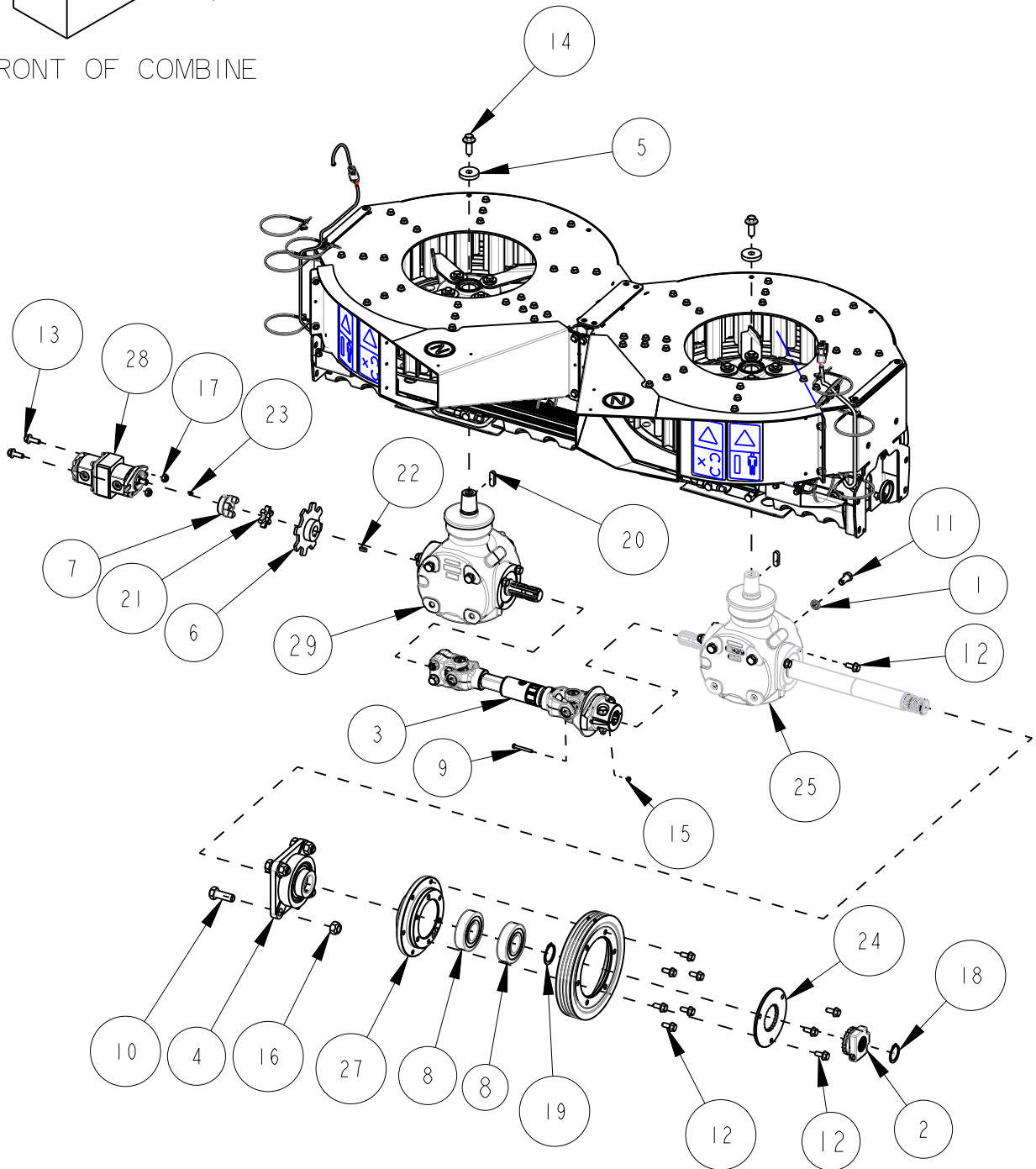
S/S = SUPERSEDED BY

SC006-05

Indicate implement serial number with any parts order



FRONT OF COMBINE



CASE AFX Seed Control Unit

Page: 4 - 4  
Date: 17FEB2023

Serial No Range From:  
SCCA0007

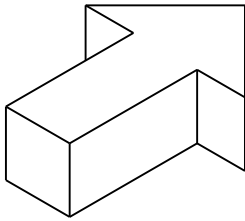
Serial No Range To:  
SCCA0199

ITEM NO.	PART NO.	DESCRIPTION	QTY	NOTE
1	RPI041	WASHER WEDGE LOCK M14 PAIR	8	
2	RPI162A	COUPLER DRIVE ASSY 24T/ 21T EXT	1	
3	RPI193	DRIVELINE ASSY 1.375-6 SPLINE w/ SHEARBOLT	1	
4	RPI222A	BEARING ASSY 45mm HD ECL4B CAST FLG	1	
5	SC113Z	WASHER ROTOR SCU	2	
6	SC153Z	PICKUP, SPEED SENSOR 8 LUG YZD	1	
7	SC226Z	COUPLING 3 JAW	1	
8	87624213	BEARING, 45mm ID	2	
9	BI1M-0650	BOLT HEX M6X50 C8.8 YZD Iso4014	1	
10	BI1M-1850	BOLT HEX M18X50 C8.8 YZD Iso4014	4	
11	BI2M-1430	BOLT HEX M14x30 C10.9 YZD Iso4014	8	
12	B21M-1025	BOLT FLG M10X25 C8.8 YZD Iso8102	17	
13	B21M-1030	BOLT FLG M10X30 C8.8 YZD Iso8102	2	
14	B21M-1440	BOLT FLG M14X40 C8.8 YZD Iso8102	2	
15	N41M-06	NUT LOCK STL M6 C8 YZD DIN980V	1	
16	N41M-18	NUT LOCK STL M18 C10 YZD DIN980V	4	
17	N42M-10	NUT LOCK STL M10 C10 YZD DIN980V	2	
18	Q23M-40	SNAP RING, EXT M40 YZD	1	
19	Q23M-45	SNAP RING, EXT M45 YZD	1	
20	RPI007	KEY, OVAL 12mm x 8mm x 40mm L Steel Oiled	2	
21	RPI051	COUPLING, SPIDER JAW	1	
22	RPI079	KEY, OVAL 0.25in x 0.25in x 0.75in L Steel Oiled	1	
23	RPI082	KEY, OVAL 0.125in x 0.125in x 0.5in L Steel Oiled	1	
24	RPI117	COUPLING SHEAVE 21T	1	
25	RPI143B	GEARBOX 1:1.35 CW 6 Spline, Tapered, Long Shaft, BLACK	1	
26	RPI159	SHEAVE RING SCU 4M 10.83 OD	1	
27	RPI160	HUB 4PVM SCU DRIVEN OFFSET	1	
28	RPI197	PUMP, HYD, CW	1	
29	RPI112B	GEARBOX, 1:1.35 CCW 6 SPLINE, TAPERED - BLACK	1	
	RPI074	GEAR OIL, 75W90 EXTREME PRESSURE SYNTHETIC GL5		
	RPI22A_ZERK	OEM ZERK STRAIGHT RPI22A FLANGE BEARING	1	S/S RPI446

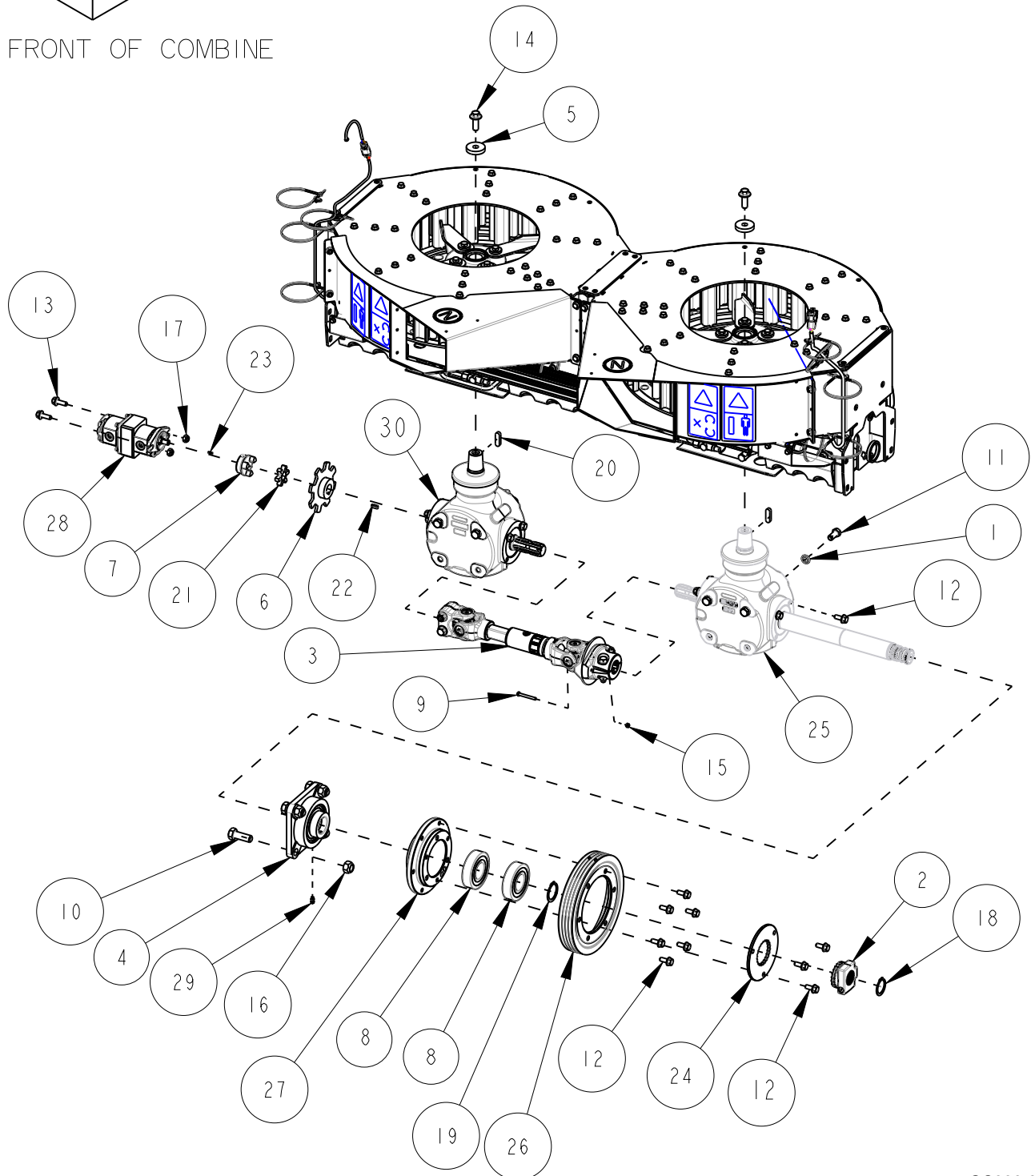
S/S = SUPERSEDED BY

SC006-05

Indicate implement serial number with any parts order



FRONT OF COMBINE



SC006-05

Indicate implement serial number with any parts order

CASE AFX Seed Control Unit

Page: 4 - 6  
Date:17FEB2023

Serial No Range From:  
SCCA0200

Serial No Range To:  
PRESENT

ITEM NO.	PART NO.	DESCRIPTION	QTY	NOTE
1	RPI041	WASHER WEDGE LOCK M14 PAIR	8	
2	RPI162A	COUPLER DRIVE ASSY 24T/ 21T EXT	1	
3	RPI193	DRIVELINE ASSY 1.375-6 SPLINE w/ SHEARBOLT	1	
4	RPI222A	BEARING ASSY 45mm HD ECL4B CAST FLG	1	INCLUDES RPI446
5	SC113Z	WASHER ROTOR SCU	2	
6	SC153Z	PICKUP, SPEED SENSOR 8 LUG YZD	1	
7	SC226Z	COUPLING 3 JAW	1	
8	87624213	BEARING, 45mm ID	2	
9	BI1M-0650	BOLT HEX M6X50 C8.8 YZD Iso4014	1	
10	BI1M-1850	BOLT HEX M18X50 C8.8 YZD Iso4014	4	
11	BI2M-1430	BOLT HEX M14x30 C10.9 YZD Iso4014	8	
12	B21M-1025	BOLT FLG M10X25 C8.8 YZD Iso8102	17	
13	B21M-1030	BOLT FLG M10X30 C8.8 YZD Iso8102	2	
14	B21M-1440	BOLT FLG M14X40 C8.8 YZD Iso8102	2	
15	N41M-06	NUT LOCK STL M6 C8 YZD DIN980V	1	
16	N41M-18	NUT LOCK STL M18 C10 YZD DIN980V	4	
17	N42M-10	NUT LOCK STL M10 C10 YZD DIN980V	2	
18	Q23M-40	SNAP RING, EXT M40 YZD	1	
19	Q23M-45	SNAP RING, EXT M45 YZD	1	
20	RPI007	KEY, OVAL 12mm x 8mm x 40mm L Steel Oiled	2	
21	RPI051	COUPLING, SPIDER JAW	1	
22	RPI079	KEY, OVAL 0.25in x 0.25in x 0.75in L Steel Oiled	1	
23	RPI082	KEY, OVAL 0.125in x 0.125in x 0.5in L Steel Oiled	1	
24	RPI117	COUPLING SHEAVE 21T	1	
25	RPI143B	GEARBOX 1:1.35 CW 6 Spline, Tapered, Long Shaft, BLACK	1	
26	RPI159	SHEAVE RING SCU 4M 10.83 OD	1	
27	RPI160	HUB 4PVM SCU DRIVEN OFFSET	1	
28	RPI197	PUMP, HYD, CW	1	
29	RPI446	ZERK GREASE 45-DEG M6-1	1	
30	RPI112B	GEARBOX, 1:1.35 CCW 6 SPLINE, TAPERED - BLACK	1	
	RPI074	GEAR OIL, 75W90 EXTREME PRESSURE SYNTHETIC GL5		

SC006-05

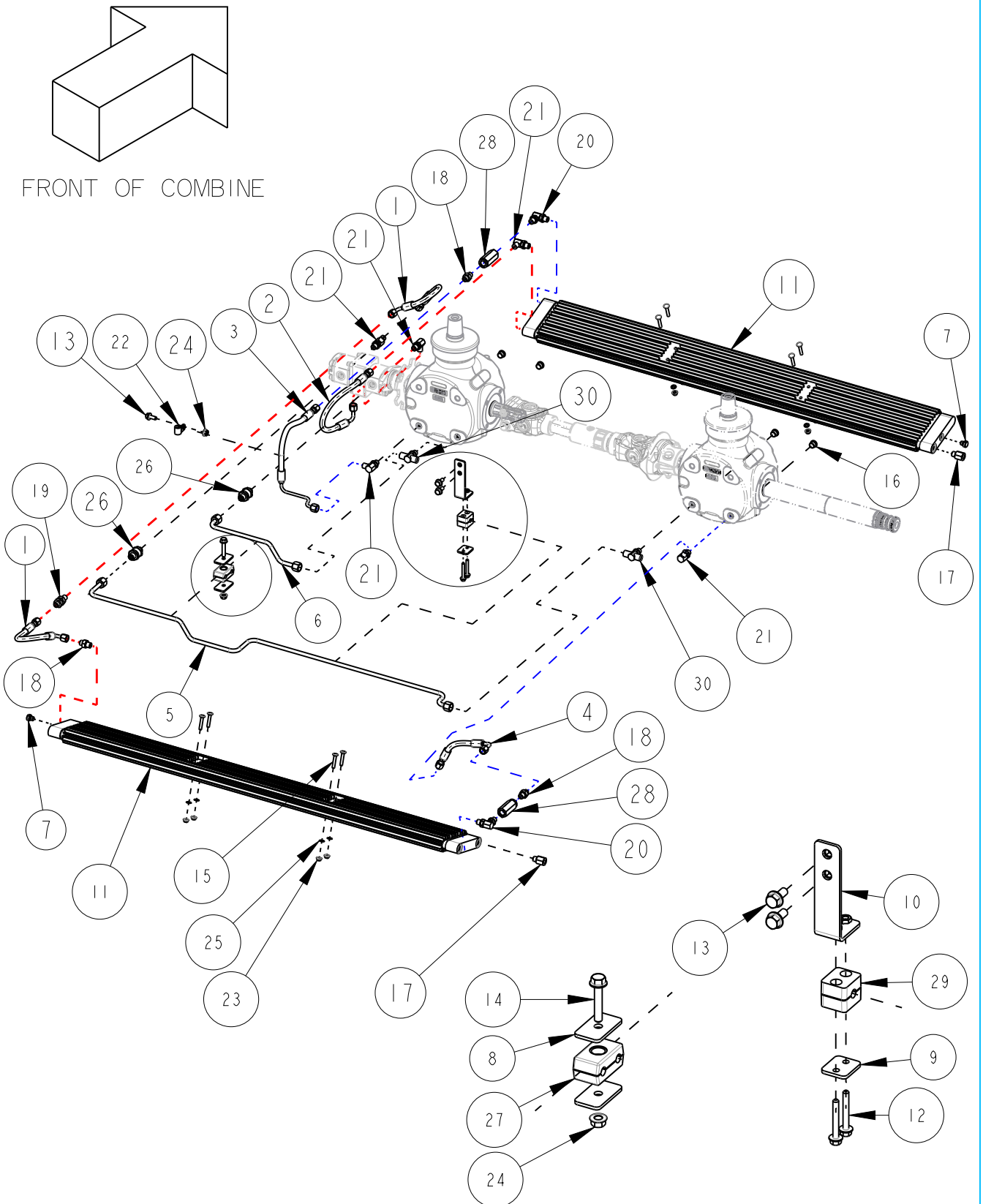
Indicate implement serial number with any parts order

CASE AFX Seed Control Unit

Page: 5 - 1  
Date: 25FEB2022

Serial No Range From:  
SCCA0001

Serial No Range To:  
SCDA0099



SC006-05

Indicate implement serial number with any parts order



CASE AFX Seed Control Unit

Page: 5 - 2  
Date:25FEB2022

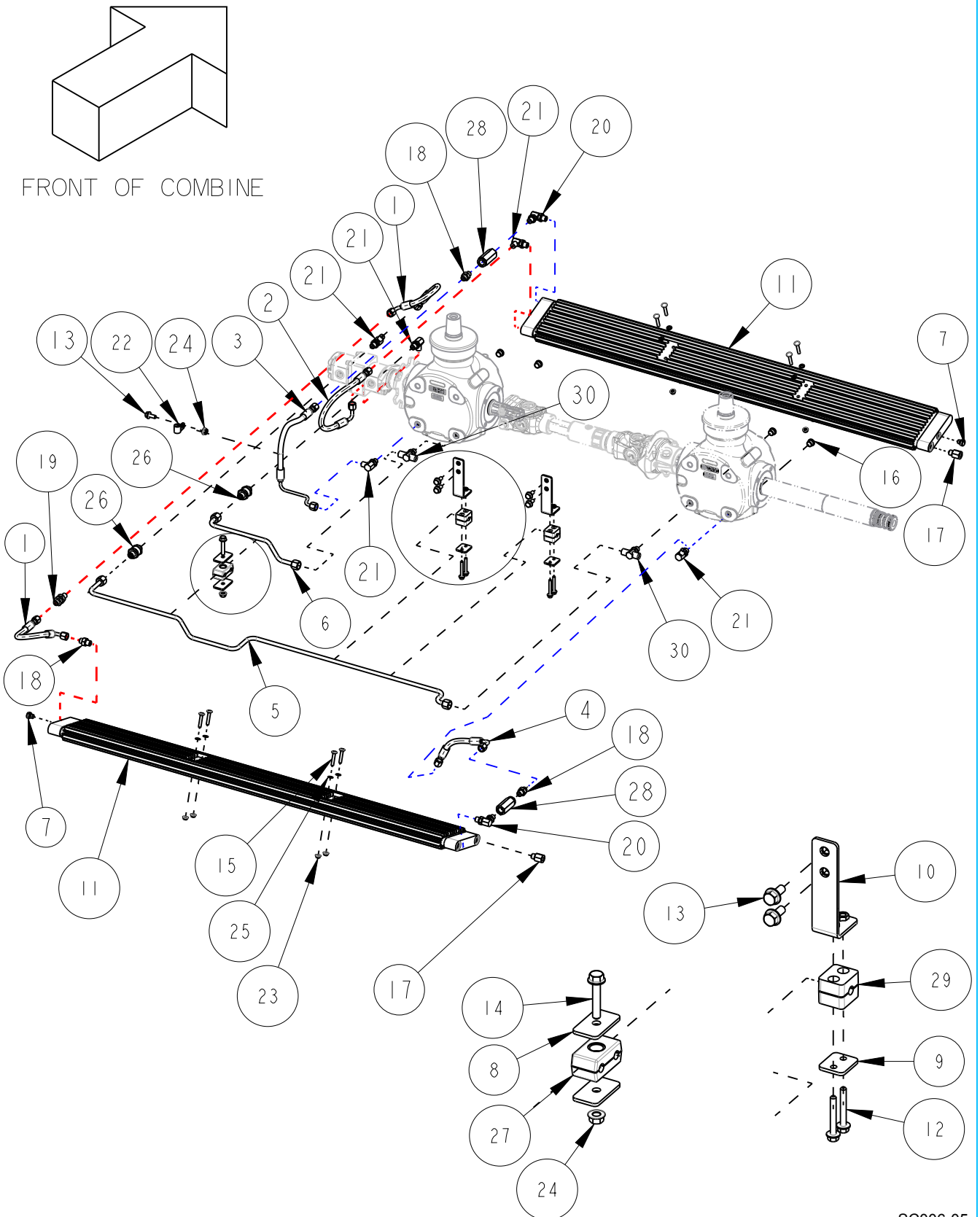
Serial No Range From:  
SCCA0001

Serial No Range To:  
SCDA0099

ITEM NO.	PART NO.	DESCRIPTION	QTY	NOTE
1	HHI28	HOSE HYD -4 FORFS, 283mm	2	
2	HHI30	HOSE HYD 1/4 x 379mm	1	
3	HHI32	HYD GEARBOX FEED LT	1	
4	HHI33	HOSE HYD -4 FORFS, 115mm	1	
5	HTI09	HYD TUBE 0.375OD 41.5L RH DR SCU	1	
6	HTIII	HYD TUBE 0.375OD 10.2L RH DR SCU	1	
7	RPI235A	Plug, MIOx1.5 ORB Cooler SCU w/ O-Ring	2	
8	SCIII Z	PLATE HYD BLOCK YZD	2	
9	SCII5Z	PLATE HYD BLOCK 2H YZD	1	
10	SCI23Z	BRACKET MID HYD LINE YZD	1	
11	SC30IW	COOLER SCU	2	
12	B2IM-0645	BOLT FLG M6X45 C8.8 YZD Iso8102	2	
13	B2IM-0820	BOLT FLG M8X20 C8.8 YZD Iso8102	3	
14	B2IM-0845	BOLT FLG M8X45 C8.8 YZD Iso8102	1	
15	B3IM-0635	BOLT RH M6X35 C8.8 YZD ISO8678 Short Neck	8	
16	H20-06	FIT HYD PLUG SOCKET 6 MORB	4	
17	H25-0602FP	HYD FIT STR 6MB 2FP	2	
18	H25-0604MFS	HYD FIT STR 6MB 4MORFS	3	
19	H28-0404BH	HYD FIT STR 4MORFS 4MORFS BLKHD	1	
20	H35-0606	FIT HYD 90DEG 6MB 6MB	2	
21	H35-0604MFS	FIT HYD 90DEG 6MB 4MORFS	5	
22	H99-08	TUBE STRAP 0.5 OD, .375 HOLE ZN RUBBER	1	
23	N2IM-06	NUT FLG M6 C8 YZD Iso4161	8	
24	N2IM-08	NUT FLG M8 C8 YZD Iso4161	2	
25	N63M-06	NUT PUSH M6 YZD	8	
26	RPI075	FILTER SUCTION 6 MORB 6 MORFS	2	
27	RPI076	TUBE CLAMP HYD 0.375 ID x2	1	
28	RPI080	VALVE CHECK 6 FORB	2	
29	RPI083	TUBE CLAMP HYD 0.375 ID SINGLE	1	
30	SC365-01	FIT HYD TEE TEMP SENSOR	2	

SC006-05

Indicate implement serial number with any parts order



SC006-05

Indicate implement serial number with any parts order

CASE AFX Seed Control Unit

Page: 5 - 4  
Date:25FEB2022

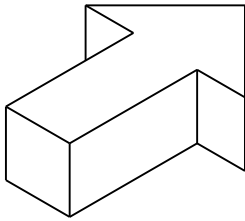
Serial No Range From:  
SCCA0100

Serial No Range To:  
PRESENT

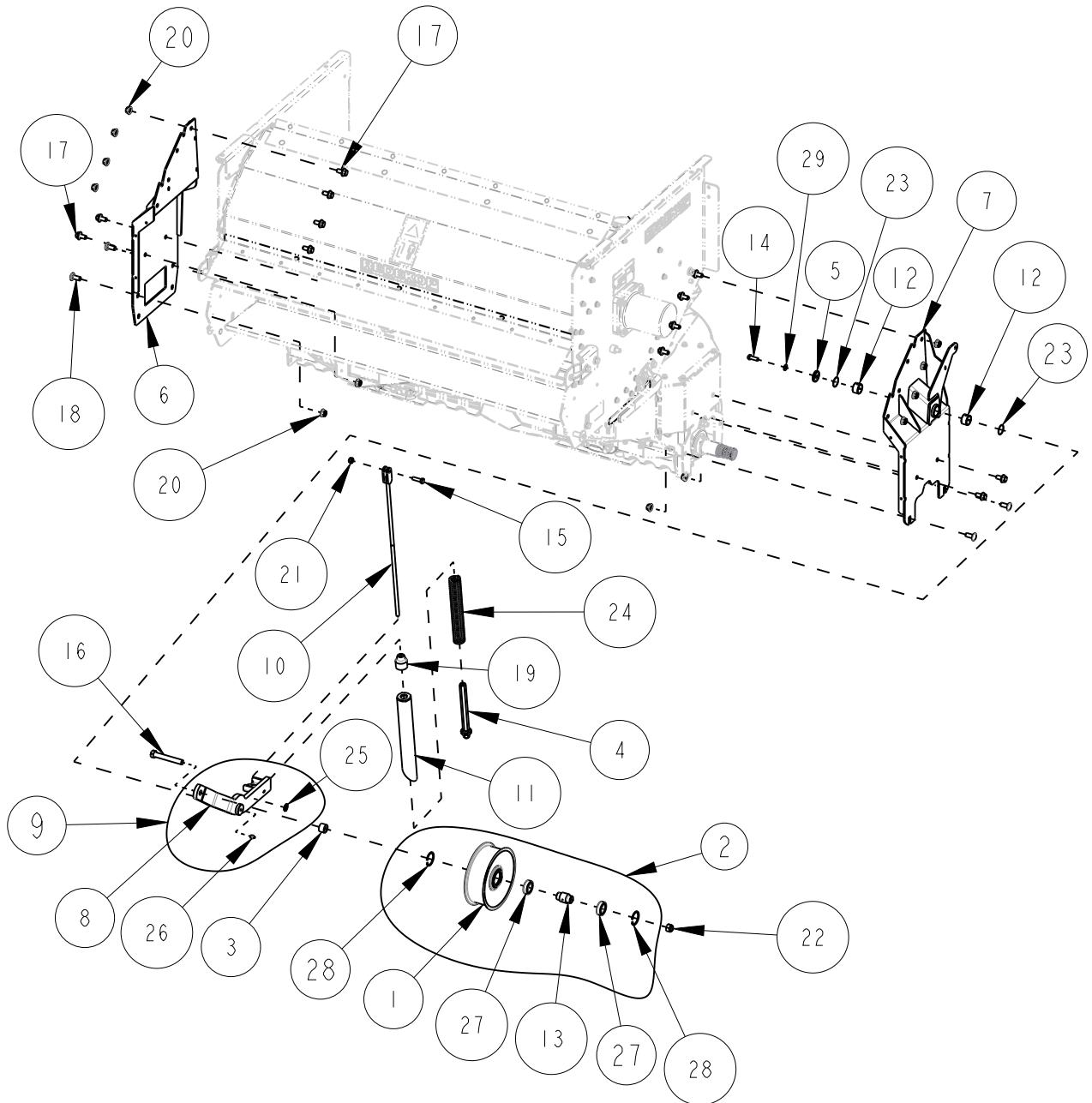
ITEM NO.	PART NO.	DESCRIPTION	QTY	NOTE
1	HHI28	HOSE HYD -4 FORFS, 283mm	2	
2	HHI30	HOSE HYD 1/4 x 379mm	1	
3	HHI32	HYD GEARBOX FEED LT	1	
4	HHI33	HOSE HYD -4 FORFS, 115mm	1	
5	HTI09	HYD TUBE 0.375OD 41.5L RH DR SCU	1	
6	HTIII	HYD TUBE 0.375OD 10.2L RH DR SCU	1	
7	RPI235A	Plug, MIOx1.5 ORB Cooler SCU w/ O-Ring	2	
8	SCIII Z	PLATE HYD BLOCK YZD	2	
9	SCII5Z	PLATE HYD BLOCK 2H YZD	2	
10	SCI23Z	BRACKET MID HYD LINE YZD	2	
11	SC30IW	COOLER SCU	2	
12	B2IM-0645	BOLT FLG M6X45 C8.8 YZD Iso8102	4	
13	B2IM-0820	BOLT FLG M8X20 C8.8 YZD Iso8102	5	
14	B2IM-0845	BOLT FLG M8X45 C8.8 YZD Iso8102	1	
15	B3IM-0635	BOLT RH M6X35 C8.8 YZD ISO8678 Short Neck	8	
16	H20-06	FIT HYD PLUG SOCKET 6 MORB	4	
17	H25-0602FP	HYD FIT STR 6MB 2FP	2	
18	H25-0604MFS	HYD FIT STR 6MB 4MORFS	3	
19	H28-0404BH	HYD FIT STR 4MORFS 4MORFS BLKHD	1	
20	H35-0606	FIT HYD 90DEG 6MB 6MB	2	
21	H35-0604MFS	FIT HYD 90DEG 6MB 4MORFS	5	
22	H99-08	TUBE STRAP 0.5 OD, .375 HOLE ZN RUBBER	1	
23	N2IM-06	NUT FLG M6 C8 YZD Iso4161	8	
24	N2IM-08	NUT FLG M8 C8 YZD Iso4161	2	
25	N63M-06	NUT PUSH M6 YZD	8	
26	RPI075	FILTER SUCTION 6 MORB 6 MORFS	2	
27	RPI076	TUBE CLAMP HYD 0.375 ID x2	1	
28	RPI080	VALVE CHECK 6 FORB	2	
29	RPI083	TUBE CLAMP HYD 0.375 ID SINGLE	2	
30	SC365-01	FIT HYD TEE TEMP SENSOR	2	

SC006-05

Indicate implement serial number with any parts order \_\_\_\_\_



FRONT OF COMBINE



CASE AFX Seed Control Unit

Page: 6 - 2  
Date: 16JUL2021

Serial No Range From:  
SCCA0001

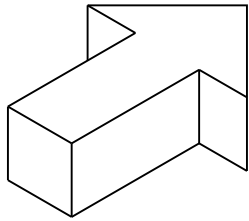
Serial No Range To:  
PRESENT

ITEM NO.	PART NO.	DESCRIPTION	QTY	NOTE
1	RP923B	PULLEY, IDLER RIBBED 65FW 47ID - BLACK	1	NSS - RP923BA
2	RP923BA	IDLER ASSY 200mm - BLACK	1	INCLUDES RP923B, 84287963, RP926, RP934
3	SC293Z	SPACER SCU IDLER 19MM LG YZD	1	
4	SC313Z	NUT SCU TNSN ADJ YZD	1	
5	SC338Z	WASHER SCU IDLER YZD	1	
6	SC355BL	MOUNT, BRACKET SCU 55W LT - BLACK	1	
7	SC355BR	MOUNT, BRACKET SCU 55W RT - BLACK	1	
8	SC356B	IDLER ARM RT DRV - BLACK	1	NSS - SC356BA
9	SC356BA	IDLER ASSY RT DRV - BLACK	1	INCLUDES SC356B, RPII18, RPI092
10	SC374Z	TENSION ROD SCU 515mm YZD	1	
11	SC414B	TENSION INDICATOR NARROW - BLACK	1	
12	420434	BUSHING DX 30ID x 20L	2	
13	84287963	SPINDLE IDLER	1	
14	BIIM-1030	BOLT HEX M10X30 C8.8 YZD Iso4014	1	
15	BIIM-1035	BOLT HEX M10X35 C8.8 YZD Iso4014	1	
16	BIIM-16110	BOLT HEX M16X110 C8.8 YZD Iso4014	1	
17	B2IM-1225	BOLT FLG M12X25 C8.8 YZD Iso8102	12	
18	B3IM-1230	BOLT RH M12X30 C8.8 YZD ISO8678 Short Neck	4	
19	HI70141	PIVOT SPRING	1	
20	N2IM-12	NUT FLG M12 C8 YZD Iso4161	12	
21	N42M-10	NUT LOCK STL M10 C10 YZD DIN980V	1	
22	N42M-16	NUT LOCK STL M16 C10 YZD DIN980V	1	
23	OIIM-32-015	ORING RD 32mm ID x 1.5mm	2	
24	RPI063	SPRING-C 1.54" OD 17" FL	1	
25	RPI092	DECAL GREASE 50 HR	1	
26	RPII18	ZERK GREASE STR M10-1.5	1	
27	RP926	BEARING, 25mm ID	2	
28	RP934	CIRCLIP, INTERNAL 48.5mm OD	2	
29	WIIM-10	WASHER FLAT M10 x 20 x 2.3 YZD	1	

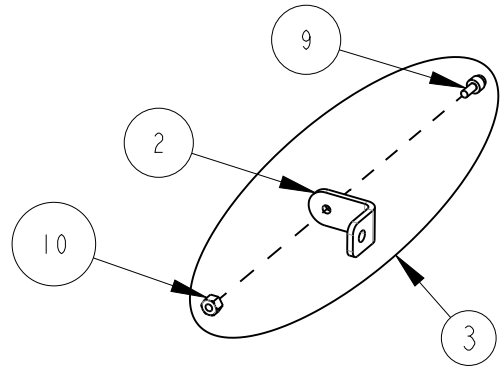
NSS = NOT SERVICED SEPARATELY

SC006-05

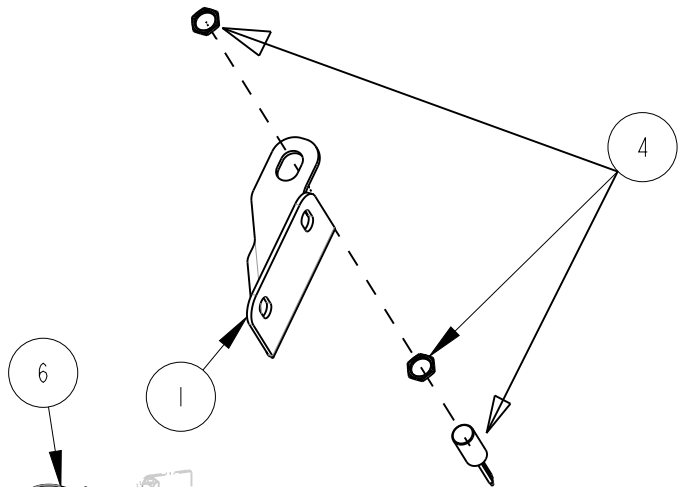
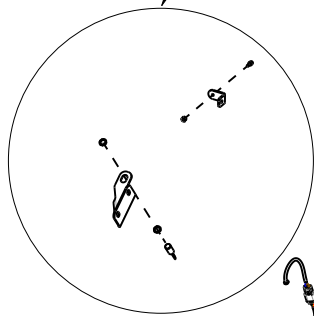
Indicate implement serial number with any parts order



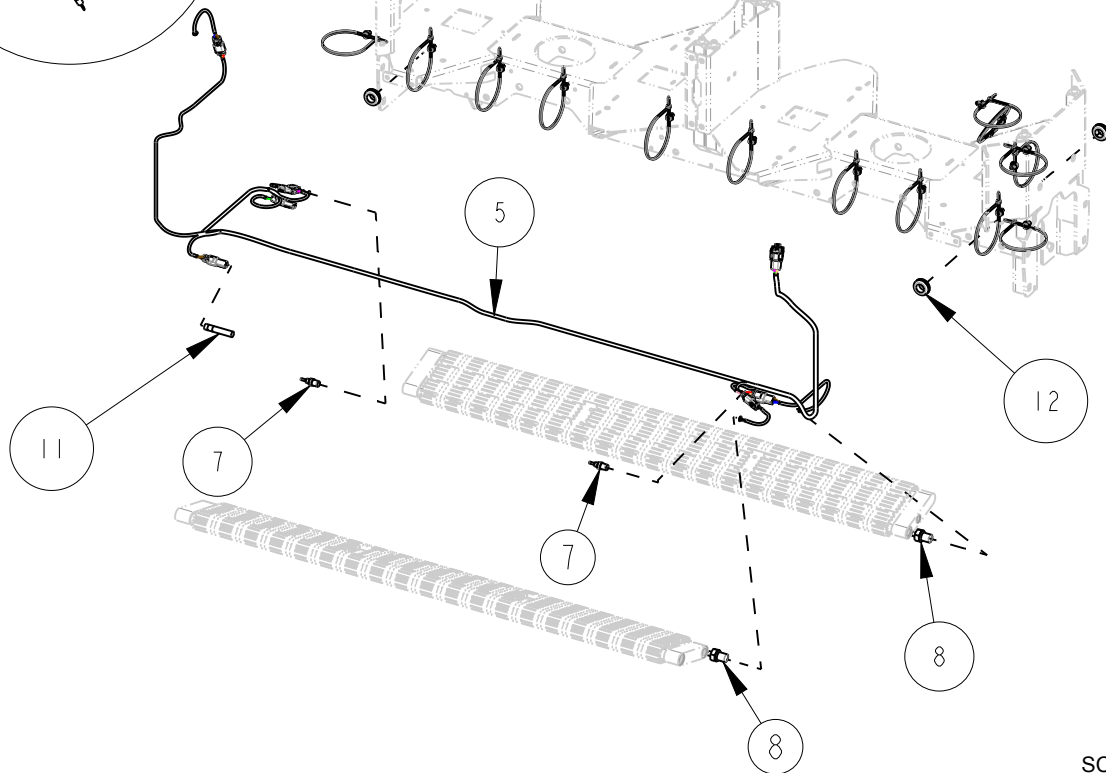
FRONT OF COMBINE



DETAIL A



DETAIL A



SC006-05

CASE AFX Seed Control Unit

Page: 7 - 2  
Date: 25 FEB 2022

Serial No Range From:  
SCCA0001

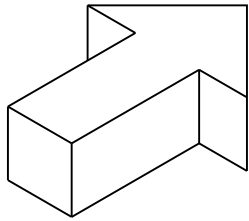
Serial No Range To:  
SCCA0099

ITEM NO.	PART NO.	DESCRIPTION	QTY	NOTE
1	CH690B	BRACKET PROX SENSOR MT - BLACK	1	FOR CHOPPER MAV
2	CH691B	TAB, PROXIMITY SENSOR - BLACK	1	NSS - CH691BA
3	CH691BA	ASSY PROX SENSOR TARGET - BLACK	1	FOR CHOPPER MAV INCLUDES CH691B, RPI101, RPI102
4	RPI125	SENSOR PROXIMITY 6" LEAD	1	FOR CHOPPER MAV
5	RPI184	HARNESS SCU RH DRIVE NARROW	1	
6	87741307	CABLE TIE, FIR TREE	17	
7	RPI069	SENSOR, OIL TEMP	2	
8	RPI070	SENSOR, PRESSURE SWITCH	2	
9	RPI101	MAGNET, ACTUATOR	1	NSS - CH691BA
10	RPI102	NUT LOCK #8-32 UNC NYLON ZINC	1	NSS - CH691BA
11	RPI124	SENSOR, SPEED 15IN CABLE	1	
12	RPI26	GROMMET .75ID 1.063H .188TK	3	

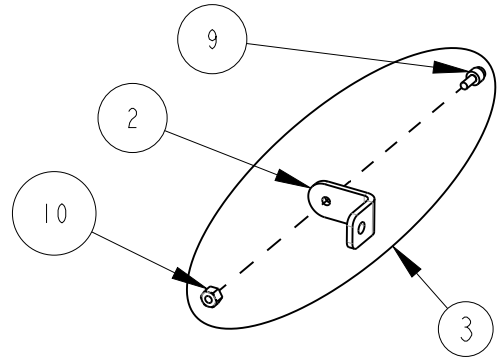
NSS = NOT SERVICED SEPARATELY

SC006-05

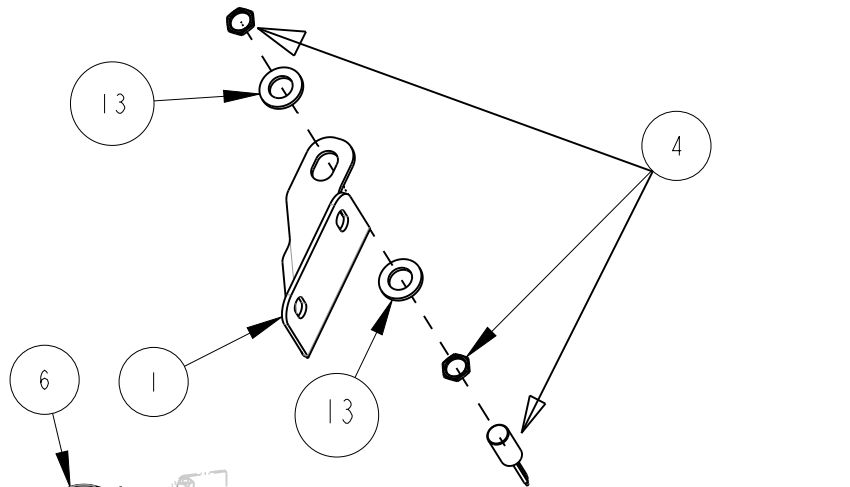
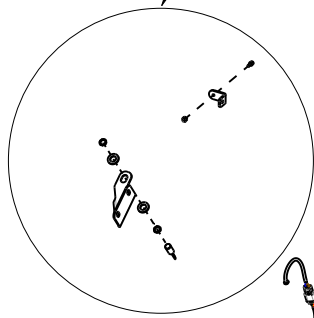
Indicate implement serial number with any parts order \_\_\_\_\_



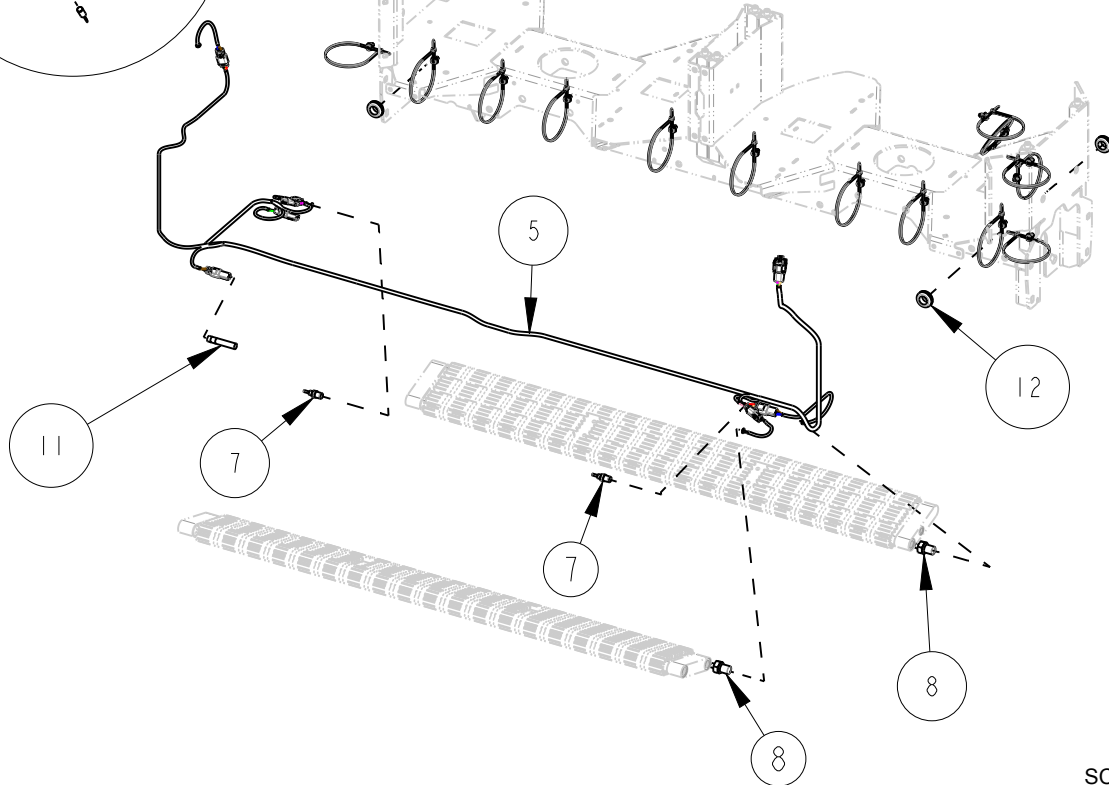
FRONT OF COMBINE



DETAIL A



DETAIL A



SC006-05



CASE AFX Seed Control Unit

Page: 7 - 4  
Date: 25 FEB 2022

Serial No Range From:  
SCCA0100

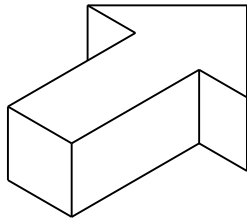
Serial No Range To:  
PRESENT

ITEM NO.	PART NO.	DESCRIPTION	QTY	NOTE
1	CH690B	BRACKET PROX SENSOR MT - BLACK	1	FOR CHOPPER MAV
2	CH691B	TAB, PROXIMITY SENSOR - BLACK	1	NSS - CH691BA
3	CH691BA	ASSY PROX SENSOR TARGET - BLACK	1	FOR CHOPPER MAV INCLUDES CH691B, RPI101, RPI102
4	RPI125	SENSOR PROXIMITY 6" LEAD	1	FOR CHOPPER MAV
5	RPI184	HARNESS SCU RH DRIVE NARROW	1	
6	87741307	CABLE TIE, FIR TREE	17	
7	RPI069	SENSOR, OIL TEMP	2	
8	RPI070	SENSOR, PRESSURE SWITCH	2	
9	RPI101	MAGNET, ACTUATOR	1	NSS - CH691BA
10	RPI102	NUT LOCK #8-32 UNC NYLON ZINC	1	NSS - CH691BA
11	RPI124	SENSOR, SPEED 151N CABLE	1	
12	RPI26	GROMMET .751D 1.063H .188TK	3	
13	WIIM-12	WASHER FLAT M12 x 23.5 x 2.4 YZD	2	

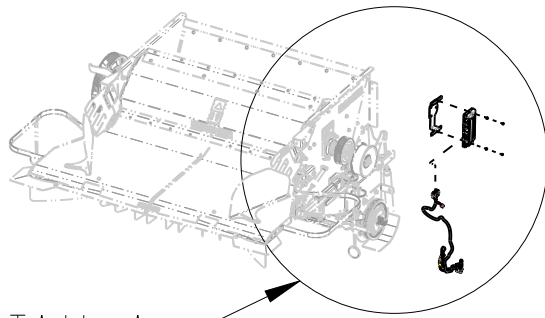
NSS = NOT SERVICED SEPARATELY

SC006-05

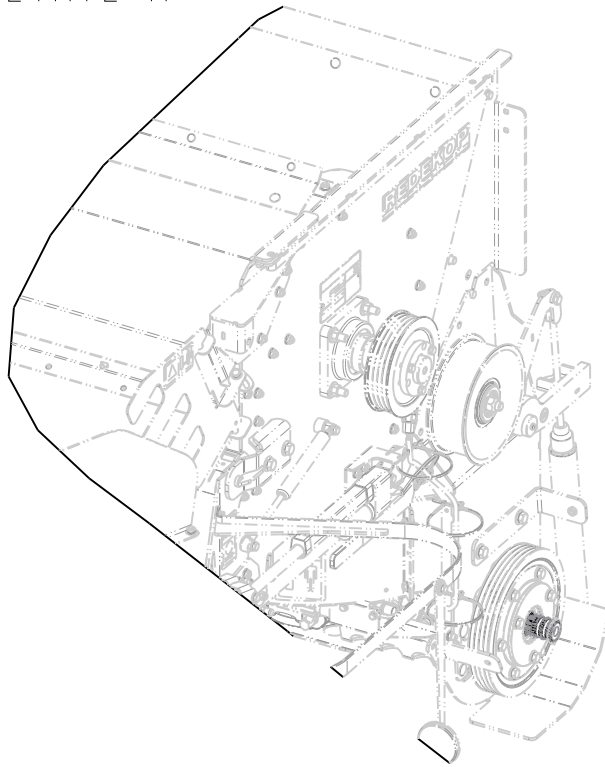
Indicate implement serial number with any parts order \_\_\_\_\_



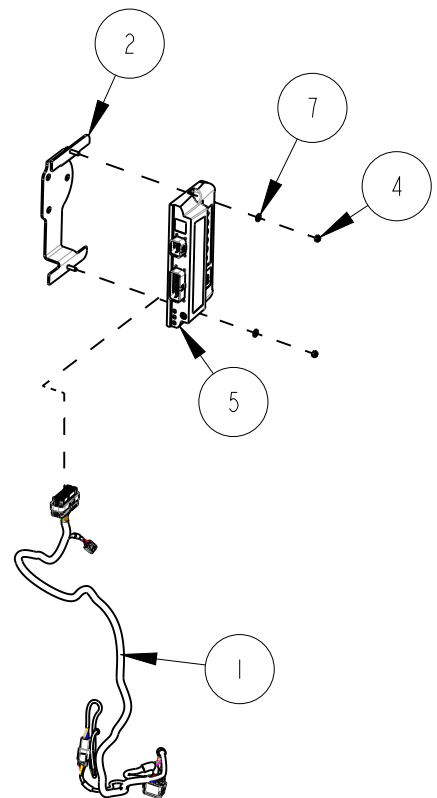
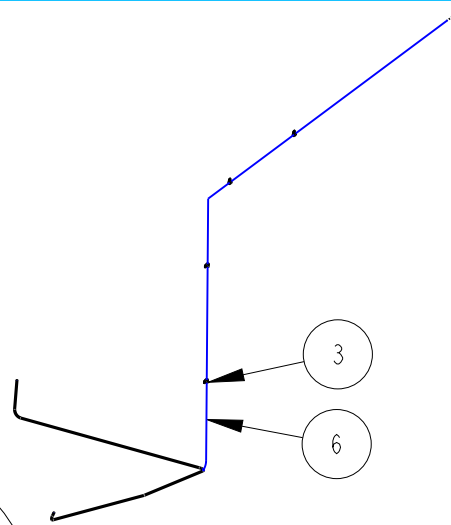
FRONT OF COMBINE



DETAIL A



DETAIL A



CASE AFX SCU-MAV CHOPPER ECU Control

Page: 8 - 2  
Date: 25 FEB 2022

Serial No Range From:  
SCCA0001

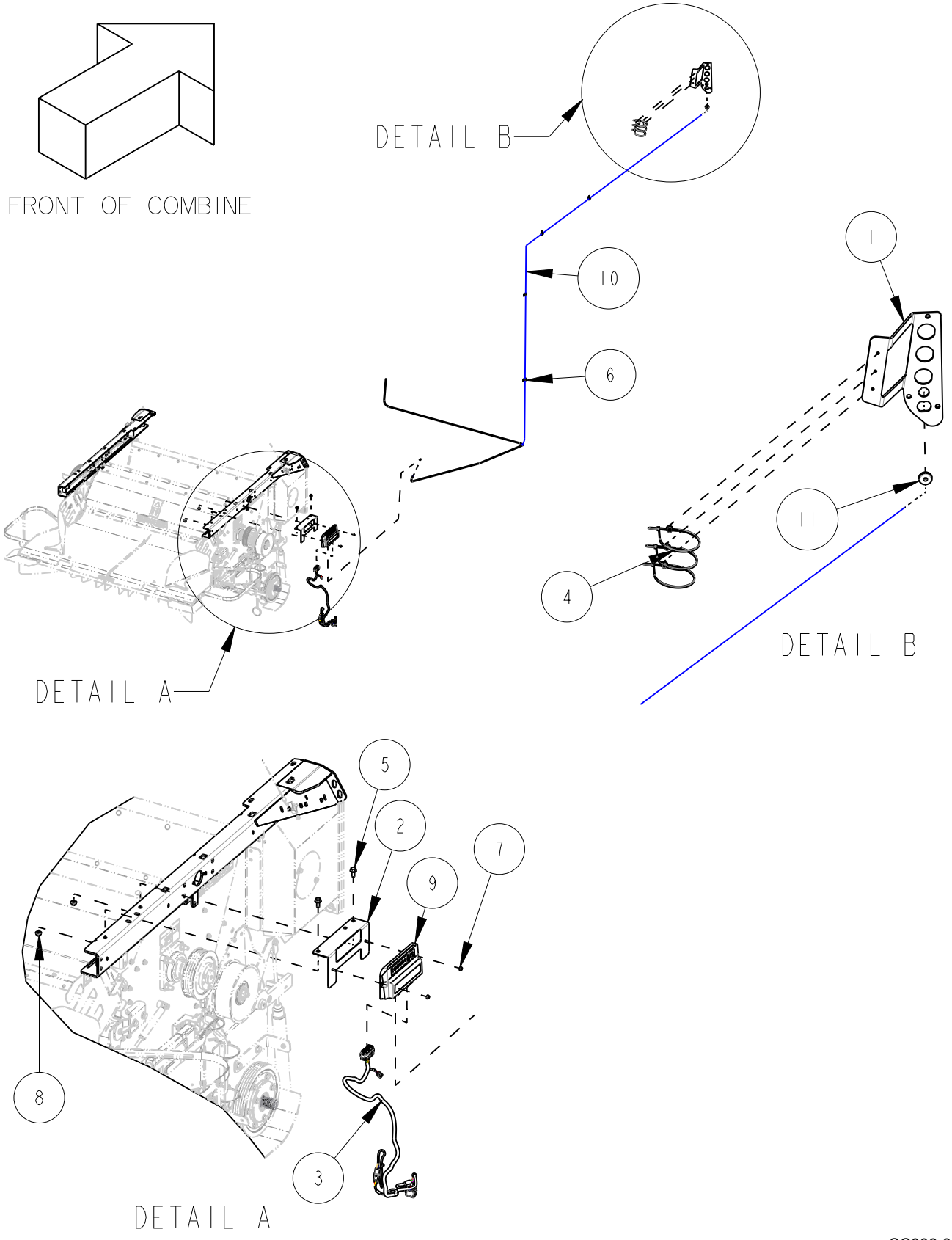
Serial No Range To:  
SCCA0099

ITEM NO.	PART NO.	DESCRIPTION	QTY	NOTE
1	RPII23	HARNESS, MAIN ECU	1	
2	SC378B	BRACKET ECU AFX - BLACK	1	S/S CSII67B
3	H99-08	TUBE STRAP 0.5 OD, .375 HOLE ZN RUBBER	4	
4	N42M-06	NUT LOCK STL M6 CIO YZD DIN980V	2	
5	RPI021	ECU, SCU TAILBOARD CONTROL	1	
6	RPI022	HARNESS, ECU POWER, CAB	1	
7	WIIM-06	WASHER FLAT M6 x 13 x 1.75 YZD	2	
	RPI061	HARNESS, TAILBOARD ACTUATOR	1	FOR CHOPPER MAV
	RPI216	HARNESS, CHOPPER SLIDE ACTUATOR	1	FOR CHOPPER MAV

S/S = SUPERSEDED BY

SC006-05

Indicate implement serial number with any parts order \_\_\_\_\_



SC006-05

# CASE AFX SCU - MAV CHOPPER ECU Control

Page: 8 - 4  
Date: 25 FEB 2022

Serial No Range From:  
SCCA0100

Serial No Range To:  
PRESENT

ITEM NO.	PART NO.	DESCRIPTION	QTY	NOTE
1	CH762B	BULKHEAD CR CAB - BLACK	1	
2	CS1167B	ECU BRACKET CASE CR - BLACK	1	
3	RPI123	HARNESS, MAIN ECU	1	
4	87741307	CABLE TIE, FIR TREE	3	
5	B21M-1025	BOLT FLG M10X25 C8.8 YZD Iso8102	2	
6	H99-08	TUBE STRAP 0.5 OD, .375 HOLE ZN RUBBER	4	
7	N21M-06	NUT FLG M6 C8 YZD Iso4161	2	
8	N21M-10	NUT FLG M10 C8 YZD Iso4161	2	
9	RPI021	ECU, SCU TAILBOARD CONTROL	1	
10	RPI022	HARNESS, ECU POWER, CAB	1	
11	RPI322	SILICONE RBR HIGH TEMP 1" OD, 3.8" ID, 3/16"	1	
	RPI061	HARNESS, TAILBOARD ACTUATOR	1	FOR CHOPPER MAV
	RPI216	HARNESS, CHOPPER SLIDE ACTUATOR	1	FOR CHOPPER MAV

SC006-05

Indicate implement serial number with any parts order \_\_\_\_\_



1



2



3



4



5



6



8

7

Page: 9 - 2  
Date:20JULY2021

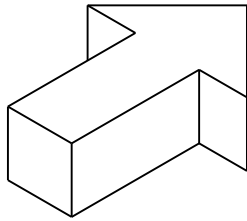
Serial No Range From:  
SCCA0001

Serial No Range To:  
PRESENT

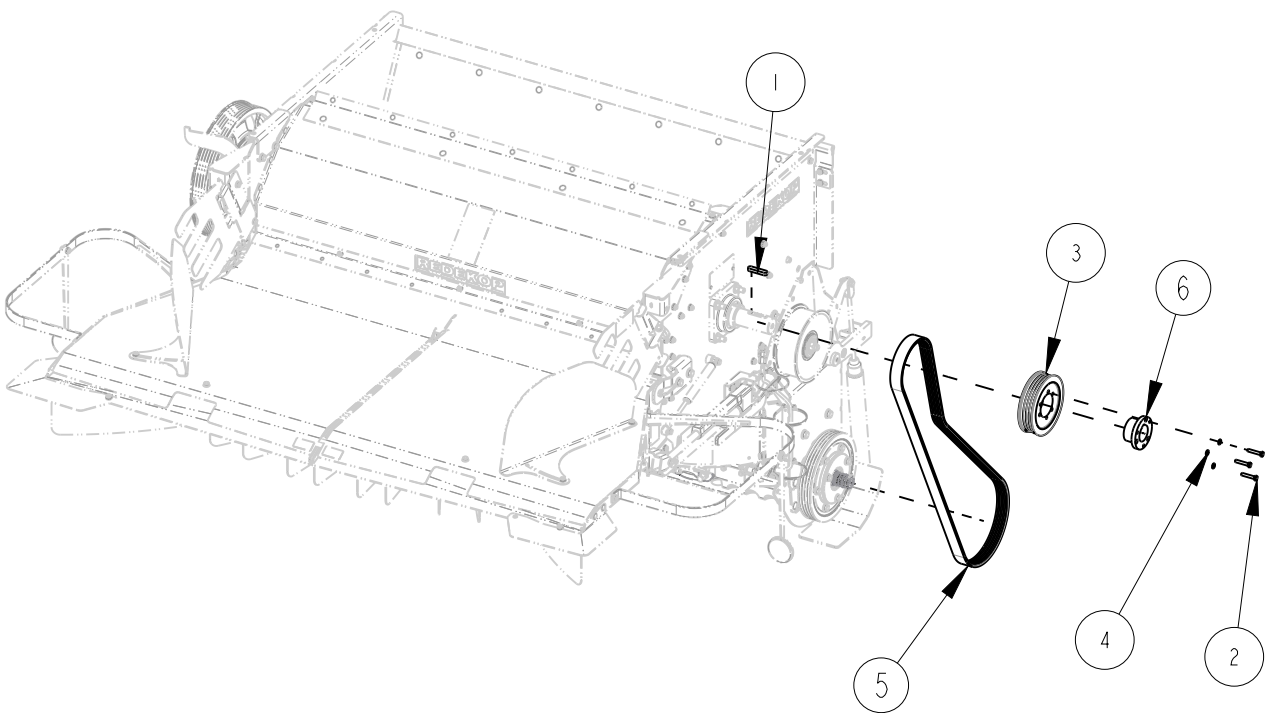
ITEM NO.	PART NO.	DESCRIPTION	QTY	NOTE
1	RPI065	TABLET, MAV SCU	1	
2	RPI229	DOUBLE SOCKET ARM - B SIZE 6"	1	
3	RPI234	BASE, CLAW TYPE - B SIZE 1"	2	
4	RPI126	MOUNT, TABLET W/ ADPATER CAN/USB - ATTACHED TO RAM MOUNT	1	
5	RPI127	HARNESS, LIGHTER PLUG	1	
6	RPI128	HARNESS, CAN EXTENSION 20FT	1	
7	RPI129	TABLET, SERVICE TOOL W/ DUST PROOF CASE	1	DEALER ONLY
8	RPI130	HARNESS MODULE, TOOL	1	DEALER ONLY

SC006-05

Indicate implement serial number with any parts order \_\_\_\_\_



FRONT OF COMBINE





CASE AFX Seed Control Unit

Page: 10 - 2  
Date: 20JULY2021

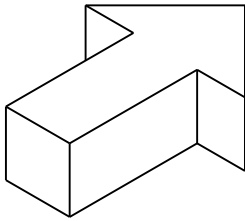
Serial No Range From:  
SCCA0001

Serial No Range To:  
PRESENT

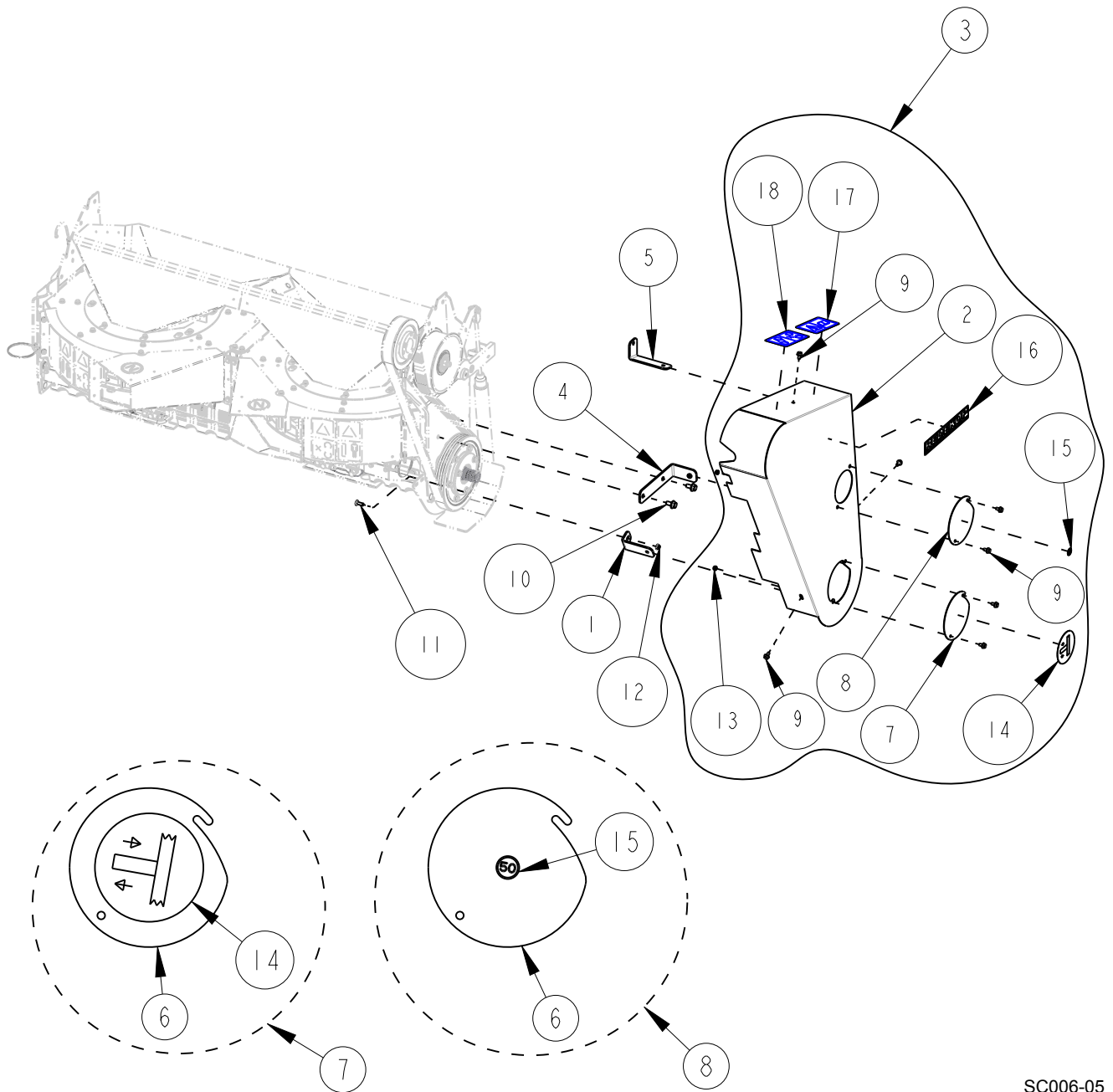
ITEM NO.	PART NO.	DESCRIPTION	QTY	NOTE
1	323624	KEY OVAL 14mm x 9mm x 63mm L Class 5 Plain	1	
2	BIIM-0845	BOLT HEX M8X45 C8.8 YZD Iso4014	3	
3	RP1149	SHEAVE 4M 6.9 SK	1	
4	W2IM-08	WASHER HELICAL LOCK M8	3	
5	BE4M95K	V-BELT 4Mx95L KEVLAR	1	
6	RP29I	TAPERED BUSHING, SK 50mm I.D.	1	

SC006-05

Indicate implement serial number with any parts order \_\_\_\_\_



FRONT OF COMBINE



SC006-05

CASE AFX Seed Control Unit

Page: 11 - 2  
Date: 25FEB2022

Serial No Range From:  
SCCA0001

Serial No Range To:  
PRESENT

ITEM NO.	PART NO.	DESCRIPTION	QTY	NOTE
1	SC410B	BRACKET SHIELD MT 124mm - BLACK	1	
2	SC411B	SHIELD, SCU LWR DRV - BLACK	1	NSS - SC411BA
3	SC411BA	SHIELD, SCU LWR DRV ASSY w/ DCLS - BLACK	1	INCLUDES SC411B, SC475BA, SC476BA, RP240, RP873, RP874
4	SC412B	BRACKET SHIELD MT 236mm - BLACK	1	
5	SC413B	BRACKET SHIELD MT 150mm - BLACK	1	
6	SC475B	COVER SCU SHIELD - BLACK	2	NSS - SC475BA / SC476BA
7	SC475BA	COVER SCU DRIVE w/ DECAL - BLACK	1	INCLUDES SC475B & RPI036
8	SC476BA	COVER SCU SHIELD w/ 50HR DECAL - BLACK	1	INCLUDES SC475B & RPI092
9	B21M-0816	BOLT FLG M8X16 C8.8 YZD Iso8102	7	
10	B21M-1225	BOLT FLG M12X25 C8.8 YZD Iso8102	2	
11	B31M-0825	BOLT RH M8x25 C8.8 YZD ISO8678 Short Neck	1	
12	N21M-08	NUT FLG M8 C8 YZD Iso4161	1	
13	N42M-08	NUT LOCK STL M8 C10 YZD DIN980V	2	
14	RPI036	DECAL SCU DRIVE ENGAGEMENT	1	
15	RPI092	DECAL GREASE 50 HR	1	
16	RP240	DECAL REDEKOP 12" X 2"	1	
17	RP873	DECAL EU SAFETY CHECK SERVICE	1	
18	RP874	DECAL SAFETY BELT KEEP HANDS OUT	1	

NSS = NOT SERVICED SEPARATELY

SC006-05

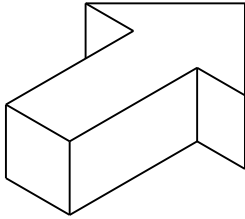
Indicate implement serial number with any parts order

# CASE AFX Seed Control Unit SCU Shipping Frame

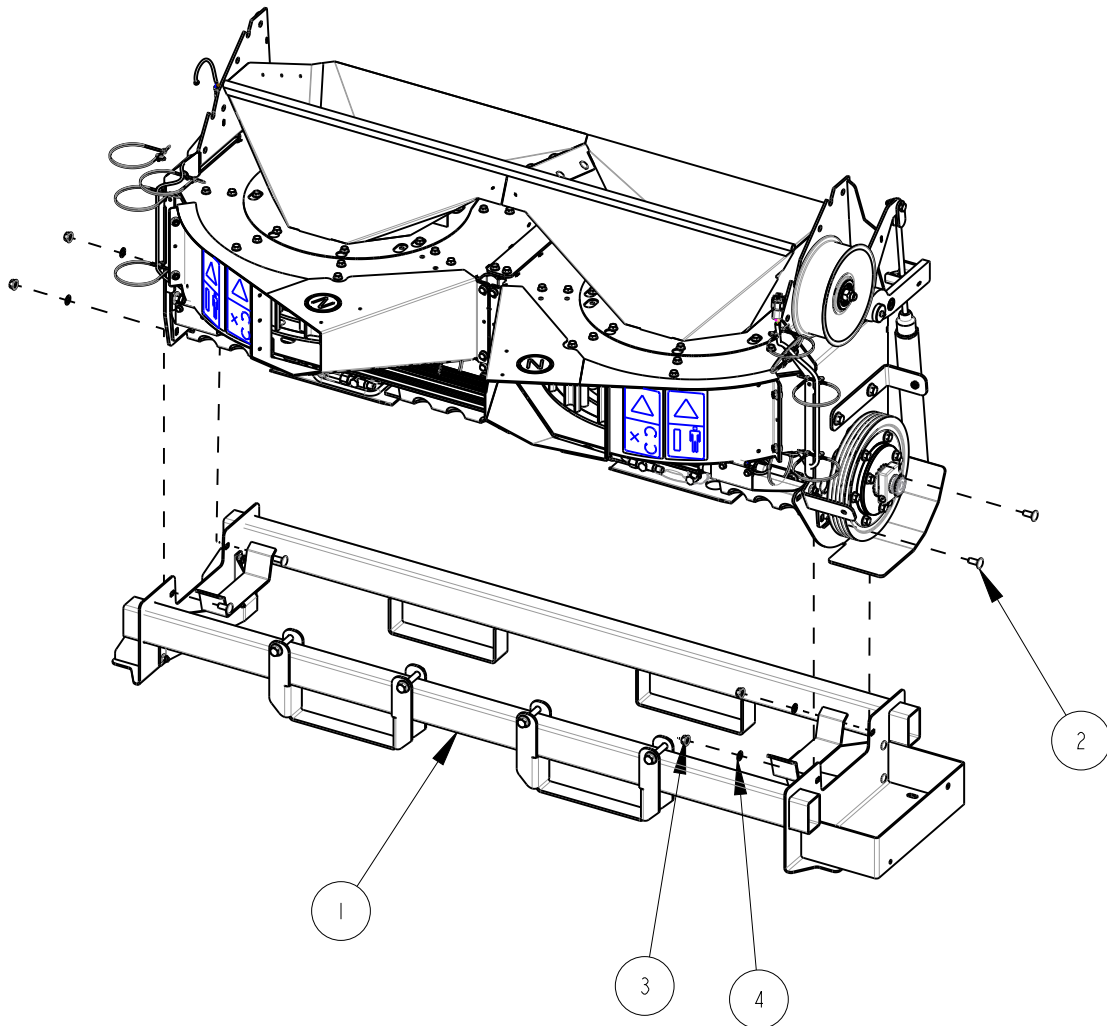
Page: 12 - 1  
Date: 20JULY2021

Serial No Range From:  
SCCA0001

Serial No Range To:  
PRESENT



FRONT OF COMBINE



SC006-05

Indicate implement serial number with any parts order

CASE AFX Seed Control Unit

Page: 12 - 2  
Date: 20JULY2021

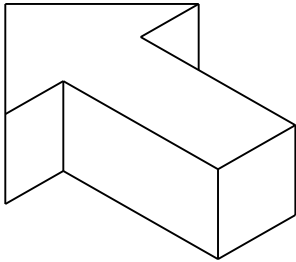
Serial No Range From:  
SCCA0001

Serial No Range To:  
PRESENT

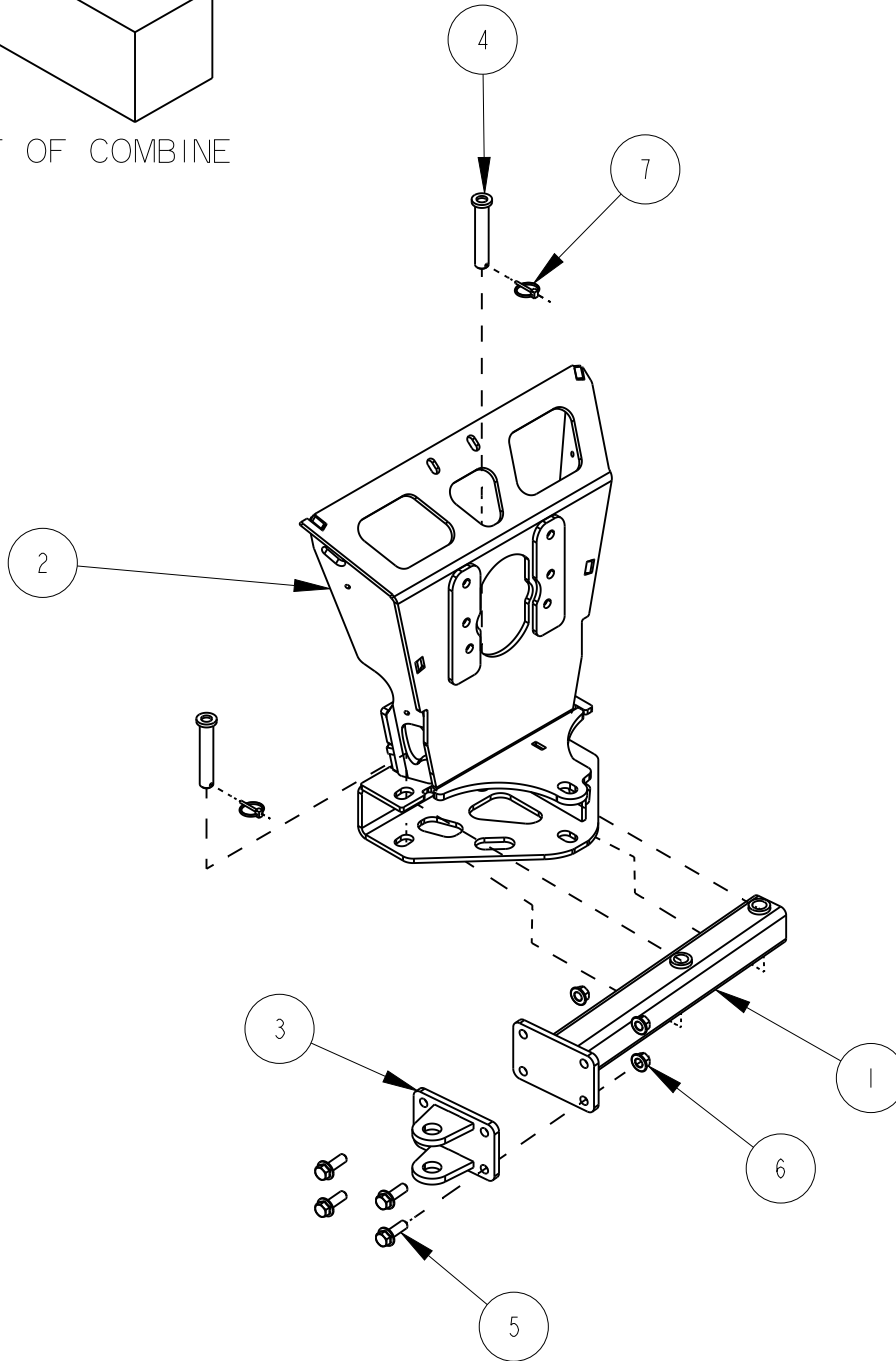
ITEM NO.	PART NO.	DESCRIPTION	QTY	NOTE
1	SC375A	ASSY SCU SHIPPING FRAME NARROW	1	
2	B3IM-1025	BOLT RH M10X25 C8.8 YZD ISO8678 Short Neck	4	
3	N2IM-10	NUT FLG M10 C8 YZD Iso4161	4	
4	N63M-10	NUT PUSH M10 BLACK PH	4	

SC006-05

Indicate implement serial number with any parts order \_\_\_\_\_



FRONT OF COMBINE



850-304 KIT SCU HITCH TOW

Page: 13 - 2  
Date: 25 FEB 2022

Serial No Range From:  
SCCA0001

Serial No Range To:  
PRESENT

ITEM NO.	PART NO.	DESCRIPTION	QTY	NOTE
1	SC330B	ARM, HITCH MOUNT BRKT - BLACK	1	
2	SC419B	FRAME BODY, HITCH TOW SCU - BLACK	1	
3	SC476B	CLEVIS, TOW HITCH - BLACK	1	
4	SC484Z	PIN HITCH CNH - YZD	2	
5	B21M-1650	BOLT FLG M16X50 C8.8 YZD Iso8102	4	
6	N21M-16	NUT FLG M16 C8 YZD Iso4161	4	
7	RPI105	PIN, LYNCH 3/16"X1.25"	2	
	850-304	KIT HITCH SCU		

SC006-05