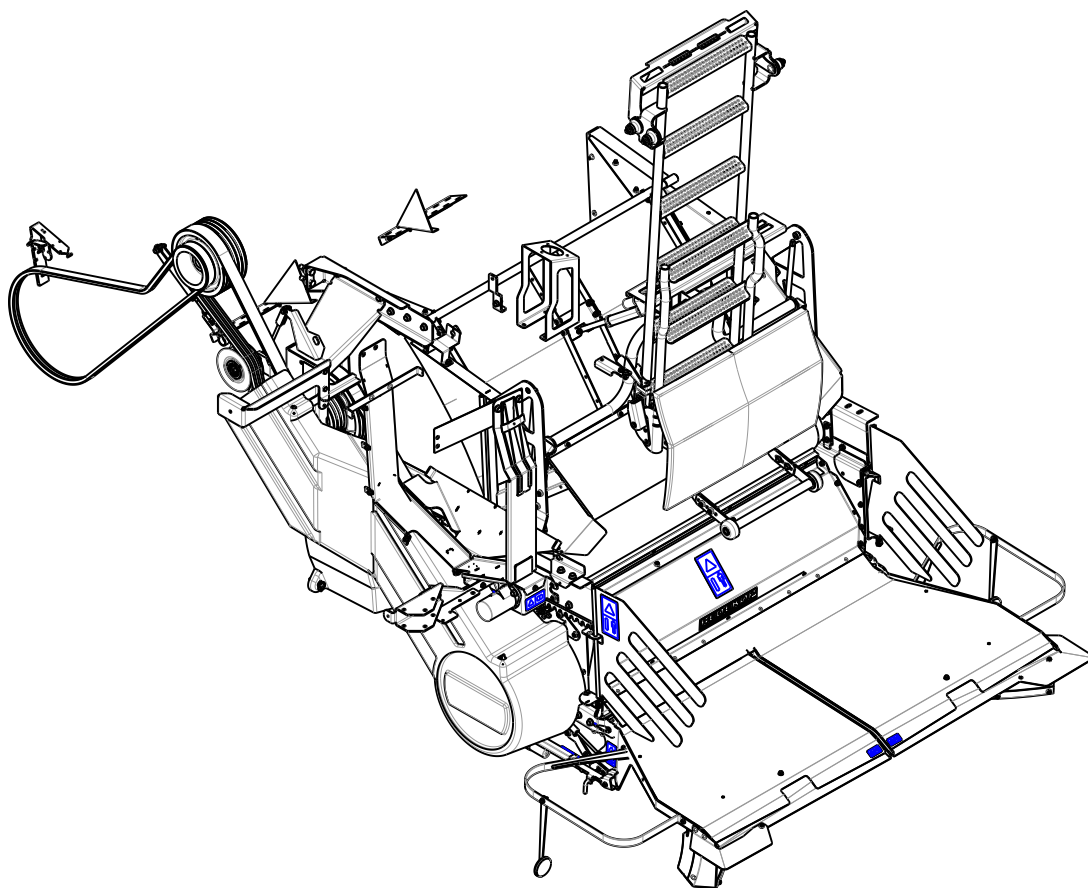


# **REDEKOP™**

Crop Residue Management

**CaseIH 7230-9230, 7240-9240, 7250-9250  
MAV 220-212/211W  
Parts Manual**

**Housing Serial # RM25761 - Present  
Rotor Serial # MR12720 - Present  
Jackshaft Serial #JS277 - Present**



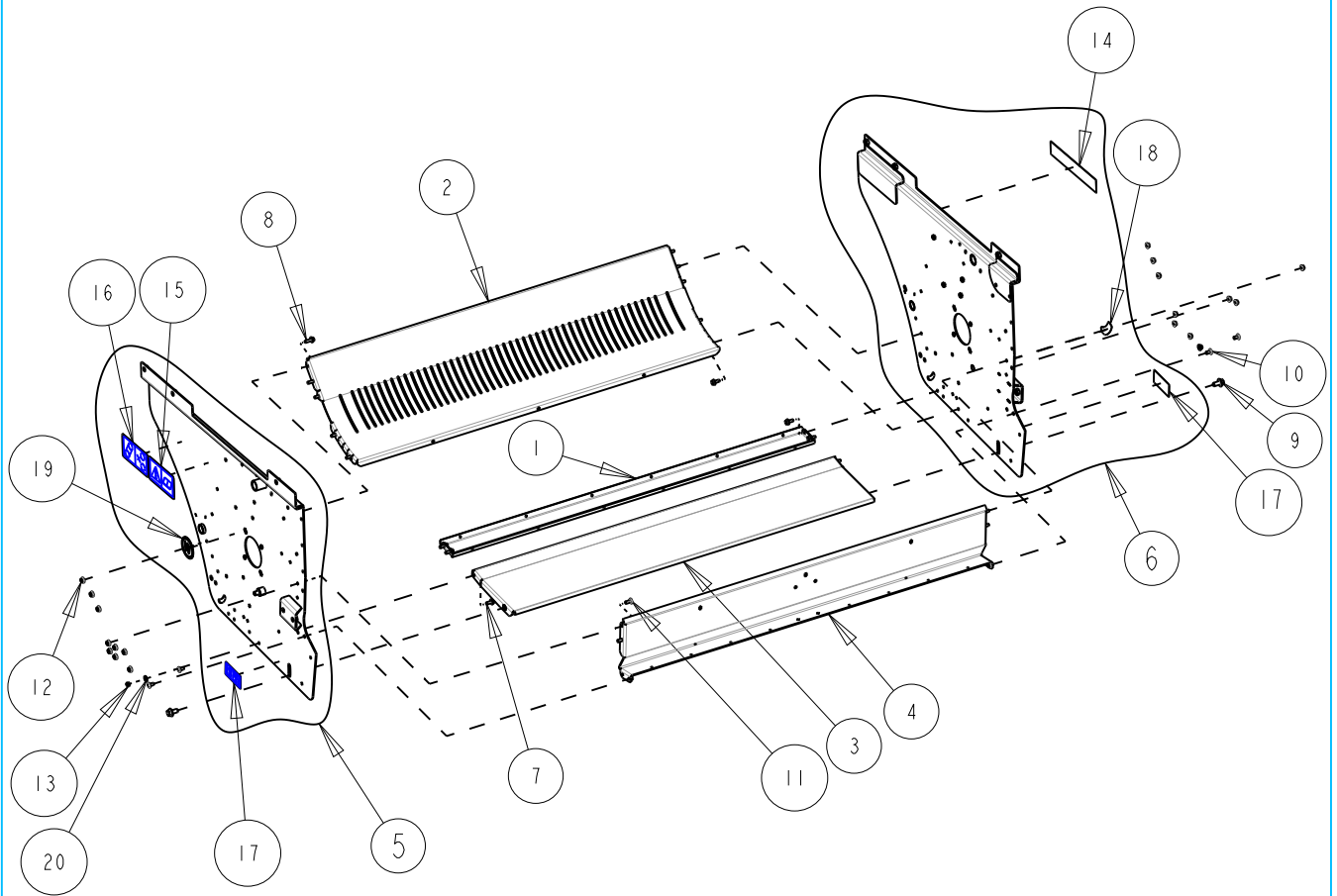
CaseIH 240 Series MAV Chopper  
Chopper Base Mounts

Page: I-I

Serial No Range From:  
RM25761

Serial No Range To:  
PRESENT

Date: 11/05/2021



CaseIH 240 Series MAV Chopper  
Chopper Base Mounts

Page:1-2  
Date:11/05/2021

Serial No Range From:  
RM25761

Serial No Range To:  
PRESENT

ITEM NO.	PART NO.	DESCRIPTION	QTY	NOTE
1	CG160B	KBAR GUARD 55W - BLACK	1	
2	CG422B	FLOOR CHOPPER 55W - BLACK	1	
3	CG424B	FLOOR EXT 55W - BLACK	1	
4	CG426B	CHOPPER RR PANEL 55L - BLACK	1	
5	CS1030BA	SIDEWALL AFX LT W/ DECALS - BLACK	1	C/W RP873, RP896, RP962, RP874
6	CS1031BA	SIDEWALL AFX RT W/ DECALS - BLACK	1	C/W RP942, RP896, RP240
7	B21M-0820	BOLT FLG M8X20 C8.8 YZD Iso8102	15	
8	B21M-0825	BOLT FLG M8X25 C8.8 YZD Iso8102	2	
9	B21M-1225	BOLT FLG M12X25 C8.8 YZD Iso8102	2	
10	B31M-0816	BOLT RH M8x16 C8.8 YZD ISO8678 Short Neck	4	
11	B31M-0820	BOLT RH M8x20 C8.8 YZD ISO8678 Short Neck	4	
12	N21M-08	NUT FLG M8 C8 YZD Iso4161	23	
13	N42M-08	NUT LOCK STL M8 C10 YZD DIN980V	2	
14	RP240	DECAL REDEKOP 12" X 2"	1	
15	RP873	DECAL EU SAFETY CHECK SERVICE	1	
16	RP874	DECAL SAFETY BELT KEEP HANDS OUT	1	
17	RP896	DECAL, WINDROW FLOOR ADJUST	2	
18	RP942	DECAL EU KNIFE BAR ADJ	1	
19	RP962	WIDE SPREAD DECAL "W"	1	
20	WI1M-08	WASHER FLAT M8 x 18.8 x 2.3 YZD	2	

C/W = COMPLETE WITH

Indicate implement serial number with any parts order \_\_\_\_\_

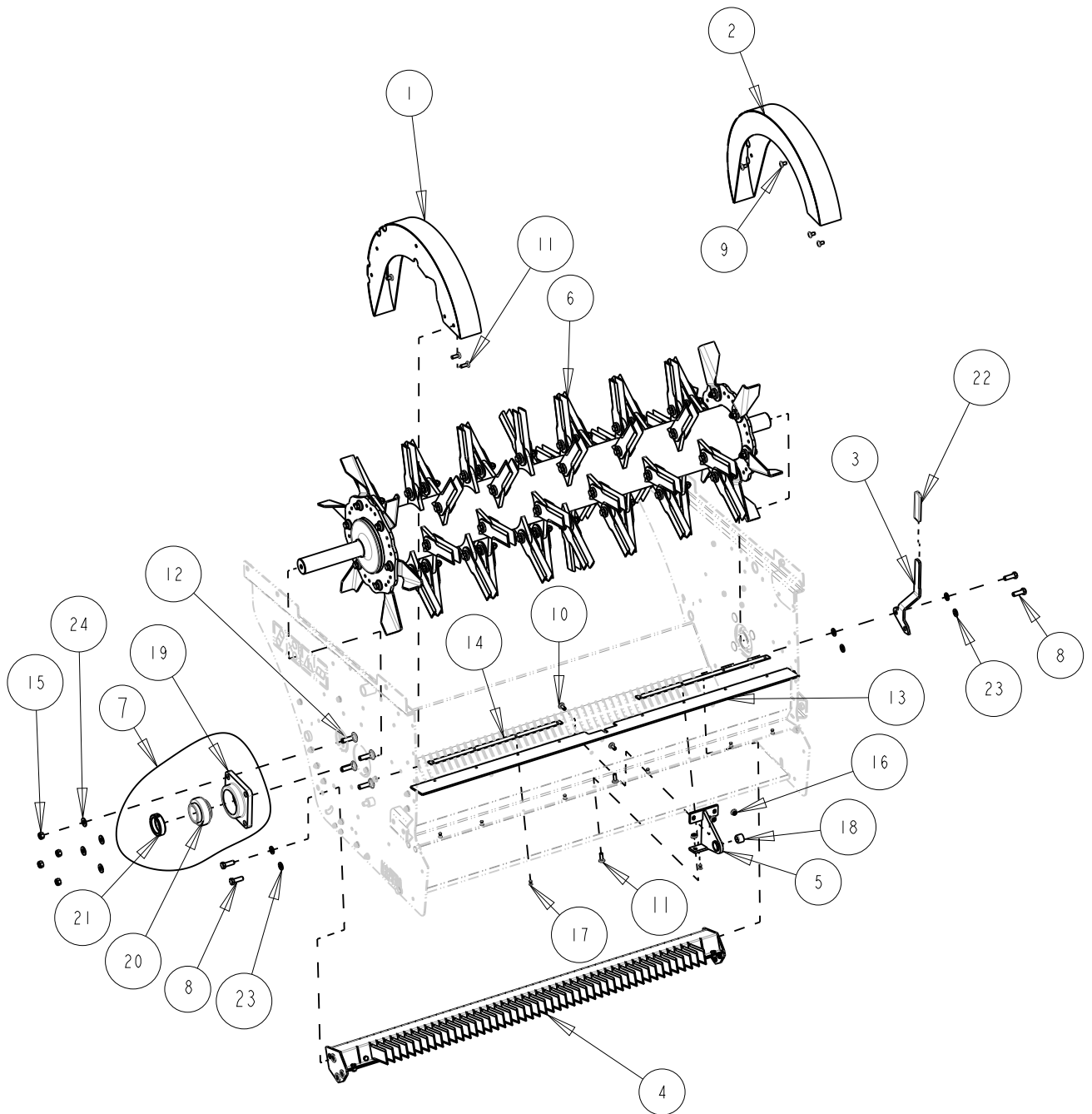
CaseIH 240 Series MAV Chopper  
Chopper Housing Components

Page:2-1

Serial No Range From:  
RM25761

Serial No Range To:  
PRESENT

Date:11/05/2021



Indicate implement serial number with any parts order \_\_\_\_\_



CaseIH 240 Series MAV Chopper  
Chopper Housing Components

Page:2-2

Date:11/05/2021

Serial No Range From:

RM25761

Serial No Range To:

PRESENT

ITEM NO.	PART NO.	DESCRIPTION	QTY	NOTE
1	CG223BL	FAN SHROUD LT - BLACK	1	
2	CG223BR	FAN SHROUD RT - BLACK	1	
3	CG247BA	ASSY KBAR HANDLE w/ INDICATOR - BLACK	1	C/W RP309
4	CG352BA	KNIFE BAR ASSY MAV 55W NO PADDLE - BLACK	1	
5	CG428BA	BRACKET TBOARD SUPPT - BLACK	1	C/W RPI09
6	CG75IBA	ROTOR MAV FG 55W 8R W SPR BLK	1	8 ROW ROTOR WIDE SPREAD
7	RP295A	BEARING ASSY 50mm ID ECL 4B CAST FLG	2	C/W RP238, RP295, RP296
8	BIIM-1235	BOLT HEX M12X35 C8.8 YZD Iso4014	4	
9	B3IM-0816	BOLT RH M8x16 C8.8 YZD ISO8678 Short Neck	6	
10	B3IM-0820	BOLT RH M8x20 C8.8 YZD ISO8678 Short Neck	2	
11	B3IM-0825	BOLT RH M8x25 C8.8 YZD ISO8678 Short Neck	4	
12	B36M-1245	BOLT RH M12x45 C8.8 YZD ISO8677 Long Neck	8	
13	CG226-01	BELT TBOARD SEAL 55W	1	
14	CG228-01	STRAP, BELT SEAL 1420MM	2	
15	NIIM-12	NUT HEX M12 C8 YZD ISO4032	8	
16	N2IM-08	NUT FLG M8 C8 YZD Iso4161	32	
17	RO3-08	RIVET SS 0.188 x .375L	8	
18	RPI09	BUSHING, NYLON	1	
19	RP238	BEARING FLANGE 4B F210	2	NSS - RP295A
20	RP295	BEARING BALL SPH 50mm	2	NSS - RP295A
21	RP296	LOCK COLLAR ECL 50mm ID	2	NSS - RP295A
22	RP309	GRIP	1	NSS - HANDLE ASSEMBLY
23	WIIM-12	WASHER FLAT M12 x 23.5 x 2.4 YZD	8	
24	W3IM-12	WASHER, BELLEVILLE	8	

NSS = NOT SERVICED SEPARATELY C/W = COMPLETE WITH

Indicate implement serial number with any parts order \_\_\_\_\_

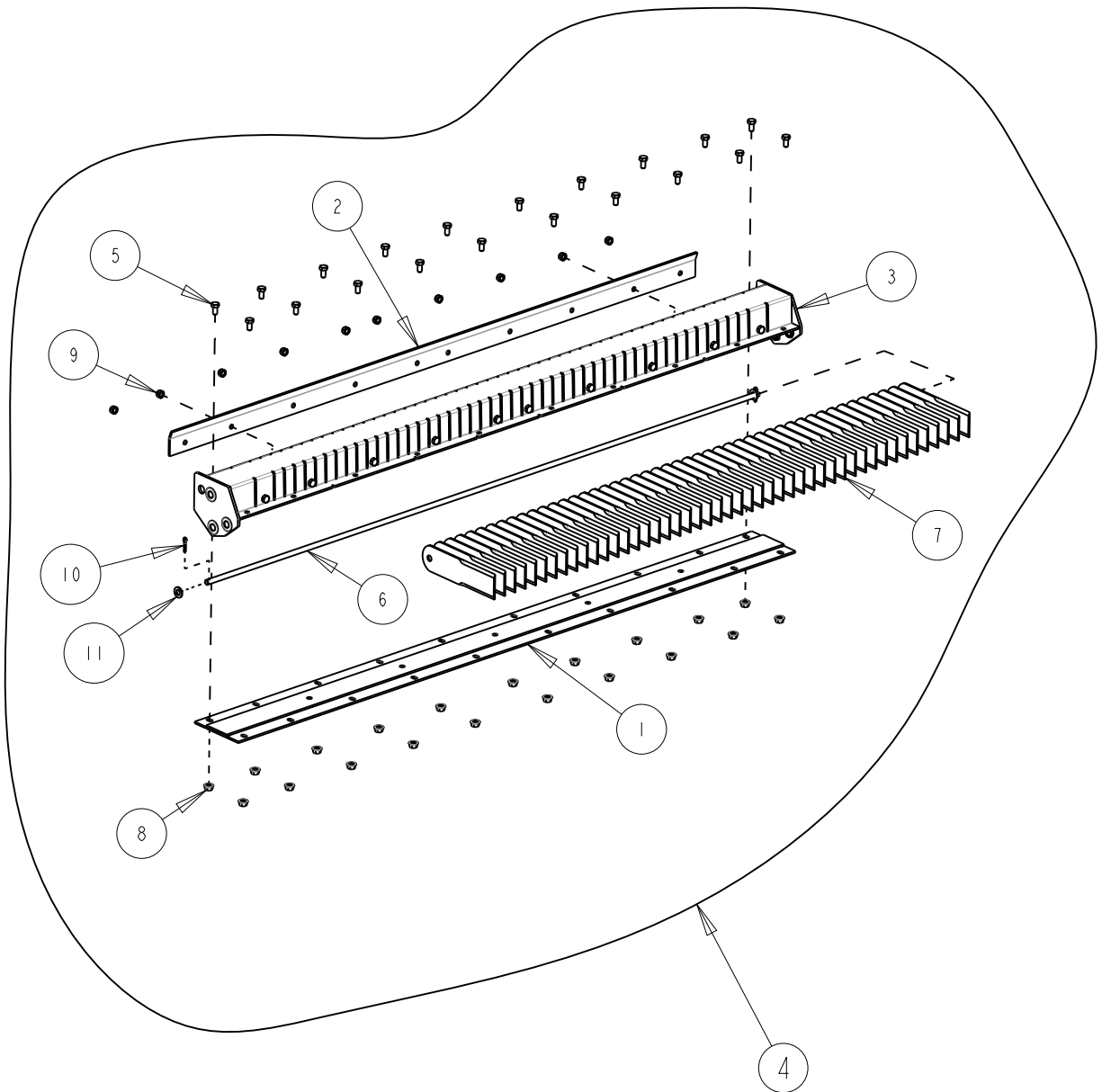
CaseIH 240 Series MAV Chopper  
Knife Bar Components

Page:3-1

Serial No Range From:  
RM25761

Serial No Range To:  
PRESENT

Date: 11/05/2021



L Indicate implement serial number with any parts order \_\_\_\_\_

CaseIH 240 Series MAV Chopper  
Knife Bar Components

Page:3-2

Serial No Range From:

Serial No Range To:

Date:11/05/2021

RM25761

PRESENT

ITEM NO.	PART NO.	DESCRIPTION	QTY	NOTE
1	CGI52B	BACKPLATE KNIFE BAR W 55L - BLACK	1	
2	CGI54B	BAR, PRESS PLATE 55W - BLACK	1	
3	CG351B	FRAME KNIFE BAR /W 55L - BLACK	1	
4	CG352BA	KNIFE BAR ASSY MAV 55W NO PADDLE - BLACK	1	
5	BIIM-0816	BOLT HEX M8X16 C8.8 YZD Iso4014	20	
6	CGI53-01	ROD, KNIFE BAR 55L	1	FOR 1420MM CHOPPER
7	HA700	BLADE STR KNIFE BAR	47	NSS - BK700
8	N2IM-08	NUT FLG M8 C8 YZD Iso4161	20	
9	N42M-08	NUT LOCK STL M8 C10 YZD DIN980V	10	
10	P2IM-0322	PIN COTTER M3X22	2	
11	WIIM-10	WASHER FLAT M10 x 20 x 2.3 YZD	2	
	BK700	BLADE KIT HA700 (10)	5	

NSS = NOT SERVICED SEPARATELY

Indicate implement serial number with any parts order \_\_\_\_\_

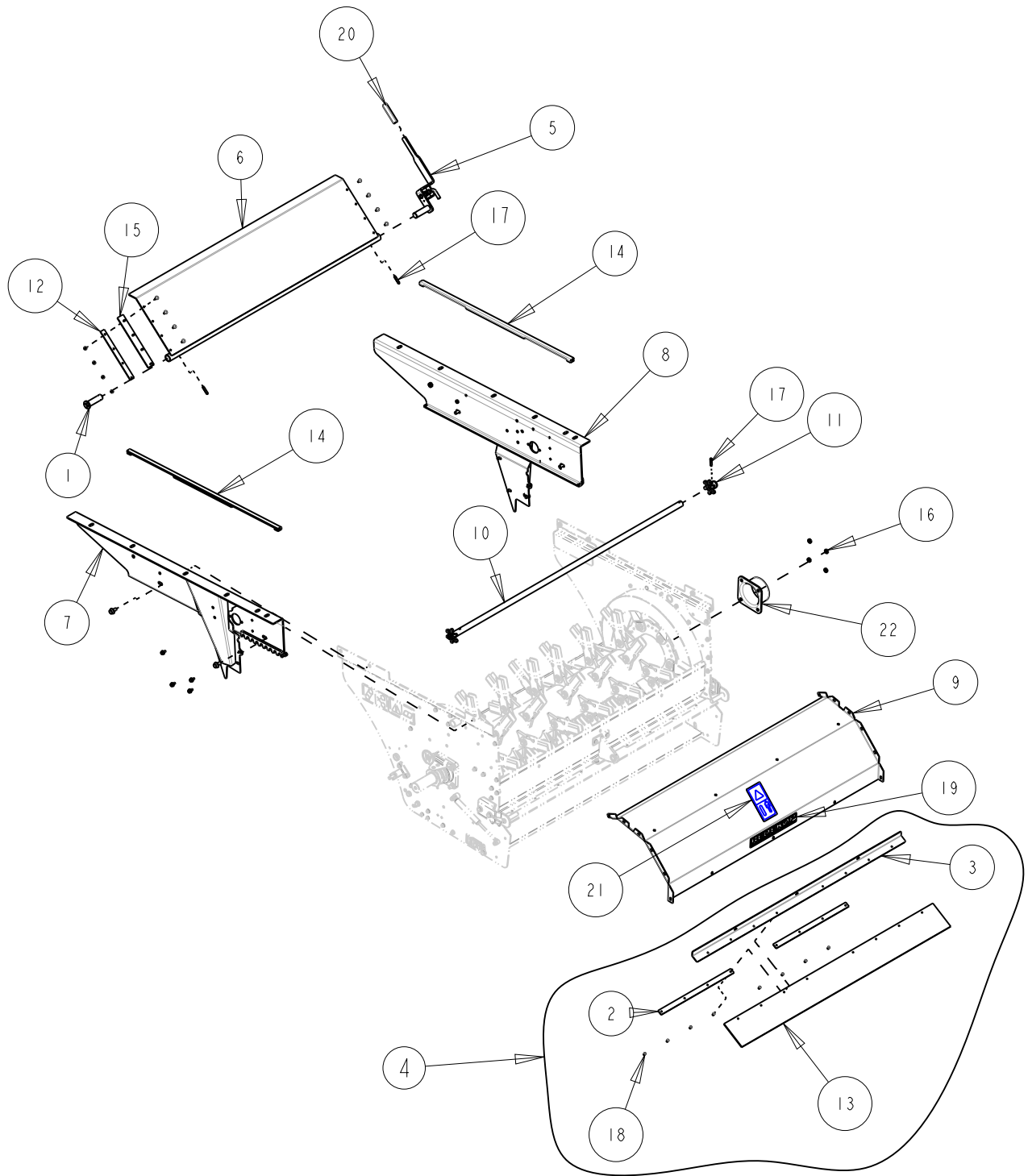
CaseIH 240 Series MAV Chopper  
Chopper Upper Mounts

Page:4-1

Date:11/05/2021

Serial No Range From:  
RM25761

Serial No Range To:  
PRESENT



L Indicate implement serial number with any parts order \_\_\_\_\_

CaseIH 240 Series MAV Chopper  
Chopper Upper Mounts

Page:4-2

Serial No Range From:

Serial No Range To:

Date:11/05/2021

RM25761

PRESENT

ITEM NO.	PART NO.	DESCRIPTION	QTY	NOTE
1	CA443Z	PIN CHAFF DOOR PVT YZD	1	
2	CG228B	STRAP, BELT SEAL 55W - BLACK	2	
3	CG463B	BRACKET TBOARD SEAL 55W - BLACK	1	
4	CG463BA	SEAL ASSY TOP TBOARD 55W - BLACK	1	
5	CG475BA	HANDLE ASSY 13 5/8 - BLACK	1	
6	CS1038BA	DOOR ASSY CASE AFX - BLACK	1	
7	CS1042BL	SIDEWALL UPPER LT AFX BLK	1	
8	CS1042BR	SIDEWALL UPPER RT AFX BLK	1	
9	CS564BA	HOOD CHOPPER 55W W/ DECALS - BLACK	1	C/W RP872, RP240
10	CS569B	CHOPPER SLIDE SHAFT - BLACK	1	
11	CS570B	CHOPPER SLIDE GEAR - BLACK	1	
12	CS589B	STRAP CHAFF DOOR CASE AFX - BLACK	2	
13	CG446-01	BELT TBOARD SEAL 55W	1	
14	CS1043-01	PLATE SLIDER AFX	2	
15	CS547-01	BELT DOOR SEAL 5H 19.5L	2	
16	N31M-12	NUT JAM M12 C8 YZD Iso4035	6	
17	PI1M-0840	PIN ROLL 08 X 40	3	
18	RO3-08	RIVET SS 0.188 x .375L	16	
19	RP240	DECAL REDEKOP 12" X 2"	2	
20	RP309	GRIP	2	NSS - HANDLE ASSEMBLY
21	RP872	DECAL SAFETY PROJECTILE HAZARD	1	
22	RPI002	CAP BEARING ROTOR END	1	
23	W31M-12	WASHER, BELLEVILLE	8	

NSS = NOT SERVICED SEPARATELY C/W = COMPLETE WITH

Indicate implement serial number with any parts order \_\_\_\_\_

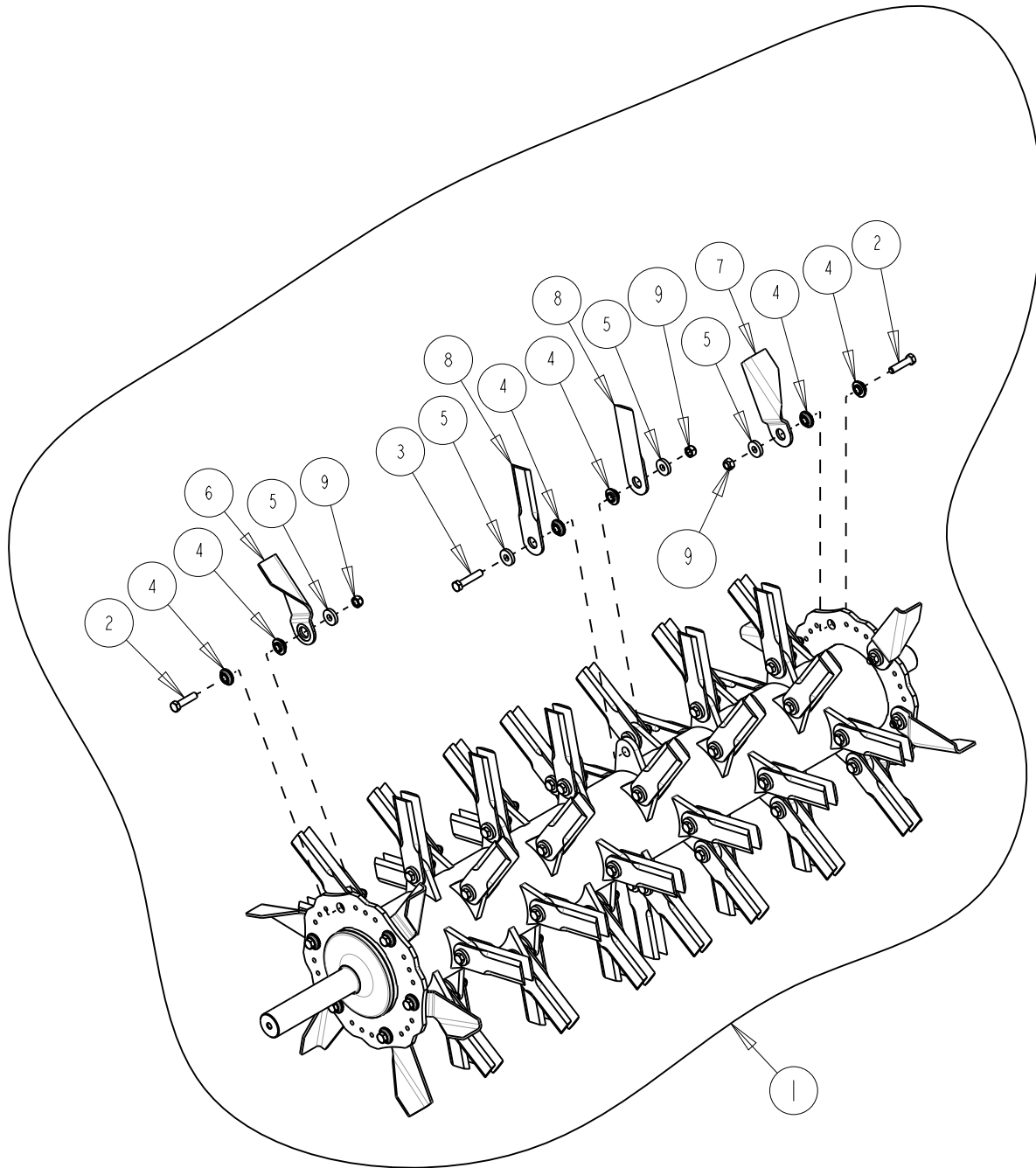
CaseIH 240 Series MAV Chopper  
Chopper Rotor Components

Page:5-1

Serial No Range From:  
MRI2721

Serial No Range To:  
PRESENT

Date:11/05/2021



L Indicate implement serial number with any parts order \_\_\_\_\_

CaseIH 240 Series MAV Chopper  
Chopper Rotor Components

Page:5-2  
Date:11/05/2021

Serial No Range From:  
MRI2721

Serial No Range To:  
PRESENT

ITEM NO.	PART NO.	DESCRIPTION	QTY	NOTE
1	CG751BA	ROTOR MAV FG 55W 8R W SPR BLK	1	8 ROW ROTOR WIDE SPREAD
2	BI2M-1250	BOLT HEX M12X50 C10.9 YZD Iso4014	12	
3	BI2M-1260	BOLT HEX M12X60 C10.9 YZD Iso4014	48	
4	HA553	BUSHING, MAV STD	120	NSS - BK553
5	HA555	WASHER, ROTOR 1.25 O.D.	108	NSS - BK555
6	HA570L	BLADE FAN 2 INCH LT	6	NSS - BK570L
7	HA570R	BLADE FAN 2 INCH RT	6	NSS - BK570R
8	HA650C	BLADE STR MAV CARBIDE	96	NSS - BK650
9	N42M-12	NUT LOCK STL M12 C10 YZD DIN980V	60	
1	CG752BA	ROTOR MAV FG 55W 8R STD SPR BLK	1	8 ROW ROTOR STANDARD SPREAD
1	CG731BA	ROTOR MAV FG 55W 4R W SPR BLK	1	4 ROW ROTOR WIDE SPREAD
1	CG730BA	ROTOR MAV FG 55W 4R STD SPR BLK	1	4 ROW ROTOR STANDRAD SPREAD
4	BK553	BUSHING KIT - HA553 (20)	7	
5	BK555	WASHER KIT - HA555 (20)	6	
6	BK570L	BLADE KIT - HA570L (6-LEFT)	1	LEFT BLADES WIDE SPREAD
6	HA550L	BLADE FAN 1.5 INCH LT	6	NSS - ORDER BK550L
6	BK550L	BLADE KIT - HA550L (6-LEFT)	1	LEFT BLADES STANDARD SPREAD
7	BK570R	BLADE KIT - HA570R (6-RIGHT)	1	RIGHT BLADES WIDE SPREAD
7	HA550R	BLADE FAN 1.5 INCH RT	6	NSS - ORDER BK550R
7	BK550R	BLADE KIT - HA550R (6-RIGHT)	1	RIGHT BLADES STANDARD SPREAD
8	BK650C	BLADE KIT - HA650C (8)	12	

NSS = NOT SERVICED SEPARATELY

Indicate implement serial number with any parts order \_\_\_\_\_

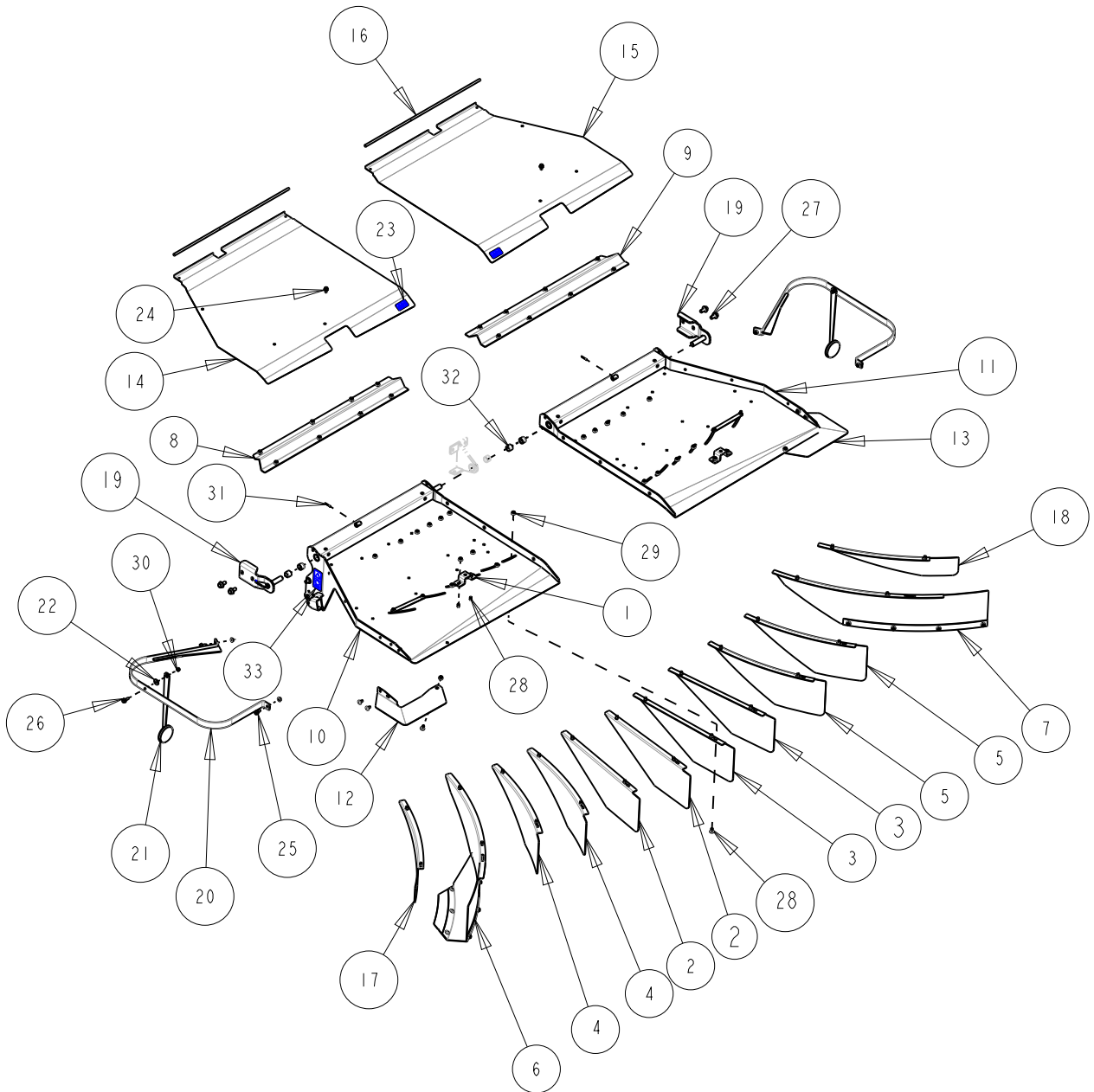
CaseIH 240 Series MAV Chopper  
Chopper Tailboard Components - Wide Spread

Page:6-1

Serial No Range From:  
RM25761

Serial No Range To:  
PRESENT

Date:11/05/2021



Indicate implement serial number with any parts order \_\_\_\_\_



CaseIH 240 Series MAV Chopper  
Chopper Tailboard Components - Wide Spread

Page:6-2  
Date:11/05/2021

Serial No Range From:  
RM25761

Serial No Range To:  
PRESENT

ITEM NO.	PART NO.	DESCRIPTION	QTY	NOTE
1	CC331B	BRACKET TBOARD COVER LATCH - BLACK	2	
2	CG116BL	FIN, STR 22L LT - BLACK	2	
3	CG116BR	FIN, STR 22L RT - BLACK	2	
4	CG120BL	FIN, CRV 22L LT - BLACK	2	
5	CG120BR	FIN, CRV 22L RT - BLACK	2	
6	CG237BAL	FIN 40L LT WIDE SPREAD - BLACK	1	
7	CG237BAR	FIN 40L RT WIDE SPREAD - BLACK	1	
8	CG357BL	SUPPORT TBOARD LT 55W - BLACK	1	
9	CG357BR	SUPPORT TBOARD RT 55W - BLACK	1	
10	CG477BL	TAILBOARD 55W LT - BLACK	1	
11	CG477BR	TAILBOARD 55W RT - BLACK	1	
12	CG478BL	DEFLECTOR, WS LT - BLACK	1	
13	CG478CR	DEFLECTOR, WS RT - CHARCOAL	1	
14	CG481BL	PANEL TBOARD 55W LT - BLACK	1	NSS - CG481BAL
15	CG481BR	PANEL TBOARD 55W RT - BLACK	1	NSS - CG481BAR
16	CG482Z	ROD TBOARD COVER 55W YZD	2	
17	CG761BL	FIN, CRV LT 19L X 4H WS - BLACK	1	
18	CG761BR	FIN, CRV RT 19L x 4H WS - BLACK	1	
19	CS1032B	PIN TAILBOARD PIVOT - BLACK	2	
20	CS171B	GUARD, TAILBOARD - BLACK	2	
21	CS990A	REFLECTOR ASSEMBLY	2	
22	CS991Z	SPACER REFLECTOR EU - YZD	2	
23	84394351	DECAL SAFETY PINCH POINT	2	
24	B21M-0816	BOLT FLG M8X16 C8.8 YZD Iso8102	2	
25	B21M-0820	BOLT FLG M8X20 C8.8 YZD Iso8102	4	
26	B21M-0825	BOLT FLG M8X25 C8.8 YZD Iso8102	2	
27	B21M-1225	BOLT FLG M12X25 C8.8 YZD Iso8102	4	
28	B31M-0816	BOLT RH M8x16 C8.8 YZD ISO8678 Short Neck	51	
29	N21M-08	NUT FLG M8 C8 YZD Iso4161	54	
30	N41M-08	NUT LOCK STL M8 C8 YZD DIN980V	2	
31	P21M-0228	PIN COTTER M2X28	2	
32	RPI09	BUSHING, NYLON	7	
33	RPI060	DECAL SAFETY RUN ON	2	
	CG120K	KIT CONVERSION WIDE TO STANDARD SPREAD	1	INCLUDES FAN BLADES AND FINS

NSS = NOT SERVICED SEPARATELY

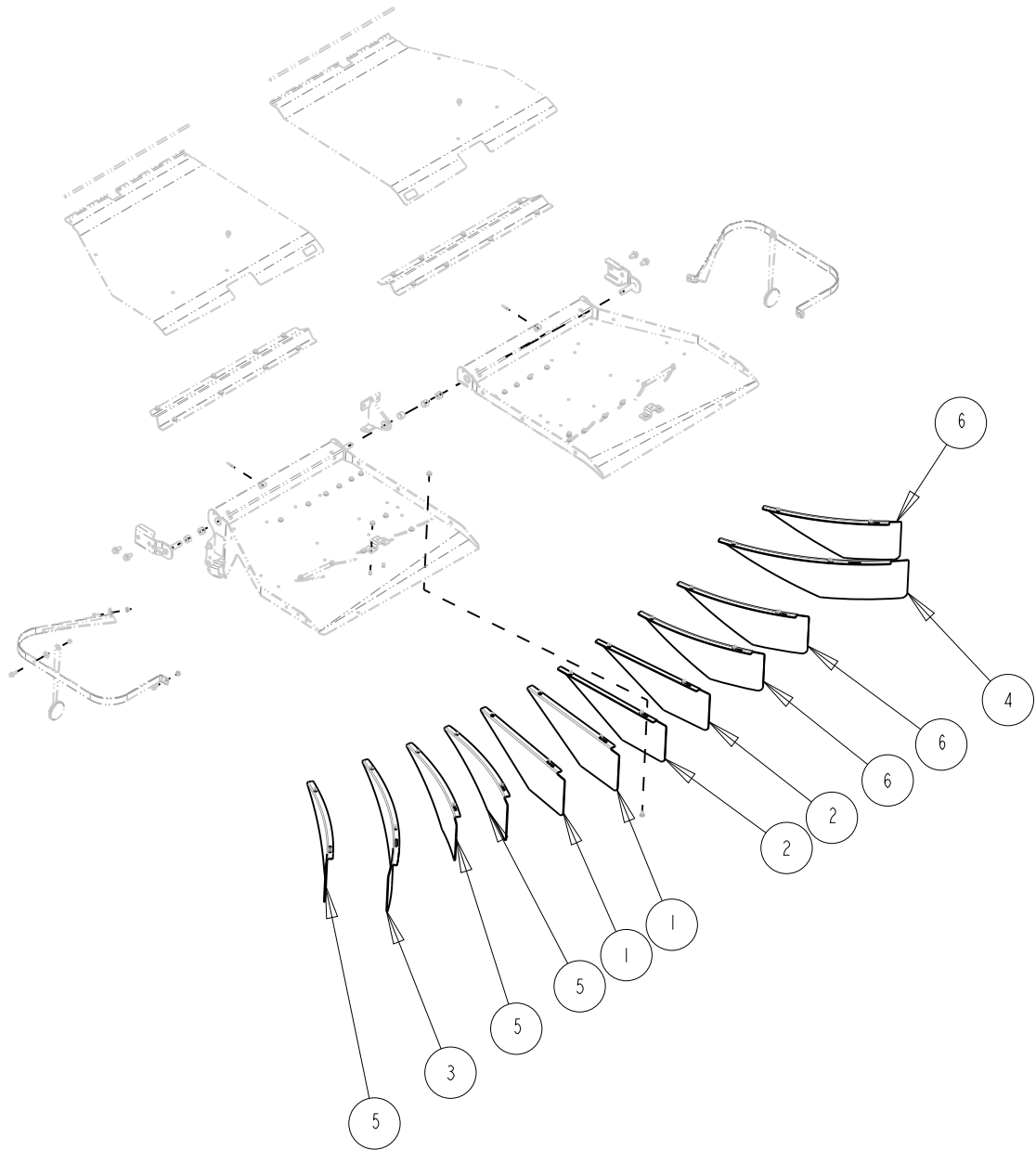
Indicate implement serial number with any parts order \_\_\_\_\_

CaseIH 240 Series MAV Chopper  
Chopper Tailboard Components - Standard Spread

Page:6-3  
Date:11/05/2021

Serial No Range From:  
RM25761

Serial No Range To:  
PRESENT



L Indicate implement serial number with any parts order \_\_\_\_\_

CaseIH 240 Series MAV Chopper  
 Chopper Tailboard Components - Narrow Spread

Page:6-4  
 Date:11/05/2021

Serial No Range From:  
 RM25761

Serial No Range To:  
 PRESENT

ITEM NO.	PART NO.	DESCRIPTION	QTY	NOTE
1	CG116BL	FIN, STR 22L LT - BLACK	2	
2	CG116BR	FIN, STR 22L RT - BLACK	2	
3	CG119BL	FIN, CRV LT 3IL - BLACK	1	
4	CG119BR	FIN, CRV RT 3IL - BLACK	1	
5	CG120BL	FIN, CRV 22L LT - BLACK	3	
6	CG120BR	FIN, CRV 22L RT - BLACK	3	
	810-060	KIT MAV WIDE SPREAD UPGRADE	1	INCLUDES FAN BLADES AND FINS

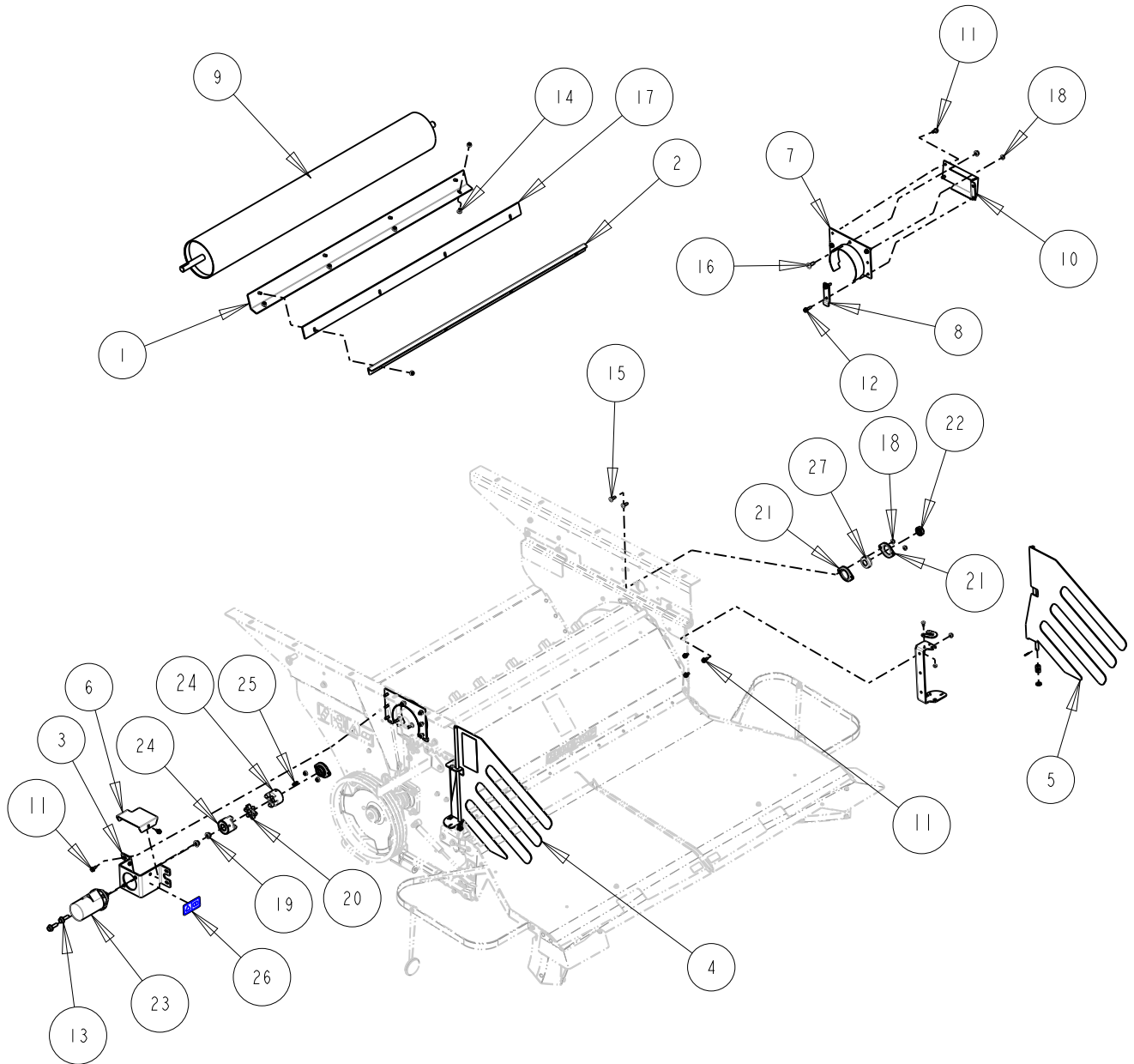
CaseIH 240 Series MAV Chopper  
Windrow Components

Page: 7-1

Serial No Range From:  
RM25761

Serial No Range To:  
PRESENT

Date: 11/05/2021



Indicate implement serial number with any parts order \_\_\_\_\_

CaseIH 240 Series MAV Chopper  
Windrow Components

Page:7-2

Serial No Range From:

Serial No Range To:

Date:11/05/2021

RM25761

PRESENT

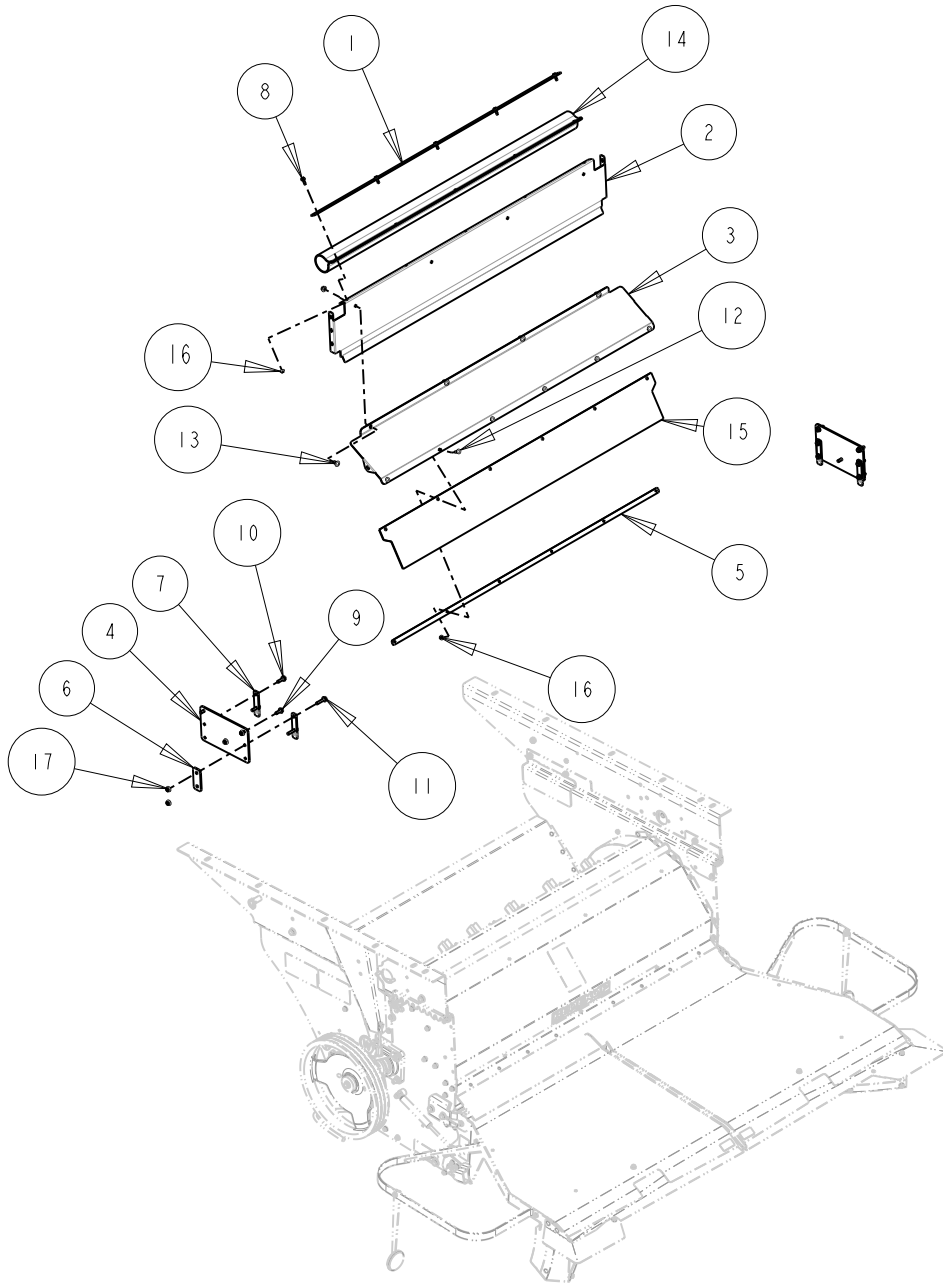
ITEM NO.	PART NO.	DESCRIPTION	QTY	NOTE
1	CH259B	MOUNT ROLLER STRIPPER 67W - BLK	1	
2	CH272B	BRACKET ROLLER WIPER 67W - BLK	1	
3	CSIO45B	BRACKET HYD MOTOR MT - BLK	1	
4	CSIO65BAL	ASSY WINDROW RAKE LT - BLACK	1	
5	CSIO65BAR	ASSY WINDROW RAKE RT - BLACK	1	
6	CS556B	COVER HYD MOTOR COUPLER - BLK	1	
7	CS558B	TUBE DISCHARGE COVER - BLACK	2	
8	CS559B	SUPPORT TUBE DISCHARGE COVER BRACKET - BLK4		
9	CS568B	ROLLER DISCHARGE AFX - BLACK	1	
10	CS571B	COVER SHAFT END NON DRV -BLK	1	
11	B2IM-0820	BOLT FLG M8X20 C8.8 YZD Iso8102	12	
12	B2IM-0830	BOLT FLG M8X30 C8.8 YZD Iso8102	8	
13	B2IM-1240	BOLT FLG M12X40 C8.8 YZD Iso8102	2	
14	B3IM-0816	BOLT RH M8x16 C8.8 YZD ISO8678 Short Neck	6	
15	B3IM-0825	BOLT RH M8x25 C8.8 YZD ISO8678 Short Neck	4	
16	B3IM-1030	BOLT RH M10X30 C8.8 YZD ISO8678 Short Neck	2	
17	CH260-01	WEAR STRIP 55W	1	
18	N2IM-08	NUT FLG M8 C8 YZD Iso4161	33	
19	N2IM-12	NUT FLG M12 C8 YZD Iso4161	2	
20	RPI25	SPIDER JAW COUPLING L100s	1	
21	RPI77	FLANGE FMD STL 2B 1.0 BRG	4	
22	RPI79	LOCK COLLAR ECL 1.0 ID	2	
23	RPI80	MOTOR HYD EATON H 5.9 2B lin Shaft	1	
24	RPI81	COUPLING 3 JAW L100s 1.00 ID	2	
25	RP932	KEY SQUARE .25 x .25 x 1.1 L	1	
26	RPI059	DECAL SAFETY HYDRAULIC HAZARD	1	
27	RPI78-01	BEARING BALL SPH 1.00 ID ECL AEL	2	

CaseIH 240 Series MAV Chopper  
Non-Windrow Components

Page: 7-3  
Date: 11/05/2021

Serial No Range From:  
RM25761

Serial No Range To:  
PRESENT



L Indicate implement serial number with any parts order \_\_\_\_\_

CaseIH 240 Series MAV Chopper  
Non-Windrow Components

Page: 7-4

Serial No Range From:

Serial No Range To:

Date: 11/05/2021

RM25761

PRESENT

ITEM NO.	PART NO.	DESCRIPTION	QTY	NOTE
1	CS1072B	STRAP BELT SEAL AFX STRAW DOOR - BLK	1	
2	CS631B	WALL CHP REAR 55W - BLK	1	
3	CS637B	COVER PLATE CHPR HOOD - BLK	1	
4	CS638B	PANEL SIDE LT AFX - BLK	2	
5	CS642B	STRAP REAR RUBBER - BLK	1	
6	CS704B	AFX SHIELD MOUNT SPACER - BLK	1	
7	CS903B	SUPPORT TUBE DISCHARGE COVER BRACKET - BLK4		
8	B2IM-0620	BOLT FLG M6X20 C8.8 YZD Iso8102	5	
9	B2IM-0825	BOLT FLG M8X25 C8.8 YZD Iso8102	4	
10	B2IM-0830	BOLT FLG M8X30 C8.8 YZD Iso8102	6	
11	B2IM-0840	BOLT FLG M8X40 C8.8 YZD Iso8102	2	
12	B3IM-0620	BOLT RH M6X20 C8.8 YZD ISO8678 Short Neck	6	
13	B3IM-0816	BOLT RH M8x16 C8.8 YZD ISO8678 Short Neck	6	
14	CS1071-01	BELT AFX NA DOOR SEAL	1	
15	CS902-01	BELTING COVER REAR AFX	1	
16	N2IM-06	NUT FLG M6 C8 YZD Iso4161	11	
17	N2IM-08	NUT FLG M8 C8 YZD Iso4161	22	

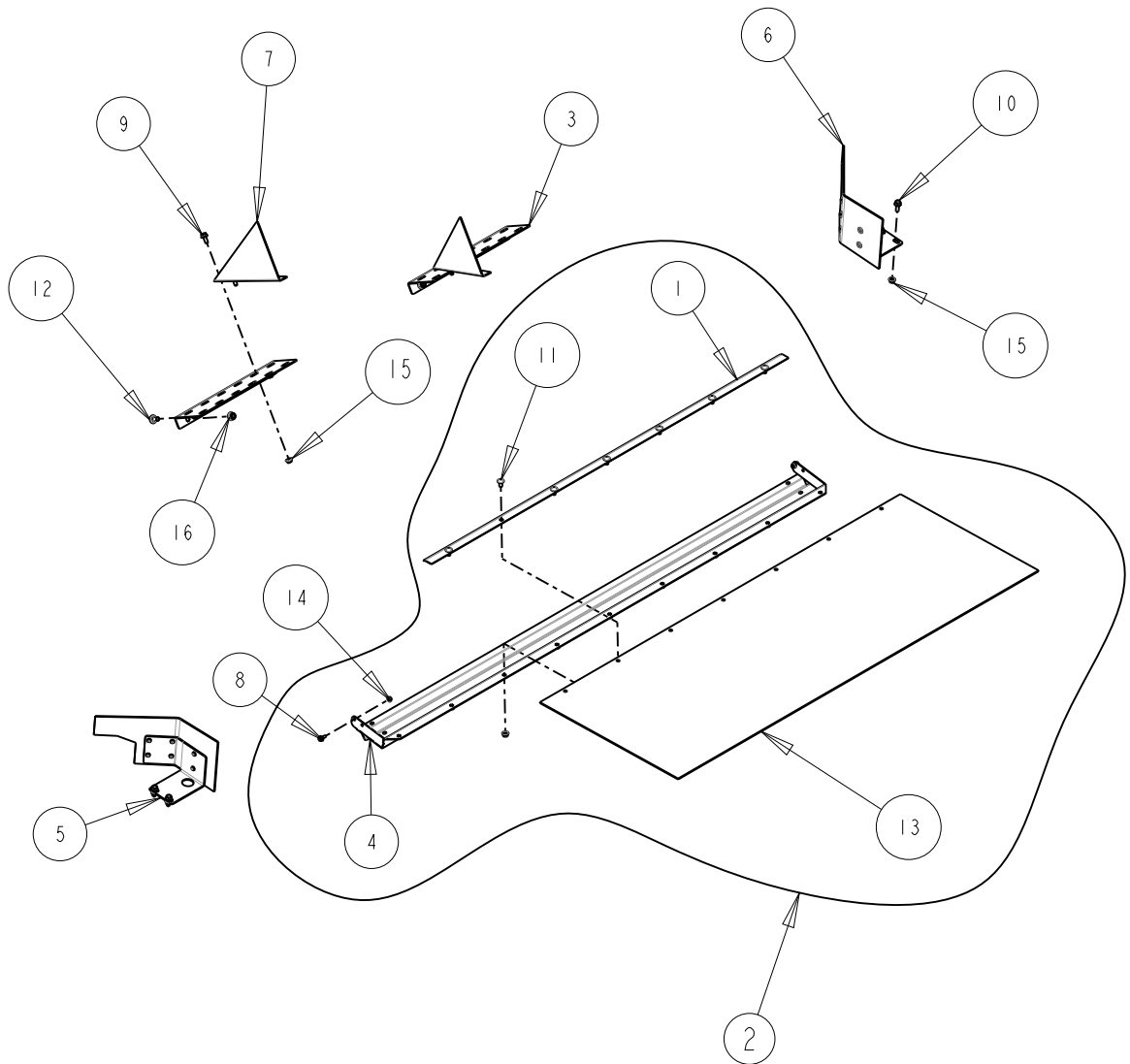
CaseIH 240 Series MAV Chopper  
Sieve Extension and Deflectors

Page:8-1

Serial No Range From:  
RM25761

Serial No Range To:  
PRESENT

Date:11/05/2021



L Indicate implement serial number with any parts order \_\_\_\_\_



CaseIH 240 Series MAV Chopper  
Sieve Extension and Deflectors

Page:8-2

Date:11/05/2021

Serial No Range From:

RM25761

Serial No Range To:

PRESENT

ITEM NO.	PART NO.	DESCRIPTION	QTY	NOTE
1	CH519B	STRAP AFX SIEVE EXT - BLK	1	
2	CS1037BA	ASSY SIEVE EXT AFX 230/240 - BLK	1	
3	CS170B	INTERNAL BAFFLE AFX 230/240S - BLK	2	
4	CS484B	SIEVE EXT AFX WIDE - BLK	1	
5	CS599BAL	DEFLECTOR AFX CHAFF LT - BLK	1	
6	CS599BAR	DEFLECTOR AFX CHAFF RT - BLK	1	
7	CS921B	FIN STR 13L - BLK	2	
8	B21M-0616	BOLT FLG M6X16 C8.8 YZD Iso8102	2	
9	B21M-0820	BOLT FLG M8X20 C8.8 YZD Iso8102	4	
10	B21M-0825	BOLT FLG M8X25 C8.8 YZD Iso8102	4	
11	B31M-0816	BOLT RH M8x16 C8.8 YZD ISO8678 Short Neck	7	
12	B31M-1020	BOLT RH M10X20 C8.8 YZD ISO8678 Short Neck	4	
13	CS1037-01	BELT AFX 30/40S WIDE SIEVE EXT	1	
14	N21M-06	NUT FLG M6 C8 YZD Iso4161	2	
15	N21M-08	NUT FLG M8 C8 YZD Iso4161	15	
16	N21M-10	NUT FLG M10 C8 YZD Iso4161	4	

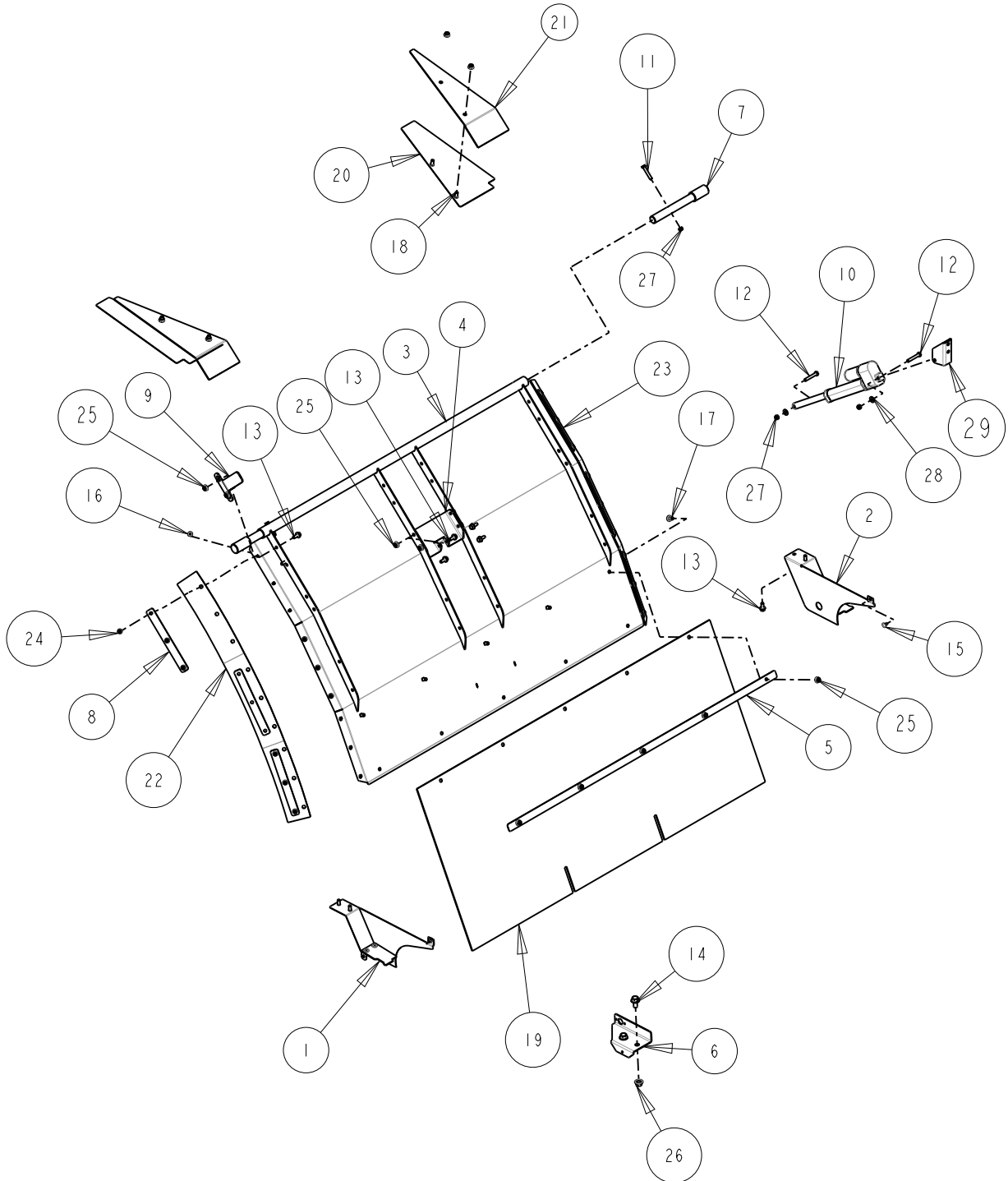
CaseIH 240 Series MAV Chopper  
Chopper Straw Door Components - EU Roller

Page:9-1

Serial No Range From:  
RM25761

Serial No Range To:  
PRESENT

Date:11/05/2021



L Indicate implement serial number with any parts order \_\_\_\_\_

CaseIH 240 Series MAV Chopper  
Chopper Straw Door Components - EU Roller

Page:9-2  
Date:11/05/2021

Serial No Range From:  
RM25761

Serial No Range To:  
PRESENT

ITEM NO.	PART NO.	DESCRIPTION	QTY	NOTE
1	CSIO54BAL	DEFLECTOR CHAFF LT - BLACK	1	
2	CSIO54BAR	DEFLECTOR CHAFF RT - BLACK	1	
3	CSIO62B	STRAW DOOR AFX - BLACK	1	
4	CS603B	BRKT ACTR MT - BLACK	1	
5	CS844B	STRAP AFX STRAW DOOR - BLACK	1	
6	CS857B	PLATE LADDER SENSOR MNT - BLK	1	
7	CS937Z	PIN AFX STRAW DOOR - YZD	2	
8	CS942B	STRAP AFX STRAW DOOR SIDE - BLK	6	
9	CS943B	TRGT STRW DOOR PROX - BLACK	1	
10	RPIO58	ACTUATOR	1	
11	BIIM-0845	BOLT HEX M8X45 C8.8 YZD Iso4014	2	
12	BIIM-0850	BOLT HEX M8X50 C8.8 YZD Iso4014	2	
13	B2IM-0820	BOLT FLG M8X20 C8.8 YZD Iso8102	10	
14	B2IM-1225	BOLT FLG M12X25 C8.8 YZD Iso8102	2	
15	B3IM-0612	BOLT RH M6X12 C8.8 YZD ISO8678 Short Neck	2	
16	B3IM-0616	BOLT RH M6X16 C8.8 YZD ISO8678 Short Neck	18	
17	B3IM-0816	BOLT RH M8x16 C8.8 YZD ISO8678 Short Neck	5	
18	B3IM-0820	BOLT RH M8x20 C8.8 YZD ISO8678 Short Neck	4	
19	CSIO51-01	BELTING AFX STRAW DOOR	1	
20	CS468-01	FILLER PLATE COMBINE ROOF	2	
21	CS669-01	SEAL ROOF AFX	2	
22	CS938-01L	BELT AFX DOOR SEAL	1	
23	CS938-01R	BELT AFX DOOR SEAL	1	
24	N2IM-06	NUT FLG M6 C8 YZD Iso4161	18	
25	N2IM-08	NUT FLG M8 C8 YZD Iso4161	15	
26	N2IM-12	NUT FLG M12 C8 YZD Iso4161	2	
27	N42M-08	NUT LOCK STL M8 C10 YZD DIN980V	4	
28	WIIM-08	WASHER FLAT M8 x 18.8 x 2.3 YZD	2	
29	CSIO12Z	CLEVIS STRAW DOOR ACTR - YZD	1	

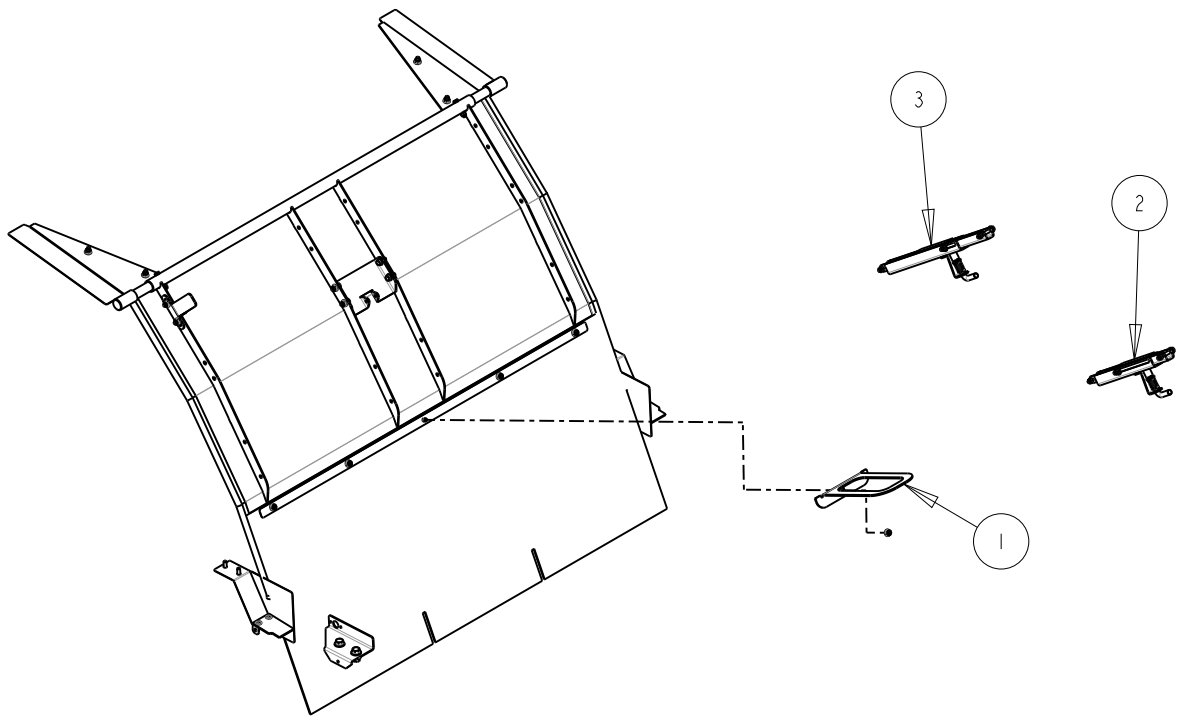
CaseIH 240 Series MAV Chopper  
Chopper Straw Door Components - Non EU Roller

Page:9-3

Serial No Range From:  
RM25761

Serial No Range To:  
PRESENT

Date:11/05/2021



FOR MACHINES WITH NO STRAW DOOR ACTUATOR

CaseIH 240 Series MAV Chopper  
Chopper Straw Door Components - Non EU Roller

Page:9-4

Serial No Range From:

Serial No Range To:

Date:11/05/2021

RM25761

PRESENT

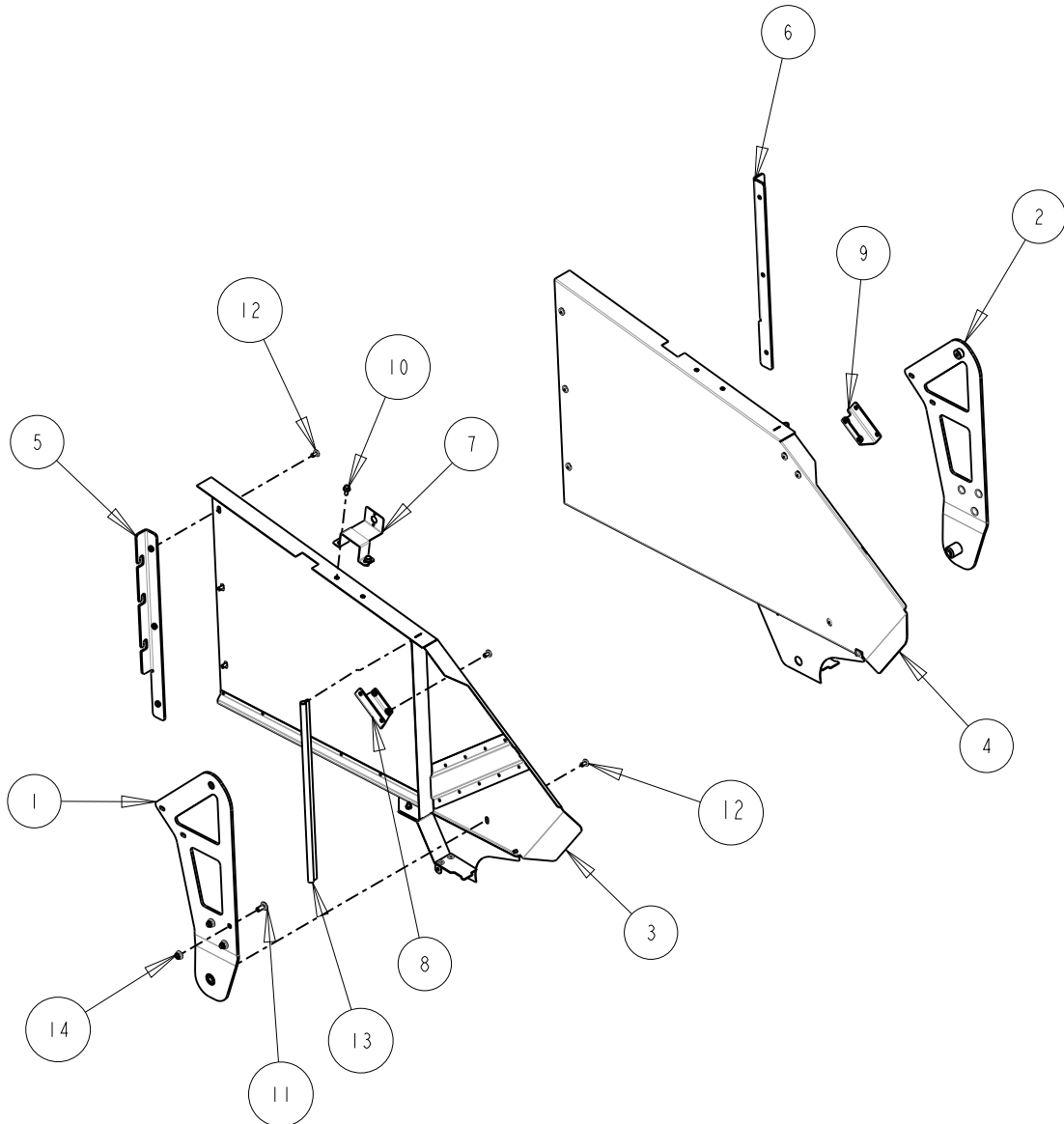
ITEM NO.	PART NO.	DESCRIPTION	QTY	NOTE
1	CS1070B	HANDLE AFX NA STRAW DOOR-BLACK	1	
2	CS861BA	LINKAGE AFX STRAW DOOR ASSY-BLACK	1	
3	CS910BA	LINKAGE AFX STRAW DOOR ASSY NA STD-BLACK	1	

CaseIH 240 Series MAV Chopper  
Chopper Ladder Mount Components

Page:10-1  
Date:11/05/2021

Serial No Range From:  
RM25761

Serial No Range To:  
PRESENT



L Indicate implement serial number with any parts order \_\_\_\_\_

CaseIH 240 Series MAV Chopper  
Chopper Ladder Mount Components

Page:10-2

Serial No Range From:

Serial No Range To:

Date:11/05/2021

RM25761

PRESENT

ITEM NO.	PART NO.	DESCRIPTION	QTY	NOTE
1	CS1008BL	MOUNT LDR LT - BLACK	1	
2	CS1008BR	MOUNT LDR RT - BLACK	1	
3	CS1041BAL	SKIN ASSY AFX LADDER LT - BLACK	1	
4	CS1041BAR	SKIN ASSY AFX LADDER RT - BLACK	1	
5	CS811BL	BRKT LT FRT MT - BLK	1	
6	CS811BR	BRKT RT FRT MT - BLK	1	
7	CS851B	BRACKET DOOR PROX SENSOR - BLK	1	
8	CS944BL	BRACKET TOP SKIN MT LT - BLK	1	
9	CS944BR	BRACKET TOP SKIN MT RT - BLK	1	
10	B21M-0820	BOLT FLG M8X20 C8.8 YZD Iso8102	6	
11	B31M-1025	BOLT RH M10X25 C8.8 YZD ISO8678 Short Neck	6	
12	B38M-0816	BOLT RH ALLEN M8x16 C8.8 YZD DIN11252 No Neck12		
13	CS1059-01	SEAL BULB AFX LADDER SKIN	2	
14	N21M-10	NUT FLG M10 C8 YZD Iso4161	6	

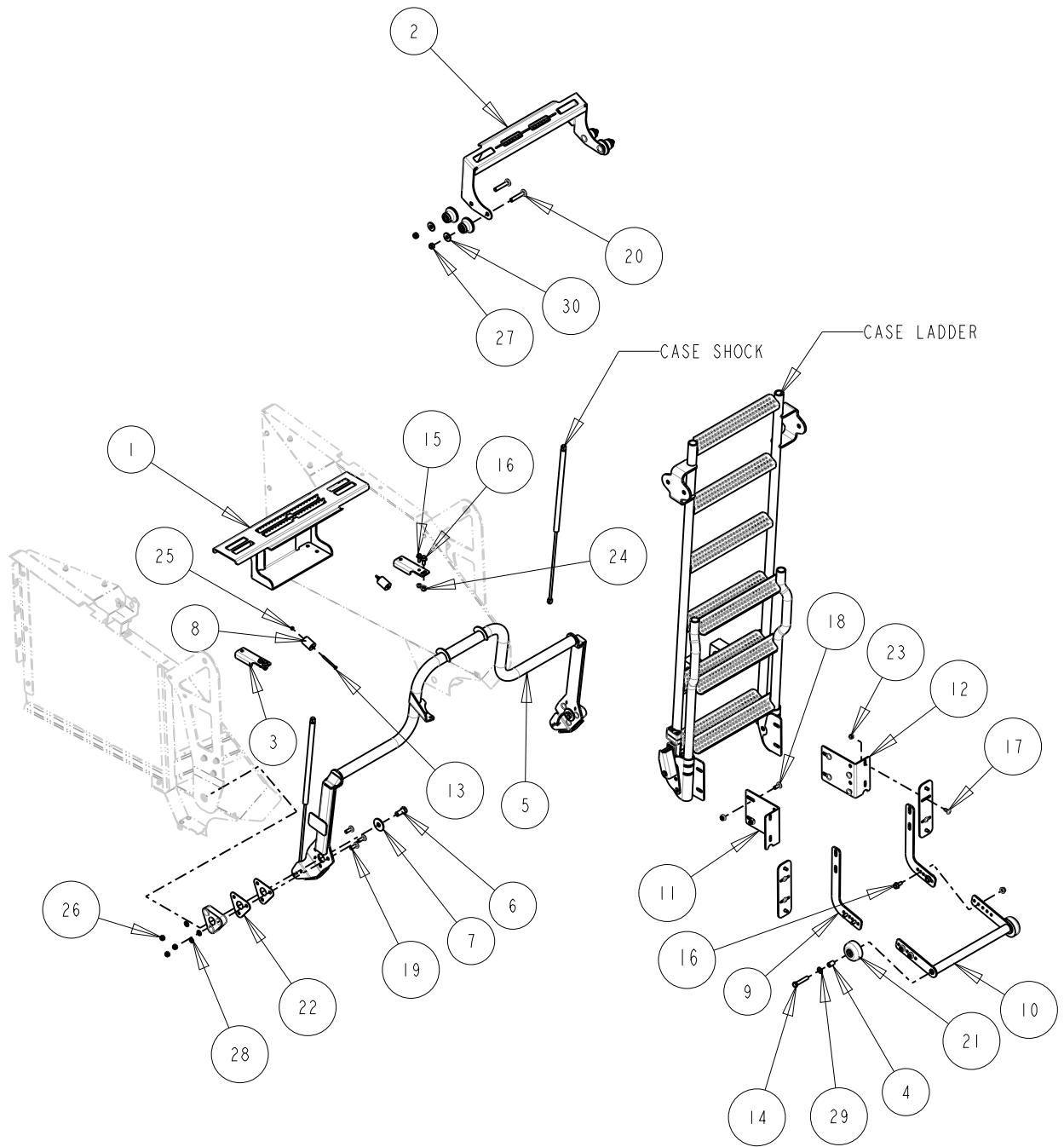
# CaseIH 240 Series MAV Chopper Chopper Ladder Kit Components

Page:II-I

Serial No Range From:  
RM25761

Serial No Range To:  
PRESENT

Date:11/05/2021





CaseIH 240 Series MAV Chopper  
Chopper Ladder Kit Components

Page:II-2

Serial No Range From:

Serial No Range To:

Date:II/05/202I

RM2576I

PRESENT

ITEM NO.	PART NO.	DESCRIPTION	QTY	NOTE
1	CSIO26B	STEP TOP LADDER AFX - BLACK	1	
2	CSIO28B	BRACKET LDR STEP EXT - BLACK	1	
3	CS836B	RELOCATE BRKT, LADDER RAIL - BLACK	2	
4	CS856Z	SPACER ROLLER - YZD	2	
5	CS927B	ARM LDR SUPPORT - BLACK	1	
6	CS934Z	BOLT LADDER FRAME - YZD	2	
7	CS935Z	WASHER, LDR FRAME - YZD	2	
8	CS948Z	SPACER, LDR BUMPER - YZD	2	
9	CS949B	PLATE, LDR HANDLE - BLACK	2	
10	CS950B	HANDLE, LADDER - BLACK	1	
11	CS95IBL	BRACKET LDR HANDLE MT LT - BLK	1	
12	CS95IBR	BRACKET LDR HANDLE MT RT - BLK	1	
13	B1IM-0670	BOLT HEX M6X70 C8.8 YZD Iso40I4	2	
14	B12M-1265	BOLT HEX M12X65 C10.9 YZD Iso40I4	2	
15	B2IM-0825	BOLT FLG M8X25 C8.8 YZD Iso8I02	2	
16	B2IM-1025	BOLT FLG M10X25 C8.8 YZD Iso8I02	6	
17	B3IM-0820	BOLT RH M8x20 C8.8 YZD ISO8678 Short Neck	8	
18	B3IM-1025	BOLT RH M10X25 C8.8 YZD ISO8678 Short Neck	14	
19	B3IM-1030	BOLT RH M10X30 C8.8 YZD ISO8678 Short Neck	6	
20	B3IM-1270	BOLT RH M12X70 C8.8 YZD ISO8678 Short Neck	4	
21	CS855-0I	ROLLER RUBBER LADDER	2	
22	CS976-0I	LADDER SHIM PLATE	4	
23	N2IM-08	NUT FLG M8 C8 YZD Iso4I6I	12	
24	N2IM-10	NUT FLG M10 C8 YZD Iso4I6I	20	
25	N42M-06	NUT LOCK STL M6 C10 YZD DIN980V	2	
26	N42M-10	NUT LOCK STL M10 C10 YZD DIN980V	6	
27	N42M-12	NUT LOCK STL M12 C10 YZD DIN980V	4	
28	WIIM-10	WASHER FLAT M10 x 20 x 2.3 YZD	6	
29	WIIM-12	WASHER FLAT M12 x 23.5 x 2.4 YZD	2	
30	WI2M-12	WASHER FLAT M12 x 34 x 3.5 YZD	4	

Indicate implement serial number with any parts order \_\_\_\_\_

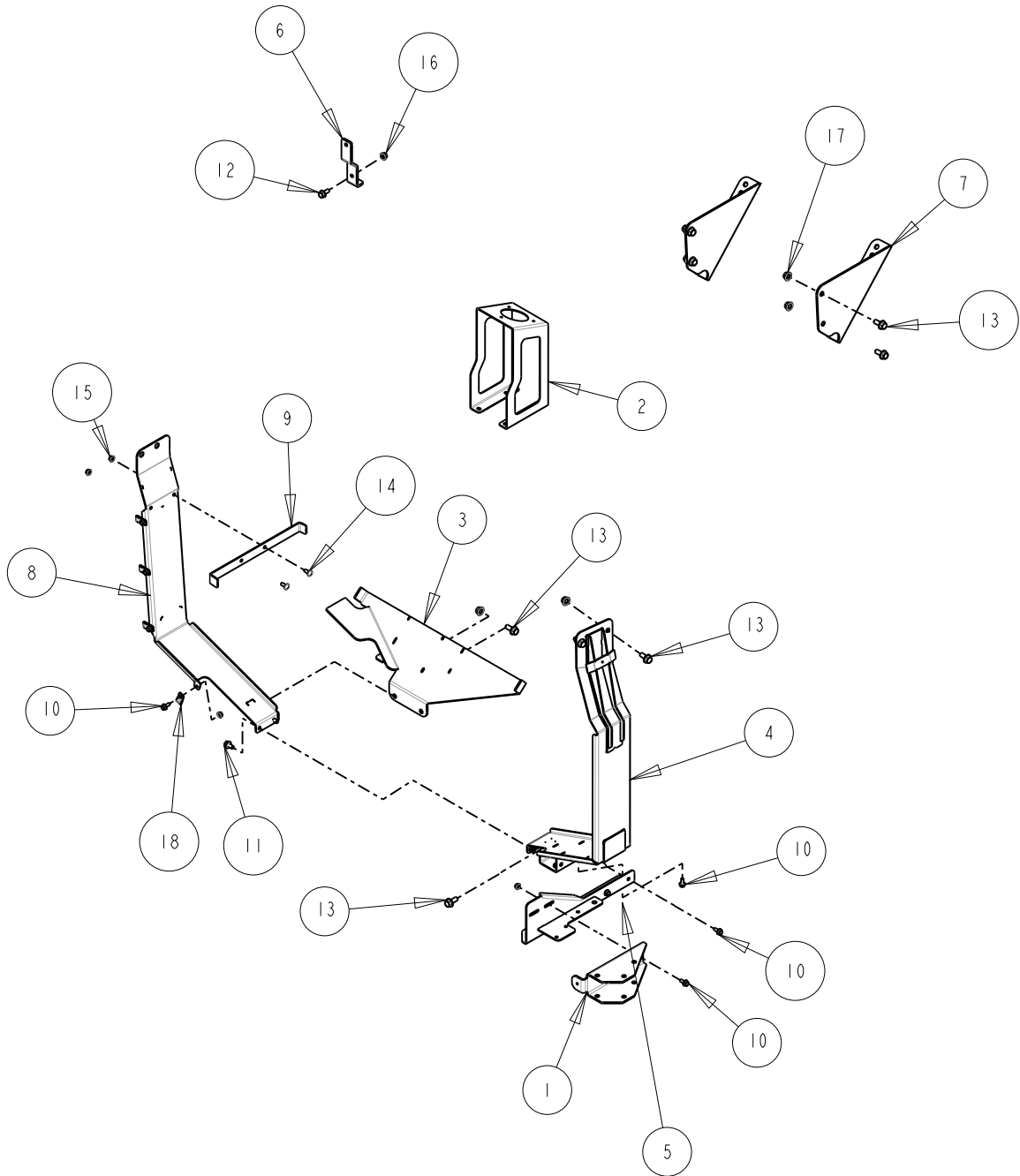
CaseIH 240 Series MAV Chopper  
Chopper DEF Tank Components

Page:12-1

Serial No Range From:  
RM25761

Serial No Range To:  
PRESENT

Date:11/05/2021



L Indicate implement serial number with any parts order \_\_\_\_\_

CaseIH 240 Series MAV Chopper  
Chopper DEF Tank Components

Page:12-2

Serial No Range From:

Serial No Range To:

Date:11/05/2021

RM25761

PRESENT

ITEM NO.	PART NO.	DESCRIPTION	QTY	NOTE
1	CS786B	BRACKET SHROUD LATCH - BLK	1	
2	CS805B	BRACKET DEF FILL TUBE MAV - BLK	1	
3	CS826B	BTM DEF MOUNT - BLK	1	
4	CS829B	BRACKET REAR DEF HANGER - BLK	1	
5	CS831B	ARM PANEL LATCH - BLK	1	
6	CS835B	BRACKET DEF VENT MT - BLK	1	
7	CS862B	BRACKET 3OS AFX AIR TNK MT - BLK	2	
8	CS890B	HANGER BRKT FRT DEF - BLK	1	
9	CS891B	BRKT TOP DEF GUIDE - BLK	1	
10	B21M-0820	BOLT FLG M8X20 C8.8 YZD Iso8102	10	
11	B21M-1020	BOLT FLG M10X20 C8.8 YZD Iso8102	2	
12	B21M-1025	BOLT FLG M10X25 C8.8 YZD Iso8102	1	
13	B21M-1230	BOLT FLG M12X30 C8.8 YZD Iso8102	10	
14	B31M-0820	BOLT RH M8x20 C8.8 YZD ISO8678 Short Neck	2	
15	N21M-08	NUT FLG M8 C8 YZD Iso4161	8	
16	N21M-10	NUT FLG M10 C8 YZD Iso4161	1	
17	N21M-12	NUT FLG M12 C8 YZD Iso4161	10	
18	RP220	P-CLIP 2W .375 .75H INSULATED	4	
	RP925	HARNESS ELECTRIC 3W X 7FT AMP -24OS	1	DEF HARNESS EXT. FIELD INSTALL

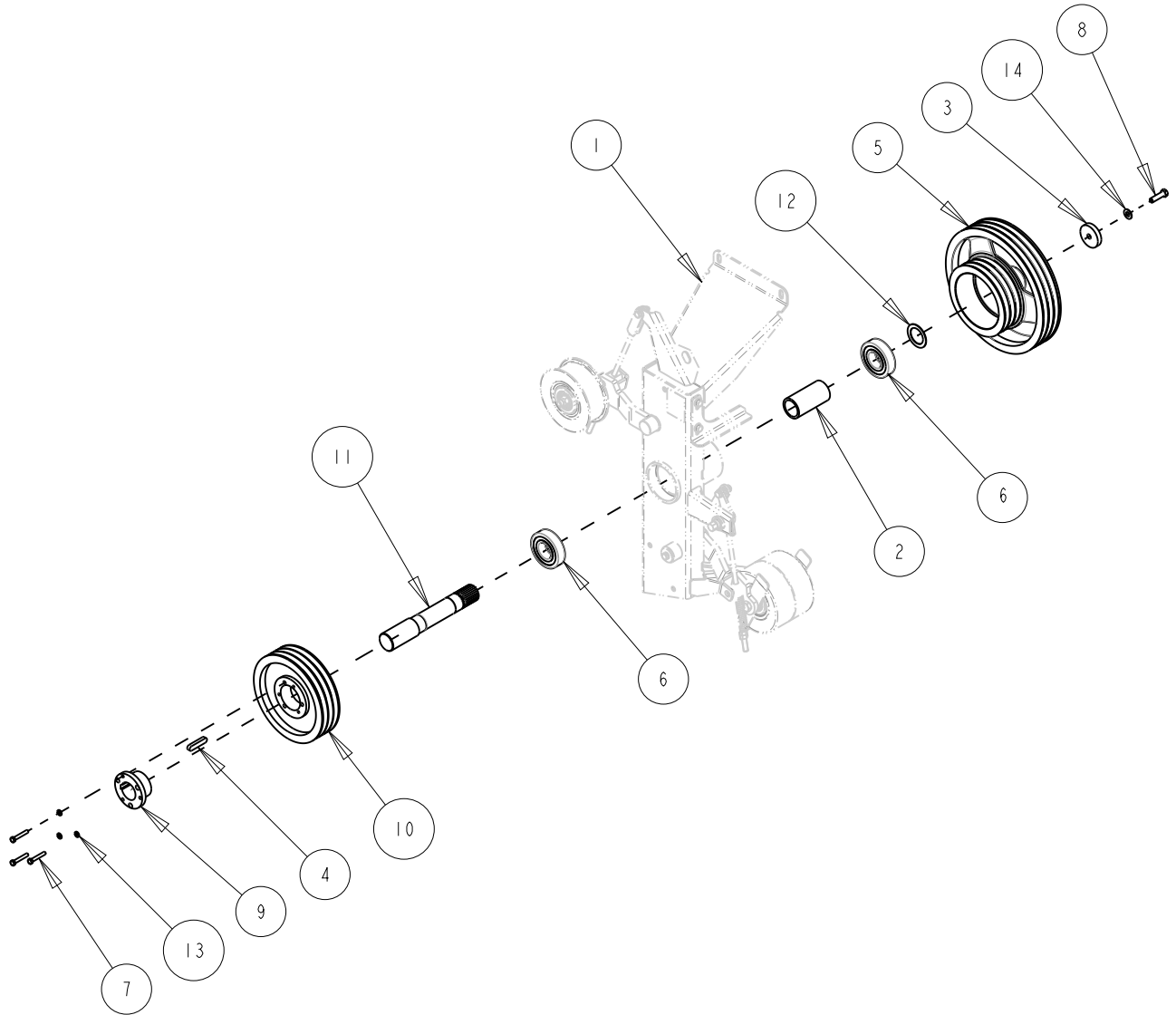
aseIH 240 Series MAV Chopper  
Jackshaft Drive Components

Page:13-1

Serial No Range From:  
JS277

Serial No Range To:  
PRESENT

Date:11/05/2021



L Indicate implement serial number with any parts order \_\_\_\_\_

aseIH 240 Series MAV Chopper  
Jackshaft Drive Components

Page:13-2

Serial No Range From:

Serial No Range To:

Date:11/05/2021

JS277

PRESENT

ITEM NO.	PART NO.	DESCRIPTION	QTY	NOTE
1	CS771BA	JACKSHAFT ASSY AFX BLK	1	
2	CS776Z	SLEEVE CASE JSHAFT - YZD	1	
3	CS777Z	WASHER .5 X 2.5 X .188 YZD	1	
4	323624	KEY OVAL 14mm x 9mm x 63mm L Class 5 Plain	1	
5	84188127	PULLEY 3B x 2 DRIVER JACKSHAFT	1	
6	87624213	BEARING, 45mm ID	2	
7	BIIM-0850	BOLT HEX M8X50 C8.8 YZD Iso4014	3	
8	BIIM-1245	BOLT HEX M12X45 C8.8 YZD Iso4014	1	
9	RP291	BUSHING TAPER SK 50mm ID	1	
10	RP387	SHEAVE 3B 9.4PD SK	1	
11	RP920	SHAFT JACKSHAFT AFX	1	
12	RP955	WASHER FLAT	1	
13	W2IM-08	WASHER HELICAL LOCK M8	3	
14	W3IM-12	WASHER, BELLEVILLE	1	

CaseIH 240 Series MAV Chopper  
Jackshaft Input Tension Arm Components

Page:14-1

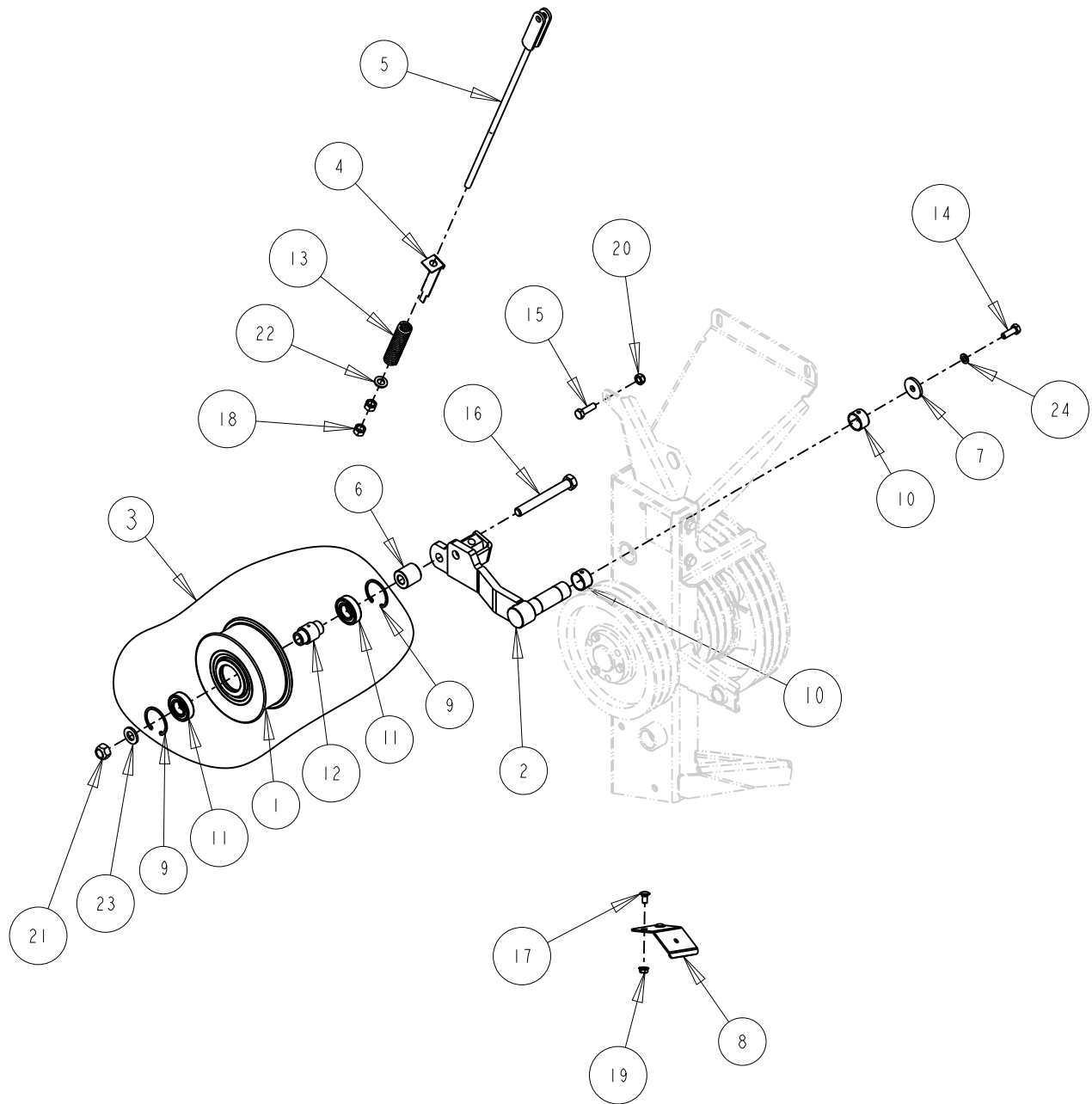
Serial No Range From:

Serial No Range To:

Date:11/05/2021

JS277

PRESENT



L Indicate implement serial number with any parts order \_\_\_\_\_

CaseIH 240 Series MAV Chopper  
 Jackshaft Input Tension Arm Components

Page:14-2

Serial No Range From:

Serial No Range To:

Date:11/05/2021

JS277

PRESENT

ITEM NO.	PART NO.	DESCRIPTION	QTY	NOTE
1	8407244I	IDLER PULLEY	1	NSS - 8458248I
2	84217450	TENSION IDLE ARM - BLK	1	
3	8458248I	UPPER IDLER ASSY	1	
4	CS1004Z	INDICATOR SPRING AFX UPPER IDLER - YZD	1	
5	CS1005Z	LINK TENSION 19L ROLLED THREAD YZD	1	
6	CS778Z	SPACER 0.656 ID X 1.375 OD X 1.375L YZD	1	
7	CS779Z	WASHER	1	
8	CS824Z	HOSE MNT BRKT - YZD	1	
9	370011	CIRCLIP M52 x 2	2	
10	420434	BUSHING DX 30ID x 20L	2	
11	443898	BEARING BALL FLAT 25ID	2	
12	84287963	SPINDLE IDLER	1	
13	84449503	SPRING-C 4.5 WR 25.75 OD 170L ZN	1	
14	BIIM-1030	BOLT HEX M10X30 C8.8 YZD Iso4014	1	
15	BIIM-1035	BOLT HEX M10X35 C8.8 YZD Iso4014	1	
16	BIIM-16130	BOLT HEX M16X130 C8.8 YZD Iso4014	1	
17	B3IM-0816	BOLT RH M8x16 C8.8 YZD ISO8678 Short Neck	2	
18	NIIM-12	NUT HEX M12 C8 YZD ISO4032	2	
19	N2IM-08	NUT FLG M8 C8 YZD Iso4161	2	
20	N42M-10	NUT LOCK STL M10 C10 YZD DIN980V	1	
21	N42M-16	NUT LOCK STL M16 C10 YZD DIN980V	1	
22	WIIM-12	WASHER FLAT M12 x 23.5 x 2.4 YZD	1	
23	WIIM-16	WASHER FLAT M16 x 32 x 3.5 YZD	1	
24	W2IM-10	WASHER HELICAL LOCK M10	1	

CaseIH 240 Series Chopper  
Jackshaft Output Tension Arm Components

Page:15-1

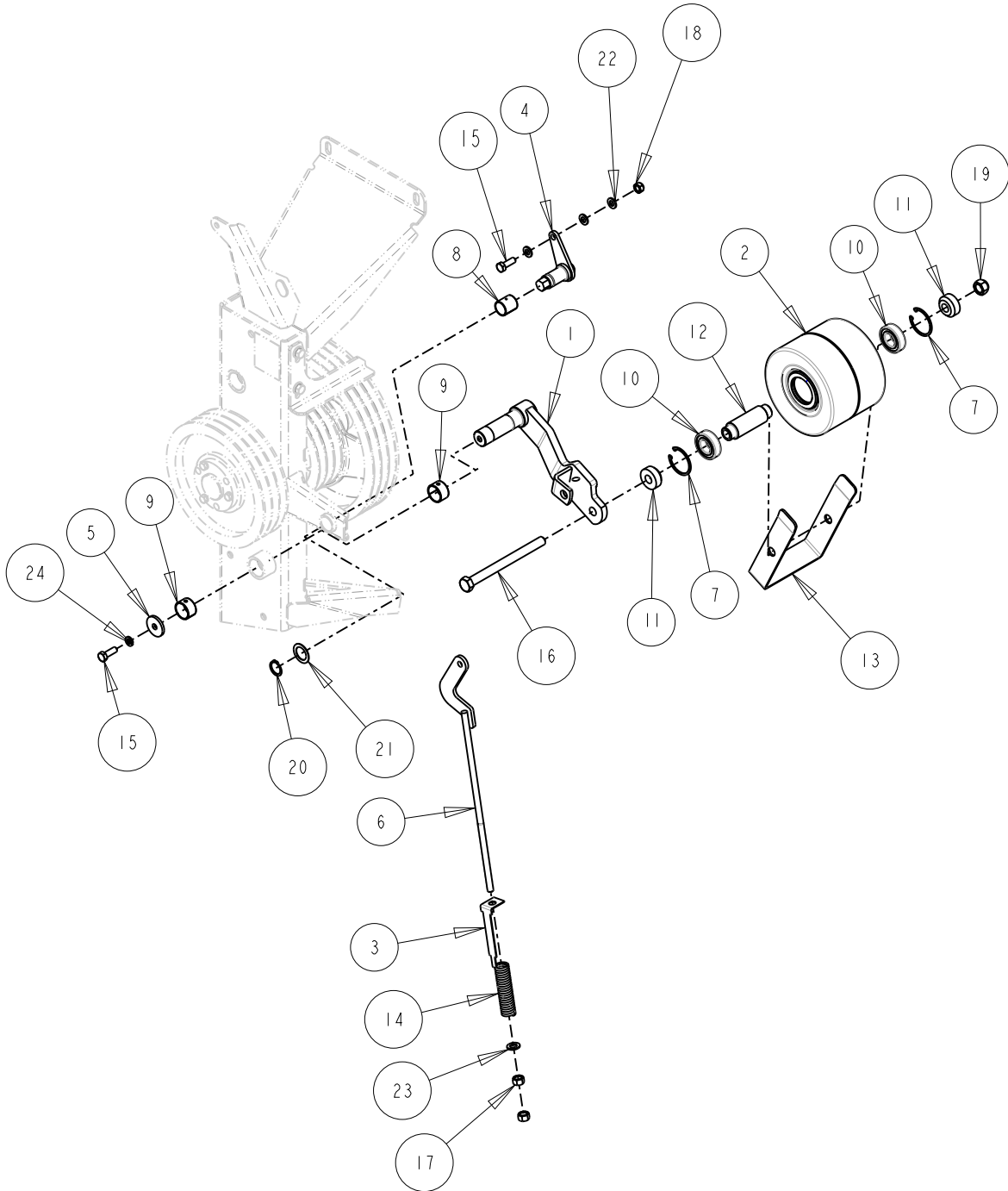
Serial No Range From:

Serial No Range To:

Date:11/05/2021

JS277

PRESENT



L Indicate implement serial number with any parts order \_\_\_\_\_



CaseIH 240 Series Chopper  
 Jackshaft Output Tension Arm Components

Page:15-2

Serial No Range From:

Serial No Range To:

Date:11/05/2021

JS277

PRESENT

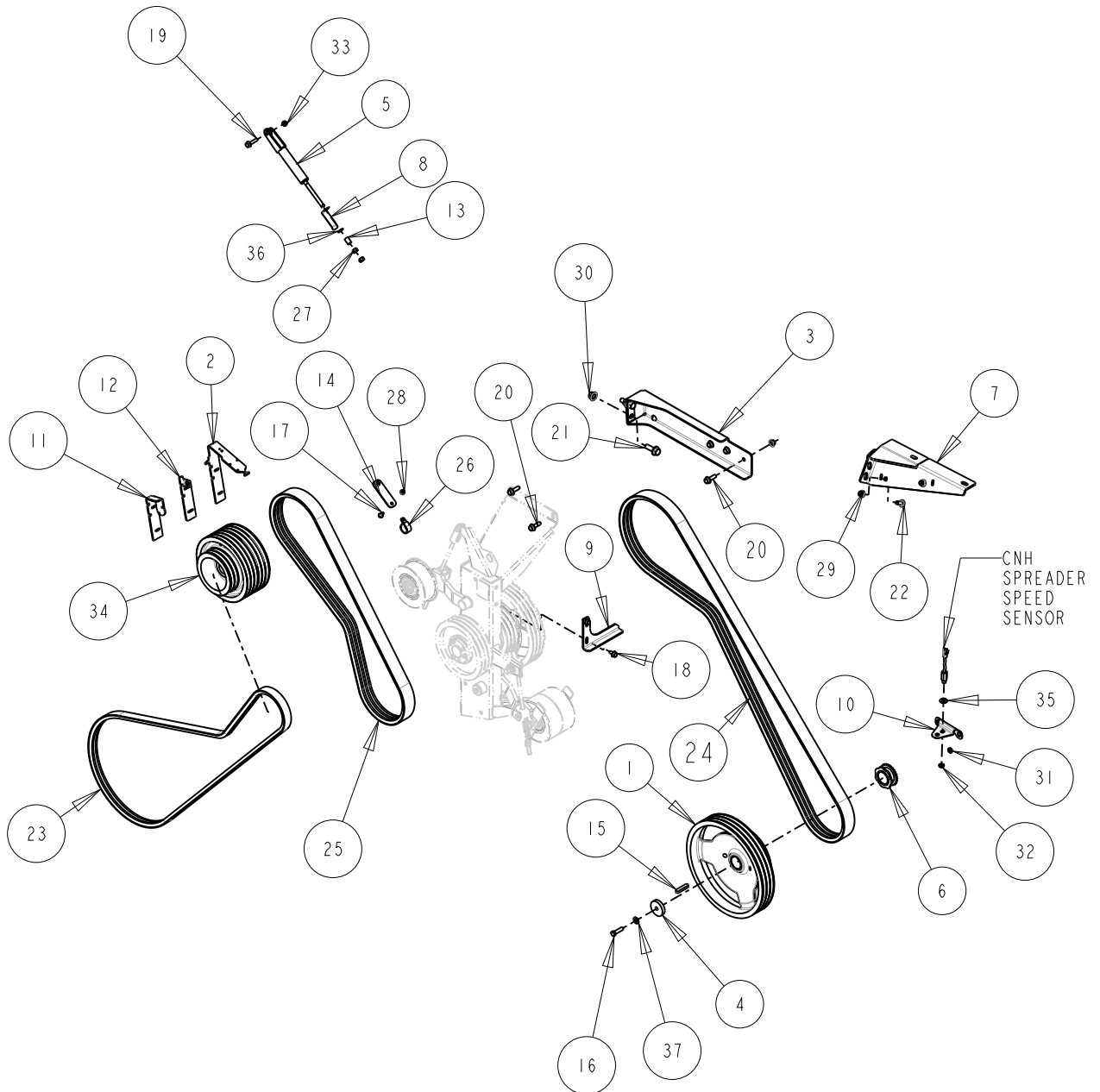
ITEM NO.	PART NO.	DESCRIPTION	QTY	NOTE
1	84217450	TENSION IDLE ARM - BLK	1	
2	84221105	IDLER FLAT	1	
3	CS1004Z	INDICATOR SPRING AFX UPPER IDLER - YZD	1	
4	CS1029Z	IDLER TENSION PIVOT PIN YZD	1	
5	CS779Z	WASHER	2	
6	CS981Z	TENSION ROD AFX 18.5L	1	
7	370011	CIRCLIP M52 x 2	2	
8	395589	BUSHING DX 25ID x 30L	1	
9	420434	BUSHING DX 30ID x 20L	2	
10	443898	BEARING BALL FLAT 25ID	2	
11	84007680	SPACER IDLER - YZD	2	
12	84221086	SLEEVE FLAT IDER - PLAIN	1	
13	84230557	GUIDE PLATE IDLER	1	
14	84449503	SPRING-C 4.5 WR 25.75 OD 170L ZN	1	
15	BIIM-1030	BOLT HEX M10X30 C8.8 YZD Iso4014	2	
16	BIIM-16190	BOLT HEX M16X190 C8.8 YZD Iso4014	1	
17	NIIM-12	NUT HEX M12 C8 YZD ISO4032	2	
18	N42M-10	NUT LOCK STL M10 C10 YZD DIN980V	1	
19	N42M-16	NUT LOCK STL M16 C10 YZD DIN980V	1	
20	Q2IM-25	RING SNAP EXT M25 YZD	1	
21	RPI16	M.B. 1.013 ID X 1.5 OD .045TK	1	
22	WIIM-10	WASHER FLAT M10 x 20 x 2.3 YZD	3	
23	WIIM-12	WASHER FLAT M12 x 23.5 x 2.4 YZD	1	
24	W2IM-10	WASHER HELICAL LOCK M10	1	

CaseIH 240 Series MAV Chopper  
Chopper Drive Components

Page:16-1  
Date:11/05/2021

Serial No Range From:  
RM25761

Serial No Range To:  
PRESENT



CaseIH 240 Series MAV Chopper  
Chopper Drive Components

Page:16-2

Date:11/05/2021

Serial No Range From:

RM25761

Serial No Range To:

PRESENT

ITEM NO.	PART NO.	DESCRIPTION	QTY	NOTE
1	84188124	PULLEY 3B x 2 CHOPPER - BLACK	1	
2	CS1064Z	INTERNAL KNIFE LOCK-OUT - YZD	1	
3	CS772B	PLATE UPR JS MOUNT AFX 230/240s - BLK	1	
4	CS777Z	WASHER .5 X 2.5 X .188 YZD	2	
5	CS784B	SPRING ASSY WELD INT CHOPPER HS - BLACK	1	
6	CS788Z	SPEED SENSOR TARGET YZD	1	
7	CS796B	GUSSET AFX COMBINE HOOD LT - BLK	1	
8	CS797Z	INDICATOR INTERNAL CHOPPER HS SPRING - YZD	1	
9	CS799B	BRACKET BELT GUIDE - BLACK	1	
10	CS833Z	MOUNT PLATE AFX SPEED SENSOR - YZD	1	
11	CS837Z	INTERNAL KNIFE LOCK-OUT - YZD	1	
12	CS838Z	BRACKET KBAR 230, 20, 10 SERIES - YZD	1	
13	CS856Z	SPACER ROLLER - YZD	1	
14	CS874B	STRAP AFX SUMP LINE - BLK	1	
15	323624	KEY OVAL 14mm x 9mm x 63mm L Class 5 Plain	2	
16	B11M-1245	BOLT HEX M12X45 C8.8 YZD Iso4014	2	
17	B21M-0820	BOLT FLG M8X20 C8.8 YZD Iso8102	2	
18	B21M-1020	BOLT FLG M10X20 C8.8 YZD Iso8102	2	
19	B21M-1045	BOLT FLG M10X45 C8.8 YZD Iso8102	1	
20	B21M-1240	BOLT FLG M12X40 C8.8 YZD Iso8102	5	
21	B21M-1650	BOLT FLG M16X50 C8.8 YZD Iso8102	2	
22	B31M-1230	BOLT RH M12X30 C8.8 YZD ISO8678 Short Neck	2	
23	BE2B117K	VBELT 2B 117L KEVLAR	1	
24	BE3B135K	VBELT 3B 135L KEVLAR	2	
25	BE3B88K	VBELT 3B 88L KEVLAR	1	
26	H99-20	TUBE STRAP 1.25 OD ZN RUBBER	1	
27	N11M-12	NUT HEX M12 C8 YZD ISO4032	6	
28	N21M-08	NUT FLG M8 C8 YZD Iso4161	4	
29	N21M-12	NUT FLG M12 C8 YZD Iso4161	7	
30	N21M-16	NUT FLG M16 C8 YZD Iso4161	2	
31	N31M-12	NUT JAM M12 C8 YZD Iso4035	2	
32	N38-08	NUT JAM .5-20 UNF GR5 ZN	1	
33	N42M-10	NUT LOCK STL M10 C10 YZD DIN980V	3	
34	RP918	SHEAVE PTO REDEKOP 3B DRIVE	1	
35	W11-09	WASHER FLAT .563 ID ZN	1	
36	W11M-12	WASHER FLAT M12 x 23.5 x 2.4 YZD	3	
37	W31M-12	WASHER, BELLEVILLE	2	

Indicate implement serial number with any parts order \_\_\_\_\_

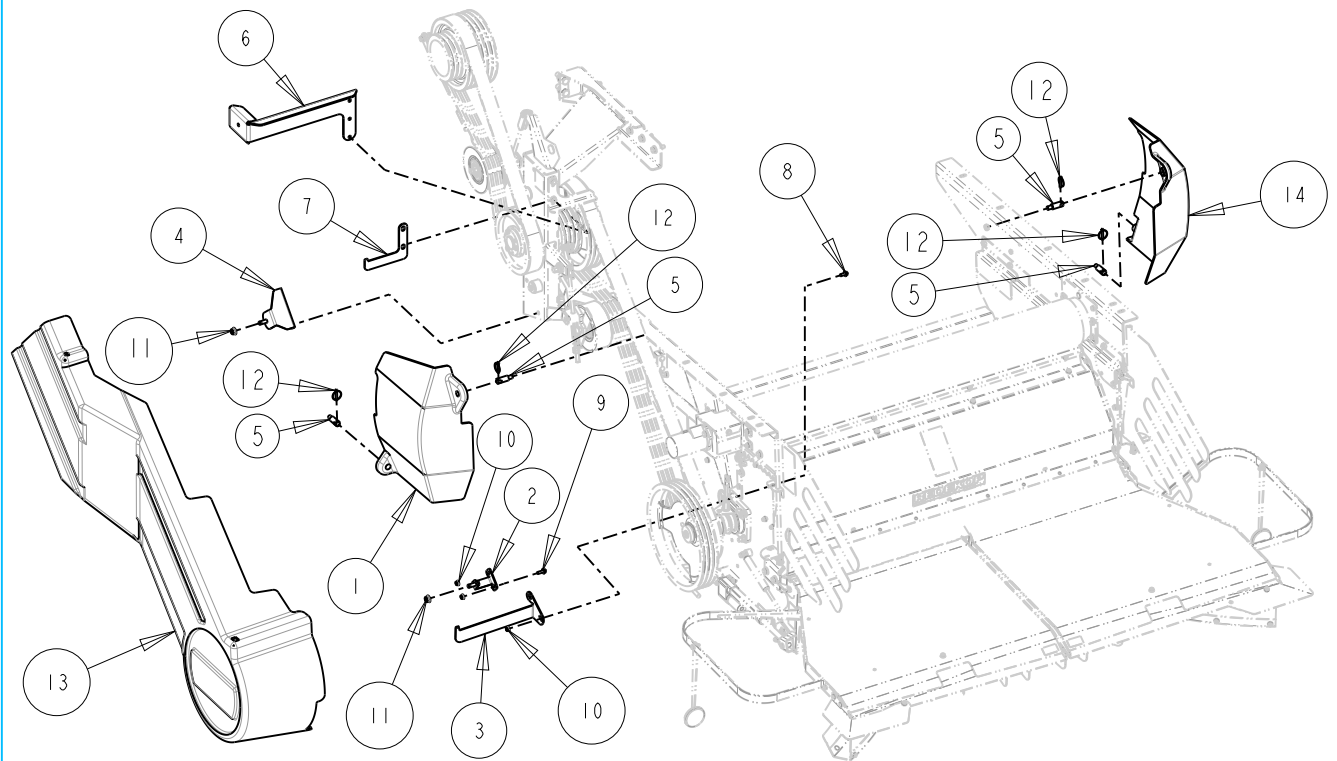
CASE IH 240 Series MAV Chopper  
Chopper Drive Shield Components

Page:17-1

Serial No Range From:  
RM25761

Serial No Range To:  
PRESENT

Date:11/05/2021



L Indicate implement serial number with any parts order \_\_\_\_\_

CASE IH 240 Series MAV Chopper  
Chopper Drive Shield Components

Page:17-2

Serial No Range From:

Serial No Range To:

Date:11/05/2021

RM25761

PRESENT

ITEM NO.	PART NO.	DESCRIPTION	QTY	NOTE
1	CS1061	VENT AFX LT MY20	1	
2	CS1017B	BRACKET SHIELD LATCH BTM REAR	1	
3	CS1024B	HANGER SHIELD LATCH TOP FRT	1	
4	CS1027B	SHEILD LATCH FRT BTM AFX - BLK	1	
5	CS1035Z	PIN VENT COMBINE MT AFX	4	
6	CS1046B	BRACKET HOSE SUPPORT	1	
7	CS1063B	HANGER UPPER SHIELD - BLACK	1	
8	B21M-0820	BOLT FLG M8X20 C8.8 YZD Iso8102	18	
9	B21M-0825	BOLT FLG M8X25 C8.8 YZD Iso8102	6	
10	N21M-08	NUT FLG M8 C8 YZD Iso4161	47	
11	N21M-12	NUT FLG M12 C8 YZD Iso4161	9	
12	RPI28	PIN LYNCH .25 x 1.5L w/LANYARD ZN	4	
13	RP997	SHIELD CASE AFX 2019	1	
14	RPI001	VENT AFX RIGHT	1	
	RPI105	PIN, LYNCH 3/16"X1.25"	3	FOR DRIVE SHIELD NA MODELS

CaseIH 240 Series MAV Chopper  
Chopper Actuated Tailboard Components

Page:18-1

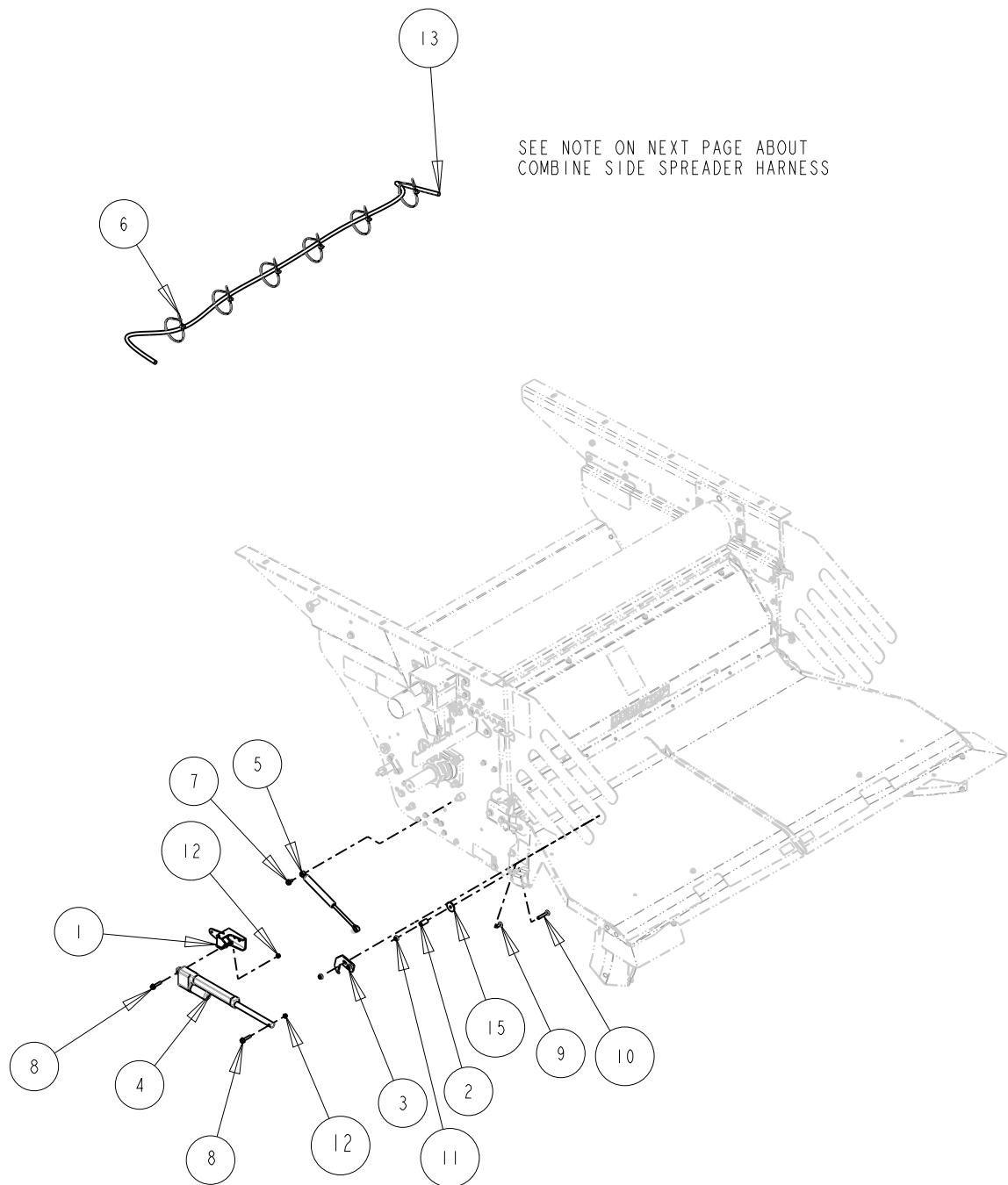
Serial No Range From:

Serial No Range To:

Date:11/05/2021

RM25761

PRESENT



Case IH 240 Series MAV Chopper  
Chopper Actuated Tailboard Components

Page: 18-2

Serial No Range From:

Serial No Range To:

Date: 11/05/2021

RM25761

PRESENT

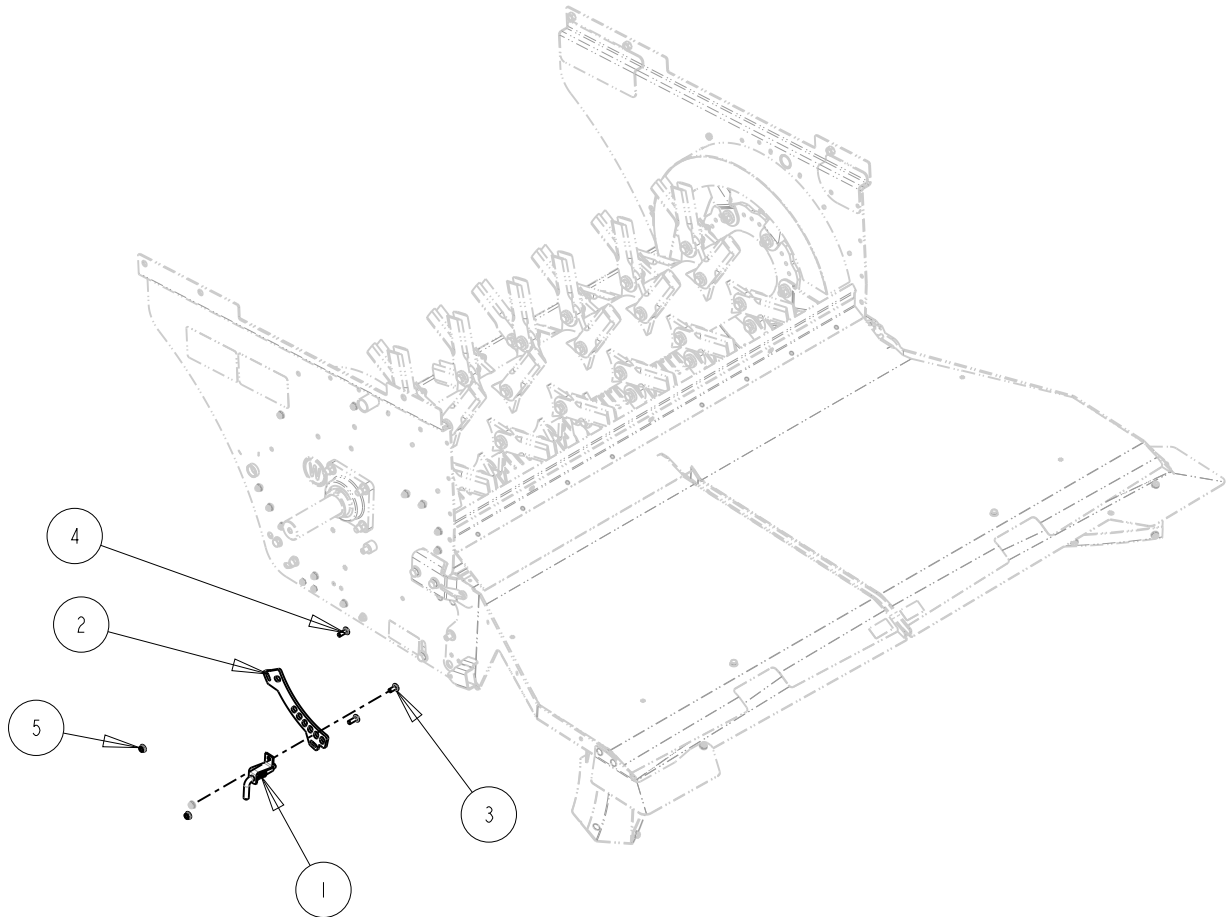
ITEM NO.	PART NO.	DESCRIPTION	QTY	NOTE
1	CS701Z	MOUNT, ACTUATOR BASE - YZD	2	
2	CS972Z	TUBE LIMIT ACTUATOR - YZD	2	
3	CS973Z	HOOD TBOARD STOP	1	
4	RPI058	ACTUATOR	2	
5	RP951A	SPRING GAS SHOCK	2	
6	87741307	CABLE TIE, FIR TREE	6	
7	B2IM-0816	BOLT FLG M8X16 C8.8 YZD Iso8102	15	
8	B2IM-0840	BOLT FLG M8X40 C8.8 YZD Iso8102	4	
9	B3IM-0820	BOLT RH M8x20 C8.8 YZD ISO8678 Short Neck	6	
10	B3IM-0850	BOLT RH M8x50 C8.8 YZD ISO8678 Short Neck	2	
11	N2IM-08	NUT FLG M8 C8 YZD Iso4161	43	
12	N42M-08	NUT LOCK STL M8 C10 YZD DIN980V	4	
13	RP977	HARNESS ELECTRIC 5W X 49 IN.	1	ACTUATOR TO ACTUATOR HARNESS
14	W3IM-12	WASHER, BELLEVILLE	8	
15	W4IM-08	WASHER FLAT M8 x 38 x 2.5 YZD	2	
	47590048	HARNESS ELECTRIC SPREADER ADJUST	1	CASE IH PART

CaseIH 240 Series MAV Chopper  
Chopper Manual Tailboard Components

Page:19-1  
Date:11/05/2021

Serial No Range From:  
RM25761

Serial No Range To:  
PRESENT



SAME BOTH SIDES



CaseIH 240 Series MAV Chopper  
Chopper Manual Tailboard Components

Page:19-2  
Date:11/05/2021

Serial No Range From:  
RM25761

Serial No Range To:  
PRESENT

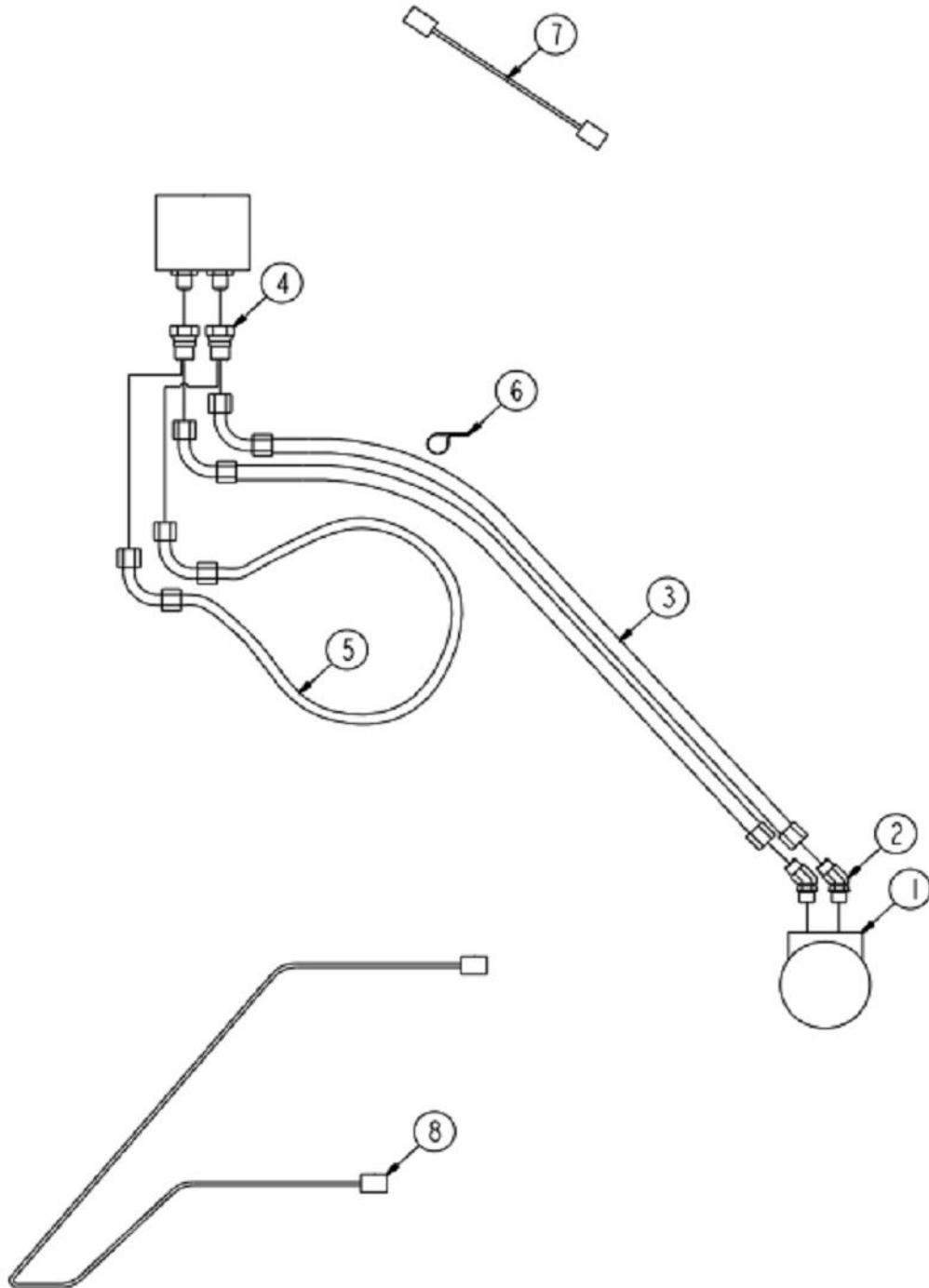
ITEM NO.	PART NO.	DESCRIPTION	QTY	NOTE
1	CG112BA	LATCH TBOARD ADJ - BLACK	2	
2	CG314B	LUG TBOARD ADJ 6 HOLE - BLACK	2	
3	B31M-0820	BOLT RH M8x20 C8.8 YZD ISO8678 Short Neck	2	
4	B31M-0825	BOLT RH M8x25 C8.8 YZD ISO8678 Short Neck	8	
5	N21M-08	NUT FLG M8 C8 YZD Iso4161	16	
6	W31M-12	WASHER, BELLEVILLE	8	

CaseIH 240 Series MAV Chopper  
Chopper Hydraulics and Harness Components

Page:20-1  
Date:11/05/2021

Serial No Range From:  
RM25761

Serial No Range To:  
PRESENT



CaseIH 240 Series MAV Chopper  
 Chopper Hydraulics and Harness Components

Page:20-2

Serial No Range From:

Serial No Range To:

Date:11/05/2021

RM25761

PRESENT

ITEM NO.	PART NO.	DESCRIPTION	QTY	NOTE
1	RP180	MOTOR HYDRAULIC EATON H5.9 2B 1.00" SHAFT 1	1	WINDROW HYDRAULIC MOTOR
2	H30-1010MF	FITTING HYDRAULIC 45DEG 10 MORG -10 MORFS 2	2	
3	HH115	HOSE HYDRAULIC .625 X 61L 100R2SN. 10	2	WINDROW ROLLER HYDRAULIC HOSE
4	H28-1012FF	FITTING HYDRAULIC STR 10 MORFS X 12 FORFS 2	2	
5	HH110	HOSE HYDRAULIC 0.75 X 26L 100R2SN	1	NON WINDROW HYDRAULIC HOSE
6	H99-18	TUBE STRAP 1.125 OD ZN RUBBER	5	
7	RP953	HARNESS ELECTRIC 2W X 32L DEUTSCH CON	1	STRAW DOOR HARNESS EXTENSION
8	RP892	HARNESS ELECTRIC 5W X 5FT METRIPACK AFX	1	ACTUATOR TO ACTUATOR HARNESS