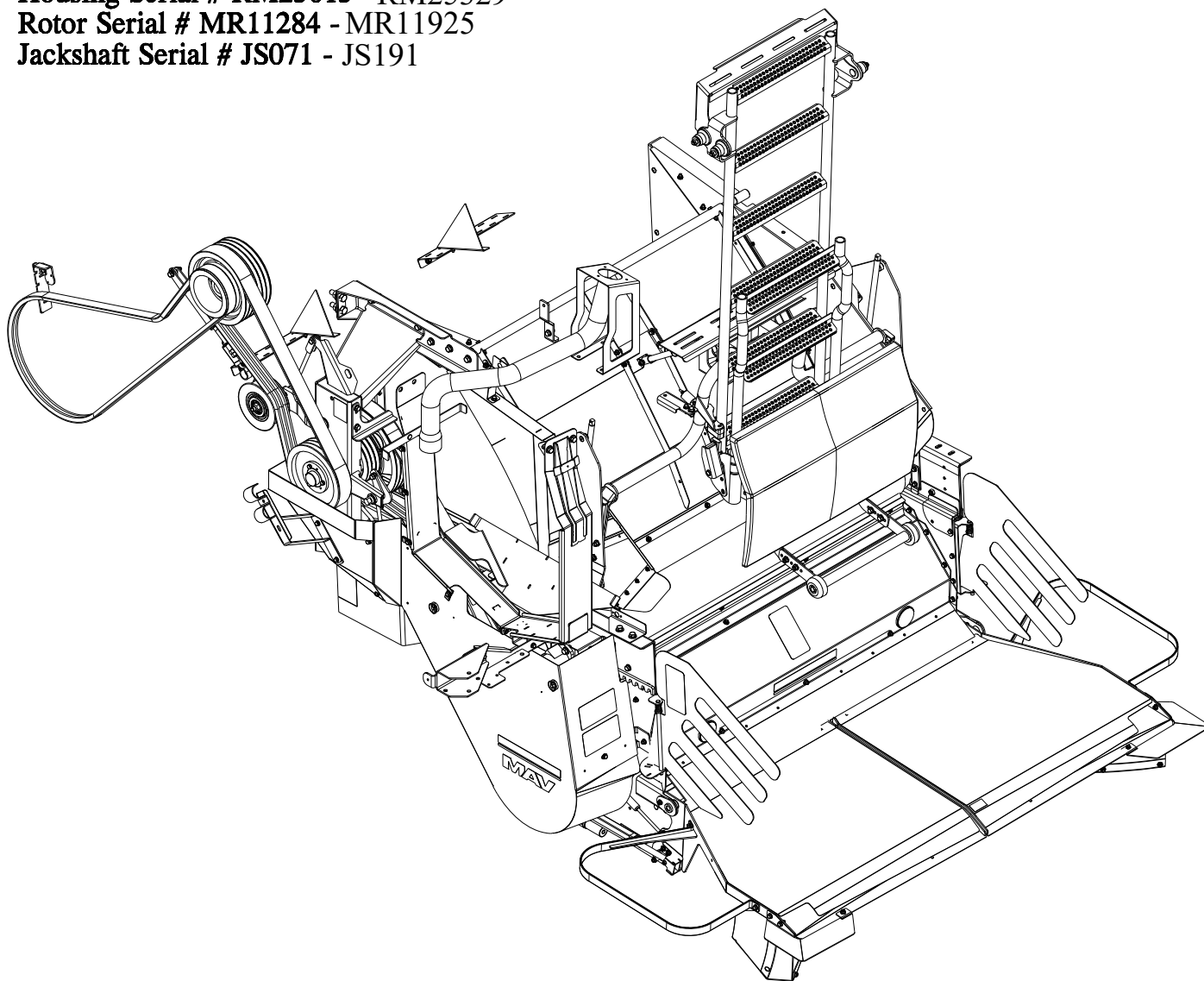


REDEKOP™

Crop Residue Management

CaseIH 7230-9230, 7240-9240
MAV - 220-212 Model Year 2017
Parts Manual

Housing Serial # RM25015 - RM25329
Rotor Serial # MR11284 - MR11925
Jackshaft Serial # JS071 - JS191

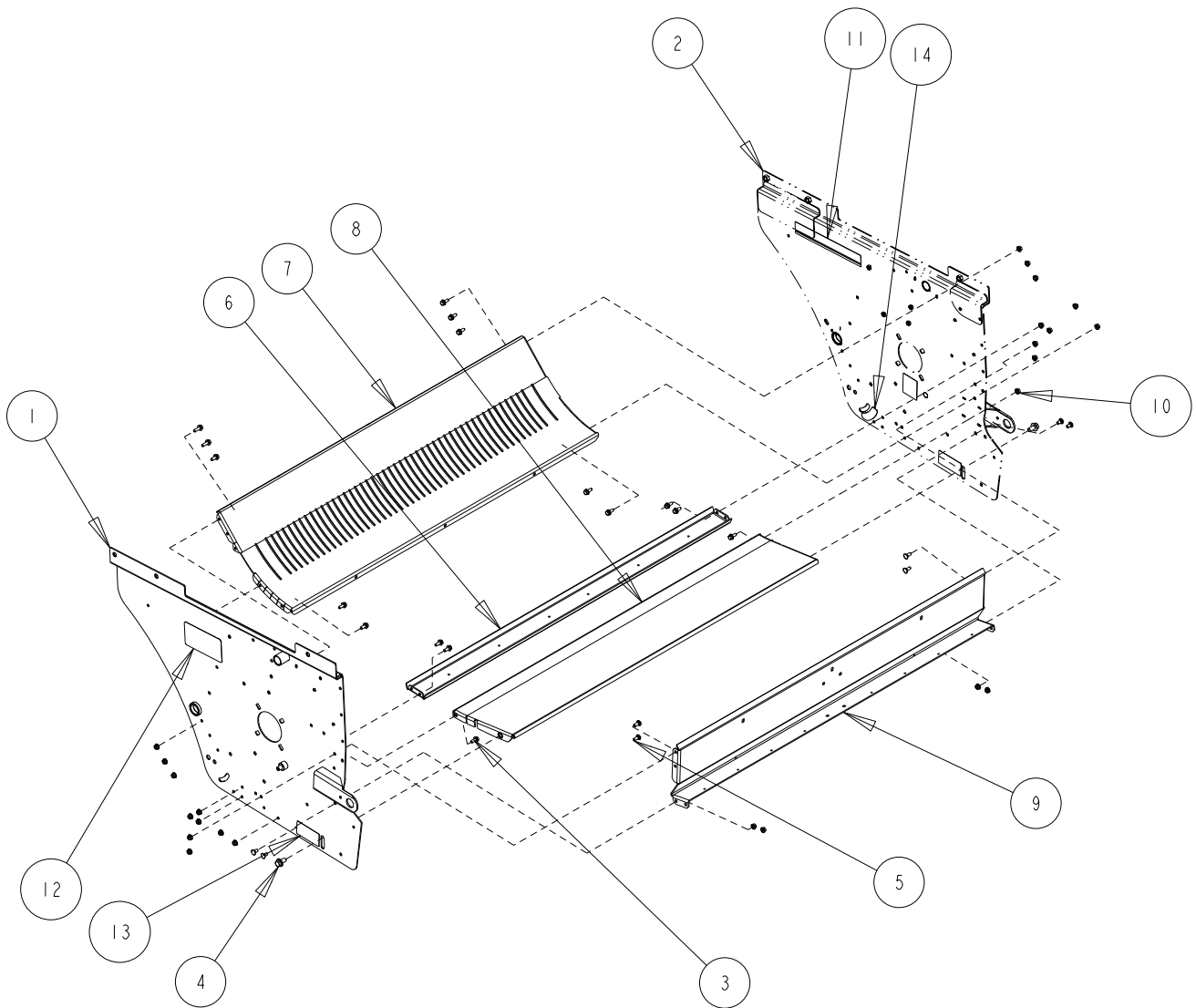


CaseIH 240 Series MAV Chopper
Chopper Base Mounts

Date:24JAN2017

Serial No Range From:
RM25015

Serial No Range To:
RM25329



CSOI45-02-2

Indicate implement serial number with any parts order _____

CaseIH 240 Series MAV Chopper
Chopper Base Mounts

Date:24JAN2017

Serial No Range From:
RM25015

Serial No Range To:
RM25329

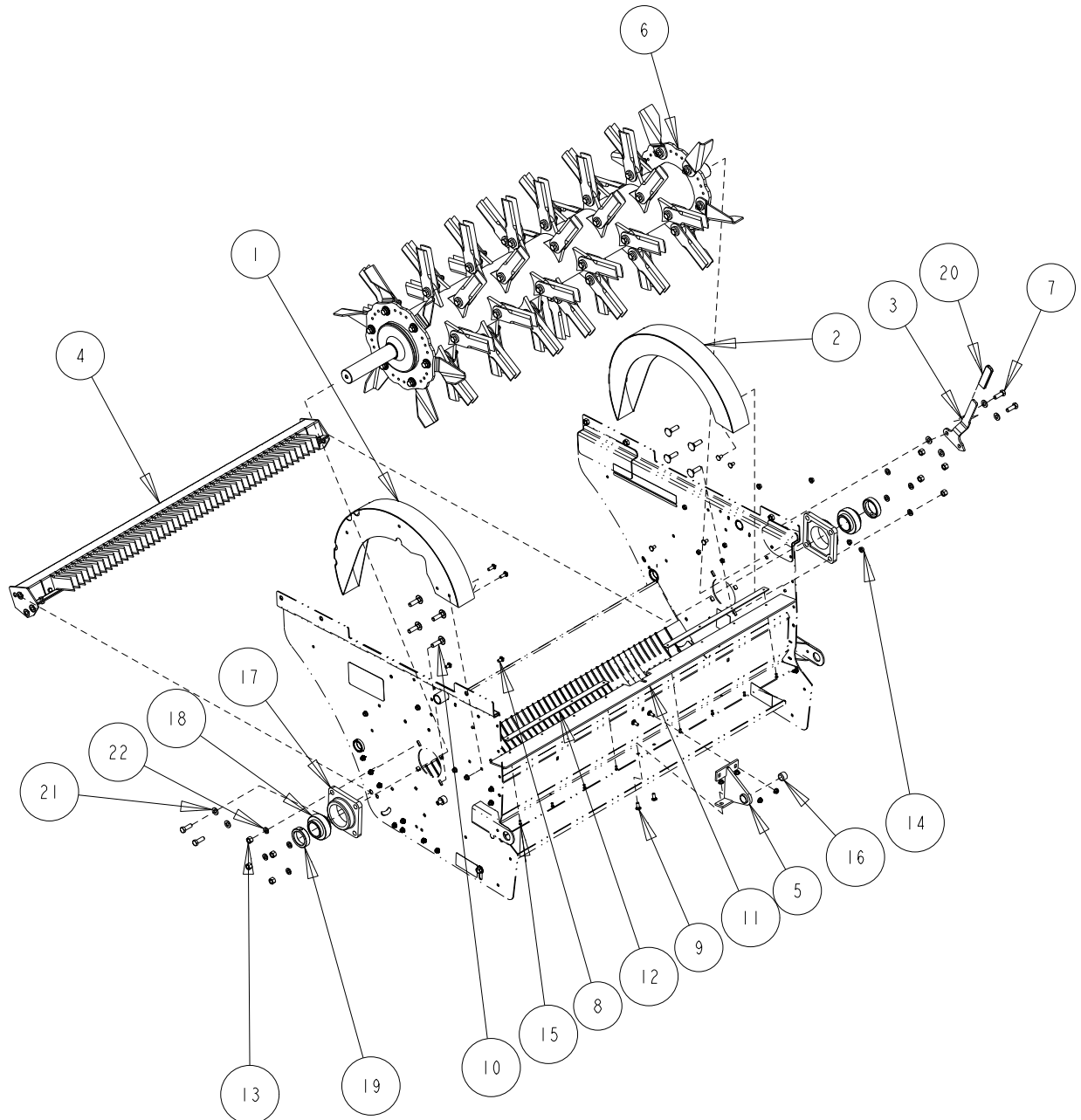
ITEM NO.	PART NO.	DESCRIPTION	QTY	NOTE
1	CG455BA	SIDEWALL LT BASE CHOPPER MY17	1	SIDE WALL WITH DECALS
2	CG456BA	SIDEWALL RT BASE CHOPPER MY17	1	SIDE WALL WITH DECALS
3	B2IM-0820	BOLT FLG M8X20 C8.8 YZD Iso8102	14	
4	B2IM-1225	BOLT FLG M12X25 C8.8 YZD Iso8102	2	
5	B3IM-0820	BOLT RH M8x20 C8.8 YZD ISO8678 SHORT NECK4		
6	CGI60B	GUARD KNIFE BAR 55L	1	
7	CG422B	FLOOR CHOPPER 55W	1	
8	CG424B	FLOOR EXTENSION CHOPPER 55W	1	
9	CG426B	CHOPPER RR PANEL 55L	1	
10	N2IM-08	NUT FLG M8 C8 YZD Iso4161	24	
11	RP240	DECAL REDEKOP	1	
12	RP873	DECAL EU SAFETY CHECK SERVICE	1	
13	RP896	DECAL WINDROW FLOOR ADJ	2	
14	RP942	DECAL EU KNIFE BAR ADJ	1	

CaseIH 240 Series MAV Chopper
Chopper Housing Components

Date:24JAN2017

Serial No Range From:
RM25015

Serial No Range To:
RM25329



CS0145-02-4

Indicate implement serial number with any parts order _____

CaseIH 240 Series MAV Chopper
Chopper Housing Components

Date:24JAN2017

Serial No Range From:
RM25015

Serial No Range To:
RM25329

ITEM NO.	PART NO.	DESCRIPTION	QTY	NOTE
1	CG223BL	SHROUD FAN LT BCHOP	1	
2	CG223BR	SHROUD FAN RT BCHOP	1	
3	CG247BA	ASSY KBAR HANDLE W/ INDICATOR	1	
4	CG352BA	KNIFE BAR ASSY MAV 55L W/O PADDLES	1	
5	CG428B	BRACKET TBOARD SUPPORT	1	
6	CG751BA	ROTOR MAV FG 55W 8R WIDE SPREAD	1	
7	BIIM-1235	BOLT HEX M12X35 C8.8 YZD Iso4014	4	
8	B3IM-0816	BOLT RH M8x16 C8.8 YZD ISO8678 SHORT NECK 10		
9	B3IM-0820	BOLT RH M8x20 C8.8 YZD ISO8678 SHORT NECK 8		
10	B36M-1245	BOLT RH M12x45 C8.8 YZD ISO8677 LONG NECK 8		
11	CG226-01	BELT TBOARD SEAL 55W	1	
12	CG228B	STRAP BELT SEAL 55W	2	
13	NIIM-12	NUT HEX M12 C8 YZD ISO4032	8	
14	N2IM-08	NUT FLG M8 C8 YZD Iso4161	56	
15	RO3-08	RIVET .188 X .375 SS	8	
16	RPI09	BUSHING NYL .76 ID 1.005 OD .75L	1	
17	RP238	BEARING FLANGE 4B F210	2	
18	RP295	BEARING BALL SPH 50mm ID ECL UEL	2	C/W RP296
19	RP296	LOCK COLLAR ECL 50mm ID	2	NSS - ORDER RP295
20	RP309	GRIP .25 X 1 X 4	1	
21	WIIM-12	WASHER FLAT M12 x 25.4 x 2.8 YZD	8	
22	W2IM-12	WASHER HELICAL LOCK M12	8	
17,18,19	RP295A	BEARING ASSY 50mm ID ECL 4B CAST FLG	2	INCLUDES # 17,18,19

NSS = NOT SERVICED SEPARATLY

CSOI45-02-5

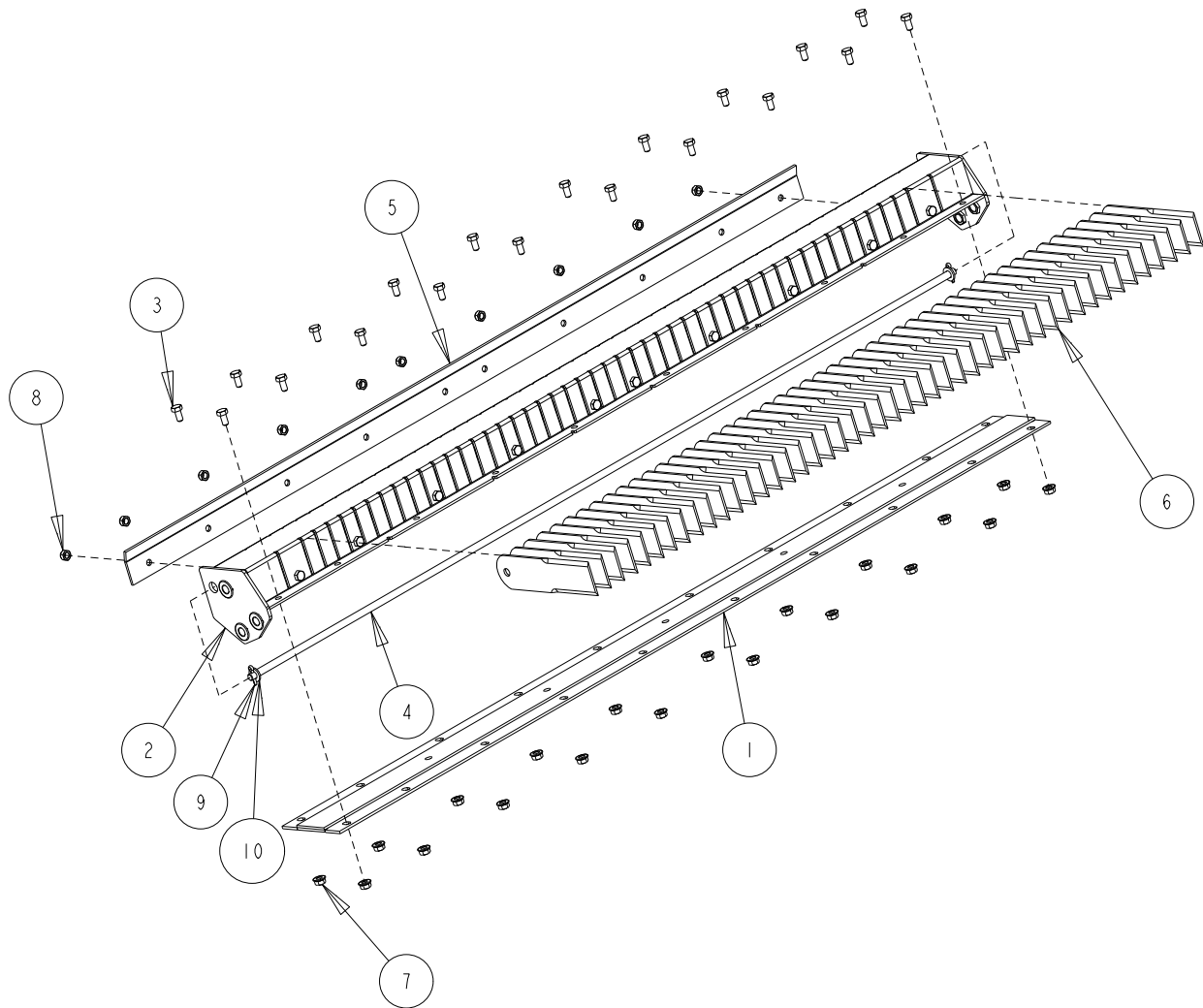
Indicate implement serial number with any parts order _____

CaseIH 240 Series MAV Chopper
Chopper Knife Bar Components

Date: 24JAN2017

Serial No Range From:
RM25015

Serial No Range To:
RM25329



CS0145-02-6

Indicate implement serial number with any parts order _____

CaseIH 240 Series MAV Chopper
Chopper Knife Bar Components

Date:24JAN2017

Serial No Range From:
RM25015

Serial No Range To:
RM25329

ITEM NO.	PART NO.	DESCRIPTION	QTY	NOTE
1	CGI52B	BACKPLATE KBAR W 55L	1	
2	CG351B	FRAME KNIFE BAR /W 55L	1	
3	BIIM-0816	BOLT HEX M8X16 C8.8 YZD Iso4014	20	
4	CGI53B	ROD KNIFE BAR 55L	1	
5	CGI54B	PLATE PRESS KBAR 55L	1	
6	HA700	BLADE STR KNIFE BAR	47	
7	N2IM-08	NUT FLG M8 C8 YZD Iso4161	20	
8	N42M-08	NUT LOCK STL M8 C10 YZD DIN980V	10	
9	P2IM-0322	PIN COTTER M3X22	2	
10	WIIM-10	WASHER FLAT M10 x 20 x 2.3 YZD	2	

CSOI45-02-7

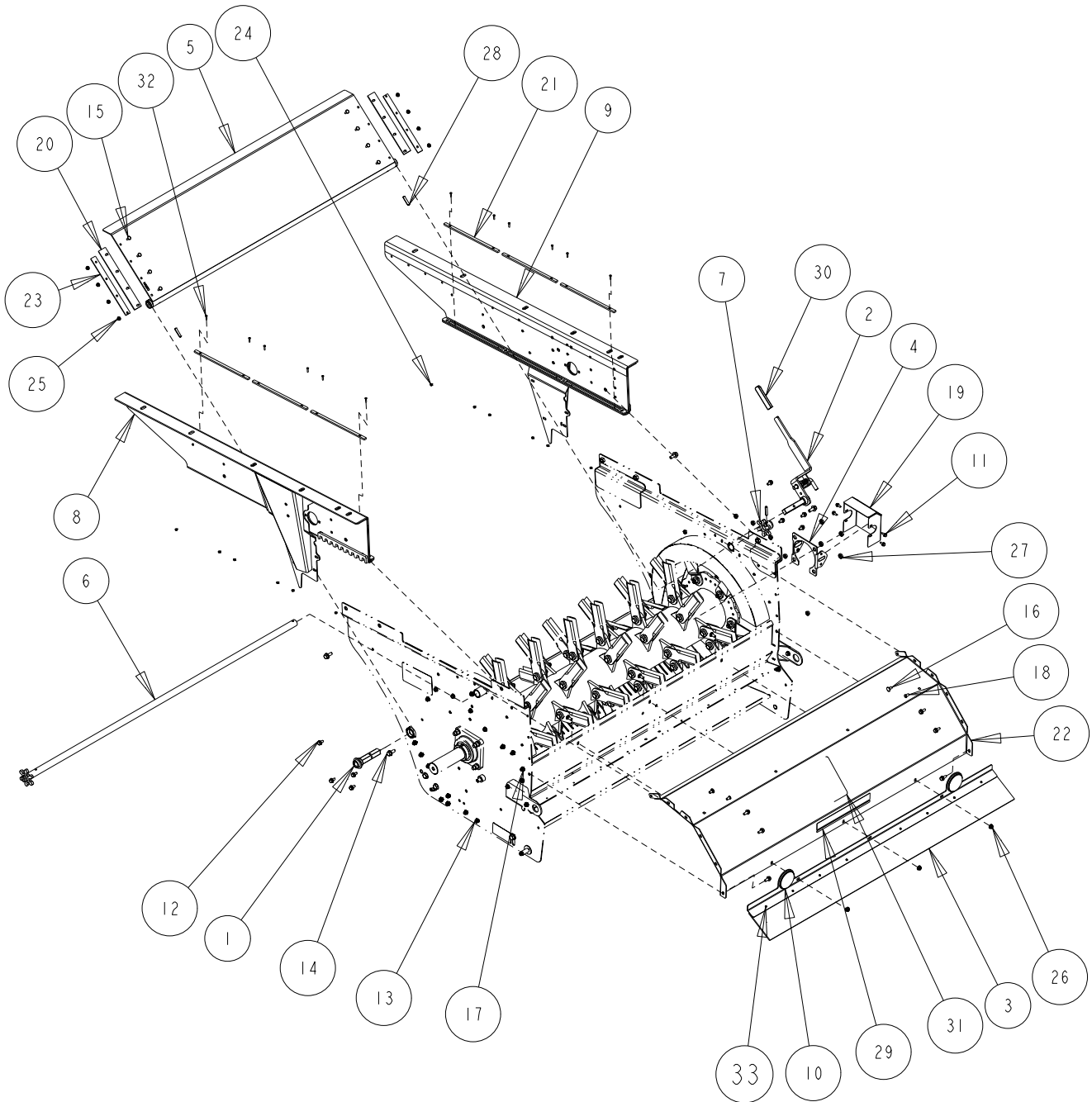
Indicate implement serial number with any parts order _____

CaseIH 240 Series MAV Chopper
Chopper Upper Mounts

Date:24JAN2017

Serial No Range From:
RM25015

Serial No Range To:
RM25329



CSOI45-02-8

Indicate implement serial number with any parts order _____

CaseIH 240 Series MAV Chopper
Chopper Upper Mounts

Date:24JAN2017

Serial No Range From:
RM25015

Serial No Range To:
RM25329

ITEM NO.	PART NO.	DESCRIPTION	QTY	NOTE
1	CG13IZ	PIVOT PIN CHOPPER DOOR	1	
2	CG245BA	HANDLE ADJ I3 5/8L ASSY	1	
3	CG445B	SEAL TOP TBOARD 55W	1	
3	CG446-01	BELT TAILBOARD SEAL 55W	1	
4	CH339B	MOUNT BRACKET SPEED SENSOR	1	
5	CS542B	DOOR CHAFF AFX ABRASION RESITANT	1	
6	CS569B	CHOPPER SLIDE SHAFT	1	
7	CS570B	CHOPPER SLIDE GEAR	1	
8	CS940BL	AFX UPPER GUSSET LT	1	
9	CS940BR	AFX UPPER GUSSET RT	1	
10	437024	AFX REAR REFLECTOR	2	
11	B2IM-0616	BOLT FLG M6X16 C8.8 YZD Iso8102	4	
12	B2IM-0816	BOLT FLG M8X16 C8.8 YZD Iso8102	8	
13	B2IM-0820	BOLT FLG M8X20 C8.8 YZD Iso8102	22	
14	B2IM-1025	BOLT FLG M10X25 C8.8 YZD Iso8102	4	
15	B3IM-0616	BOLT RH M6X16 C8.8 YZD ISO8678 Short Neck	8	
16	B3IM-0816	BOLT RH M8X16 C8.8 YZD ISO8678 Short Neck	12	
17	B3IM-0820	BOLT RH M8X20 C8.8 YZD ISO8678 Short Neck	7	
18	B6IM-0816	BOLT SOCKET CAP M8 X 16 C8.8 YZD	2	
19	CH340B	SHIELD SPEED SENSOR	1	
20	CS547-01	BELT DOOR SEAL 5H 19.5L	2	
21	CS557-01	BEARING CHOPPER SLIDE	6	
22	CS564B	HOOD CHOPPER 55W DELUXE	1	
23	CS589B	BACKPLATE CHP DOOR 4H 10.5L	2	
24	N11-02	NUT HEX #8-32 GR5 ZN	12	
25	N2IM-06	NUT FLG M6 C8 YZD Iso4161	8	
26	N2IM-08	NUT FLG M8 C8 YZD Iso4161	69	
27	N3IM-12	NUT JAM M12 C8 YZD Iso4035	4	
28	PIIM-0840	PIN ROLL 08 X 40	3	
29	RP240	DECAL REDEKOP	2	
30	RP309	GRIP .25 X 1 X 4	2	
31	RP872	DECAL SAFETY PROJECTILE HAZARD	1	
32	S5I-0808	SCREW PHILIPS 8-32 FLAT HEAD	12	
33	RO3-08	RIVET SS .188 X .375 GR	8	

CS0145-02-9

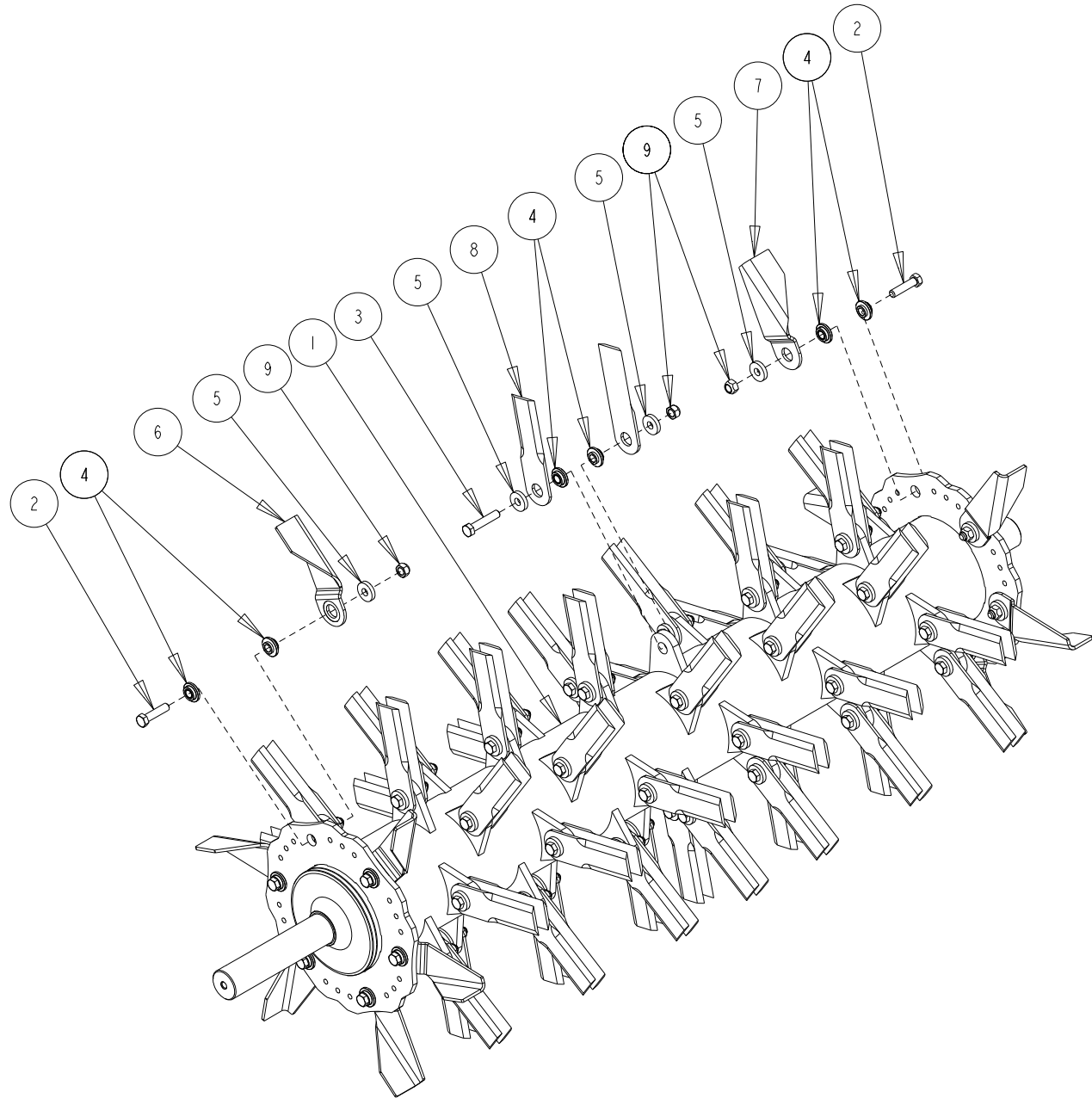
Indicate implement serial number with any parts order _____

CaseIH 240 Series MAV Chopper
Chopper Rotor Components - Wide Spread

Date:24JAN2017

Serial No Range From:
RM25015

Serial No Range To:
RM25329



CS0145-02-10

Indicate implement serial number with any parts order _____

CaseIH 240 Series MAV Chopper
Chopper Rotor Components - Wide Spread

Date:24JAN2017

Serial No Range From:
RM25015

Serial No Range To:
RM25329

ITEM NO.	PART NO.	DESCRIPTION	QTY	NOTE
1	CG751BA	ROTOR MAV FG 55W 8R WIDE SPREAD	1	8 ROW ROTOR - WIDE SPREAD
1	CG752BA	ROTOR MAV FG 55W 8R STD SPREAD	1	8 ROW ROTOR - STANDARD SPREAD
1	CG731BA	ROTOR MAV FG 55W 4R WIDE SPREAD	1	4 ROW ROTOR - WIDE SPREAD
1	CG730BA	ROTOR MAV FG 55W 4R STD SPREAD	1	4 ROW ROTOR - STANDARD SPREAD
2	B12M-1250	BOLT HEX M12X50 C10.9 YZD Iso4014	12	
3	B12M-1260	BOLT HEX M12X60 C10.9 YZD Iso4014	48	
4	HA553	BUSHING .885 BD .750 LD .485 ID MAV Std	120	NSS - ORDER KIT BK553
4	BK553	BUSHING KIT - HA553 (20)	7	
5	HA555	WASHER ROTOR .485ID 1.250D	108	NSS - ORDER KIT BK555
5	BK555	WASHER KIT - HA555 (20)	6	
6	HA570L	BLADE FAN 2 INCH LT	6	NSS - ORDER KIT BK570L
6	BK570L	BLADE KIT - HA570L (6-LEFT)	1	LEFT BLADES
6	HA550L	BLADE FAN 1.5 INCH LT	6	NSS - ORDER KIT BK550L
6	BK550L	BLADE KIT - HA550L (6-LEFT)	1	LEFT BLADES
7	HA570R	BLADE FAN 2 INCH RT	6	NSS - ORDER KIT BK570R
7	BK570R	BLADE KIT - HA570R (6-RIGHT)	1	RIGHT BLADES
7	HA550R	BLADE FAN 1.5 INCH RT	6	NSS - ORDER KIT BK550R
7	BK550R	BLADE KIT - HA550R (6-RIGHT)	1	RIGHT BLADES
8	HA650C	BLADE STRAIGHT MAV CARBIDE	96	NSS - ORDER KIT BK650C
8	BK650C	BLADE KIT HA650C (8)	12	
9	N42M-12	NUT LOCK STL M12 C10 YZD DIN980V	60	

NSS = NOT SERVICED SEPARATELY

CSOI45-02-II

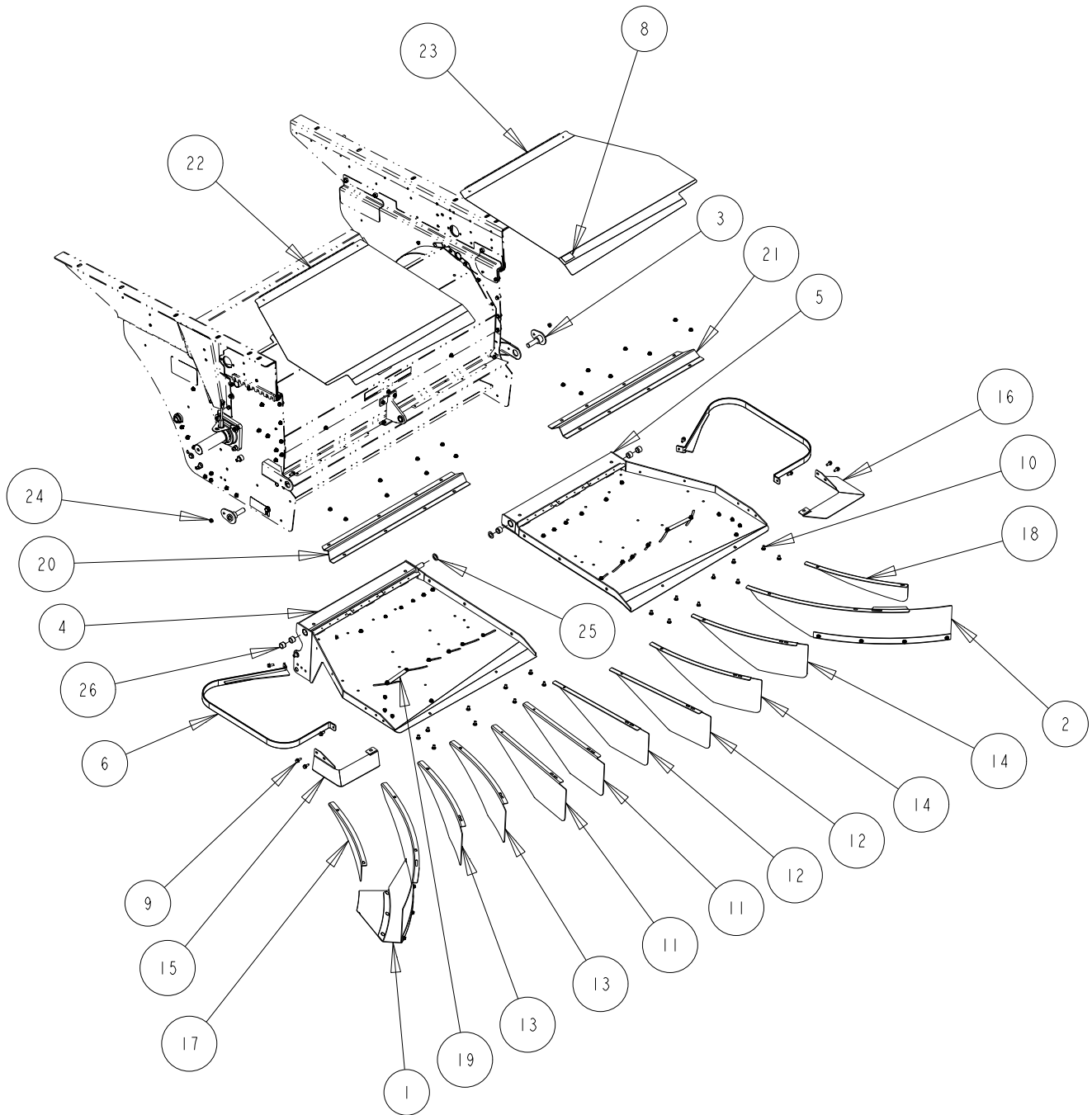
Indicate implement serial number with any parts order _____

CaseIH 240 Series MAV Chopper
Chopper Tailboard Components - Wide Spread

Date: 24JAN2017

Serial No Range From:
RM25015

Serial No Range To:
RM25329



CS0145-02-12

Indicate implement serial number with any parts order _____

CaseIH 240 Series MAV Chopper
Chopper Tailboard Components - Wide Spread

Date:24JAN2017

Serial No Range From:
RM25015

Serial No Range To:
RM25329

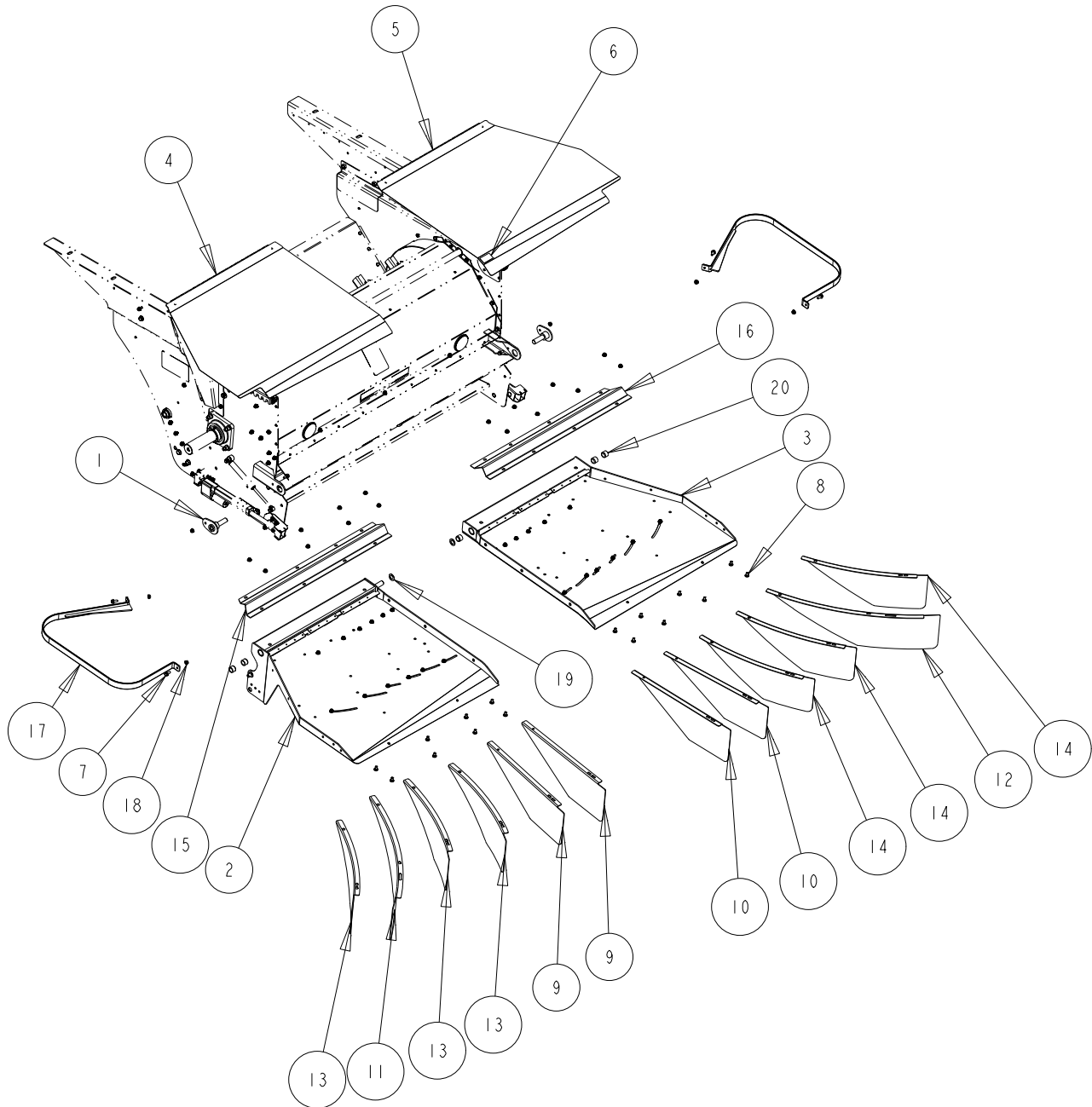
ITEM NO.	PART NO.	DESCRIPTION	QTY	NOTE
1	CG237BAL	FIN 40L LT WIDE SPREAD	1	
2	CG237BAR	FIN 40L RT WIDE SPREAD	1	
3	CG44IZ	PIN TAILBOARD PVT	2	
4	CG46OBL	TAILBOARD 55W LT MY17	1	
5	CG46OBR	TAILBOARD 55W RT MY17	1	
6	CSI7IB	CHOPPER GUARD HOOP	2	
7	RP95IA	SPRING GAS SHOCK ASSY HD 220lb	2	
8	8439435I	DECAL SAFETY PINCH POINT	1	
9	B2IM-0820	BOLT FLG M8X20 C8.8 YZD Iso8102	32	
10	B3IM-0816	BOLT RH M8x16 C8.8 YZD ISO8678 Short Neck	68	
11	CG116BL	FIN STR 22L LT	2	
12	CG116BR	FIN STR 22L RT	2	
13	CG120BL	FIN CRV LT 22L	2	
14	CG120BR	FIN CRV RT 22L	2	
15	CG235BL	EXTENSION TBOARD LT	1	
16	CG235BR	EXTENSION TBOARD RT	1	
17	CG236BL	FIN CRV LT 19L x 4H	1	
18	CG236BR	FIN CRV RT 19L x 4H	1	
19	CG243B	LINK WSPREAD FINS	2	
20	CG357BL	SUPPORT TAILBOARD LT 55W	1	
21	CG357BR	SUPPORT TAILBOARD RT 55W	1	
22	CG462BL	PANEL TAILBOARD LT 55W MY17	1	
23	CG462BR	PANEL TAILBOARD RT 55W MY17	1	
24	N2IM-08	NUT FLG M8 C8 YZD Iso416I	143	
25	RPI08	M.B. .76ID X 1.25OD X .06TK	2	
26	RPI09	BUSHING NYL .76 ID 1.005 OD .75L	6	
	CG120K	KIT CONVERT WIDE TO STANDARD SPREAD	1	INCLUDES FAN BLADES AND FINS

CaseIH 240 Series MAV Chopper
Chopper Tailboard Components - Standard Spread

Date: 24JAN2017

Serial No Range From:
RM25015

Serial No Range To:
RM25329



CS0145-02-14

Indicate implement serial number with any parts order _____

CaseIH 240 Series MAV Chopper
Chopper Tailboard Components - Standard Spread

Date:24JAN2017

Serial No Range From:
RM25015

Serial No Range To:
RM25329

ITEM NO.	PART NO.	DESCRIPTION	QTY	NOTE
1	CG44IZ	PIN TBOARD PVT	2	
2	CG460BL	TAILBOARD ASSY LT 55W EU MY17	1	
3	CG460BR	TAILBOARD ASSY RT 55W EU MY17	1	
4	CG462BL	COVER TBOARD PANEL LT 55 MY17	1	
5	CG462BR	COVER TBOARD RT 55W MY17	1	
6	8439435I	DECAL SAFETY PINCH POINT	1	
7	B2IM-0820	BOLT FLG M8X20 C8.8 YZD Iso8102	29	
8	B3IM-0816	BOLT RH M8x16 C8.8 YZD ISO8678 Short Neck	52	
9	CG116BL	FIN STR 22L LT	2	
10	CG116BR	FIN STR 22L RT	2	
11	CG119BL	FIN CRV LT 31L	1	
12	CG119BR	FIN CRV RT 31L	1	
13	CG120BL	FIN CRV LT 22L	3	
14	CG120BR	FIN CRV RT 22L	3	
15	CG357BL	SUPPORT TBOARD LT 55W	1	
16	CG357BR	SUPPORT TBOARD RT 55W	1	
17	CS171B	TAILBOARD GUARD	2	
18	N2IM-08	NUT FLG M8 C8 YZD Iso4161	131	
19	RPI08	M.B. .76ID X 1.25OD X .06TK	2	
20	RPI09	BUSHING NYL .76 ID 1.005 OD .75L	6	
	810-060	KIT MAV WIDE SPREAD UPGRADE	1	INCLUDES FAN BLADES AND FINS

CS0145-02-15

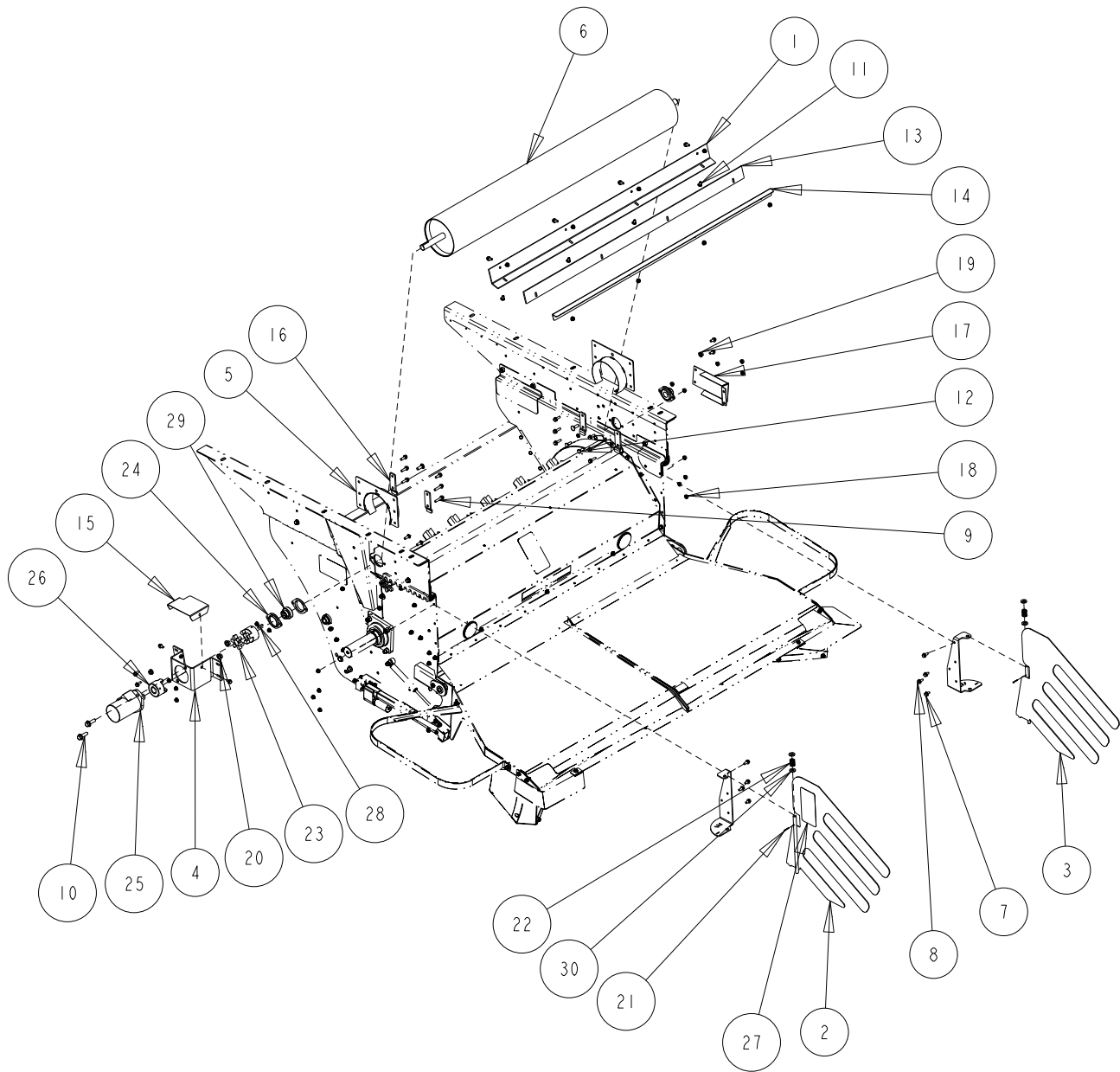
Indicate implement serial number with any parts order _____

CaseIH 240 Series MAV Chopper
Chopper Windrow Components

Date: 24JAN2017

Serial No Range From:
RM25015

Serial No Range To:
RM25329



CS0145-02-16

Indicate implement serial number with any parts order _____

CaseIH 240 Series MAV Chopper
Chopper Windrow Components

Date:24JAN2017

Serial No Range From:
RM25015

Serial No Range To:
RM25329

ITEM NO.	PART NO.	DESCRIPTION	QTY	NOTE
1	CH259B	MOUNT ROLLER STRIPPER 55W	1	
2	CS537BAL	DEFLECTOR STRAW CASE IH 40S LT ASSY	1	
3	CS537BAR	DEFLECTOR STRAW CASE IH 40S RT ASSY	1	
4	CS555B	MOUNT W/ ROLLER DRV	1	
5	CS558B	COVER ROLLER DISCHARGE TUBE	2	
6	CS568B	ROLLER DISCHARGE AFX	1	
7	B2IM-0816	BOLT FLG M8X16 C8.8 YZD Iso8102	18	
8	B2IM-0820	BOLT FLG M8X20 C8.8 YZD Iso8102	42	
9	B2IM-0840	BOLT FLG M8X40 C8.8 YZD Iso8102	3	
10	B2IM-1240	BOLT FLG M12X40 C8.8 YZD Iso8102	2	
11	B3IM-0816	BOLT RH M8x16 C8.8 YZD ISO8678 Short Neck	72	
12	B3IM-0825	BOLT RH M8x25 C8.8 YZD ISO8678 Short Neck	8	
13	CH260-01	WEAR STRIP 55W	1	
14	CH272B	BRACKET ROLLER WIPER 55W	1	
15	CS556B	COVER ROLLER DRV MNT	1	
16	CS559Z	SUPPORT TUBE DISCHARGE COVER BRACKET	4	
17	CS571B	COVER ROLLER BEARING	1	
18	N2IM-08	NUT FLG M8 C8 YZD Iso4161	167	
19	N2IM-10	NUT FLG M10 C8 YZD Iso4161	2	
20	N2IM-12	NUT FLG M12 C8 YZD Iso4161	8	
21	PII-0216	PIN ROLL .125XI YZD	3	
22	RPI10	SPRING-C .093 WR .786 OD 1.25 L	3	
23	RPI25	COUPLING LJ SPIDER	1	
24	RPI77	FLANGE FMD STL 2B 1.0 BRG	4	
25	RPI80	MOTOR HYD EATON H 5.9 2B lin Shaft	1	
26	RPI81	COUPLING LJ 1.00	2	
27	RP872	DECAL SAFETY PROJECTILE HAZARD	3	
28	RP932	KEY SQUARE .25 x .25 x 1.1 L	1	
29	RP178	BEARING BALL SPH 1.00 ID ECL AEL	2	
30	WIIM-12	WASHER FLAT M12 x 25.4 x 2.8 YZD	13	

CS0145-02-17

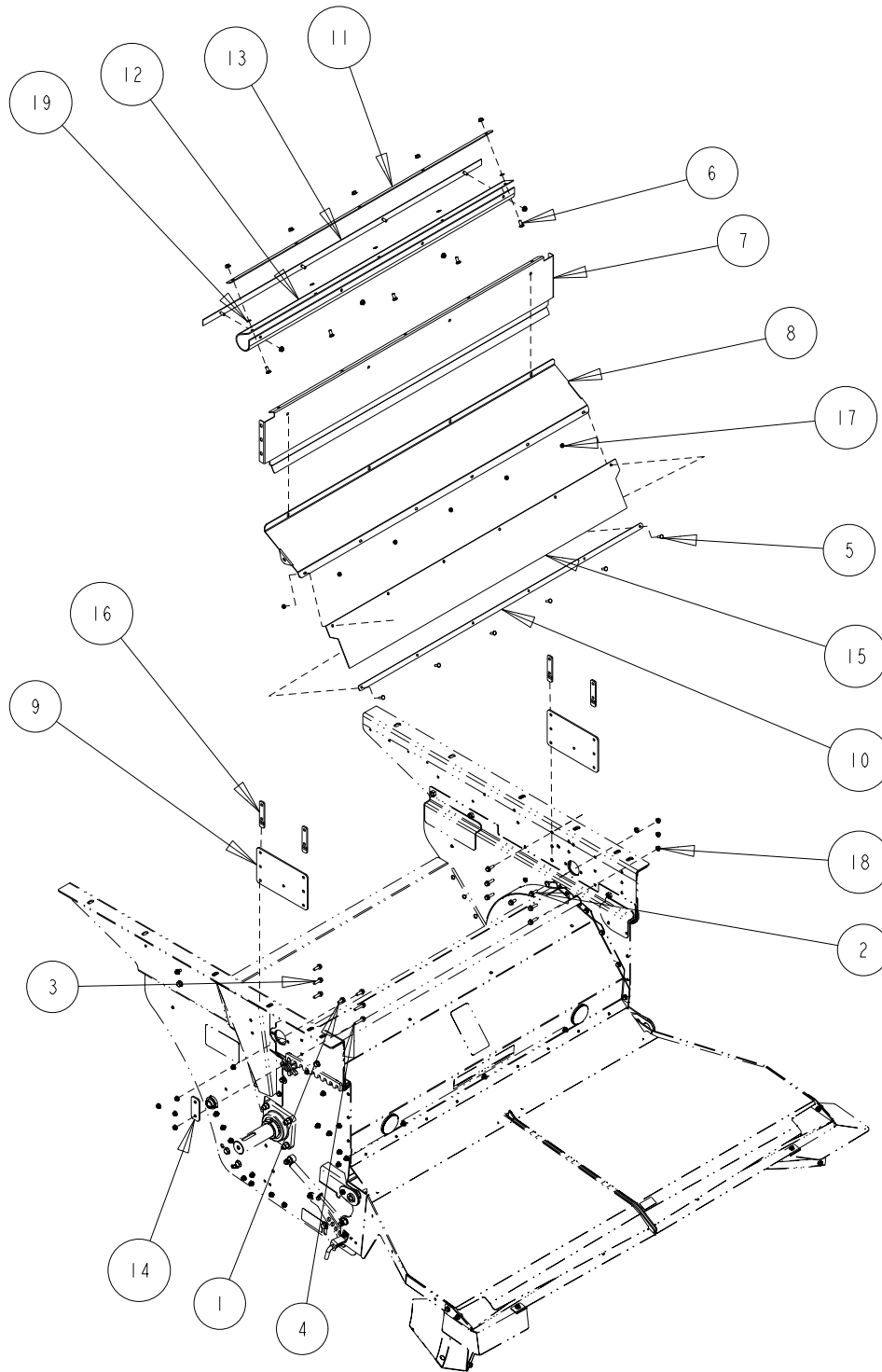
Indicate implement serial number with any parts order _____

CASEIH 240 Series MAV Chopper
Chopper Non Windrow Components

Date: 24JAN2017

Serial No Range From:
RM25015

Serial No Range To:
RM25329



CS0145-02-18

Indicate implement serial number with any parts order _____

CASEIH 240 Series MAV Chopper
Chopper Non Windrow Components

Date:24JAN2017

Serial No Range From:
RM25015

Serial No Range To:
RM25329

ITEM NO.	PART NO.	DESCRIPTION	QTY	NOTE
1	B2IM-0820	BOLT FLG M8X20 C8.8 YZD Iso8102	31	
2	B2IM-0825	BOLT FLG M8X25 C8.8 YZD Iso8102	6	
3	B2IM-0830	BOLT FLG M8X30 C8.8 YZD Iso8102	7	
4	B2IM-0840	BOLT FLG M8X40 C8.8 YZD Iso8102	2	
5	B3IM-0620	BOLT RH M6X20 C8.8 YZD ISO8678 Short Neck	6	
6	B3IM-0820	BOLT RH M8x20 C8.8 YZD ISO8678 Short Neck	18	
7	CS631B	WALL CHP REAR 55W	1	
8	CS637B	COVER PLATE CHPR HOOD	1	
9	CS638B	PANEL SIDE AFX	2	
10	CS642B	STRAP REAR RUBBER	1	
11	CS664B	STRAP AFX DOOR SEAL	1	
12	CS665-01	BELT DOOR SEAL AFX	1	
13	CS668B	STRAP BELT SEAL CHOPPER WALL	1	
14	CS704Z	AFX SHIELD MOUNT SPACER	1	
15	CS902-01	BELTING FOR CS637B COVER REAR AFX	1	
16	CS903Z	SUPPORT TUBE DISCHARGE COVER BRACKET	4	
17	N2IM-06	NUT FLG M6 C8 YZD Iso4161	14	
18	N2IM-08	NUT FLG M8 C8 YZD Iso4161	160	
19	N63M-08	NUT PUSH M8 YZD	5	

CS0145-02-19

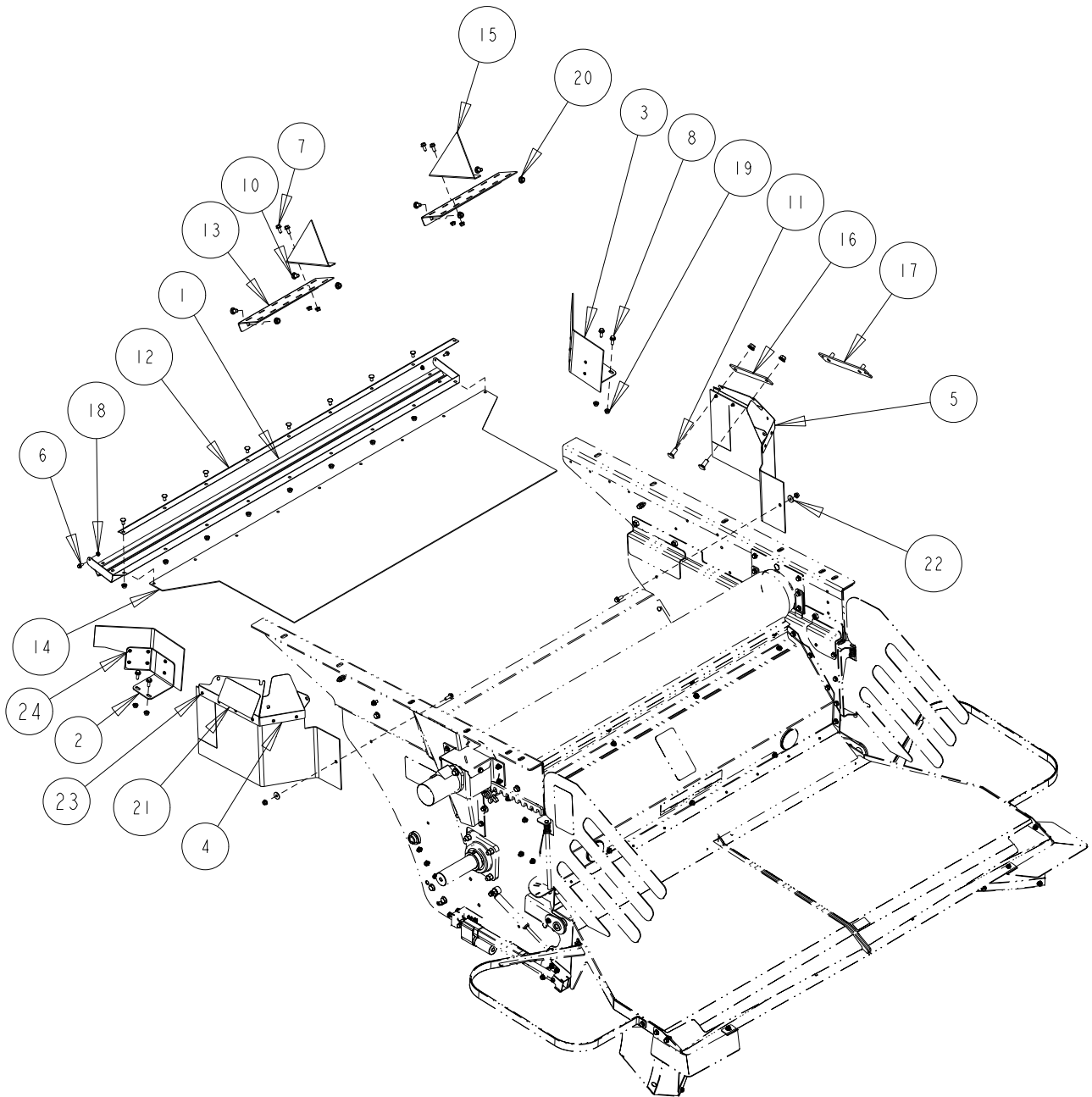
Indicate implement serial number with any parts order _____

CaseIH 240 Series MAV Chopper
Chopper Internal Deflectors

Date:24JAN2017

Serial No Range From:
RM25015

Serial No Range To:
RM25329



CSOI45-02-20

Indicate implement serial number with any parts order _____

CaseIH 240 Series MAV Chopper
Chopper Internal Deflectors

Date:24JAN2017

Serial No Range From:
RM25015

Serial No Range To:
RM25329

ITEM NO.	PART NO.	DESCRIPTION	QTY	NOTE
1	CS484B	SIEVE EXT AFX 230/240	1	
2	CS599BAL	DEFLECTOR AFX CHAFF LT C/W BELT	1	
2	CS604-01	BELT SIEVE DEFLECT	1	
3	CS599BAR	DEFLECTOR AFX CHAFF RT C/W BELT	1	
3	CS604-01	BELT SIEVE DEFLECT	1	
4	CS957BAL	VENT AFX LT C/W BELT	1	
4	CS958-01L	BELT AFX VENT LT	1	
5	CS957BAR	VENT AFX RT C/W BELT	1	
5	CS958-01R	BELT AFX VENT RT	1	
6	B2IM-0616	BOLT FLG M6X16 C8.8 YZD Iso8102	6	
7	B2IM-0820	BOLT FLG M8X20 C8.8 YZD Iso8102	47	
8	B2IM-0825	BOLT FLG M8X25 C8.8 YZD Iso8102	14	
9	B3IM-0816	BOLT RH M8x16 C8.8 YZD ISO8678 Short Neck	81	
10	B3IM-1020	BOLT RH M10X20 C8.8 YZD ISO8678 Short Neck	4	
11	B3IM-1230	BOLT RH M12X30 C8.8 YZD ISO8678 Short Neck	2	
12	CH514B	STRAP WIDE SIEVE EXT 66.5 L	1	
13	CS170B	INTERNAL BAFFLE AFX 230/240S	2	
14	CS600-01	BELT AFX 40S WIDE SIEVE EXT	1	
15	CS921B	FIN STR 13L	2	
16	CS959Z	SPACER AFX VENT RT	1	
17	CS966Z	SPACER AFX VENT RT - DEALER INSTALL	1	FIELD OR DEALER INTALL
18	N2IM-06	NUT FLG M6 C8 YZD Iso4161	10	
19	N2IM-08	NUT FLG M8 C8 YZD Iso4161	196	
20	N2IM-10	NUT FLG M10 C8 YZD Iso4161	6	
21	RP871	DECAL SAFETY RUN ON	2	
22	WI2M-08	WASHER FLAT M8 x 25.4 x 2.3 YZD	2	
23	RO3-08	RIVET SS .188 X .375 GR	24	
24	WIIM-05	WASHER FLAT M05 X 10 X 1 YZD	24	

CS0145-02-21

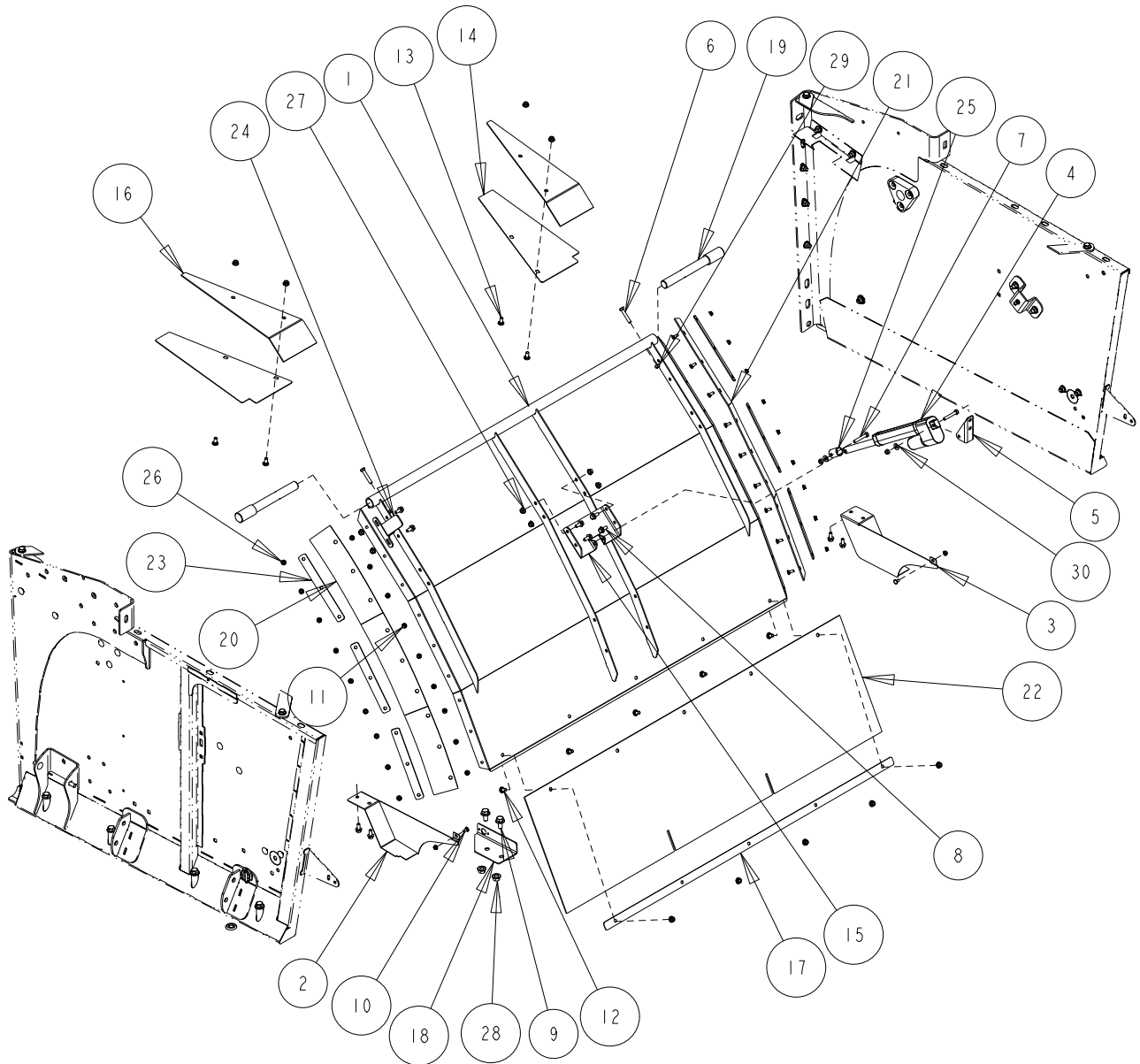
Indicate implement serial number with any parts order _____

CaseIH 240 Series MAV Chopper
Chopper Straw Door Components

Date:24JAN2017

Serial No Range From:
RM25015

Serial No Range To:
RM25329



Indicate implement serial number with any parts order _____

CaseIH 240 Series MAV Chopper
Chopper Straw Door Components

Date:24JAN2017

Serial No Range From:
RM25015

Serial No Range To:
RM25329

ITEM NO.	PART NO.	DESCRIPTION	QTY	NOTE
1	CS936BA	DOOR AFX STRAW	1	
2	CS945BL	DEFLECTOR CHAFF LT WDRW	1	
3	CS945BR	DEFLECTOR CHAFF RT WDRW	1	
4	RP940	ACTUATOR 12V 3I2+174mm w/ POT	1	
4	CS861BA	LINKAGE AFX STRAW DOOR WINDROW	1	NSS - ORDER KIT CS861K
4	CS910BA	LINKAGE AFX STRAW DOOR NON WINDROW	1	NSS - ORDER KIT CS910K
5	84127250	PIVOT MOUNT STRAW DOOR ACTUATOR	1	
6	B11M-0845	BOLT HEX M8X45 C8.8 YZD Iso4014	2	
7	B11M-0850	BOLT HEX M8X50 C8.8 YZD Iso4014	2	
8	B21M-0820	BOLT FLG M8X20 C8.8 YZD Iso8102	10	
9	B21M-1225	BOLT FLG M12X25 C8.8 YZD Iso8102	2	
10	B31M-0612	BOLT RH M6X12 C8.8 YZD ISO8678 Short Neck	2	
11	B31M-0616	BOLT RH M6X16 C8.8 YZD ISO8678 Short Neck	18	
12	B31M-0816	BOLT RH M8X16 C8.8 YZD ISO8678 Short Neck	5	
13	B31M-0820	BOLT RH M8X20 C8.8 YZD ISO8678 Short Neck	4	
14	CS468B	FILLER PLATE FOR COMBINE ROOF	2	
15	CS603B	BRACKET STRAW DOOR ACTUATOR	1	
16	CS669-01	SEAL ROOF AFX	2	
17	CS844B	STRAP AFX STRAW DOOR BTM BELT	1	
18	CS857B	PLATE LADDER SENSOR MNT	1	
19	CS937Z	PIN AFX STRAW DOOR PVT	2	
20	CS938-OIL	BELT AFX DOOR SEAL	1	
21	CS938-OIR	BELT AFX DOOR SEAL	1	
22	CS939-01	BELTING AFX STRAW DOOR	1	
23	CS942-01	STRAP AFX STRAW DOOR BTM	6	
24	CS943B	TARGET STRAW DOOR PROXIMITY	1	
25	CS960B	STOP DOOR ACTUATOR	1	
26	N21M-06	NUT FLG M6 C8 YZD Iso4161	20	
27	N21M-08	NUT FLG M8 C8 YZD Iso4161	15	
28	N21M-12	NUT FLG M12 C8 YZD Iso4161	2	
29	N42M-08	NUT LOCK STL M8 C10 YZD DIN980V	4	
30	W11M-08	WASHER FLAT M8 x 18.8 x 2.3 YZD	2	

NSS = NOT SERVICED SEPARATELY

CSOI45-02-23

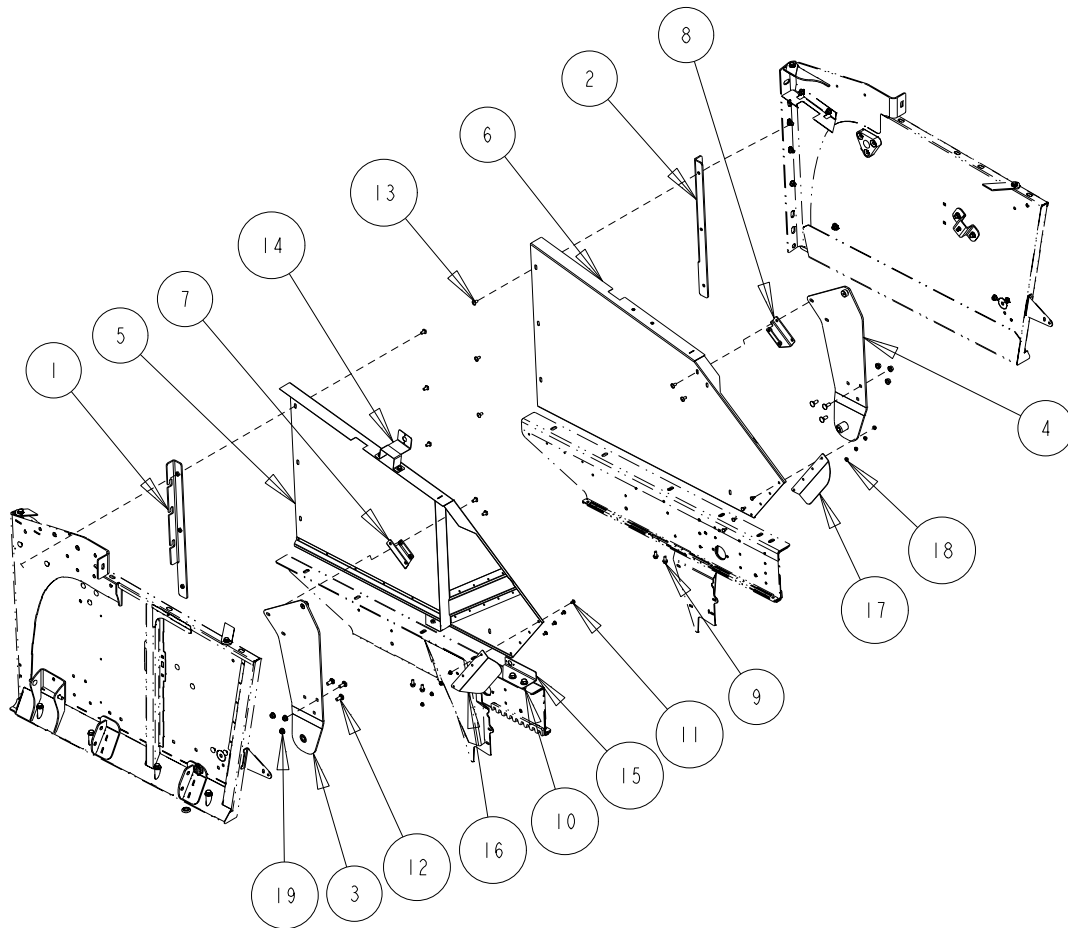
Indicate implement serial number with any parts order _____

CaseIH 240 Series MAV Chopper
Chopper Ladder Kit Components

Date:24JAN2017

Serial No Range From:
RM25015

Serial No Range To:
RM25329



CSOI45-02-24

Indicate implement serial number with any parts order _____

CaseIH 240 Series MAV Chopper
Chopper Ladder Kit Components

Date:24JAN2017

Serial No Range From:
RM25015

Serial No Range To:
RM25329

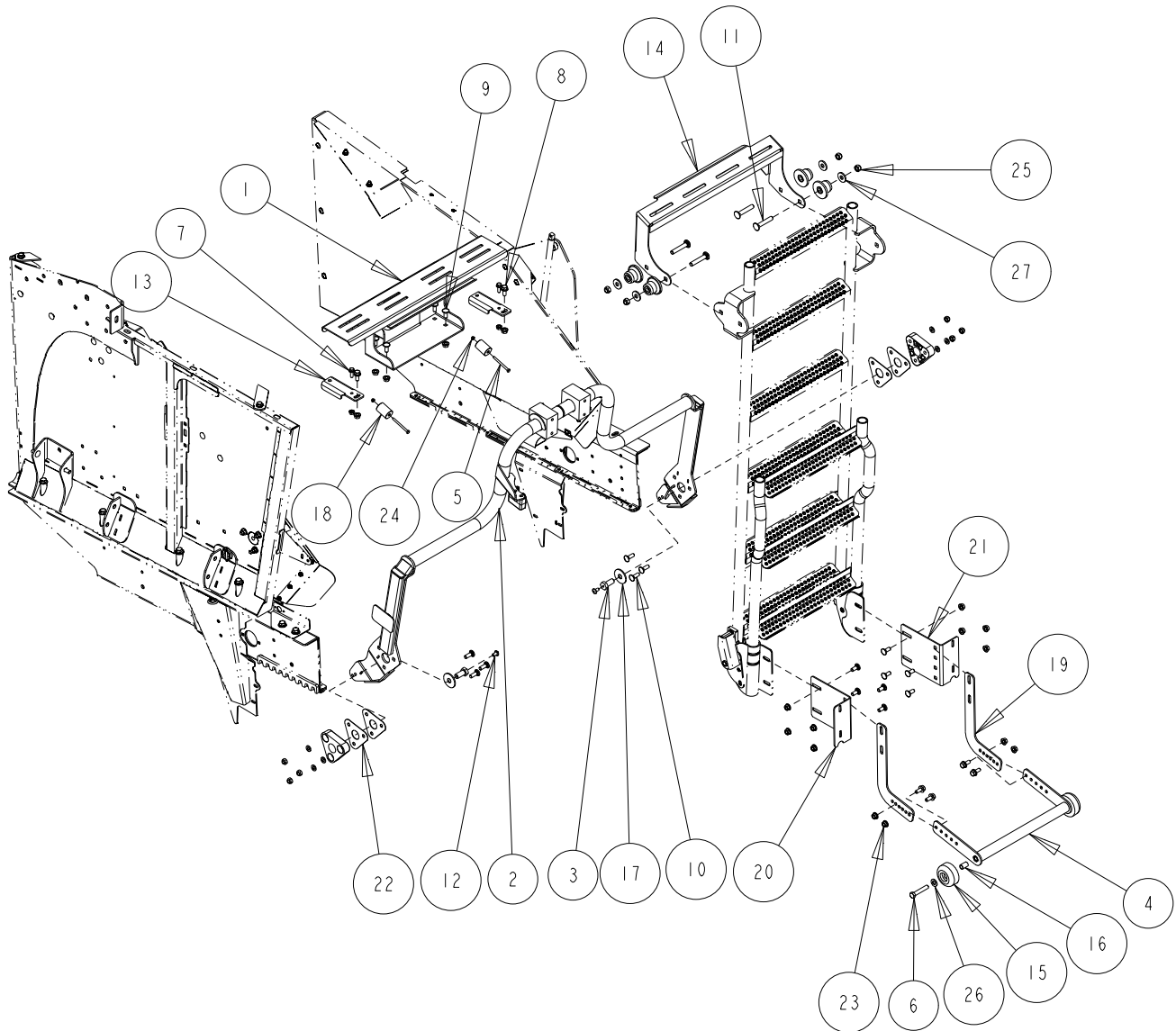
ITEM NO.	PART NO.	DESCRIPTION	QTY	NOTE
1	CS811BL	BRACKET FRONT SUBWALL MT LT	1	
2	CS811BR	BRKT LT FRT MT	1	
3	CS928BL	MOUNT LDR LT	1	
4	CS928BR	BRKT LDR LK PVT	1	
5	CS933BL	SKIN AFX LADDER LT	1	
6	CS933BR	SKIN AFX LADDER RT	1	
7	CS944BL	BRACKET TOP SKIN MT LT	1	
8	CS944BR	BRACKET TOP SKIN MT RT	1	
9	B21M-0820	BOLT FLG M8X20 C8.8 YZD Iso8102	6	
10	B21M-1225	BOLT FLG M12X25 C8.8 YZD Iso8102	2	
11	B31M-0612	BOLT RH M6X12 C8.8 YZD ISO8678 Short Neck	8	
12	B31M-1025	BOLT RH M10X25 C8.8 YZD ISO8678 Short Neck	6	
13	B38M-0816	BOLT RH ALLEN M8x16 C8.8 YZD No Neck	10	
14	CS851B	BRACKET DOOR PROX SNSR	1	
15	CS857B	PLATE LADDER SENSOR MNT	1	
16	CS947BL	DEFLECTOR STRAW AFX LT	1	
17	CS947BR	DEFLECTOR STRAW AFX RT	1	
18	N21M-06	NUT FLG M6 C8 YZD Iso4161	8	
19	N21M-10	NUT FLG M10 C8 YZD Iso4161	6	

CaseIH 240 Series MAV Chopper
Chopper Ladder Kit Components

Date: 24JAN2017

Serial No Range From:
RM25015

Serial No Range To:
RM25329



CSOI45-02-26

Indicate implement serial number with any parts order _____

CaseIH 240 Series MAV Chopper
Chopper Ladder Kit Components

Date:24JAN2017

Serial No Range From:
RM25015

Serial No Range To:
RM25329

ITEM NO.	PART NO.	DESCRIPTION	QTY	NOTE
1	CS814B	STEP TOP LADDER	1	
2	CS927B	LINK PARALELL LDR AFX	1	
3	CS934Z	BOLT LADDER FRAME	2	
4	CS950B	ASSY AFX LADDER HANDLE	1	
5	B11M-0670	BOLT HEX M6X70 C8.8 YZD Iso4014	2	
6	B12M-1265	BOLT HEX M12X65 C10.9 YZD Iso4014	2	
7	B21M-0825	BOLT FLG M8X25 C8.8 YZD Iso8102	2	
8	B21M-1025	BOLT FLG M10X25 C8.8 YZD Iso8102	6	
9	B31M-1025	BOLT RH M10X25 C8.8 YZD ISO8678 Short Neck	18	
10	B31M-1030	BOLT RH M10X30 C8.8 YZD ISO8678 Short Neck	6	
11	B31M-1270	BOLT RH M12X70 C8.8 YZD ISO8678 Short Neck	4	
12	B38M-0816	BOLT RH ALLEN M8x16 C8.8 YZD DIN11252 No Neck	2	
13	CS836B	BRACKET LDR RAIL RELOCATE	2	
14	CS842B	BRACKET LADDER STOP	1	
15	CS855-01	ROLLER RUBBER LADDER	2	
16	CS856Z	SPACER ROLLER	2	
17	CS935Z	PLATE SPACER LDR PVT	2	
18	CS948Z	SPACER LADDER BUMPER	2	
19	CS949B	PLATE LDR HANDLE ADJ	2	
20	CS951BL	BRACKET LDR HANDLE MT LT	1	
21	CS951BR	BRACKET LDR HANDLE MT LT	1	
22	CS976-01	LADDER SHIM PLATE	4	
23	N21M-10	NUT FLG M10 C8 YZD Iso4161	24	
24	N42M-06	NUT LOCK STL M6 C10 YZD DIN980V	2	
25	N42M-12	NUT LOCK STL M12 C10 YZD DIN980V	6	
26	W11M-12	WASHER FLAT M12 x 25.4 x 2.8 YZD	2	
27	W12M-12	WASHER FLAT M12 x 34 x 3.5 YZD	4	
	CS965BA	SHOCK COMPRESSOR TOOL	1	FOR REMOVAL AND INSTALLATION

CSOI45-02-27

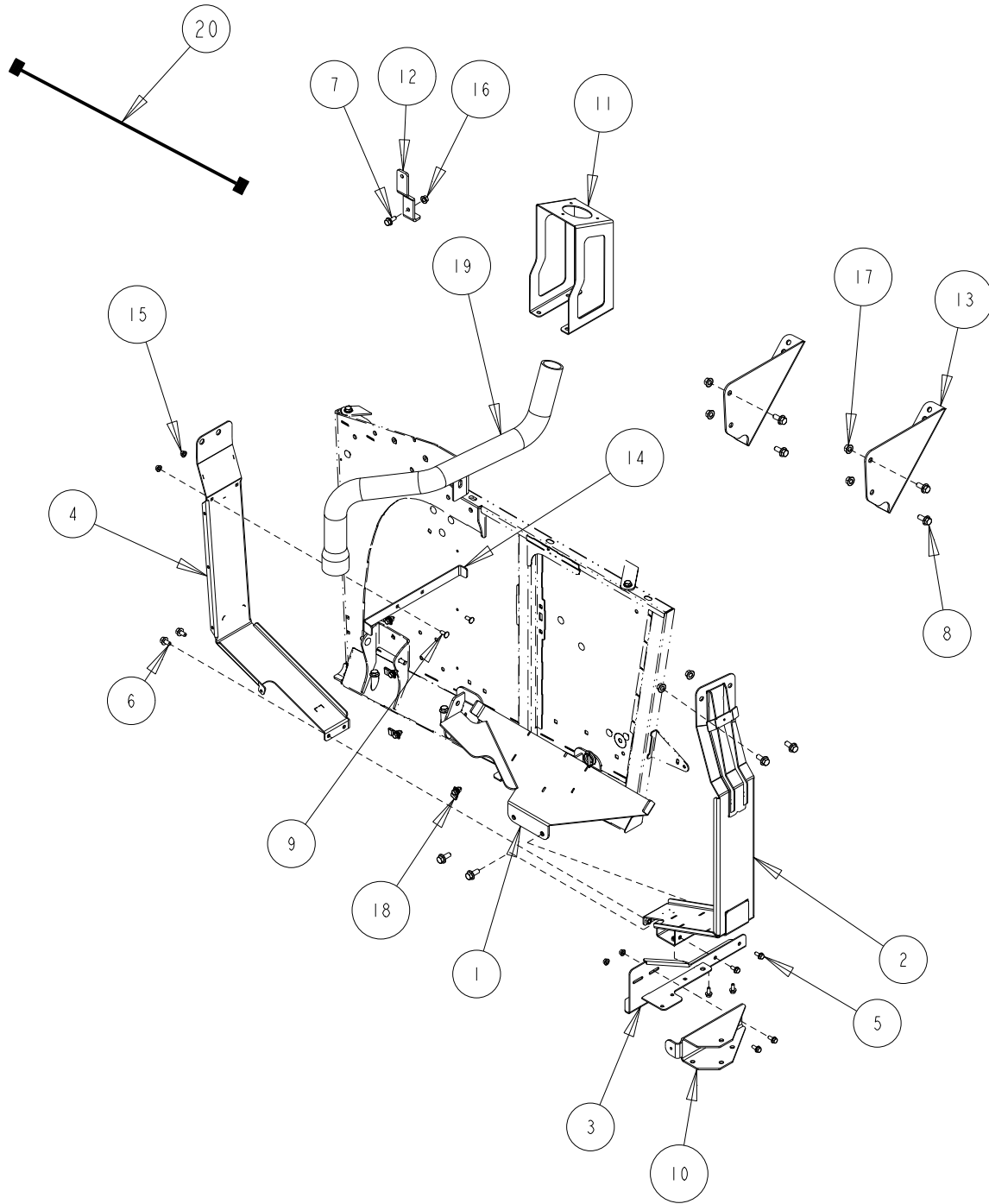
Indicate implement serial number with any parts order _____

CaseIH 240 Series MAV Chopper
Chopper DEF Tank Components

Date:24JAN2017

Serial No Range From:
RM25015

Serial No Range To:
RM25329



Indicate implement serial number with any parts order _____

CaseIH 240 Series MAV Chopper
Chopper DEF Tank Components

Date:24JAN2017

Serial No Range From:
RM25015

Serial No Range To:
RM25329

ITEM NO.	PART NO.	DESCRIPTION	QTY	NOTE
1	CS826B	BOTTOM DEF MOUNT	1	
2	CS829B	BRACKET REAR DEF HANGER	1	
3	CS831B	ARM PANEL LATCH	1	
4	CS890B	BRACKET FRONT DEF HANGER	1	
5	B2IM-0820	BOLT FLG M8X20 C8.8 YZD Iso8102	10	
6	B2IM-1020	BOLT FLG M10X20 C8.8 YZD Iso8102	2	
7	B2IM-1025	BOLT FLG M10X25 C8.8 YZD Iso8102	1	
8	B2IM-1230	BOLT FLG M12X30 C8.8 YZD Iso8102	10	
9	B3IM-0820	BOLT RH M8x20 C8.8 YZD ISO8678 Short Neck	2	
10	CS786B	BRACKET SHROUD LATCH	1	
11	CS805B	BRACKET DEF FILL TUBE	1	
12	CS835B	BRACKET DEF VENT MT	1	
13	CS862B	BRACKET 3OS AFX AIR TANK MT	2	
14	CS891B	BRACKET TOP DEF GUIDE	1	
15	N2IM-08	NUT FLG M8 C8 YZD Iso4161	8	
16	N2IM-10	NUT FLG M10 C8 YZD Iso4161	1	
17	N2IM-12	NUT FLG M12 C8 YZD Iso4161	10	
18	RP220	P-CLIP 2W .375 .75H INSULATED	4	
19	RP936	HOSE FORMED DEF FILL LINE	1	
20	RP925	HARNESS ELECTRIC 3W X 7FT AMP -240S	1	DEF HARNESS EXTENSION FIELD INSTALL

CSOI45-02-29

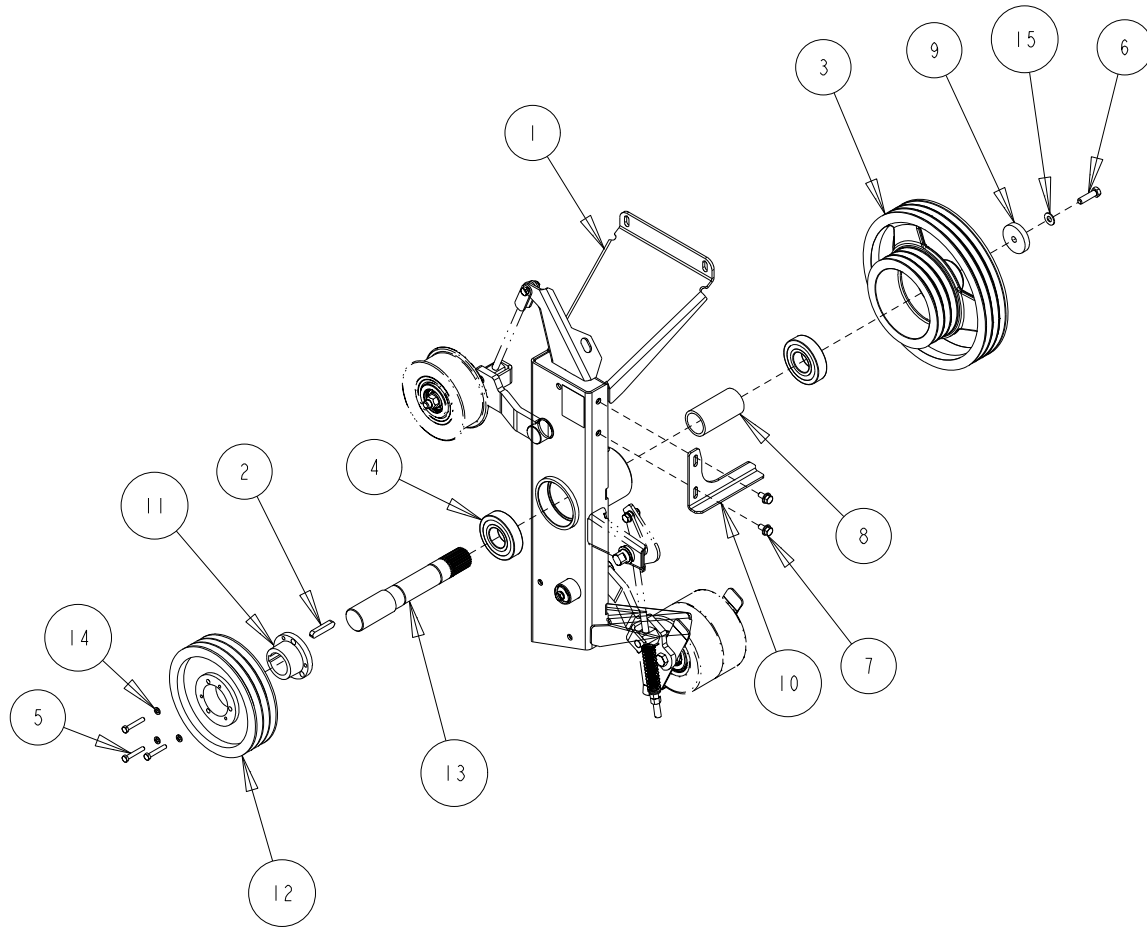
Indicate implement serial number with any parts order _____

CaseIH 240 Series MAV Chopper
Chopper Drive Mount Components

Date: 24JAN2017

Serial No Range From:
JS071

Serial No Range To:
JS191



CSOI45-02-30

Indicate implement serial number with any parts order _____

CaseIH 240 Series MAV Chopper
Chopper Drive Mount Components

Date:24JAN2017

Serial No Range From:
JS071

Serial No Range To:
JS191

ITEM NO.	PART NO.	DESCRIPTION	QTY	NOTE
1	CS771B	JACKSHAFT MACHINED AFX 3B	1	
2	323624	KEY 14 mm X 9 mm X 63 mm L	1	
3	84188127	PULLEY 3B x 2 DRIVER JACKSHAFT	1	
4	87624213	BEARING BALL FLAT 45ID 100OD 25W	2	
5	B11-0532	BOLT HEX 5/16-18X2 GRD5 BLACK	3	NSS
6	B11M-1245	BOLT HEX M12X45 C8.8 YZD Iso4014	1	
7	B21M-1020	BOLT FLG M10X20 C8.8 YZD Iso8102	2	
8	CS776-01	SLEEVE CASE JSHAFT	1	
9	CS777Z	WASHER .5 ID 2.5 OD .5 TK	1	
10	CS799B	BRACKET BELT GUIDE	1	
11	RP291	BUSHING TAPER SK 50mm ID	1	C/W B11-0532, W21-05
12	RP387	SHEAVE 3B 9.4PD SK	1	
13	RP920	SHAFT JACKSHAFT AFX	1	
14	W21-05	WASHER HELICAL LOCK 5/16	3	NSS
15	W31M-12	WASHER SPRING BVL .12 ID 27 OD 1.8 TK	1	

NSS = NOT SERVICED SEPARATLY

CS0145-02-31

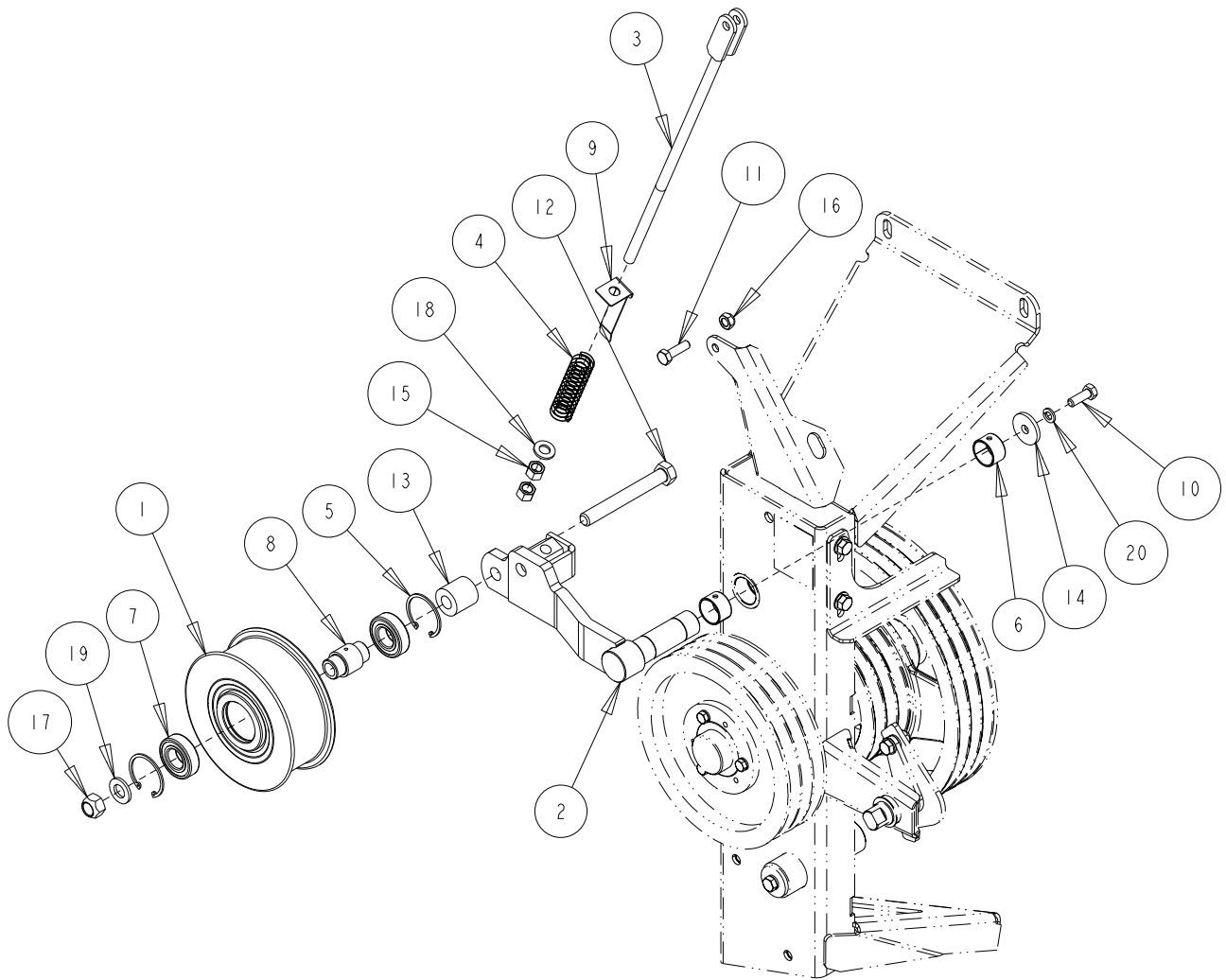
Indicate implement serial number with any parts order _____

CaseIH 240 Series MAV Chopper
Chopper Upper Arm Pivot Support Components

Date:24JAN2017

Serial No Range From:
JS071

Serial No Range To:
JS191



CSOI45-02-32

Indicate implement serial number with any parts order _____

CaseIH 240 Series MAV Chopper
Chopper Upper Arm Pivot Support Components

Date:24JAN2017

Serial No Range From:
JS071

Serial No Range To:
JS191

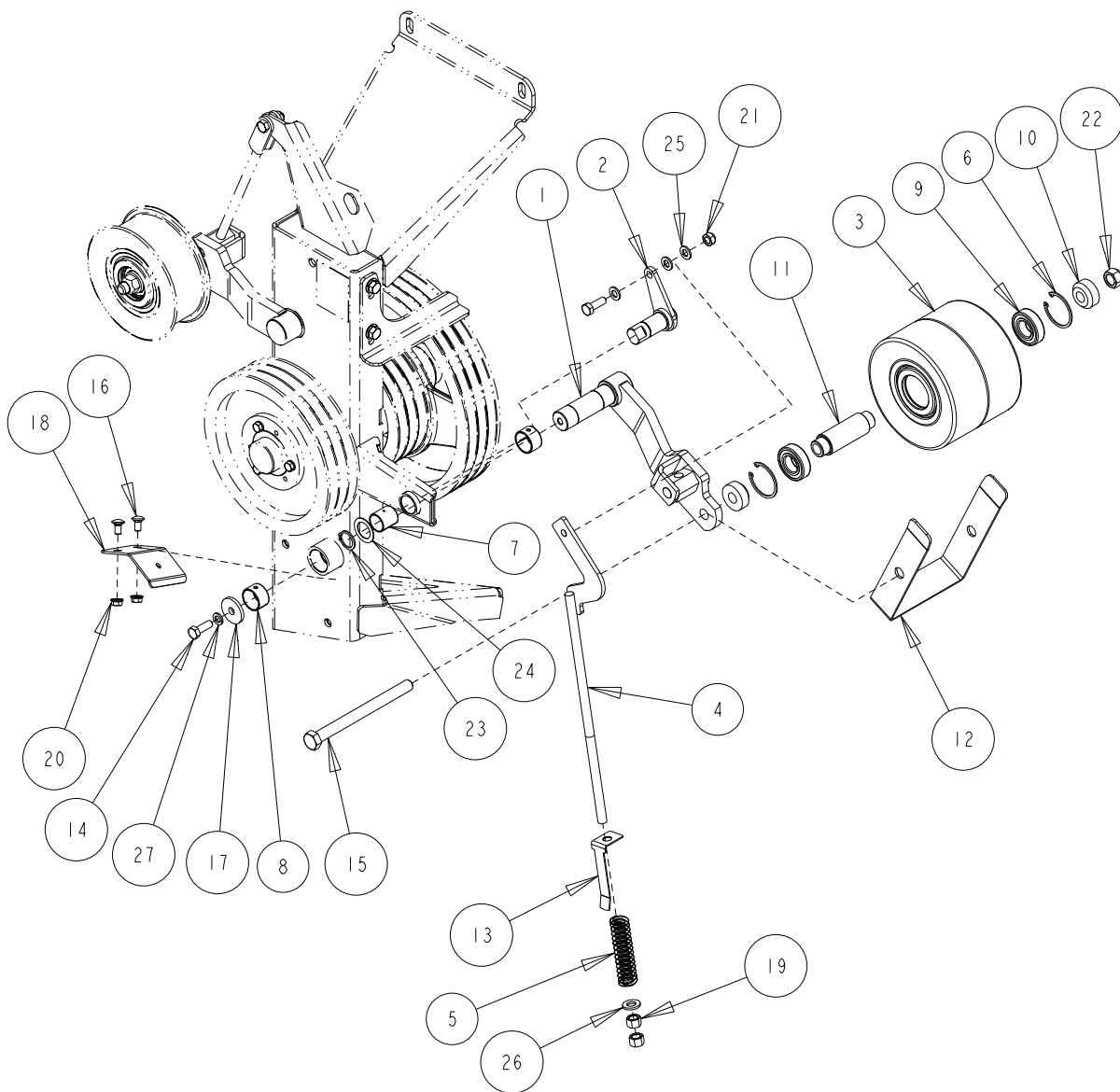
ITEM NO.	PART NO.	DESCRIPTION	QTY	NOTE
1	8407244I	IDLER ASSEMBLY	1	
2	84217450	IDLER ARM - BLACK	2	
3	CS785Z	LINK TENSION IBL	1	
4	337829	SPRING-C 5 Wr 26.5 Od 125mmL YZD	1	
5	3700II	CIRCLIP M52 x 2	2	
6	420434	BUSHING DX 30ID x 20L	4	
7	443898	BEARING BALL FLAT 25ID 52OD 15W SKF-6205-2RSH	2	
8	84287963	SPINDLE IDLER	1	
9	84522759	INDICATOR SPRING IDLER - YZD	1	
10	BIIM-1030	BOLT HEX M10X30 C8.8 YZD Iso4014	3	
11	BIIM-1035	BOLT HEX M10X35 C8.8 YZD Iso4014	1	
12	BIIM-16130	BOLT HEX M16X130 C8.8 YZD Iso4014	1	
13	CS778Z	SPACER 0.656 ID X 1.375 OD X 1.375L	1	
14	CS779Z	WASHER .438 X 1.563 X .188TK	2	
15	NIIM-12	NUT HEX M12 C8 YZD ISO4032	2	
16	N42M-10	NUT LOCK STL M10 C10 YZD DIN980V	2	
17	N42M-16	NUT LOCK STL M16 C10 YZD DIN980V	1	
18	WIIM-12	WASHER FLAT M12 x 25.4 x 2.8 YZD	1	
19	WIIM-16	WASHER FLAT M16 x 32 x 3.5 YZD	1	
20	W2IM-10	WASHER HELICAL LOCK M10	2	

CaseIH 240 Series MAV Chopper
Chopper Lower Arm Pivot Support Components

Date:24JAN2017

Serial No Range From:
JS071

Serial No Range To:
JS191



CaseIH 240 Series MAV Chopper
Chopper Lower Arm Pivot Support Components

Date:24JAN2017

Serial No Range From:
JS071

Serial No Range To:
JS191

ITEM NO.	PART NO.	DESCRIPTION	QTY	NOTE
1	84217450	IDLER ARM - BLACK	2	
2	84221090	IDLER TENSION PIVOT	1	
3	84221105	IDLER FLAT 5.35 W x 6.85 OD PAINTED	1	
4	CS781Z	TENSION ROD AFX JACKSHAFT3B	1	
5	337829	SPRING-C 5 Wr 26.5 Od 125mmL	2	
6	370011	CIRCLIP M52 X 2	2	
7	395589	BUSHING DX 25ID x 30L	1	
8	420434	BUSHING DX 30ID x 20L	4	
9	443898	BEARING BALL FLAT 25ID 52OD 15W SKF-6205-2RSH	4	
10	84007680	SPACER IDLER - YZD	2	
11	84221086	SLEEVE FLAT IDLER - PLN	1	
12	84230557	GUIDE PLATE IDLER - BLACK	1	
13	84522759	INDICATOR SPRING IDLER - YZD	2	
14	BIIM-1030	BOLT HEX M10X30 C8.8 YZD Iso4014	3	
15	BIIM-16190	BOLT HEX M16X190 C8.8 YZD Iso4014	1	
16	B31M-0816	BOLT RH M8x16 C8.8 YZD ISO8678 Short Neck	2	
17	CS779Z	WASHER .438 X 1.563 X .188TK	2	
18	CS824-01	BRACKET HYDRAULIC HOSEMOUNT	1	
19	NIIM-12	NUT HEX M12 C8 YZD ISO4032	4	
20	NIIM-16	NUT HEX M16 C8 YZD ISO4032	1	
21	N21M-08	NUT FLG M8 C8 YZD Iso4161	2	
22	N42M-10	NUT LOCK STL M10 C10 YZD DIN980V	2	
23	Q21M-25	RING SNAP EXT M25 YZD	1	
24	RPI16	M.B. 1.013 ID X 1.5 OD .045TK	1	
25	WIIM-10	WASHER FLAT M10 x 20 x 2.3 YZD	3	
26	WIIM-12	WASHER FLAT M12 x 25.4 x 2.8 YZD	2	
27	W21M-10	WASHER HELICAL LOCK M10	2	

CSOI45-02-35

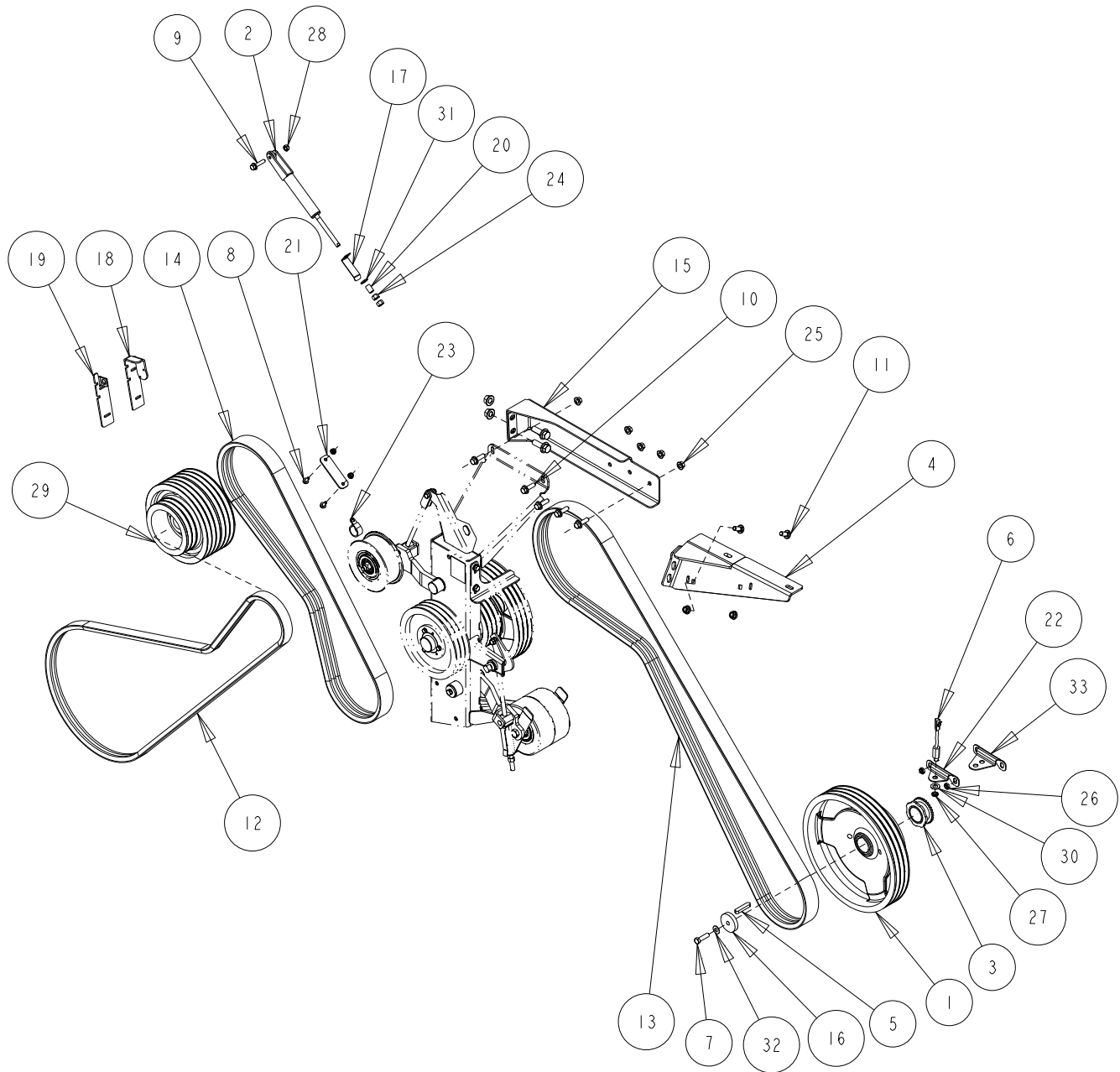
Indicate implement serial number with any parts order _____

CaseIH 240 Series MAV Chopper
Chopper Drive Components

Date:24JAN2017

Serial No Range From:
JS071 / RM25015

Serial No Range To:
JS191 / RM25329



CSOI45-02-36

Indicate implement serial number with any parts order _____

CaseIH 240 Series MAV Chopper
Chopper Drive Components

Date:24JAN2017

Serial No Range From:
JS071 / RM25015

Serial No Range To:
JS191 / RM25329

ITEM NO.	PART NO.	DESCRIPTION	QTY	NOTE
1	84188124	PULLEY 3B x 2 CHOPPER BLACK	1	
2	CS784BA	SPRING ASSY INTERNAL CHOPPER HS	1	
3	CS788Z	SPEED SENSOR AFX 7T / 30T	1	
4	CS796B	GUSSET AFX COMBINE HOOD LT	1	
5	323624	KEY 14 mm X 9 mm X 63 mm L	2	
6	47421734	SENSOR AFX SPREADER SPD 74cc MY13	1	AVAILABLE FROM CNH
7	B11M-1245	BOLT HEX M12X45 C8.8 YZD Iso4014	2	
8	B21M-0820	BOLT FLG M8X20 C8.8 YZD Iso8102	2	
9	B21M-1045	BOLT FLG M10X45 C8.8 YZD Iso8102	1	
10	B21M-1240	BOLT FLG M12X40 C8.8 YZD Iso8102	5	
11	B31M-1230	BOLT RH M12X30 C8.8 YZD ISO8678 Short Neck	2	
12	BE2B117K	VBELT 2B 117L KEVLAR	1	
13	BE3B135K	VBELT 3B 135L KEVLAR	1	
14	BE3B88K	VBELT 3B 88L KEVLAR	1	
15	CS772B	PLATE UPR JS MOUNT AFX 230/240s	1	
16	CS777Z	WASHER .5 ID 2.5 OD .5 TK	2	
17	CS797Z	INDICATOR INTERNAL CHOPPER HS SPRING 80MM	1	
18	CS837Z	BRACKET NOTCHED 240 SERIES KBAR ADJ 25%	1	
19	CS838Z	BRACKET NOTCHED 230, 20, 10 SERIES KBAR ADJ 25%	1	
20	CS856Z	SPACER ROLLER	1	
21	CS874Z	STRAP AFX SUMP LINE	1	
22	CS893Z	MOUNT PLATE AFX SPD SENSOR SINGLE	1	
23	H99-20	TUBE STRAP 1.25 OD ZN RUBBER	1	
24	N11M-12	NUT HEX M12 C8 YZD ISO4032	6	
25	N21M-12	NUT FLG M12 C8 YZD Iso4161	7	
26	N31M-12	NUT JAM M12 C8 YZD Iso4035	2	
27	N38-08	NUT JAM .5-20 UNF GR5 ZN	1	
28	N42M-10	NUT LOCK STL M10 C10 YZD DIN980V	3	
29	RP918	SHEAVE PTO REDEKOP 3B DRIVE	1	
30	W11-09	WASHER FLAT .563 ID ZN	1	
31	W11M-12	WASHER FLAT M12 x 25.4 x 2.8 YZD	3	
32	W31M-12	WASHER SPRING BVL .12 ID 27 OD 1.8 TK	2	
33	CS833-01	MOUNT PLATE AFX SPD SENSOR DOUBLE	1	FIELD INSTALL SENSOR MOUNT
	RP956	KIT LASER ALIGNMENT TOOL	1	

CSOI45-02-37

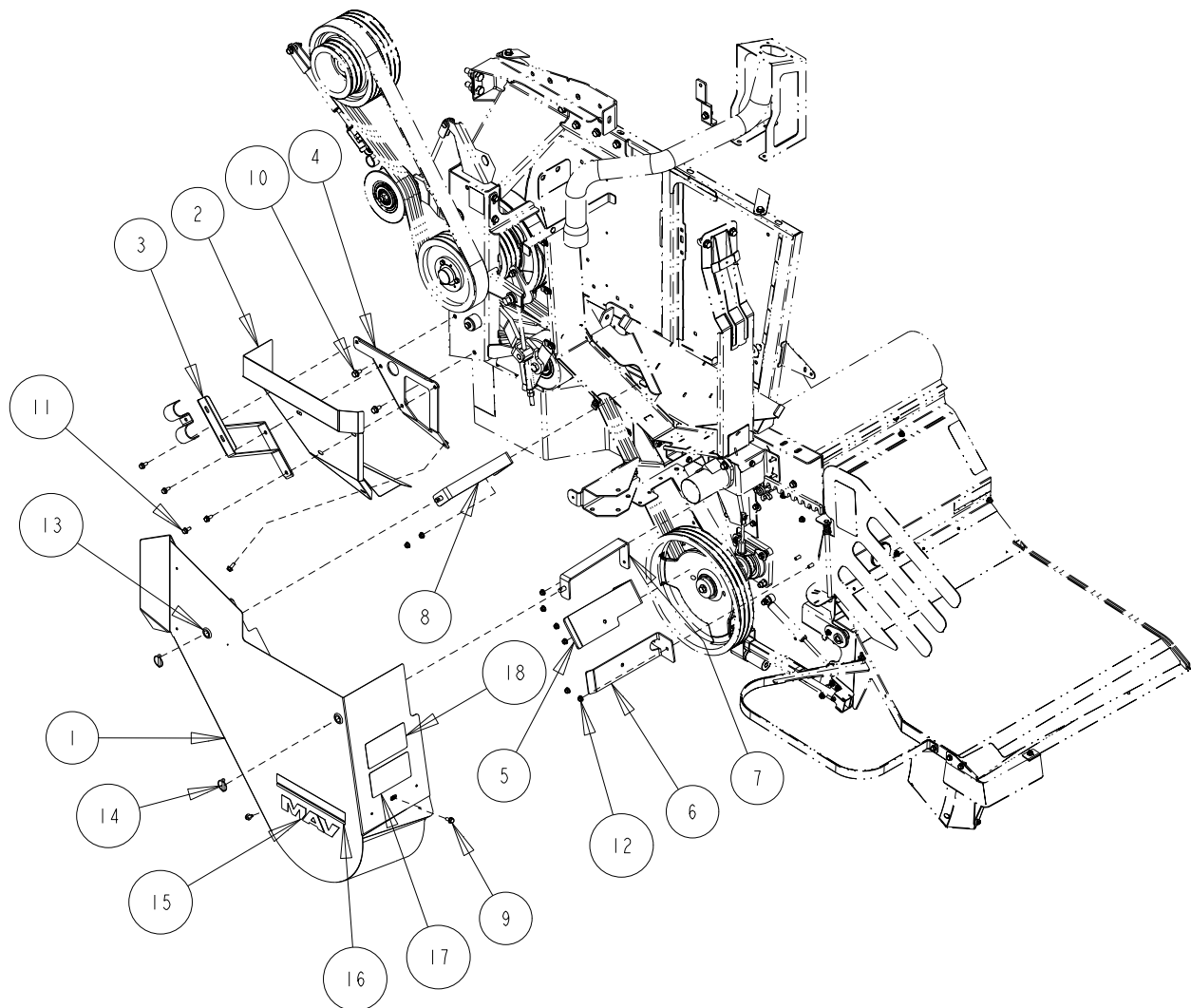
Indicate implement serial number with any parts order _____

CaseIH 240 Series MAV Chopper
Chopper Drive Shield Components

Date:24JAN2017

Serial No Range From:
RM25015

Serial No Range To:
RM25329



CSO145-02-38

Indicate implement serial number with any parts order _____

CaseIH 240 Series MAV Chopper
Chopper Drive Shield Components

Date:24JAN2017

Serial No Range From:
RM25015

Serial No Range To:
RM25329

ITEM NO.	PART NO.	DESCRIPTION	QTY	NOTE
1	CS923BA	LOWER DRIVE SHIELD AFX 230/240	1	
2	CS924B	UPPER DRIVE SHIELD AFX 230/240	1	
3	CS925B	BRACKET HYD DRV LINES AFX	1	
4	CS926B	MOUNT UPPER DRV SHIELD AFX 230/240	1	
5	CS929B	AFX 240s MY17 SHIELD BRACKET	1	
6	CS930B	AFX 240s MY17 SHIELD BRACKET	1	
7	CS931B	AFX 240s MY17 SHIELD BRACKET	1	
8	CS932B	AFX 240s MY17 SHIELD BRACKET	1	
9	B2IM-0820	BOLT FLG M8X20 C8.8 YZD Iso8102	61	
10	B2IM-1020	BOLT FLG M10X20 C8.8 YZD Iso8102	6	
11	B22M-0820	BOLT FLG M8X20 C10.9 YZD Iso8102	1	
12	N2IM-08	NUT FLG M8 C8 YZD Iso4161	191	
13	RPI26	GROMMET .75ID 1.063H .188TK	2	
14	RPI28	PIN LYNCH .25 x 1.5L w/CHAIN	2	
15	RPI75	DECAL MAV 2H x 10L	1	
16	RP240	DECAL REDEKOP	3	
17	RP874	DECAL SAFETY BELT KEEP HANDS OUT	1	
18	RP876	DECAL SAFETY HYDRAULIC HAZARD	1	

CSOI45-02-39

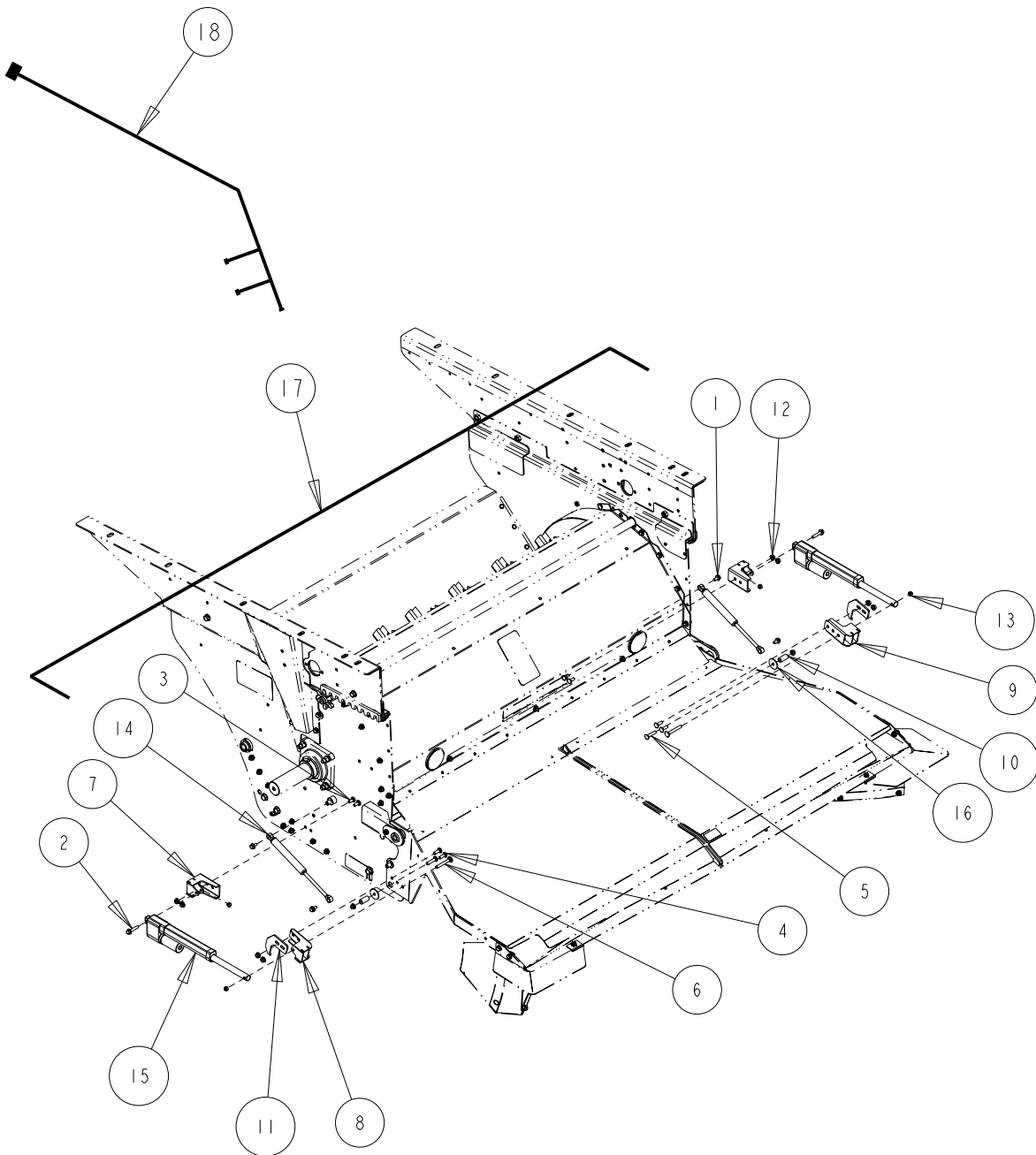
Indicate implement serial number with any parts order _____

CaseIH 240 Series MAV Chopper
Chopper Actuated Tailboard Components

Date:24JAN2017

Serial No Range From:
RM25015

Serial No Range To:
RM25329



CS0145-02-40

Indicate implement serial number with any parts order _____

CaseIH 240 Series MAV Chopper
Chopper Actuated Tailboard Components

Date:24JAN2017

Serial No Range From:
RM25015

Serial No Range To:
RM25329

ITEM NO.	PART NO.	DESCRIPTION	QTY	NOTE
1	B2IM-0816	BOLT FLG M8X16 C8.8 YZD Iso8102	12	
2	B2IM-0840	BOLT FLG M8X40 C8.8 YZD Iso8102	2	
3	B3IM-0820	BOLT RH M8x20 C8.8 YZD ISO8678 Short Neck	15	
4	B3IM-0825	BOLT RH M8x25 C8.8 YZD ISO8678 Short Neck	4	
5	B3IM-0840	BOLT RH M8x40 C8.8 YZD ISO8678 Short Neck	2	
6	B36M-0865	BOLT RH M8x65 C8.8 YZD ISO8677 Long Neck	2	
7	CS70IZ	ACTUATOR MOUNT CHOPPER	2	
8	CS705ZL	ACTUATOR MOUNT TAILBOARD OFFSET LT	1	
9	CS705ZR	ACTUATOR MOUNT TAILBOARD OFFSET RT	1	
10	CS972Z	TUBE SPACER	2	
11	CS973Z	HOOK TAILBOARD STOP	2	
12	N2IM-08	NUT FLG M8 C8 YZD Iso4161	136	
13	N42M-08	NUT LOCK STL M8 C10 YZD DIN980V	14	
14	RP95IA	SPRING GAS SHOCK ASSY HD 220LB	4	
15	RP940	ACTUATOR 12V 312+174mm w/ POT	2	
16	W4IM-10	WASHER FLAT M10 x 38 x 2.5 YZD	2	
17	RP892	HARNESS ELECTRIC 5W X 5FT METRIPACK - AFX	1	ACTUATOR TO ACTUATOR HARNESS
18	47590048	HARNESS ELECTRIC SPREADER ADJUST	1	CASEIH PART ACTUATOR HARNESS

CS0145-02-41

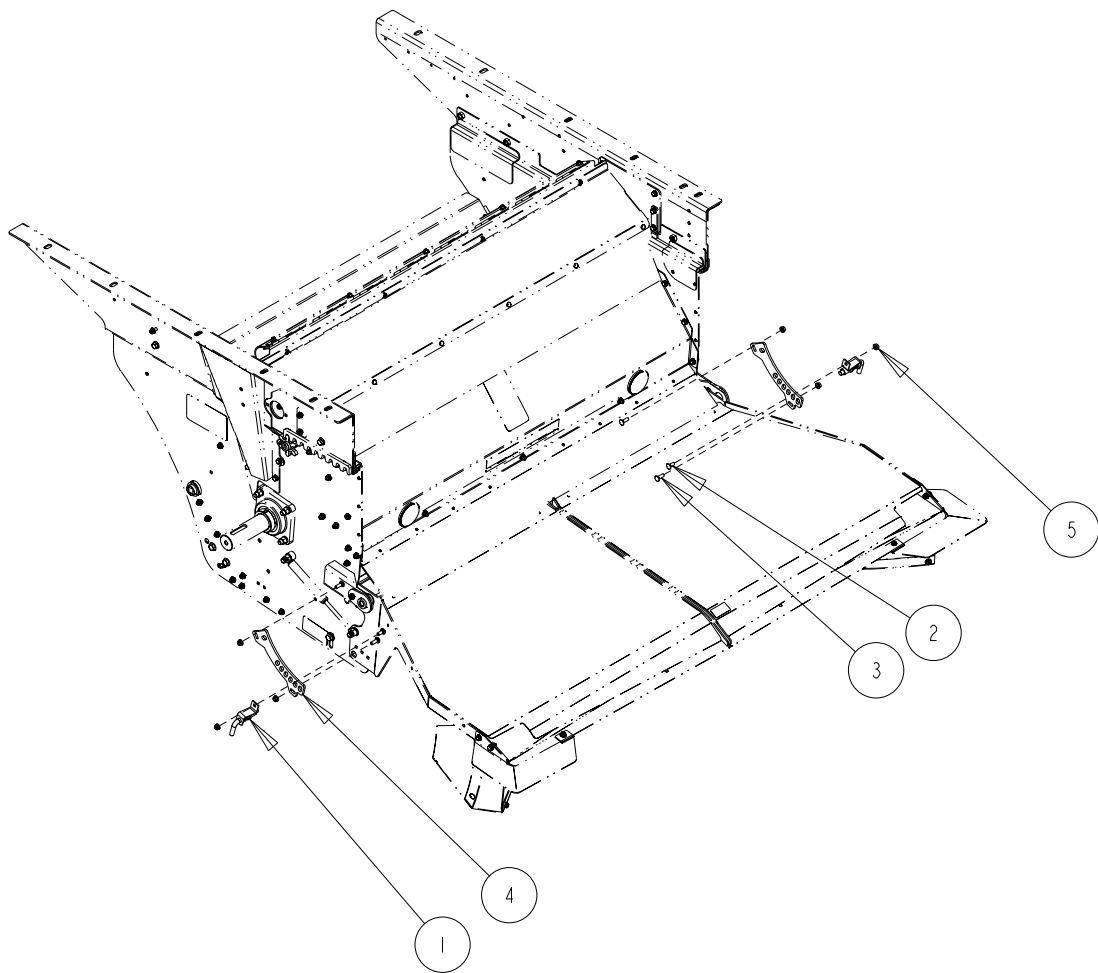
Indicate implement serial number with any parts order _____

CaseIH 240 Series MAV Chopper
Chopper Manual Tailboard Components

Date:24JAN2017

Serial No Range From:
RM25015

Serial No Range To:
RM25329



CS0145-02-42

Indicate implement serial number with any parts order _____

CaseIH 240 Series MAV Chopper
 Chopper Manual Tailboard Components

Date: 24JAN2017

Serial No Range From:
 RM25015

Serial No Range To:
RM25329

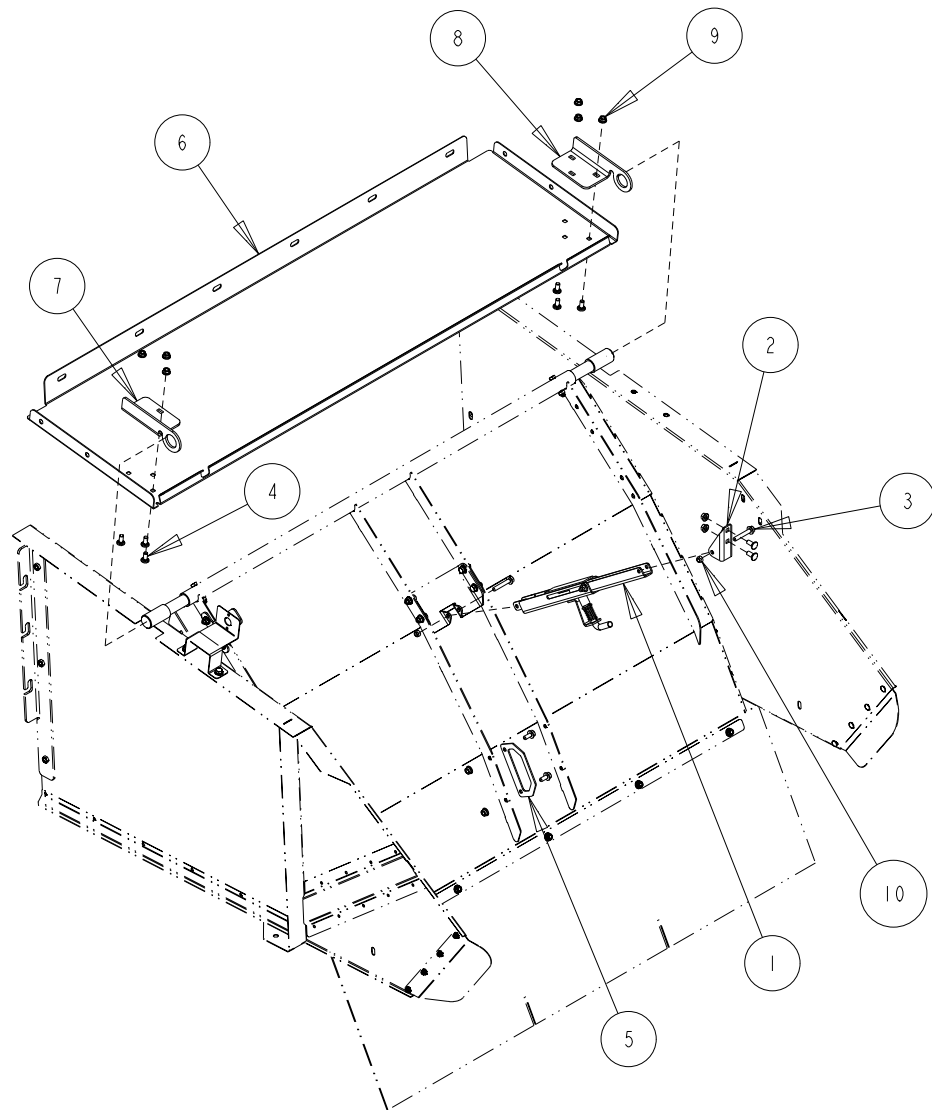
ITEM NO.	PART NO.	DESCRIPTION	QTY	NOTE
1	CG112BA	LATCH TBOARD ADJ	2	
2	B31M-0820	BOLT RH M8x20 C8.8 YZD ISO8678 Short Neck	2	
3	B31M-0825	BOLT RH M8x25 C8.8 YZD ISO8678 Short Neck	4	
4	CG314B	LUG TBOARD ADJ 6 HOLE	2	
5	N21M-08	NUT FLG M8 C8 YZD Iso4161	6	
6	CG314K	KIT CONVERSION MECH TAILBOARD ADJUSTMENT 1		

CaseIH 9120 Series MAV Chopper
Straw Hood Roof Update Components

Date: 24 JAN 2017

Serial No Range From:
RM25015

Serial No Range To:
RM25329



Indicate implement serial number with any parts order _____

CaseIH 9120 Series MAV Chopper
 Straw Hood Roof Update Components

Date:24JAN2017

Serial No Range From:
 RM25015

Serial No Range To:
RM25329

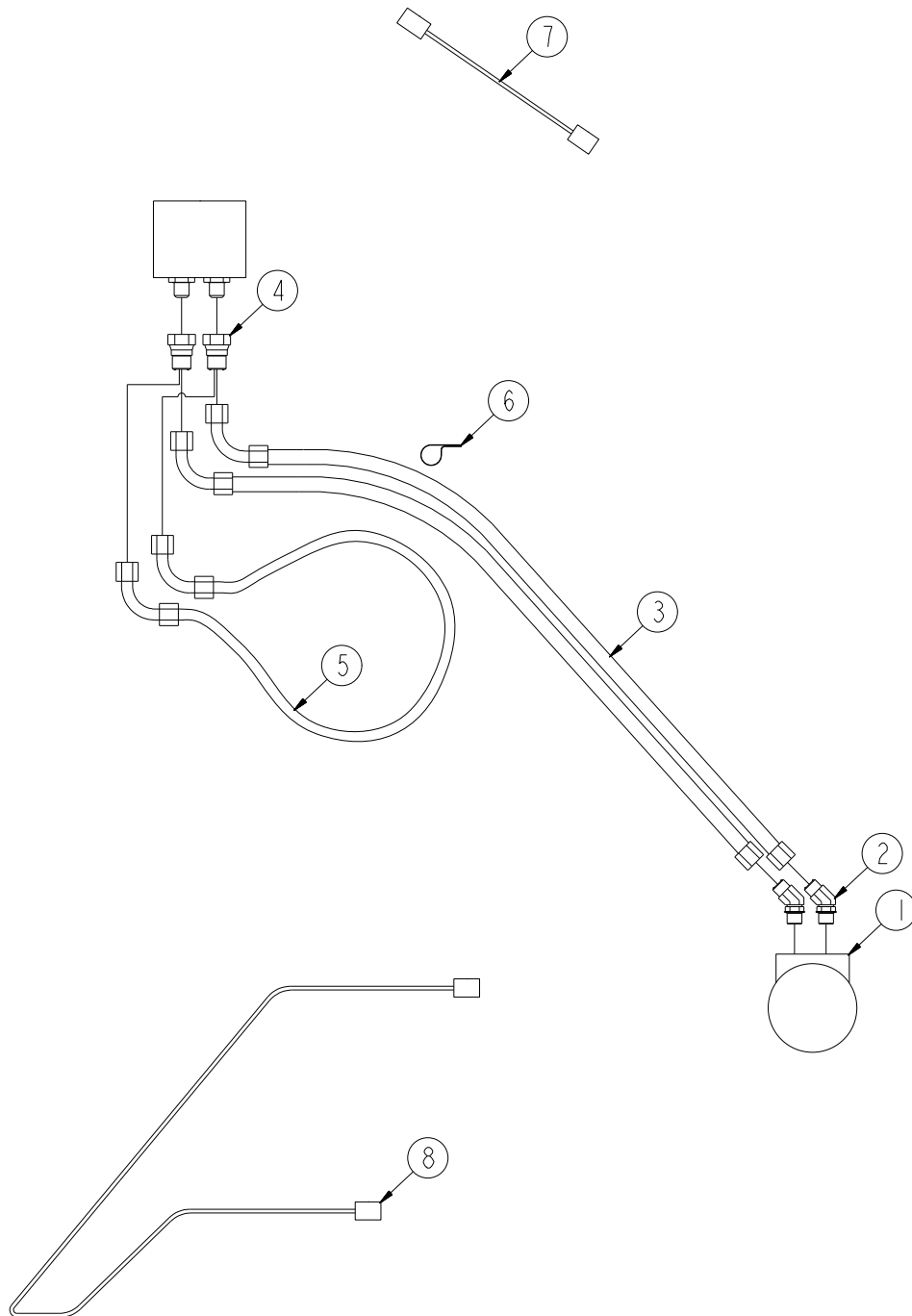
ITEM NO.	PART NO.	DESCRIPTION	QTY	NOTE
1	CS861BA	MECHANICAL LINKAGE AFX STRAW DOOR	1	
2	84127250	PIVOT MOUNT STRAW DOOR ACTUATOR	1	
3	B21M-0850	BOLT FLG M8X50 C8.8 YZD Iso8102	2	
4	B31M-0820	BOLT RH M8x20 C8.8 YZD ISO8678 Short Neck	10	
5	CS878B	HANDLE STRAW DOOR	1	
6	CS961B	HOOD 20S AFX UPGRADE	1	
7	CS978BL	PANEL SUPPORT BRACKET LT	1	
8	CS978BR	PANEL SUPPORT BRACKET RT	1	
9	N21M-08	NUT FLG M8 C8 YZD Iso4161	10	
10	N41M-08	NUT LOCK STL M8 C8 YZD DIN980V	2	
11	CS961K	KIT 120S ROOF/STRAW DOOR MECH ADJUSTMENT	1	
12	HH116	HOSE 0.75 X 30L 100R2SN-12FORFSX-12FORFSX	1	
13	RP891	HARNESS ELECTRIC 3W X 12FT SPEED SENSOR	1	

CaseIH 240 Series MAV Chopper
Chopper Hydraulics and Harness Components

Date:24JAN2017

Serial No Range From:
RM25015

Serial No Range To:
RM25329



CS0145-02-46

Indicate implement serial number with any parts order _____

CaseIH 240 Series MAV Chopper
 Chopper Hydraulics and Harness Components

Date:24JAN2017

Serial No Range From:
 RM25015

Serial No Range To:
RM25329

ITEM NO.	PART NO.	DESCRIPTION	QTY	NOTE
1	RP180	MOTOR HYDRAULIC EATON H5.9 2B 1.00" SHAFT 1		WINDROW HYDRAULIC MOTOR
2	H30-1010MF	FITTING HYDRAULIC 45DEG 10 MORG -10 MORFS 2		
3	HH115	HOSE HYDRAULIC .625 X 61L 100R2SN. 10	2	WINDROW ROLLER HYDRAULIC HOSE
4	H28-1012FF	FITTING HYDRAULIC STR 10 MORFS X 12 FORFS 2		
5	HH110	HOSE HYDRAULIC 0.75 X 26L 100R2SN	1	NON WINDROW HYDRAULIC HOSE
6	H99-18	TUBE STRAP 1.125 OD ZN RUBBER	5	
7	RP953	HARNESS ELECTRIC 2W X 32L DEUTSCH CON	1	STRAW DOOR HARNESS EXTENSION
8	RP892	HARNESS ELECTRIC 5W X 5FT METRIPACK AFX	1	ACTUATOR TO ACTUATOR HARNESS